

Converting Colors

HunterLab(61.9234, 7.3649,
16.3469)

Have a look what the booklet for
HunterLab(61.9234, 7.3649,
16.3469) contains.

HunterLab(61.9234, 7.3794, 16.3392)	3
<i>Conversions</i>	4
<i>Details</i>	6
<i>Harmonies</i>	12
<i>Previews</i>	24
<i>Color Blindness Simulation</i>	28
<i>CSS Examples</i>	31

Color

**HunterLab(61.9234, 7.3794,
16.3392)**

Conversions

Conversions Part 1

Format	Color
Hex	C79E87
RGB	199, 158, 135
RGB Percent	78%, 62%, 53%
CMY	0.2196, 0.3804, 0.4706
CMYK	0.00, 0.21, 0.32, 0.22
HSL	22°, 36%, 65%
HSV	22°, 32%, 78%
XYZ	40.1532, 38.3451, 28.2067
YIQ	167.6370, 31.8190, 1.5390

Conversions

Conversions Part 2

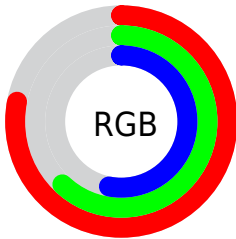
Format	Color
R_{YB}	199, 171, 135
Decimal	13082247
CIE _{Lab}	68.28, 11.92, 17.81
CIE _{LCh}	68, 21.427, 56.203
Yxy	38.3469, 0.3763, 0.3594
Android (android.graphics.Color)	4291272327 (0xFFC79E87)
YUV	167.6370, -16.0900, 27.5054
Hunter-Lab	61.9234, 7.3794, 16.3392

Details

The HunterLab color $61.9234, 7.3794, 16.3392$ is a light color, and the websafe version is hex $CC9999$. A complement of this color would be $63.5010, -10.4225, -11.5032$, and the grayscale version is $62.4822, -3.3339, 3.3948$.

A 20% lighter version of the original color is $85.1348, 6.4015, 19.4380$, and $41.3528, 7.0520, 13.2827$ is the 20% darker color. If you saturate the color by 10%, you get $58.0620, 11.5823, 19.3864$, and if you desaturate by 10%, it is $65.9831, 3.4992, 12.8940$.

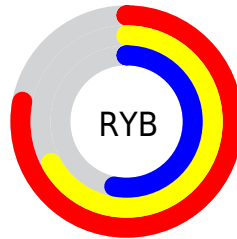
Distribution



Red (78%)

Green (62%)

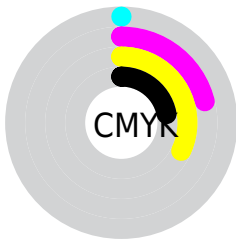
Blue (53%)



Red (78%)

Yellow (67%)

Blue (53%)

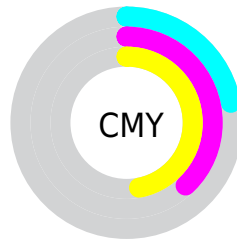


Cyan (0%)

Magenta (21%)

Yellow (32%)

Black (22%)



Cyan (22%)

Magenta (38%)

Yellow (47%)

Brightness & Saturation Gradients

These gradients show how the HunterLab color 61.9234, 7.3794, 16.3392 changes by changing the brightness by 10 percent. The first figure shows a shift by +10% for each color and the second figure -10%.

Similar to the brightness gradients but the following saturation gradients show a change of the HunterLab color 61.9234, 7.3794, 16.3392 by changing the saturation by 10% instead.

61.9234, 7.3794,
16.3392

61.9234, 7.3794,
16.3392

184.1482, 5.2730,
29.9304

51.2367, 7.3379,
14.7568

85.2288, 7.2589,
19.4215

41.2459, 7.2225,
13.1283

97.7783, 7.1136,
20.9362

32.0051, 7.0197,
11.4346

110.8897, 6.9169,
22.4410

23.5808, 6.7141,
9.6445

124.5398, 6.6725,
23.9399

16.0616, 6.2836,
7.7066

138.7081, 6.3834,
25.4361

9.5734, 5.6952,
6.7014

153.3764, 6.0523,

0.0000, INF, NaN

26.9320

0.0000, NaN, NaN

168.5280, 5.6815,
28.4296

0.0000, NaN, NaN

■ 61.9234, 7.3794,
16.3392

■ 61.9234, 7.3794,
16.3392

■ 58.0620, 11.5823,
19.3864

■ 65.9831, 3.4992,
12.8940

■ 54.4182, 16.1248,
21.9665

■ 70.2160, -0.0708,
9.1053

■ 51.0200, 20.9974,
24.0073

■ 74.6056, -3.3572,
5.0225

■ 47.8964, 26.1660,
25.4347

■ 79.1364, -6.3859,
0.6858

■ 45.0775, 31.5574,
26.1859

■ 83.7953, -9.1823,
-3.8717

■ 42.5924, 37.0465,
26.2329

■ 88.5706, -11.7704,
-8.6229

■ 40.8854, 41.2655,
25.9158

■ 92.7510, -18.0996,
-3.6410

■ 95.3321, -21.9762,
-0.4810

Harmonies

Analogous

The Analogous color harmony consists of three colors that are next to each other on the color wheel.



61.9248, 14.2717, 10.6823



61.9234, 7.3794, 16.3392



61.9248, -2.0715, 18.5481

Triad

The Triadic color harmony groups three colors that are evenly spaced from another and form a triangle on the color wheel.



61.9248, 7.3770, 16.3401



61.9248, -20.7876, 4.5305



61.9248, 5.1172, -14.6894

Complementary

The Complementary color scheme is a pair of colors which are on the opposite of each other on the color wheel.



61.9234, 7.3794, 16.3392



63.5010, -10.4225, -11.5032

Split Complementary

Split-complementary colors differ from the complementary color scheme. The scheme consists of three colors, the original color and two neighbors of the complement color.



61.9248, -4.5338, -16.9997



61.9234, 7.3794, 16.3392



61.9248, -19.1210, -4.9578

Square

The Square scheme is like the rectangle color scheme, but the four colors are evenly spaced on the color wheel.



61.9248, 7.3770, 16.3401



61.9248, -18.0122, 12.4234



61.9248, -13.3134, -13.2007



61.9248, 12.9118, -7.2959

Rectangle

The Rectangle color scheme consists of four colors that form a rectangle on the color wheel.



61.9234, 7.3794, 16.3392



61.9248, -8.4103, 18.0623



61.9248, -13.3134, -13.2007



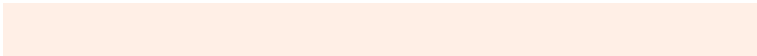
61.9248, 1.9661, -16.1306

Sweetspot

The Sweet Spot groups the original color and five complimentary colors.



61.9248, 7.3770, 16.3401



94.0652, -0.9983, 10.9901



57.1217, 25.3878, -7.3150



43.1405, -0.1662, 5.4320

0.0000, NaN, NaN



46.2646, -2.4686, 2.5136

Same Dimension

The Same Dimension uses a secret algorithm to generate beautiful new colors.



61.9248, 7.3770, 16.3401



78.1256, 13.8433, 24.6648



71.0345, -8.1904, 24.4955



33.5418, -0.4749, 3.7564



33.0164, 32.4642, 20.9129



8.0825, 4.8246, 5.0648

Inverse Universe

The Inverse Universe completely reimagines the original color for something new.



63.5010, -10.4225, -11.5032



80.6465, -14.8123, -20.1193



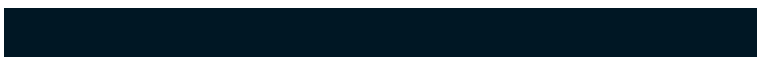
54.2251, 5.0633, -25.5779



33.7660, -2.9825, -0.1718



35.5824, -3.9092, -36.0362



8.5622, -2.1073, -6.1529

Previews

White Background



This preview shows how the HunterLab color 61.9234, 7.3794, 16.3392 looks on a white background.

Color Contrast Check

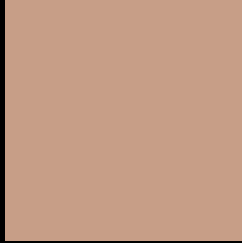
Large Text (above 18pt) WCAG AA × Fail

Any Text WCAG AA × Fail

Large Text (above 18pt) WCAG AAA × Fail

Any Text WCAG AAA × Fail

Black Background



This preview shows how the HunterLab color 61.9234, 7.3794, 16.3392 looks on a black background.

Color Contrast Check

Large Text (above 18pt) WCAG AA ✓ Pass

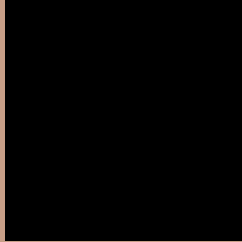
Any Text WCAG AA ✓ Pass

Large Text (above 18pt) WCAG AAA ✓ Pass

Any Text WCAG AAA ✓ Pass

If you want to check with other color combinations, try the [Color Contrast Checker](#).

HunterLab 61.9234, 7.3794, 16.3392 Background



This preview shows how black text looks on a background with the HunterLab color 61.9234, 7.3794, 16.3392.



This preview shows how white text looks on a background with the HunterLab color 61.9234, 7.3794,

Color Blindness Simulation

Color vision deficiency is a very complex topic, and I could not describe the different causes any better than Wikipedia does, so if you want to learn more, you should check out their [article about color blindness](#).

Dichromacy



Original Color

61.9234, 7.3794, 16.3392

Protanopia

61.9408, -4.0732, 14.7156

Deuteranopia

61.9356, 4.5653, 16.3018



Tritanopia

61.9846, 14.7676, 3.9451

Trichromacy



Original Color

61.9234, 7.3794, 16.3392

Protanomaly

61.8221, -0.0534, 15.0336

Deuteranomaly

61.8719, 5.7861, 16.2613

Tritanomaly

61.8278, 12.2640, 8.5752

Monochromacy



Original Color

61.9234, 7.3794, 16.3392

Achromatopsia

62.5758, -3.3389, 3.3999

Achromatomaly

62.0765, 0.2510, 8.2150

CSS Examples

Text

The CSS property to change the color of the text to HunterLab 61.9234, 7.3794, 16.3392 is called "color". The color property can be set on classes, ids or directly on the HTML element.

This example shows how text in the color `rgb(199, 158, 135)` looks like.

```
.text, #text, p{  
    color:rgb(199, 158, 135)  
}
```

If you want to add a text shadow in that color use the text-shadow property, you can generate a text shadow directly with our [CSS Text Shadow Generator](#).

Here you see how black text with a 4 pixel rgb(199, 158, 135) colored shadow looks like.

```
.shadow{ text-shadow: 4px 4px 2px rgb(199, 158, 135) }
```

Border

The CSS property to change the border of an element to HunterLab 61.9234, 7.3794, 16.3392 is called "border". The border property can be set on classes, ids or directly on the HTML element.

This example shows the color as border, it can be applied via the CSS property "border" or "border-color".

```
.border, #border, table{ border:4px solid rgb(199, 158, 135) }
```


If only the border color should be changed use the property `border-color`.

```
.border{ border-color:rgb(199, 158, 135) }
```

If you want to add a box shadow in that color use:

Here you see how a box with a 4 pixel `rgb(199, 158, 135)` colored shadow looks like.

```
.boxshadow{ -moz-box-shadow:4px 4px 4px  
4px rgb(199, 158, 135); -webkit-box-  
shadow:4px 4px 4px 4px rgb(199, 158, 135);  
box-shadow:4px 4px 4px 4px rgb(199, 158,  
135) }
```

Background

The CSS property to change the background color of an element to HunterLab 61.9234, 7.3794, 16.3392 is called "background". The background property can be set on classes, ids or directly on the HTML element.

```
.background, #background, body{  
background: rgb(199, 158, 135) }
```

If only the background color should be changed can be used:

```
.background{ background-color: rgb(199,  
158, 135) }
```

This example shows the color as background, it is applied via the CSS property "background".

To optimize and compress your CSS code, you can use our [online CSS compressor and optimizer](#) based on csstidy. If you want to create a linear or radial gradient as background or border, check our [CSS Gradient Generator](#).

Hey! You found this booklet interesting? Support Converting Colors with the new Membership Option!

The pro membership hides all ads, plus gives you double the colors in the color bucket, and more awesome pro features!

[Learn more, Memberships starting at \\$2.50/m!](#)

**Follow me
on Twitter!**

@ConvertingColor