

Converting Colors

HunterLab(61.9353, 13.3670,
13.5215)

Have a look what the booklet for
HunterLab(61.9353, 13.3670,
13.5215) contains.

HunterLab(61.9353, 13.3670, 13.5215)	3
<i>Conversions</i>	4
<i>Details</i>	6
<i>Harmonies</i>	12
<i>Previews</i>	24
<i>Color Blindness Simulation</i>	28
<i>CSS Examples</i>	31

Color

**HunterLab(61.9353, 13.3670,
13.5215)**

Conversions

Conversions Part 1

Format	Color
Hex	CF9A8F
RGB	207, 154, 143
RGB Percent	81%, 60%, 56%
CMY	0.1882, 0.3961, 0.4392
CMYK	0.00, 0.26, 0.31, 0.19
HSL	10°, 40%, 69%
HSV	10°, 31%, 81%
XYZ	42.2457, 38.3598, 31.1643
YIQ	168.5930, 35.1190, 7.8150

Conversions

Conversions Part 2

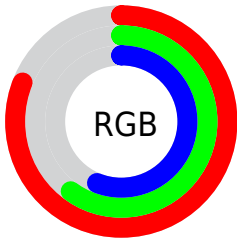
Format	Color
RYB	207, 156, 143
Decimal	13605519
CIELab	68.29, 18.28, 13.52
CIElCh	68, 22.734, 36.480
Yxy	38.3616, 0.3780, 0.3432
Android (android.graphics.Color)	4291795599 (0xFFCF9A8F)
YUV	168.5930, -12.6173, 33.6829
Hunter-Lab	61.9353, 13.3670, 13.5215

Details

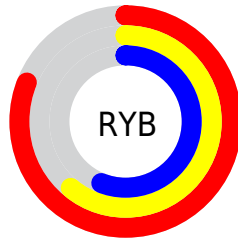
The HunterLab color **61.9353, 13.3670, 13.5215** is a light color, and the websafe version is hex **CC9999**. A complement of this color would be **70.5853, -16.4792, -6.3793**, and the grayscale version is **62.8619, -3.3542, 3.4154**.

A 20% lighter version of the original color is **84.1975, 9.7869, 14.8564**, and **41.3160, 12.3265, 10.8134** is the 20% darker color. If you saturate the color by 10%, you get **57.0358, 19.7076, 16.2483**, and if you desaturate by 10%, it is **67.1685, 7.3485, 10.6399**.

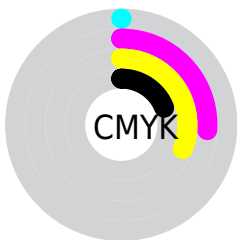
Distribution



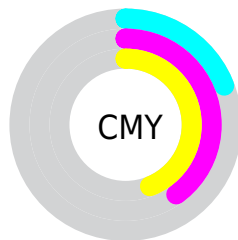
- Red (81%)
- Green (60%)
- Blue (56%)



- Red (81%)
- Yellow (61%)
- Blue (56%)



- Cyan (0%)
- Magenta (26%)
- Yellow (31%)
- Black (19%)



- Cyan (19%)
- Magenta (40%)
- Yellow (44%)

Brightness & Saturation Gradients

These gradients show how the HunterLab color 61.9353, 13.3670, 13.5215 changes by changing the brightness by 10 percent. The first figure shows a shift by +10% for each color and the second figure -10%.

Similar to the brightness gradients but the following saturation gradients show a change of the HunterLab color 61.9353, 13.3670, 13.5215 by changing the saturation by 10% instead.

■ 61.9353, 13.3670,
13.5215

■ 61.9353, 13.3670,
13.5215

184.1653, 13.5311,
25.3568

■ 51.2479, 13.0196,
12.1970

■ 85.2420, 13.8172,
16.1403

■ 41.2563, 12.5825,
10.8493

■ 97.7922, 13.9401,
17.4436

■ 32.0146, 12.0396,
9.4655

110.9042, 14.0017,
18.7479

■ 23.5894, 11.3734,
8.0240

124.5548, 14.0067,
20.0559

■ 16.0692, 10.5608,
6.4874

138.7237, 13.9590,
21.3694

■ 9.5798, 9.5756,
6.3724

153.3925, 13.8620,

0.0000, INF, NaN

22.6900

0.0000, NaN, NaN

168.5447, 13.7185,
24.0188

0.0000, NaN, NaN

■ 61.9353, 13.3670,
13.5215

■ 61.9353, 13.3670,
13.5215

■ 57.0358, 19.7076,
16.2483

■ 67.1685, 7.3485,
10.6399

■ 52.5199, 26.3449,
18.7497

■ 72.6858, 1.6562,
7.6474

■ 48.4518, 33.1829,
20.9345

■ 78.4511, -3.7344,
4.5766

■ 44.9006, 40.0376,
22.6866

■ 84.4338, -8.8534,
1.4482

■ 41.9357, 46.6129,
23.8809

■ 90.6087, -13.7332,
-1.7243

■ 39.6150, 52.5076,
24.4210

■ 95.9195, -19.8361,
0.2787

■ 38.0823, 56.8678,
24.4617

Harmonies

Analogous

The Analogous color harmony consists of three colors that are next to each other on the color wheel.



61.9368, 17.5360, 5.4519



61.9353, 13.3670, 13.5215



61.9368, 4.7623, 18.2274

Triad

The Triadic color harmony groups three colors that are evenly spaced from another and form a triangle on the color wheel.



61.9368, 13.3645, 13.5225



61.9368, -20.3776, 10.4022



61.9368, -1.0661, -18.3221

Complementary

The Complementary color scheme is a pair of colors which are on the opposite of each other on the color wheel.



61.9353, 13.3670, 13.5215



70.5853, -16.4792, -6.3793

Split Complementary

Split-complementary colors differ from the complementary color scheme. The scheme consists of three colors, the original color and two neighbors of the complement color.



61.9368, -10.9853, -16.4207



61.9353, 13.3670, 13.5215



61.9368, -21.7149, 1.2161

Square

The Square scheme is like the rectangle color scheme, but the four colors are evenly spaced on the color wheel.



61.9368, 13.3645, 13.5225



61.9368, -14.6053, 16.6414



61.9368, -18.3846, -8.8550



61.9368, 8.8617, -13.6944

Rectangle

The Rectangle color scheme consists of four colors that form a rectangle on the color wheel.



61.9353, 13.3670, 13.5215



61.9368, -2.0923, 19.3288



61.9368, -18.3846, -8.8550



61.9368, -4.5146, -18.4349

Sweetspot

The Sweet Spot groups the original color and five complimentary colors.



61.9368, 13.3645, 13.5225



93.3154, 0.8353, 8.9847



60.7548, 27.5264, -13.2412



42.6827, 0.8612, 4.4193

0.0000, NaN, NaN



46.2646, -2.4686, 2.5136

Same Dimension

The Same Dimension uses a secret algorithm to generate beautiful new colors.



61.9368, 13.3645, 13.5225



74.3067, 22.1170, 19.3995



70.8706, -2.6760, 21.8826



34.8312, 0.3920, 3.4057



30.3866, 44.6318, 19.5055



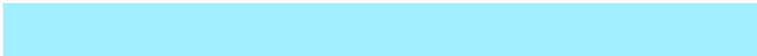
7.8715, 8.5080, 4.9993

Inverse Universe

The Inverse Universe completely reimagines the original color for something new.



70.5853, -16.4792, -6.3793



87.3862, -23.2603, -10.7499



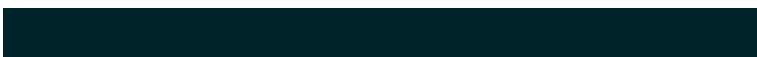
60.8404, -1.0677, -20.0565



36.1202, -4.0160, 0.4478



46.2695, -17.7764, -19.4588



11.3600, -4.7538, -3.9369

Previews

White Background



This preview shows how the HunterLab color 61.9353, 13.3670, 13.5215 looks on a white background.

Color Contrast Check

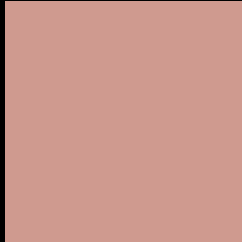
Large Text (above 18pt) WCAG AA × Fail

Any Text WCAG AA × Fail

Large Text (above 18pt) WCAG AAA × Fail

Any Text WCAG AAA × Fail

Black Background



This preview shows how the HunterLab color 61.9353, 13.3670, 13.5215 looks on a black background.

Color Contrast Check

Large Text (above 18pt) WCAG AA ✓ Pass

Any Text WCAG AA ✓ Pass

Large Text (above 18pt) WCAG AAA ✓ Pass

Any Text WCAG AAA ✓ Pass

If you want to check with other color combinations, try the [Color Contrast Checker](#).

HunterLab 61.9353, 13.3670, 13.5215 Background



This preview shows how black text looks on a background with the HunterLab color 61.9353, 13.3670, 13.5215.



This preview shows how white text looks on a background with the HunterLab color 61.9353, 13.3670,

Color Blindness Simulation

Color vision deficiency is a very complex topic, and I could not describe the different causes any better than Wikipedia does, so if you want to learn more, you should check out their [article about color blindness](#).

Dichromacy



Original Color

61.9353, 13.3670, 13.5215

Protanopia

62.0008, -3.3704, 10.9550

Deuteranopia

61.8879, 4.7343, 13.7009



Tritanopia

61.9135, 18.4248, 5.2913

Trichromacy



Original Color

61.9353, 13.3670, 13.5215

Protanomaly

61.9567, 2.3129, 11.8023

Deuteranomaly

61.8684, 7.5268, 13.7302

Tritanomaly

61.8601, 16.5199, 8.2613

Monochromacy



Original Color

61.9353, 13.3670, 13.5215

Achromatopsia

62.9885, -3.3609, 3.4223

Achromatomaly

62.5750, 2.1696, 7.0846

CSS Examples

Text

The CSS property to change the color of the text to HunterLab 61.9353, 13.3670, 13.5215 is called "color". The color property can be set on classes, ids or directly on the HTML element.

This example shows how text in the color `rgb(207, 154, 143)` looks like.

```
.text, #text, p{  
    color:rgb(207, 154, 143)  
}
```

If you want to add a text shadow in that color use the text-shadow property, you can generate a text shadow directly with our [CSS Text Shadow Generator](#).

Here you see how black text with a 4 pixel rgb(207, 154, 143) colored shadow looks like.

```
.shadow{ text-shadow: 4px 4px 2px rgb(207, 154, 143) }
```

Border

The CSS property to change the border of an element to HunterLab 61.9353, 13.3670, 13.5215 is called "border". The border property can be set on classes, ids or directly on the HTML element.

This example shows the color as border, it can be applied via the CSS property "border" or "border-color".

```
.border, #border, table{ border:4px solid rgb(207, 154, 143) }
```


If only the border color should be changed use the property `border-color`.

```
.border{ border-color:rgb(207, 154, 143) }
```

If you want to add a box shadow in that color use:

Here you see how a box with a 4 pixel `rgb(207, 154, 143)` colored shadow looks like.

```
.boxshadow{ -moz-box-shadow:4px 4px 4px  
4px rgb(207, 154, 143); -webkit-box-  
shadow:4px 4px 4px 4px rgb(207, 154, 143);  
box-shadow:4px 4px 4px 4px rgb(207, 154,  
143) }
```

Background

The CSS property to change the background color of an element to HunterLab 61.9353, 13.3670, 13.5215 is called "background". The background property can be set on classes, ids or directly on the HTML element.

```
.background, #background, body{  
background: rgb(207, 154, 143) }
```

If only the background color should be changed can be used:

```
.background{ background-color: rgb(207,  
154, 143) }
```

This example shows the color as background, it is applied via the CSS property "background".

To optimize and compress your CSS code, you can use our [online CSS compressor and optimizer](#) based on csstidy. If you want to create a linear or radial gradient as background or border, check our [CSS Gradient Generator](#).

Hey! You found this booklet interesting? Support Converting Colors with the new Membership Option!

The pro membership hides all ads, plus gives you double the colors in the color bucket, and more awesome pro features!

[Learn more, Memberships starting at \\$2.50/m!](#)

**Follow me
on Twitter!**

@ConvertingColor