

Converting Colors

HunterLab(61.9503, 12.9238,
20.8852)

Have a look what the booklet for
HunterLab(61.9503, 12.9238,
20.8852) contains.

HunterLab(62.0592, 12.8329, 20.8745)	3
<i>Conversions</i>	4
<i>Details</i>	6
<i>Harmonies</i>	12
<i>Previews</i>	24
<i>Color Blindness Simulation</i>	28
<i>CSS Examples</i>	31

Color

**HunterLab(62.0592, 12.8329,
20.8745)**

Conversions

Conversions Part 1

Format	Color
Hex	D49A7A
RGB	212, 154, 122
RGB Percent	83%, 60%, 48%
CMY	0.1686, 0.3961, 0.5216
CMYK	0.00, 0.27, 0.42, 0.17
HSL	21°, 51%, 65%
HSV	21°, 42%, 83%
XYZ	42.2199, 38.5134, 23.6210
YIQ	167.6940, 44.8400, 2.3440

Conversions

Conversions Part 2

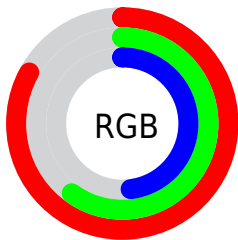
Format	Color
R_{YB}	212, 172, 122
Decimal	13933178
CIE Lab	68.40, 17.72, 25.34
CIE LCh	68, 30.919, 55.040
Yxy	38.5153, 0.4046, 0.3691
Android (android.graphics.Color)	4292123258 (0xFFD49A7A)
YUV	167.6940, -22.5271, 38.8564
Hunter-Lab	62.0592, 12.8329, 20.8745

Details

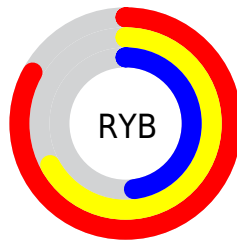
The HunterLab color $62.0592, 12.8329, 20.8745$ is a light color, and the websafe version is hex $CC9966$. A complement of this color would be $64.4453, -12.4289, -17.8114$, and the grayscale version is $62.5277, -3.3363, 3.3972$.

A 20% lighter version of the original color is $83.6397, 6.8164, 22.9077$, and $41.4127, 11.8817, 16.7019$ is the 20% darker color. If you saturate the color by 10%, you get $58.1290, 17.7856, 23.6243$, and if you desaturate by 10%, it is $66.2335, 8.2393, 17.6230$.

Distribution



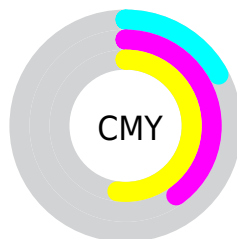
- Red (83%)
- Green (60%)
- Blue (48%)



- Red (83%)
- Yellow (67%)
- Blue (48%)



- Cyan (0%)
- Magenta (27%)
- Yellow (42%)
- Black (17%)



- Cyan (17%)
- Magenta (40%)
- Yellow (52%)

Brightness & Saturation Gradients

These gradients show how the HunterLab color 62.0592, 12.8329, 20.8745 changes by changing the brightness by 10 percent. The first figure shows a shift by +10% for each color and the second figure -10%.

Similar to the brightness gradients but the following saturation gradients show a change of the HunterLab color 62.0592, 12.8329, 20.8745 by changing the saturation by 10% instead.

62.0592, 12.8329,
20.8745

62.0592, 12.8329,
20.8745

184.3435, 12.7929,
37.6573

51.3643, 12.5127,
18.8209

85.3799, 13.2316,
24.8028

41.3646, 12.1043,
16.6795

97.9365, 13.3304,
26.7025

32.1141, 11.5919,
14.4207

111.0547, 13.3689,
28.5719

23.6793, 10.9577,
11.9990

124.7112, 13.3515,
30.4178

16.1483, 10.1788,
9.6656

138.8858, 13.2821,
32.2454

9.6463, 9.2277,
6.7524

153.5601, 13.1640,

0.0000, INF, NaN

34.0590

0.0000, NaN, NaN

168.7177, 13.0001,
35.8620

0.0000, NaN, NaN

■ 62.0592, 12.8329,
20.8745

■ 62.0592, 12.8329,
20.8745

■ 58.1290, 17.7856,
23.6243

■ 66.2335, 8.2393,
17.6230

■ 54.4678, 23.0957,
25.7897

■ 70.6209, 4.0035,
13.9398

■ 51.1096, 28.7199,
27.2902

■ 75.2001, 0.1018,
9.8887

■ 48.0876, 34.5729,
28.0581

■ 79.9511, -3.4920,
5.5222

■ 45.4338, 40.5111,
28.0655

■ 84.8567, -6.8060,
0.8842

■ 43.6831, 44.8913,
27.7032

■ 89.9023, -9.8682,
-3.9896

■ 94.5308, -15.7393,
-1.3644

■ 96.3001, -18.4566,
0.7685

Harmonies

Analogous

The Analogous color harmony consists of three colors that are next to each other on the color wheel.



62.0607, 22.9302, 13.2445



62.0592, 12.8329, 20.8745



62.0607, -0.9764, 23.8155

Triad

The Triadic color harmony groups three colors that are evenly spaced from another and form a triangle on the color wheel.



62.0607, 12.8301, 20.8754



62.0607, -27.8605, 5.5459



62.0607, 8.4620, -24.5008

Complementary

The Complementary color scheme is a pair of colors which are on the opposite of each other on the color wheel.



62.0592, 12.8329, 20.8745



64.4453, -12.4289, -17.8114

Split Complementary

Split-complementary colors differ from the complementary color scheme. The scheme consists of three colors, the original color and two neighbors of the complement color.



62.0607, -5.6189, -27.8313



62.0592, 12.8329, 20.8745



62.0607, -25.8136, -8.4325

Square

The Square scheme is like the rectangle color scheme, but the four colors are evenly spaced on the color wheel.



62.0607, 12.8301, 20.8754



62.0607, -23.8203, 16.3026



62.0607, -17.9612, -21.4088



62.0607, 20.2561, -13.1098

Rectangle

The Rectangle color scheme consists of four colors that form a rectangle on the color wheel.



62.0592, 12.8329, 20.8745



62.0607, -10.1289, 23.3273



62.0607, -17.9612, -21.4088



62.0607, 3.8067, -26.6933

Sweetspot

The Sweet Spot groups the original color and five complimentary colors.



62.0607, 12.8301, 20.8754



92.2853, 0.4425, 12.5423



55.8858, 37.6275, -10.9991



42.1057, 0.6879, 6.3316

0.0000, NaN, NaN



46.2646, -2.4686, 2.5136

Same Dimension

The Same Dimension uses a secret algorithm to generate beautiful new colors.



62.0607, 12.8301, 20.8754



72.0692, 21.3434, 28.8344



74.8462, -9.4158, 31.3692



36.2439, -0.4809, 4.0675



34.5725, 34.5898, 21.9089



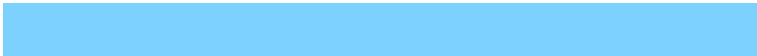
9.3525, 6.3023, 5.8733

Inverse Universe

The Inverse Universe completely reimagines the original color for something new.



64.4453, -12.4289, -17.8114



75.5355, -15.8265, -27.9928



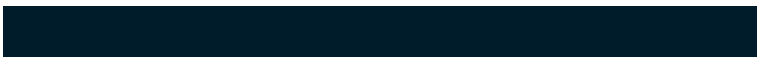
51.3413, 9.7402, -40.1240



36.5106, -3.2533, -0.1926



37.5590, -4.3138, -37.6333



10.0220, -2.2888, -7.5856

Previews

White Background



This preview shows how the HunterLab color 62.0592, 12.8329, 20.8745 looks on a white background.

Color Contrast Check

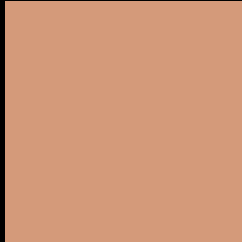
Large Text (above 18pt) WCAG AA × Fail

Any Text WCAG AA × Fail

Large Text (above 18pt) WCAG AAA × Fail

Any Text WCAG AAA × Fail

Black Background



This preview shows how the HunterLab color 62.0592, 12.8329, 20.8745 looks on a black background.

Color Contrast Check

Large Text (above 18pt) WCAG AA ✓ Pass

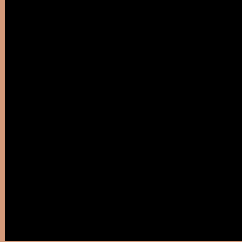
Any Text WCAG AA ✓ Pass

Large Text (above 18pt) WCAG AAA ✓ Pass

Any Text WCAG AAA ✓ Pass

If you want to check with other color combinations, try the [Color Contrast Checker](#).

HunterLab 62.0592, 12.8329, 20.8745 Background



This preview shows how black text looks on a background with the HunterLab color 62.0592, 12.8329, 20.8745.



This preview shows how white text looks on a background with the HunterLab color 62.0592, 12.8329, 20.8745.

Color Blindness Simulation

Color vision deficiency is a very complex topic, and I could not describe the different causes any better than Wikipedia does, so if you want to learn more, you should check out their [article about color blindness](#).

Dichromacy



Original Color

62.0592, 12.8329, 20.8745

Protanopia

62.2733, -4.9126, 18.8428

Deuteranopia

62.0708, 4.4237, 21.0464



Tritanopia

62.1546, 21.6456, 6.9534

Trichromacy



Original Color

62.0592, 12.8329, 20.8745

Protanomaly

61.9866, 1.4459, 19.3412

Deuteranomaly

62.0731, 7.2795, 21.0985

Tritanomaly

62.1736, 18.3215, 12.6990

Monochromacy



Original Color

62.0592, 12.8329, 20.8745

Achromatopsia

62.5758, -3.3389, 3.3999

Achromatomaly

62.1443, 1.6901, 10.3892

CSS Examples

Text

The CSS property to change the color of the text to HunterLab 62.0592, 12.8329, 20.8745 is called "color". The color property can be set on classes, ids or directly on the HTML element.

This example shows how text in the color `rgb(212, 154, 122)` looks like.

```
.text, #text, p{  
    color:rgb(212, 154, 122)  
}
```

If you want to add a text shadow in that color use the text-shadow property, you can generate a text shadow directly with our [CSS Text Shadow Generator](#).

Here you see how black text with a 4 pixel rgb(212, 154, 122) colored shadow looks like.

```
.shadow{ text-shadow: 4px 4px 2px rgb(212, 154, 122) }
```

Border

The CSS property to change the border of an element to HunterLab 62.0592, 12.8329, 20.8745 is called "border". The border property can be set on classes, ids or directly on the HTML element.

This example shows the color as border, it can be applied via the CSS property "border" or "border-color".

```
.border, #border, table{ border:4px solid rgb(212, 154, 122) }
```


If only the border color should be changed use the property `border-color`.

```
.border{ border-color:rgb(212, 154, 122) }
```

If you want to add a box shadow in that color use:

Here you see how a box with a 4 pixel `rgb(212, 154, 122)` colored shadow looks like.

```
.boxshadow{ -moz-box-shadow:4px 4px 4px  
4px rgb(212, 154, 122); -webkit-box-  
shadow:4px 4px 4px 4px rgb(212, 154, 122);  
box-shadow:4px 4px 4px 4px rgb(212, 154,  
122) }
```

Background

The CSS property to change the background color of an element to HunterLab 62.0592, 12.8329, 20.8745 is called "background". The background property can be set on classes, ids or directly on the HTML element.

```
.background, #background, body{  
background: rgb(212, 154, 122) }
```

If only the background color should be changed can be used:

```
.background{ background-color: rgb(212,  
154, 122) }
```

This example shows the color as background, it is applied via the CSS property "background".

To optimize and compress your CSS code, you can use our [online CSS compressor and optimizer](#) based on csstidy. If you want to create a linear or radial gradient as background or border, check our [CSS Gradient Generator](#).

Hey! You found this booklet interesting? Support Converting Colors with the new Membership Option!

The pro membership hides all ads, plus gives you double the colors in the color bucket, and more awesome pro features!

[Learn more, Memberships starting at \\$2.50/m!](#)

**Follow me
on Twitter!**

@ConvertingColor