

Converting Colors

HunterLab(61.9736, 7.3364,
4.4968)

Have a look what the booklet for
HunterLab(61.9736, 7.3364, 4.4968)
contains.

HunterLab(61.8833, 7.3286, 4.6104)	3
<i>Conversions</i>	4
<i>Details</i>	6
<i>Harmonies</i>	12
<i>Previews</i>	24
<i>Color Blindness Simulation</i>	28
<i>CSS Examples</i>	31

Color

**HunterLab(61.8833, 7.3286,
4.6104)**

Conversions

Conversions Part 1

Format	Color
Hex	BD9FA4
RGB	189, 159, 164
RGB Percent	74%, 62%, 64%
CMY	0.2588, 0.3765, 0.3569
CMYK	0.00, 0.16, 0.13, 0.26
HSL	350°, 19%, 68%
HSV	350°, 16%, 74%
XYZ	40.0853, 38.2954, 40.4010
YIQ	168.5400, 16.2750, 7.9150

Conversions

Conversions Part 2

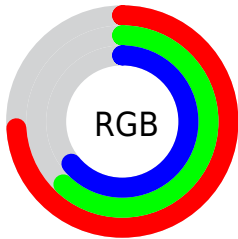
Format	Color
RYB	189, 159, 164
Decimal	12427172
CIELab	68.24, 11.86, 1.52
CIElCh	68, 11.962, 7.311
Yxy	38.2971, 0.3375, 0.3224
Android (android.graphics.Color)	4290617252 (0xFFBD9FA4)
YUV	168.5400, -2.2382, 17.9434
Hunter-Lab	61.8833, 7.3286, 4.6104

Details

The HunterLab color $61.8833, 7.3286, 4.6104$ is a light color, and the websafe version is hex $CC9999$. A complement of this color would be $68.7225, -13.3840, 2.9869$, and the grayscale version is $62.8040, -3.3511, 3.4123$.

A 20% lighter version of the original color is $85.2174, 6.8972, 6.0037$, and $41.2866, 6.7758, 3.5456$ is the 20% darker color. If you saturate the color by 10%, you get $56.3486, 14.6218, 5.3893$, and if you desaturate by 10%, it is $67.7547, 0.2479, 4.0844$.

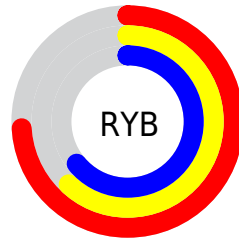
Distribution



Red (74%)

Green (62%)

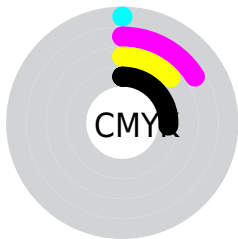
Blue (64%)



Red (74%)

Yellow (62%)

Blue (64%)

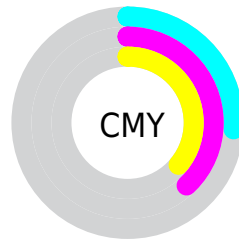


Cyan (0%)

Magenta (16%)

Yellow (13%)

Black (26%)



Cyan (26%)

Magenta (38%)

Yellow (36%)

Brightness & Saturation Gradients

These gradients show how the HunterLab color 61.8833, 7.3286, 4.6104 changes by changing the brightness by 10 percent. The first figure shows a shift by +10% for each color and the second figure -10%.

Similar to the brightness gradients but the following saturation gradients show a change of the HunterLab color 61.8833, 7.3286, 4.6104 by changing the saturation by 10% instead.

61.8833, 7.3286,
4.6104

61.8833, 7.3286,
4.6104

184.0904, 5.2045,
11.8178

51.1990, 7.2899,
3.9521

85.1841, 7.2040,
6.0222

41.2109, 7.1771,
3.3250

97.7316, 7.0566,
6.7712

31.9728, 6.9770,
2.7319

110.8409, 6.8578,
7.5479

23.5517, 6.6742,
2.1742

124.4891, 6.6114,
8.3514

16.0360, 6.2467,
1.6532

138.6556, 6.3204,
9.1809

9.5518, 5.6613,
1.1822

153.3220, 5.9874,

0.0000, INF, NaN

10.0356

0.0000, NaN, NaN

168.4720, 5.6148,
10.9148

0.0000, NaN, NaN

■ 61.8833, 7.3286,
4.6104

■ 61.8833, 7.3286,
4.6104

■ 56.3486, 14.6218,
5.3893

■ 67.7547, 0.2479,
4.0844

■ 51.2084, 22.0958,
6.4592

■ 73.9093, -6.6145,
3.7689

■ 46.5403, 29.6417,
7.8566

■ 80.3091, -13.2784,
3.6307

■ 42.4346, 37.0403,
9.5964

■ 86.9230, -19.7684,
3.6411

■ 38.9905, 43.9184,
11.6491

■ 93.7258, -26.1106,
3.7764

■ 36.3014, 49.7519,
13.9133

■ 94.6356, -24.5324,
-1.3880

■ 34.4284, 53.9756,
16.2047

■ 33.3589, 56.2422,
18.2832

■ 33.0460, 56.8995,
18.9729

Harmonies

Analogous

The Analogous color harmony consists of three colors that are next to each other on the color wheel.



61.8847, 6.5620, -0.5612



61.8833, 7.3286, 4.6104



61.8847, 5.1658, 9.0579

Triad

The Triadic color harmony groups three colors that are evenly spaced from another and form a triangle on the color wheel.



61.8847, 7.3267, 4.6115



61.8847, -9.4701, 10.7164



61.8847, -7.2572, -6.4478

Complementary

The Complementary color scheme is a pair of colors which are on the opposite of each other on the color wheel.



61.8833, 7.3286, 4.6104



68.7225, -13.3840, 2.9869

Split Complementary

Split-complementary colors differ from the complementary color scheme. The scheme consists of three colors, the original color and two neighbors of the complement color.



61.8847, -11.3440, -2.9181



61.8833, 7.3286, 4.6104



61.8847, -12.5907, 7.0564

Square

The Square scheme is like the rectangle color scheme, but the four colors are evenly spaced on the color wheel.



61.8847, 7.3267, 4.6115



61.8847, -4.6202, 12.3811



61.8847, -13.2647, 2.0993



61.8847, -1.9794, -7.2435

Rectangle

The Rectangle color scheme consists of four colors that form a rectangle on the color wheel.



61.8833, 7.3286, 4.6104



61.8847, 2.3991, 11.1134



61.8847, -13.2647, 2.0993



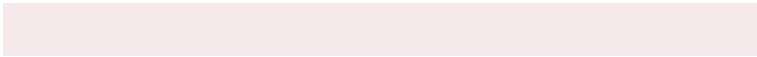
61.8847, -8.8104, -5.5279

Sweetspot

The Sweet Spot groups the original color and five complimentary colors.



61.8847, 7.3267, 4.6115



91.3129, -0.4050, 5.4230



62.1792, 9.8965, -7.4197



42.0815, 0.1157, 2.5325



97.7295, -5.2146, 5.3098



44.2712, -2.3622, 2.4053

Same Dimension

The Same Dimension uses a secret algorithm to generate beautiful new colors.



61.8847, 7.3267, 4.6115



80.2212, 13.1253, 6.4882



64.5751, 1.5249, 9.6994



30.9219, 1.2650, 1.9972



27.1207, 46.7256, 15.3500



5.4434, 9.5272, 1.9267

Inverse Universe

The Inverse Universe completely reimagines the original color for something new.



61.8847, 7.3267, 4.6115



80.2212, 13.1253, 6.4882



65.7925, -7.6860, -2.9798



30.9219, 1.2650, 1.9972



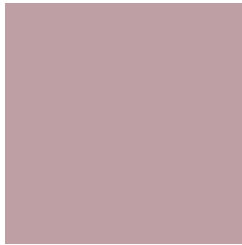
27.1207, 46.7256, 15.3500



5.4434, 9.5272, 1.9267

Previews

White Background



This preview shows how the HunterLab color 61.8833, 7.3286, 4.6104 looks on a white background.

Color Contrast Check

Large Text (above 18pt) WCAG AA × Fail

Any Text WCAG AA × Fail

Large Text (above 18pt) WCAG AAA × Fail

Any Text WCAG AAA × Fail

Black Background



This preview shows how the HunterLab color 61.8833, 7.3286, 4.6104 looks on a black background.

Color Contrast Check

Large Text (above 18pt) WCAG AA ✓ Pass

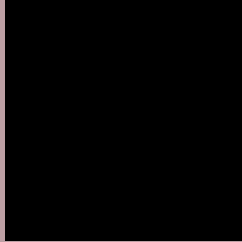
Any Text WCAG AA ✓ Pass

Large Text (above 18pt) WCAG AAA ✓ Pass

Any Text WCAG AAA ✓ Pass

If you want to check with other color combinations, try the [Color Contrast Checker](#).

HunterLab 61.8833, 7.3286, 4.6104 Background



This preview shows how black text looks on a background with the HunterLab color 61.8833, 7.3286, 4.6104.



This preview shows how white text looks on a background with the HunterLab color 61.8833, 7.3286,

4.6104.

Color Blindness Simulation

Color vision deficiency is a very complex topic, and I could not describe the different causes any better than Wikipedia does, so if you want to learn more, you should check out their [article about color blindness](#).

Dichromacy



Original Color

61.8833, 7.3286, 4.6104

Protanopia

62.0762, -2.0495, 2.8322

Deuteranopia

61.9358, 4.6245, 4.6239



Tritanopia

61.8895, 9.1303, 1.8631

Trichromacy



Original Color

61.8833, 7.3286, 4.6104

Protanomaly

61.8179, 1.4771, 3.0535

Deuteranomaly

61.8555, 5.8018, 4.5514

Tritanomaly

61.8288, 8.8097, 2.7282

Monochromacy



Original Color

61.8833, 7.3286, 4.6104

Achromatopsia

62.9885, -3.3609, 3.4223

Achromatomaly

62.3942, 0.4796, 3.7151

CSS Examples

Text

The CSS property to change the color of the text to HunterLab 61.8833, 7.3286, 4.6104 is called "color". The color property can be set on classes, ids or directly on the HTML element.

This example shows how text in the color `rgb(189, 159, 164)` looks like.

```
.text, #text, p{  
    color:rgb(189, 159, 164)  
}
```

If you want to add a text shadow in that color use the text-shadow property, you can generate a text shadow directly with our [CSS Text Shadow Generator](#).

Here you see how black text with a 4 pixel rgb(189, 159, 164) colored shadow looks like.

```
.shadow{ text-shadow: 4px 4px 2px rgb(189, 159, 164) }
```

Border

The CSS property to change the border of an element to HunterLab 61.8833, 7.3286, 4.6104 is called "border". The border property can be set on classes, ids or directly on the HTML element.

This example shows the color as border, it can be applied via the CSS property "border" or "border-color".

```
.border, #border, table{ border:4px solid rgb(189, 159, 164) }
```


If only the border color should be changed use the property border-color.

```
.border{ border-color:rgb(189, 159, 164) }
```

If you want to add a box shadow in that color use:

Here you see how a box with a 4 pixel rgb(189, 159, 164) colored shadow looks like.

```
.boxshadow{ -moz-box-shadow:4px 4px 4px  
4px rgb(189, 159, 164); -webkit-box-  
shadow:4px 4px 4px 4px rgb(189, 159, 164);  
box-shadow:4px 4px 4px 4px rgb(189, 159,  
164) }
```

Background

The CSS property to change the background color of an element to HunterLab 61.8833, 7.3286, 4.6104 is called "background". The background property can be set on classes, ids or directly on the HTML element.

```
.background, #background, body{  
background: rgb(189, 159, 164) }
```

If only the background color should be changed can be used:

```
.background{ background-color: rgb(189,  
159, 164) }
```

This example shows the color as background, it is applied via the CSS property "background".

To optimize and compress your CSS code, you can use our [online CSS compressor and optimizer](#) based on csstidy. If you want to create a linear or radial gradient as background or border, check our [CSS Gradient Generator](#).

Hey! You found this booklet interesting? Support Converting Colors with the new Membership Option!

The pro membership hides all ads, plus gives you double the colors in the color bucket, and more awesome pro features!

[Learn more, Memberships starting at \\$2.50/m!](#)

**Follow me
on Twitter!**

@ConvertingColor