

Converting Colors

HunterLab(62.0016, 4.2715,
20.3605)

Have a look what the booklet for
HunterLab(62.0016, 4.2715,
20.3605) contains.

HunterLab(62.0016, 4.2715, 20.3605)	3
<i>Conversions</i>	4
<i>Details</i>	6
<i>Harmonies</i>	12
<i>Previews</i>	24
<i>Color Blindness Simulation</i>	28
<i>CSS Examples</i>	31

Color

**HunterLab(62.0016, 4.2715,
20.3605)**

Conversions

Conversions Part 1

Format	Color
Hex	C5A07B
RGB	197, 160, 123
RGB Percent	77%, 63%, 48%
CMY	0.2275, 0.3725, 0.5176
CMYK	0.00, 0.19, 0.38, 0.23
HSL	30°, 39%, 63%
HSV	30°, 38%, 77%
XYZ	39.1719, 38.4420, 24.0944
YIQ	166.8450, 33.9290, -3.6630

Conversions

Conversions Part 2

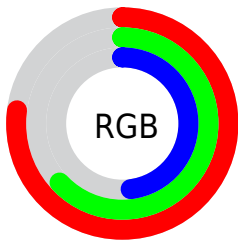
Format	Color
RYB	197, 197, 123
Decimal	12951675
CIELab	68.35, 8.53, 24.45
CIELCh	68, 25.898, 70.766
Yxy	38.4438, 0.3851, 0.3780
Android (android.graphics.Color)	4291141755 (0xFFC5A07B)
YUV	166.8450, -21.6156, 26.4459
Hunter-Lab	62.0016, 4.2715, 20.3605

Details

The HunterLab color $62.0016, 4.2715, 20.3605$ is a light color, and the websafe version is hex $CC9966$. A complement of this color would be $57.7777, -5.9047, -18.7069$, and the grayscale version is $62.1771, -3.3176, 3.3782$.

A 20% lighter version of the original color is $85.4374, 3.7872, 24.2086$, and $41.4517, 4.3684, 16.3523$ is the 20% darker color. If you saturate the color by 10%, you get $58.9222, 7.2194, 23.4419$, and if you desaturate by 10%, it is $65.2221, 1.6519, 16.7030$.

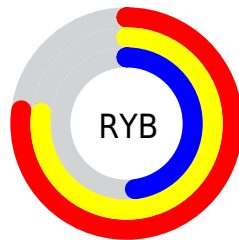
Distribution



Red (77%)

Green (63%)

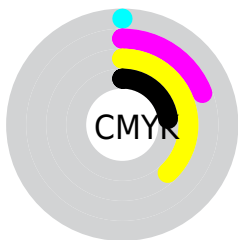
Blue (48%)



Red (77%)

Yellow (77%)

Blue (48%)

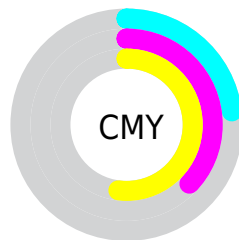


Cyan (0%)

Magenta (19%)

Yellow (38%)

Black (23%)



Cyan (23%)

Magenta (37%)

Yellow (52%)

Brightness & Saturation Gradients

These gradients show how the HunterLab color 62.0016, 4.2715, 20.3605 changes by changing the brightness by 10 percent. The first figure shows a shift by +10% for each color and the second figure -10%.

Similar to the brightness gradients but the following saturation gradients show a change of the HunterLab color 62.0016, 4.2715, 20.3605 by changing the saturation by 10% instead.

■ 62.0016, 4.2715,
20.3605

■ 62.0016, 4.2715,
20.3605

184.2607, 0.9270,
36.7614

■ 51.3101, 4.3990,
18.3631

■ 85.3158, 3.8374,
24.1875

■ 41.3142, 4.4627,
16.2829

■ 97.8694, 3.5454,
26.0412

■ 32.0678, 4.4508,
14.0913

■ 110.9847, 3.2078,
27.8669

■ 23.6375, 4.3505,
11.7441

124.6385, 2.8276,
29.6713

■ 16.1115, 4.1428,
9.4309

138.8104, 2.4074,
31.4593

■ 9.6154, 3.7974,
6.7308

153.4822, 1.9493,

0.0000, INF, NaN

33.2349

0.0000, NaN, NaN

168.6372, 1.4552,
35.0014

0.0000, NaN, NaN

■ 62.0016, 4.2715,
20.3605

■ 62.0016, 4.2715,
20.3605

■ 58.9222, 7.2194,
23.4419

■ 65.2221, 1.6519,
16.7030

■ 55.9913, 10.5143,
25.8904

■ 68.5681, -0.6492,
12.5208

■ 53.2230, 14.1560,
27.6565

■ 72.0312, -2.6543,
7.8657

■ 50.6298, 18.1331,
28.7015

■ 75.6020, -4.3845,
2.7844

■ 48.2236, 22.4139,
29.0111

■ 79.2723, -5.8613,
-2.6811

■ 46.0121, 26.9286,
28.6462

■ 83.0346, -7.1052,
-8.4933

■ 45.4991, 28.0343,
28.5271

■ 86.6600, -9.3647,
-11.4920

■ 89.8353, -14.3831,
-7.3354

■ 93.0711, -19.3359,
-3.2575

Harmonies

Analogous

The Analogous color harmony consists of three colors that are next to each other on the color wheel.



62.0031, 14.6496, 15.7778



62.0016, 4.2715, 20.3605



62.0031, -7.4552, 20.9223

Triad

The Triadic color harmony groups three colors that are evenly spaced from another and form a triangle on the color wheel.



62.0031, 4.2691, 20.3613



62.0031, -23.8867, -0.7539



62.0031, 12.0606, -15.1043

Complementary

The Complementary color scheme is a pair of colors which are on the opposite of each other on the color wheel.



62.0016, 4.2715, 20.3605



57.7777, -5.9047, -18.7069

Split Complementary

Split-complementary colors differ from the complementary color scheme. The scheme consists of three colors, the original color and two neighbors of the complement color.



62.0031, 0.9437, -21.5231



62.0016, 4.2715, 20.3605



62.0031, -19.4357, -12.2753

Square

The Square scheme is like the rectangle color scheme, but the four colors are evenly spaced on the color wheel.



62.0031, 4.2691, 20.3613



62.0031, -23.1414, 10.0145



62.0031, -10.5448, -20.4014



62.0031, 19.3732, -4.0911

Rectangle

The Rectangle color scheme consists of four colors that form a rectangle on the color wheel.



62.0016, 4.2715, 20.3605



62.0031, -14.3970, 19.0818



62.0031, -10.5448, -20.4014



62.0031, 8.6117, -17.9554

Sweetspot

The Sweet Spot groups the original color and five complimentary colors.



62.0031, 4.2691, 20.3613



94.7101, -2.6284, 12.8421



53.4553, 28.1829, -3.4559



43.5214, -1.0469, 6.3410

0.0000, NaN, NaN



46.2646, -2.4686, 2.5136

Same Dimension

The Same Dimension uses a secret algorithm to generate beautiful new colors.



62.0031, 4.2691, 20.3613



79.6121, 8.8878, 30.6625



72.9609, -13.7535, 29.4892



33.9095, -1.0969, 4.1554



37.1262, 22.2123, 23.2658



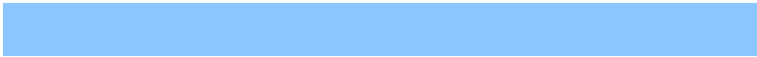
8.9304, 2.9813, 5.5551

Inverse Universe

The Inverse Universe completely reimagines the original color for something new.



57.7777, -5.9047, -18.7069



72.8224, -7.2969, -32.2819



47.3377, 12.6721, -36.7696



33.3900, -2.3676, -0.6284



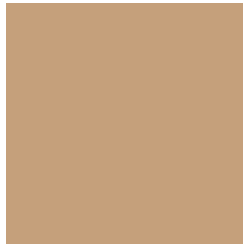
29.3675, 7.0499, -51.9257



7.4381, -0.3522, -8.5366

Previews

White Background



This preview shows how the HunterLab color 62.0016, 4.2715, 20.3605 looks on a white background.

Color Contrast Check

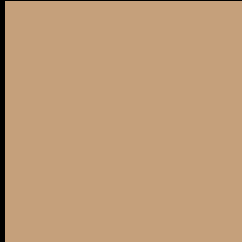
Large Text (above 18pt) WCAG AA × Fail

Any Text WCAG AA × Fail

Large Text (above 18pt) WCAG AAA × Fail

Any Text WCAG AAA × Fail

Black Background



This preview shows how the HunterLab color 62.0016, 4.2715, 20.3605 looks on a black background.

Color Contrast Check

Large Text (above 18pt) WCAG AA ✓ Pass

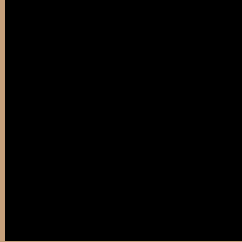
Any Text WCAG AA ✓ Pass

Large Text (above 18pt) WCAG AAA ✓ Pass

Any Text WCAG AAA ✓ Pass

If you want to check with other color combinations, try the [Color Contrast Checker](#).

HunterLab 62.0016, 4.2715, 20.3605 Background



This preview shows how black text looks on a background with the HunterLab color 62.0016, 4.2715, 20.3605.



This preview shows how white text looks on a background with the HunterLab color 62.0016, 4.2715,

Color Blindness Simulation

Color vision deficiency is a very complex topic, and I could not describe the different causes any better than Wikipedia does, so if you want to learn more, you should check out their [article about color blindness](#).

Dichromacy



Original Color

62.0016, 4.2715, 20.3605

Protanopia

62.2314, -5.1432, 19.4510

Deuteranopia

62.0016, 4.2715, 20.3605



Tritanopia

61.8724, 14.4095, 3.8070

Trichromacy



Original Color

62.0016, 4.2715, 20.3605

Protanomaly

62.0247, -1.4088, 19.6481

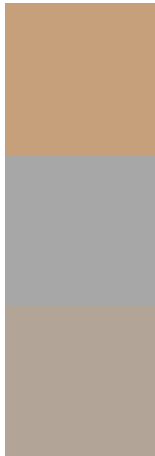
Deuteranomaly

62.0016, 4.2715, 20.3605

Tritanomaly

61.8533, 10.6914, 10.6425

Monochromacy



Original Color

62.0016, 4.2715, 20.3605

Achromatopsia

62.1634, -3.3169, 3.3775

Achromatomaly

61.8468, -0.8046, 10.0278

CSS Examples

Text

The CSS property to change the color of the text to HunterLab 62.0016, 4.2715, 20.3605 is called "color". The color property can be set on classes, ids or directly on the HTML element.

This example shows how text in the color `rgb(197, 160, 123)` looks like.

```
.text, #text, p{  
    color:rgb(197, 160, 123)  
}
```

If you want to add a text shadow in that color use the text-shadow property, you can generate a text shadow directly with our [CSS Text Shadow Generator](#).

Here you see how black text with a 4 pixel rgb(197, 160, 123) colored shadow looks like.

```
.shadow{ text-shadow: 4px 4px 2px rgb(197, 160, 123) }
```

Border

The CSS property to change the border of an element to HunterLab 62.0016, 4.2715, 20.3605 is called "border". The border property can be set on classes, ids or directly on the HTML element.

This example shows the color as border, it can be applied via the CSS property "border" or "border-color".

```
.border, #border, table{ border:4px solid rgb(197, 160, 123) }
```


If only the border color should be changed use the property `border-color`.

```
.border{ border-color:rgb(197, 160, 123) }
```

If you want to add a box shadow in that color use:

Here you see how a box with a 4 pixel `rgb(197, 160, 123)` colored shadow looks like.

```
.boxshadow{ -moz-box-shadow:4px 4px 4px  
4px rgb(197, 160, 123); -webkit-box-  
shadow:4px 4px 4px 4px rgb(197, 160, 123);  
box-shadow:4px 4px 4px 4px rgb(197, 160,  
123) }
```

Background

The CSS property to change the background color of an element to HunterLab 62.0016, 4.2715, 20.3605 is called "background". The background property can be set on classes, ids or directly on the HTML element.

```
.background, #background, body{  
background: rgb(197, 160, 123) }
```

If only the background color should be changed can be used:

```
.background{ background-color: rgb(197,  
160, 123) }
```

This example shows the color as background, it is applied via the CSS property "background".

To optimize and compress your CSS code, you can use our [online CSS compressor and optimizer](#) based on csstidy. If you want to create a linear or radial gradient as background or border, check our [CSS Gradient Generator](#).

Hey! You found this booklet interesting? Support Converting Colors with the new Membership Option!

The pro membership hides all ads, plus gives you double the colors in the color bucket, and more awesome pro features!

[Learn more, Memberships starting at \\$2.50/m!](#)

**Follow me
on Twitter!**

@ConvertingColor