

Converting Colors

HunterLab(62.0630, 7.0127,
21.1977)

Have a look what the booklet for
HunterLab(62.0630, 7.0127,
21.1977) contains.

HunterLab(62.0731, 7.2795, 21.0985)	3
<i>Conversions</i>	4
<i>Details</i>	6
<i>Harmonies</i>	12
<i>Previews</i>	24
<i>Color Blindness Simulation</i>	28
<i>CSS Examples</i>	31

Color

**HunterLab(62.0731, 7.2795,
21.0985)**

Conversions

Conversions Part 1

Format	Color
Hex	CB9E79
RGB	203, 158, 121
RGB Percent	80%, 62%, 47%
CMY	0.2039, 0.3804, 0.5255
CMYK	0.00, 0.22, 0.40, 0.20
HSL	27°, 44%, 64%
HSV	27°, 40%, 80%
XYZ	40.3066, 38.5307, 23.4019
YIQ	167.2370, 38.6970, -1.9670

Conversions

Conversions Part 2

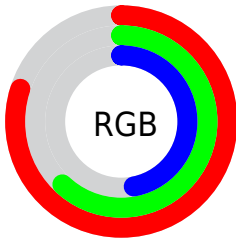
Format	Color
RYB	203, 188, 121
Decimal	13344377
CIELab	68.41, 11.81, 25.73
CIElCh	68, 28.315, 65.347
Yxy	38.5325, 0.3942, 0.3769
Android (android.graphics.Color)	4291534457 (0xFFC9B9E79)
YUV	167.2370, -22.7948, 31.3642
Hunter-Lab	62.0731, 7.2795, 21.0985

Details

The HunterLab color $62.0731, 7.2795, 21.0985$ is a light color, and the websafe version is hex $CC9966$. A complement of this color would be $59.7058, -7.9182, -19.4546$, and the grayscale version is $62.3420, -3.3264, 3.3872$.

A 20% lighter version of the original color is $84.7965, 4.5882, 24.3324$, and $41.4564, 6.9352, 16.8984$ is the 20% darker color. If you saturate the color by 10%, you get $58.6993, 10.9332, 24.0032$, and if you desaturate by 10%, it is $65.6188, 3.9705, 17.6282$.

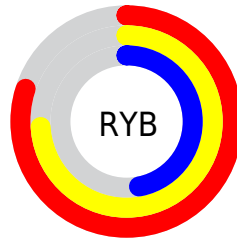
Distribution



Red (80%)

Green (62%)

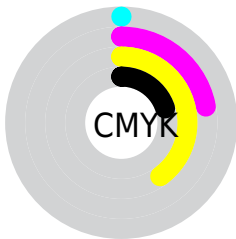
Blue (47%)



Red (80%)

Yellow (74%)

Blue (47%)

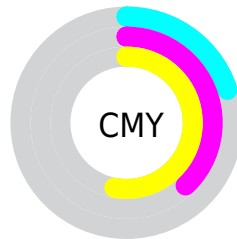


Cyan (0%)

Magenta (22%)

Yellow (40%)

Black (20%)



Cyan (20%)

Magenta (38%)

Yellow (53%)

Brightness & Saturation Gradients

These gradients show how the HunterLab color 62.0731, 7.2795, 21.0985 changes by changing the brightness by 10 percent. The first figure shows a shift by +10% for each color and the second figure -10%.

Similar to the brightness gradients but the following saturation gradients show a change of the HunterLab color 62.0731, 7.2795, 21.0985 by changing the saturation by 10% instead.

62.0731, 7.2795,
21.0985

62.0731, 7.2795,
21.0985

184.3635, 5.1279,
38.0516

51.3773, 7.2441,
19.0197

85.3953, 7.1473,
25.0720

41.3767, 7.1355,
16.8510

97.9527, 6.9966,
26.9922

32.1252, 6.9399,
14.5621

111.0715, 6.7948,
28.8811

23.6893, 6.6422,
12.1071

124.7288, 6.5454,
30.7455

16.1571, 6.2205,
9.7683

138.9040, 6.2516,
32.5908

9.6538, 5.6419,
6.7577

153.5789, 5.9160,

0.0000, INF, NaN

34.4213

0.0000, NaN, NaN

168.7370, 5.5408,
36.2406

0.0000, NaN, NaN

■ 62.0731, 7.2795,
21.0985

■ 62.0731, 7.2795,
21.0985

■ 58.6993, 10.9332,
24.0032

■ 65.6188, 3.9705,
17.6282

■ 55.5096, 14.9470,
26.2768

■ 69.3167, 0.9975,
13.6509

■ 52.5233, 19.3116,
27.8611

■ 73.1546, -1.6634,
9.2234

■ 49.7584, 23.9992,
28.7101

■ 77.1203, -4.0357,
4.3961

■ 47.2324, 28.9514,
28.8094

■ 81.2029, -6.1432,
-0.7867

45.0369, 33.8335,
28.3438

85.3929, -8.0091,
-6.2865

89.3842, -11.3045,
-7.8747

93.0109, -16.9623,
-3.2920

95.6224, -20.9167,
-0.1049

Harmonies

Analogous

The Analogous color harmony consists of three colors that are next to each other on the color wheel.



62.0746, 18.0397, 15.4446



62.0731, 7.2795, 21.0985



62.0746, -5.5903, 22.4469

Triad

The Triadic color harmony groups three colors that are evenly spaced from another and form a triangle on the color wheel.



62.0746, 7.2770, 21.0993



62.0746, -25.9483, 1.1593



62.0746, 11.5594, -18.8868

Complementary

The Complementary color scheme is a pair of colors which are on the opposite of each other on the color wheel.



62.0731, 7.2795, 21.0985



59.7058, -7.9182, -19.4546

Split Complementary

Split-complementary colors differ from the complementary color scheme. The scheme consists of three colors, the original color and two neighbors of the complement color.



62.0746, -1.0074, -24.7113



62.0731, 7.2795, 21.0985



62.0746, -22.1246, -11.7330

Square

The Square scheme is like the rectangle color scheme, but the four colors are evenly spaced on the color wheel.



62.0746, 7.2770, 21.0993



62.0746, -24.1188, 12.3647



62.0746, -13.2421, -21.8593



62.0746, 20.6490, -7.1904

Rectangle

The Rectangle color scheme consists of four colors that form a rectangle on the color wheel.



62.0731, 7.2795, 21.0985



62.0746, -13.4948, 21.0180



62.0746, -13.2421, -21.8593



62.0746, 7.5653, -21.6934

Sweetspot

The Sweet Spot groups the original color and five complimentary colors.



62.0746, 7.2770, 21.0993



93.7734, -1.5721, 12.9869



53.9708, 32.4152, -5.8611



43.0770, -0.5226, 6.3679

0.0000, NaN, NaN



46.2646, -2.4686, 2.5136

Same Dimension

The Same Dimension uses a secret algorithm to generate beautiful new colors.



62.0746, 7.2770, 21.0993



76.7065, 13.2854, 30.4586



74.0796, -12.8226, 30.9449



34.6893, -0.9018, 4.1321



36.1731, 26.3885, 22.7517



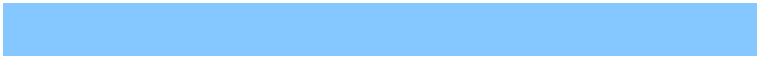
9.0878, 3.9953, 5.6698

Inverse Universe

The Inverse Universe completely reimagines the original color for something new.



59.7058, -7.9182, -19.4546



73.0570, -9.9376, -31.9362



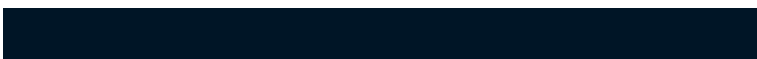
48.0310, 12.6129, -39.9268



34.4199, -2.6529, -0.4902



31.9653, 3.2358, -46.9390



8.2309, -0.9181, -8.3060

Previews

White Background



This preview shows how the HunterLab color 62.0731, 7.2795, 21.0985 looks on a white background.

Color Contrast Check

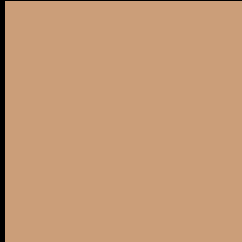
Large Text (above 18pt) WCAG AA × Fail

Any Text WCAG AA × Fail

Large Text (above 18pt) WCAG AAA × Fail

Any Text WCAG AAA × Fail

Black Background



This preview shows how the HunterLab color 62.0731, 7.2795, 21.0985 looks on a black background.

Color Contrast Check

Large Text (above 18pt) WCAG AA ✓ Pass

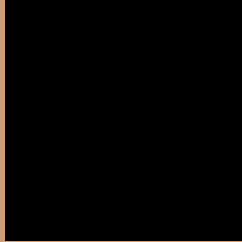
Any Text WCAG AA ✓ Pass

Large Text (above 18pt) WCAG AAA ✓ Pass

Any Text WCAG AAA ✓ Pass

If you want to check with other color combinations, try the [Color Contrast Checker](#).

HunterLab 62.0731, 7.2795, 21.0985 Background



This preview shows how black text looks on a background with the HunterLab color 62.0731, 7.2795, 21.0985.



This preview shows how white text looks on a background with the HunterLab color 62.0731, 7.2795,

Color Blindness Simulation

Color vision deficiency is a very complex topic, and I could not describe the different causes any better than Wikipedia does, so if you want to learn more, you should check out their [article about color blindness](#).

Dichromacy



Original Color

62.0731, 7.2795, 21.0985

Protanopia

62.2108, -5.2570, 19.7508

Deuteranopia

62.0708, 4.4237, 21.0464



Tritanopia

61.9695, 17.3172, 4.8852

Trichromacy



Original Color

62.0731, 7.2795, 21.0985

Protanomaly

62.2073, -0.8211, 20.1430

Deuteranomaly

62.0130, 5.6609, 21.0164

Tritanomaly

61.9444, 13.6466, 11.5924

Monochromacy



Original Color

62.0731, 7.2795, 21.0985

Achromatopsia

62.1634, -3.3169, 3.3775

Achromatomaly

62.0131, -0.2859, 10.6200

CSS Examples

Text

The CSS property to change the color of the text to HunterLab 62.0731, 7.2795, 21.0985 is called "color". The color property can be set on classes, ids or directly on the HTML element.

This example shows how text in the color `rgb(203, 158, 121)` looks like.

```
.text, #text, p{  
    color:rgb(203, 158, 121)  
}
```

If you want to add a text shadow in that color use the text-shadow property, you can generate a text shadow directly with our [CSS Text Shadow Generator](#).

Here you see how black text with a 4 pixel rgb(203, 158, 121) colored shadow looks like.

```
.shadow{ text-shadow: 4px 4px 2px rgb(203, 158, 121) }
```

Border

The CSS property to change the border of an element to HunterLab 62.0731, 7.2795, 21.0985 is called "border". The border property can be set on classes, ids or directly on the HTML element.

This example shows the color as border, it can be applied via the CSS property "border" or "border-color".

```
.border, #border, table{ border:4px solid rgb(203, 158, 121) }
```


If only the border color should be changed use the property `border-color`.

```
.border{ border-color:rgb(203, 158, 121) }
```

If you want to add a box shadow in that color use:

Here you see how a box with a 4 pixel `rgb(203, 158, 121)` colored shadow looks like.

```
.boxshadow{ -moz-box-shadow:4px 4px 4px 4px rgb(203, 158, 121); -webkit-box-shadow:4px 4px 4px 4px rgb(203, 158, 121); box-shadow:4px 4px 4px 4px rgb(203, 158, 121) }
```

Background

The CSS property to change the background color of an element to HunterLab 62.0731, 7.2795, 21.0985 is called "background". The background property can be set on classes, ids or directly on the HTML element.

```
.background, #background, body{  
background: rgb(203, 158, 121) }
```

If only the background color should be changed can be used:

```
.background{ background-color: rgb(203,  
158, 121) }
```

This example shows the color as background, it is applied via the CSS property "background".

To optimize and compress your CSS code, you can use our [online CSS compressor and optimizer](#) based on csstidy. If you want to create a linear or radial gradient as background or border, check our [CSS Gradient Generator](#).

Hey! You found this booklet interesting? Support Converting Colors with the new Membership Option!

The pro membership hides all ads, plus gives you double the colors in the color bucket, and more awesome pro features!

[Learn more, Memberships starting at \\$2.50/m!](#)

**Follow me
on Twitter!**

@ConvertingColor