

# Converting Colors

HunterLab(62.1209, 10.5890,  
7.5886)

Have a look what the booklet for  
HunterLab(62.1209, 10.5890,  
7.5886) contains.

<b>HunterLab(62.1195, 10.5904, 7.5888)</b> .....	3
<i><b>Conversions</b></i> .....	4
<i><b>Details</b></i> .....	6
<i><b>Harmonies</b></i> .....	12
<i><b>Previews</b></i> .....	24
<i><b>Color Blindness Simulation</b></i> .....	28
<i><b>CSS Examples</b></i> .....	31

# Color

**HunterLab(62.1195, 10.5904,  
7.5888)**

# Conversions

## Conversions Part 1

Format	Color
Hex	C69D9E
RGB	198, 157, 158
RGB Percent	78%, 62%, 62%
CMY	0.2235, 0.3843, 0.3804
CMYK	0.00, 0.21, 0.20, 0.22
HSL	359°, 26%, 70%
HSV	359°, 21%, 78%
XYZ	41.5172, 38.5883, 37.6079
YIQ	169.3730, 24.1150, 9.0030

# Conversions

## Conversions Part 2

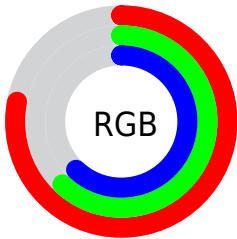
Format	Color
R <sub>YB</sub>	198, 157, 158
Decimal	13016478
CIE Lab	68.45, 15.35, 5.28
CIE LCh	68, 16.237, 18.987
Yxy	38.5901, 0.3527, 0.3278
Android (android.graphics.Color)	4291206558 (0xFFC69D9E)
YUV	169.3730, -5.6069, 25.1059
Hunter-Lab	62.1195, 10.5904, 7.5888

# Details

The HunterLab color **62.1195, 10.5904, 7.5888** is a light color, and the websafe version is hex **CC9999**. A complement of this color would be **71.8251, -15.9018, 0.3733**, and the grayscale version is **63.1592, -3.3700, 3.4316**.

A 20% lighter version of the original color is **85.5284, 10.5958, 9.2489**, and **41.4840, 9.7406, 5.8524** is the 20% darker color. If you saturate the color by 10%, you get **56.4006, 18.0845, 9.5207**, and if you desaturate by 10%, it is **68.2350, 3.3824, 5.8176**.

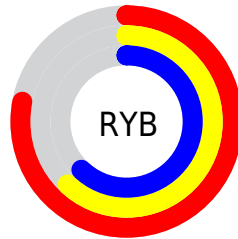
# Distribution



Red (78%)

Green (62%)

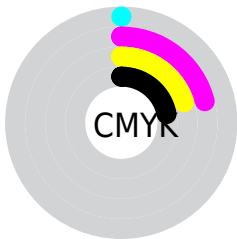
Blue (62%)



Red (78%)

Yellow (62%)

Blue (62%)

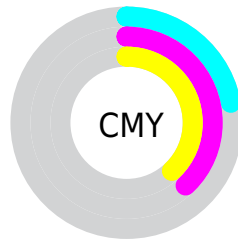


Cyan (0%)

Magenta (21%)

Yellow (20%)

Black (22%)



Cyan (22%)

Magenta (38%)


Yellow (38%)


# Brightness & Saturation Gradients

These gradients show how the HunterLab color 62.1195, 10.5904, 7.5888 changes by changing the brightness by 10 percent. The first figure shows a shift by +10% for each color and the second figure -10%.


Similar to the brightness gradients but the following saturation gradients show a change of the HunterLab color 62.1195, 10.5904, 7.5888 by changing the saturation by 10% instead.





 62.1195, 10.5904,  
7.5888


 62.1195, 10.5904,  
7.5888


184.4301, 9.7102,  
16.2029

 51.4208, 10.3836,  
6.7310

 85.4469, 10.7788,  
9.3644

 41.4172, 10.0938,  
5.8892


 98.0066, 10.7783,  
10.2813

 32.1625, 9.7063,  
5.0621

111.1278, 10.7211,  
11.2183

 23.7230, 9.2042,  
4.2448

124.7872, 10.6113,  
12.1754

 16.1867, 8.5642,  
3.4284

138.9646, 10.4525,  
13.1526

 9.6787, 7.7551,  
2.7956

153.6416, 10.2477,

0.0000, INF, NaN

14.1497

0.0000, NaN, NaN

168.8017, 9.9995,  
15.1665

0.0000, NaN, NaN

■ 62.1195, 10.5904,  
7.5888

■ 62.1195, 10.5904,  
7.5888

■ 56.4006, 18.0845,  
9.5207

■ 68.2350, 3.3824,  
5.8176

■ 51.1504, 25.8185,  
11.6077

■ 74.6819, -3.5327,  
4.1924

■ 46.4633, 33.6420,  
13.8200

■ 81.4132, -10.1812,  
2.6971

■ 42.4463, 41.2571,  
16.0789

■ 88.3906, -16.5965,  
1.3138

■ 39.2094, 48.1796,  
18.2409

■ 95.2469, -22.3150,  
-0.3797

■ 36.8415, 53.7860,  
20.1047

■ 95.2606, -22.2377,  
-0.5738

■ 35.3732, 57.5107,  
21.4652

■ 34.6647, 59.3947,  
22.1637

# Harmonies

## Analogous

The Analogous color harmony consists of three colors that are next to each other on the color wheel.



62.1209, 11.1404, 0.7635



62.1195, 10.5904, 7.5888



62.1209, 6.2105, 12.6766

# Triad

The Triadic color harmony groups three colors that are evenly spaced from another and form a triangle on the color wheel.



62.1209, 10.5882, 7.5898



62.1209, -13.6054, 11.5568



62.1209, -5.9892, -11.2814

# Complementary

The Complementary color scheme is a pair of colors which are on the opposite of each other on the color wheel.



62.1195, 10.5904, 7.5888



71.8251, -15.9018, 0.3733

# Split Complementary

Split-complementary colors differ from the complementary color scheme. The scheme consists of three colors, the original color and two neighbors of the complement color.



62.1209, -12.3046, -7.6173



62.1195, 10.5904, 7.5888



62.1209, -16.5641, 5.8901

# Square

The Square scheme is like the rectangle color scheme, but the four colors are evenly spaced on the color wheel.



62.1209, 10.5882, 7.5898



62.1209, -7.8401, 14.7767



62.1209, -16.0992, -1.1438



62.1209, 1.3374, -10.6893



# Rectangle

The Rectangle color scheme consists of four colors that form a rectangle on the color wheel.



62.1195, 10.5904, 7.5888



62.1209, 1.8205, 14.6467



62.1209, -16.0992, -1.1438



62.1209, -8.2946, -10.4912

# Sweetspot

The Sweet Spot groups the original color and five complimentary colors.



62.1209, 10.5882, 7.5898



94.7097, 0.2078, 6.7205



63.2565, 16.7954, -10.8040



43.5547, 0.3792, 3.1759

0.0000, NaN, NaN



46.2646, -2.4686, 2.5136



# Same Dimension

The Same Dimension uses a secret algorithm to generate beautiful new colors.



62.1209, 10.5882, 7.5898



79.0393, 18.7028, 11.2732



67.4866, 0.7293, 13.5717



32.6206, 1.1587, 2.6425



27.9577, 47.9096, 17.8246



6.0958, 10.4705, 3.6972



# Inverse Universe

The Inverse Universe completely reimagines the original color for something new.



62.1209, 10.5882, 7.5898



79.0393, 18.7028, 11.2732



65.9042, -6.4717, -7.5679



32.6206, 1.1587, 2.6425



27.9577, 47.9096, 17.8246

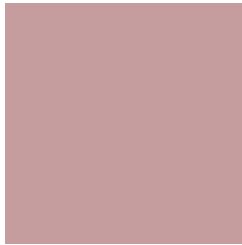


6.0958, 10.4705, 3.6972



# Previews

## White Background



This preview shows how the HunterLab color 62.1195, 10.5904, 7.5888 looks on a white background.

## Color Contrast Check

Large Text (above 18pt) WCAG AA × Fail

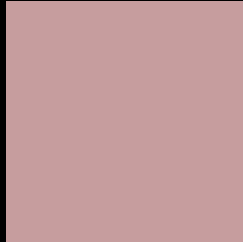
Any Text WCAG AA × Fail

Large Text (above 18pt) WCAG AAA × Fail

Any Text WCAG AAA × Fail



# Black Background



This preview shows how the HunterLab color 62.1195, 10.5904, 7.5888 looks on a black background.

## Color Contrast Check

Large Text (above 18pt) WCAG AA ✓ Pass

Any Text WCAG AA ✓ Pass

Large Text (above 18pt) WCAG AAA ✓ Pass

Any Text WCAG AAA ✓ Pass

If you want to check with other color combinations, try the [Color Contrast Checker](#).

## HunterLab 62.1195, 10.5904, 7.5888 Background



This preview shows how black text looks on a background with the HunterLab color 62.1195, 10.5904, 7.5888.



This preview shows how white text looks on a background with the HunterLab color 62.1195, 10.5904,

7.5888.

# Color Blindness Simulation

Color vision deficiency is a very complex topic, and I could not describe the different causes any better than Wikipedia does, so if you want to learn more, you should check out their [article about color blindness](#).

## Dichromacy



### Original Color

62.1195, 10.5904, 7.5888

### Protanopia

62.1085, -2.2322, 5.1540

### Deuteranopia

62.0394, 4.5748, 7.8238



## Tritanopia

62.2464, 12.9705, 3.2968

# Trichromacy



## Original Color

62.1195, 10.5904, 7.5888

## Protanomaly

62.1219, 2.1597, 6.1359

## Deuteranomaly

62.1710, 6.4544, 8.0023

## Tritanomaly

62.1284, 12.3541, 4.9821

# Monochromacy



## Original Color

62.1195, 10.5904, 7.5888

## Achromatopsia

62.9885, -3.3609, 3.4223

## Achromatomaly

62.7138, 1.4518, 5.0154

# CSS Examples

## Text

The CSS property to change the color of the text to HunterLab 62.1195, 10.5904, 7.5888 is called "color". The color property can be set on classes, ids or directly on the HTML element.

This example shows how text in the color `rgb(198, 157, 158)` looks like.

```
.text, #text, p{  
    color:rgb(198, 157, 158)  
}
```

If you want to add a text shadow in that color use the text-shadow property, you can generate a text shadow directly with our [CSS Text Shadow Generator](#).

Here you see how black text with a 4 pixel rgb(198, 157, 158) colored shadow looks like.

```
.shadow{ text-shadow: 4px 4px 2px rgb(198, 157, 158) }
```

## Border

The CSS property to change the border of an element to HunterLab 62.1195, 10.5904, 7.5888 is called "border". The border property can be set on classes, ids or directly on the HTML element.

This example shows the color as border, it can be applied via the CSS property "border" or "border-color".

```
.border, #border, table{ border:4px solid rgb(198, 157, 158) }
```



If only the border color should be changed use the property border-color.

```
.border{ border-color:rgb(198, 157, 158) }
```

If you want to add a box shadow in that color use:

Here you see how a box with a 4 pixel rgb(198, 157, 158) colored shadow looks like.

```
.boxshadow{ -moz-box-shadow:4px 4px 4px  
4px rgb(198, 157, 158); -webkit-box-  
shadow:4px 4px 4px 4px rgb(198, 157, 158);  
box-shadow:4px 4px 4px 4px rgb(198, 157,  
158) }
```

# Background

The CSS property to change the background color of an element to HunterLab 62.1195, 10.5904, 7.5888 is called "background". The background property can be set on classes, ids or directly on the HTML element.

```
.background, #background, body{  
background: rgb(198, 157, 158) }
```

If only the background color should be changed can be used:

```
.background{ background-color: rgb(198,  
157, 158) }
```

This example shows the color as background, it is applied via the CSS property "background".

To optimize and compress your CSS code, you can use our [online CSS compressor and optimizer](#) based on csstidy. If you want to create a linear or radial gradient as background or border, check our [CSS Gradient Generator](#).

Hey! You found this booklet interesting? Support Converting Colors with the new Membership Option!

The pro membership hides all ads, plus gives you double the colors in the color bucket, and more awesome pro features!

**[Learn more, Memberships starting at \\$2.50/m!](#)**

**Follow me  
on Twitter!**

@ConvertingColor