

Converting Colors

HunterLab(62.1570, 8.2207,
3.1606)

Have a look what the booklet for
HunterLab(62.1570, 8.2207, 3.1606)
contains.

HunterLab(62.1052, 8.2975, 3.0477)	3
<i>Conversions</i>	4
<i>Details</i>	6
<i>Harmonies</i>	12
<i>Previews</i>	24
<i>Color Blindness Simulation</i>	28
<i>CSS Examples</i>	31

Color

**HunterLab(62.1052, 8.2975,
3.0477)**

Conversions

Conversions Part 1

Format	Color
Hex	BE9FA8
RGB	190, 159, 168
RGB Percent	75%, 62%, 66%
CMY	0.2549, 0.3765, 0.3412
CMYK	0.00, 0.16, 0.12, 0.25
HSL	343°, 19%, 68%
HSV	343°, 16%, 75%
XYZ	40.7012, 38.5706, 42.3454
YIQ	169.2950, 15.5870, 9.3710

Conversions

Conversions Part 2

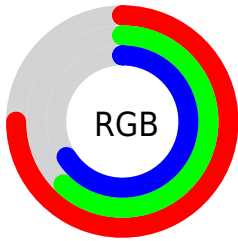
Format	Color
RYB	190, 159, 168
Decimal	12492712
CIELab	68.44, 12.91, -0.40
CIELCh	68, 12.914, 358.223
Yxy	38.5723, 0.3347, 0.3172
Android (android.graphics.Color)	4290682792 (0xFFBE9FA8)
YUV	169.2950, -0.6384, 18.1583
Hunter-Lab	62.1052, 8.2975, 3.0477

Details

The HunterLab color $62.1052, 8.2975, 3.0477$ is a light color, and the websafe version is hex $CC9999$. A complement of this color would be $68.9456, -14.3674, 4.6367$, and the grayscale version is $63.1095, -3.3674, 3.4289$.

A 20% lighter version of the original color is $85.5541, 8.2701, 4.4822$, and $41.2439, 8.1641, 1.8046$ is the 20% darker color. If you saturate the color by 10%, you get $56.6172, 15.9637, 2.9153$, and if you desaturate by 10%, it is $67.9309, 0.8040, 3.4887$.

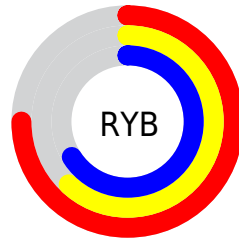
Distribution



Red (75%)

Green (62%)

Blue (66%)



Red (75%)

Yellow (62%)

Blue (66%)

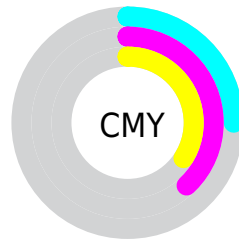


Cyan (0%)

Magenta (16%)

Yellow (12%)

Black (25%)



Cyan (25%)

Magenta (38%)

Yellow (34%)

Brightness & Saturation Gradients

These gradients show how the HunterLab color 62.1052, 8.2975, 3.0477 changes by changing the brightness by 10 percent. The first figure shows a shift by +10% for each color and the second figure -10%.

Similar to the brightness gradients but the following saturation gradients show a change of the HunterLab color 62.1052, 8.2975, 3.0477 by changing the saturation by 10% instead.

62.1052, 8.2975,
3.0477

62.1052, 8.2975,
3.0477

184.4095, 6.5416,
9.5616

51.4073, 8.2092,
2.4866

85.4309, 8.2656,
4.2814

41.4047, 8.0440,
1.9636

97.9899, 8.1616,
4.9478

32.1509, 7.7884,
1.4832

111.1104, 8.0048,
5.6456

23.7126, 7.4266,
1.0494

124.7691, 7.7988,
6.3732

16.1776, 6.9360,
0.6678

138.9458, 7.5469,
7.1297

9.6710, 6.2838,
0.3467

153.6222, 7.2519,

0.0000, INF, NaN

7.9139

0.0000, NaN, NaN

168.7817, 6.9161,
8.7248

0.0000, NaN, NaN

■ 62.1052, 8.2975,
3.0477

■ 62.1052, 8.2975,
3.0477

■ 56.6172, 15.9637,
2.9153

■ 67.9309, 0.8040,
3.4887

■ 51.5238, 23.7547,
3.1534

■ 74.0410, -6.4995,
4.1796

■ 46.9014, 31.5411,
3.8343

■ 80.3978, -13.6246,
5.0769

■ 42.8377, 39.0803,
5.0223

■ 86.9698, -20.5905,
6.1449

■ 39.4281, 45.9795,
6.7504

■ 93.7320, -27.4193,
7.3553

■ 36.7613, 51.7076,
8.9840

■ 94.4994, -25.4428,
1.5989

■ 34.8931, 55.7143,
11.5867

■ 94.7034, -24.2828,
-1.2995

■ 33.8035, 57.7024,
14.3129

■ 33.5030, 58.2024,
15.2342

Harmonies

Analogous

The Analogous color harmony consists of three colors that are next to each other on the color wheel.



62.1066, 6.5080, -2.5046



62.1052, 8.2975, 3.0477



62.1066, 6.8775, 8.2175

Triad

The Triadic color harmony groups three colors that are evenly spaced from another and form a triangle on the color wheel.



62.1066, 8.2956, 3.0488



62.1066, -8.5327, 12.0660



62.1066, -9.1140, -6.3906

Complementary

The Complementary color scheme is a pair of colors which are on the opposite of each other on the color wheel.



62.1052, 8.2975, 3.0477



68.9456, -14.3674, 4.6367

Split Complementary

Split-complementary colors differ from the complementary color scheme. The scheme consists of three colors, the original color and two neighbors of the complement color.



62.1066, -12.8940, -1.8795



62.1052, 8.2975, 3.0477



62.1066, -12.5671, 8.7410

Square

The Square scheme is like the rectangle color scheme, but the four colors are evenly spaced on the color wheel.



62.1066, 8.2956, 3.0488



62.1066, -2.9689, 13.1273



62.1066, -14.1348, 3.7106



62.1066, -3.6647, -8.2571

Rectangle

The Rectangle color scheme consists of four colors that form a rectangle on the color wheel.



62.1052, 8.2975, 3.0477



62.1066, 4.3333, 10.8225



62.1066, -14.1348, 3.7106



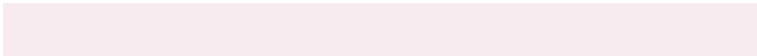
62.1066, -10.6144, -5.1139

Sweetspot

The Sweet Spot groups the original color and five complimentary colors.



62.1066, 8.2956, 3.0488



92.4398, -0.1433, 4.7940



61.8897, 9.0194, -8.3753



43.0484, 0.2642, 2.2198



98.8636, -5.2751, 5.3714



45.2661, -2.4153, 2.4594

Same Dimension

The Same Dimension uses a secret algorithm to generate beautiful new colors.



62.1066, 8.2956, 3.0488



80.5833, 15.2805, 3.9779



63.5881, 3.7731, 8.6630



30.9527, 1.4311, 1.5569



27.3416, 47.5415, 12.1001



5.5190, 9.8042, 0.8326

Inverse Universe

The Inverse Universe completely reimagines the original color for something new.



62.1066, 8.2956, 3.0488



80.5833, 15.2805, 3.9779



67.2961, -9.8329, -1.6246



30.9527, 1.4311, 1.5569



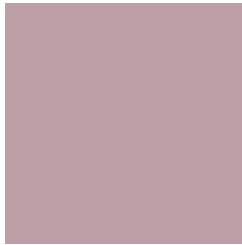
27.3416, 47.5415, 12.1001



5.5190, 9.8042, 0.8326

Previews

White Background



This preview shows how the HunterLab color 62.1052, 8.2975, 3.0477 looks on a white background.

Color Contrast Check

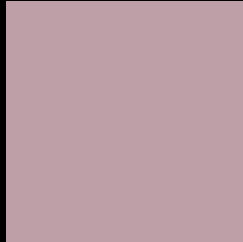
Large Text (above 18pt) WCAG AA × Fail

Any Text WCAG AA × Fail

Large Text (above 18pt) WCAG AAA × Fail

Any Text WCAG AAA × Fail

Black Background



This preview shows how the HunterLab color 62.1052, 8.2975, 3.0477 looks on a black background.

Color Contrast Check

Large Text (above 18pt) WCAG AA ✓ Pass

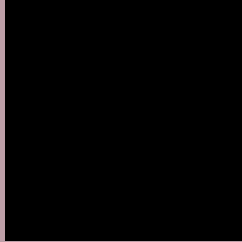
Any Text WCAG AA ✓ Pass

Large Text (above 18pt) WCAG AAA ✓ Pass

Any Text WCAG AAA ✓ Pass

If you want to check with other color combinations, try the [Color Contrast Checker](#).

HunterLab 62.1052, 8.2975, 3.0477 Background



This preview shows how black text looks on a background with the HunterLab color 62.1052, 8.2975, 3.0477.



This preview shows how white text looks on a background with the HunterLab color 62.1052, 8.2975,

Color Blindness Simulation

Color vision deficiency is a very complex topic, and I could not describe the different causes any better than Wikipedia does, so if you want to learn more, you should check out their [article about color blindness](#).

Dichromacy



Original Color

62.1052, 8.2975, 3.0477

Protanopia

62.1981, -1.3852, 1.0970

Deuteranopia

62.2077, 4.2601, 3.5622



Tritanopia

62.1962, 8.7787, 1.7509

Trichromacy



Original Color

62.1052, 8.2975, 3.0477

Protanomaly

62.0337, 2.4519, 1.4438

Deuteranomaly

62.2245, 5.7658, 3.6083

Tritanomaly

62.1657, 8.6172, 2.1860

Monochromacy



Original Color

62.1052, 8.2975, 3.0477

Achromatopsia

62.9885, -3.3609, 3.4223

Achromatomaly

62.5475, 1.1220, 2.9800

CSS Examples

Text

The CSS property to change the color of the text to HunterLab 62.1052, 8.2975, 3.0477 is called "color". The color property can be set on classes, ids or directly on the HTML element.

This example shows how text in the color `rgb(190, 159, 168)` looks like.

```
.text, #text, p{  
    color:rgb(190, 159, 168)  
}
```

If you want to add a text shadow in that color use the text-shadow property, you can generate a text shadow directly with our [CSS Text Shadow Generator](#).

Here you see how black text with a 4 pixel rgb(190, 159, 168) colored shadow looks like.

```
.shadow{ text-shadow: 4px 4px 2px rgb(190, 159, 168) }
```

Border

The CSS property to change the border of an element to HunterLab 62.1052, 8.2975, 3.0477 is called "border". The border property can be set on classes, ids or directly on the HTML element.

This example shows the color as border, it can be applied via the CSS property "border" or "border-color".

```
.border, #border, table{ border:4px solid rgb(190, 159, 168) }
```


If only the border color should be changed use the property `border-color`.

```
.border{ border-color:rgb(190, 159, 168) }
```

If you want to add a box shadow in that color use:

Here you see how a box with a 4 pixel `rgb(190, 159, 168)` colored shadow looks like.

```
.boxshadow{ -moz-box-shadow:4px 4px 4px  
4px rgb(190, 159, 168); -webkit-box-  
shadow:4px 4px 4px 4px rgb(190, 159, 168);  
box-shadow:4px 4px 4px 4px rgb(190, 159,  
168) }
```

Background

The CSS property to change the background color of an element to HunterLab 62.1052, 8.2975, 3.0477 is called "background". The background property can be set on classes, ids or directly on the HTML element.

```
.background, #background, body{  
background: rgb(190, 159, 168) }
```

If only the background color should be changed can be used:

```
.background{ background-color: rgb(190,  
159, 168) }
```

This example shows the color as background, it is applied via the CSS property "background".

To optimize and compress your CSS code, you can use our [online CSS compressor and optimizer](#) based on csstidy. If you want to create a linear or radial gradient as background or border, check our [CSS Gradient Generator](#).

Hey! You found this booklet interesting? Support Converting Colors with the new Membership Option!

The pro membership hides all ads, plus gives you double the colors in the color bucket, and more awesome pro features!

[Learn more, Memberships starting at \\$2.50/m!](#)

**Follow me
on Twitter!**

@ConvertingColor