

Converting Colors

HunterLab(62.1683, 17.2313,
7.2715)

Have a look what the booklet for
HunterLab(62.1683, 17.2313,
7.2715) contains.

HunterLab(62.0604, 17.3176, 7.2079)	3
<i>Conversions</i>	4
<i>Details</i>	6
<i>Harmonies</i>	12
<i>Previews</i>	24
<i>Color Blindness Simulation</i>	28
<i>CSS Examples</i>	31

Color

**HunterLab(62.0604, 17.3176,
7.2079)**

Conversions

Conversions Part 1

Format	Color
Hex	D1989F
RGB	209, 152, 159
RGB Percent	82%, 60%, 62%
CMY	0.1804, 0.4039, 0.3765
CMYK	0.00, 0.27, 0.24, 0.18
HSL	353°, 38%, 71%
HSV	353°, 27%, 82%
XYZ	43.7807, 38.5149, 37.9275
YIQ	169.8410, 31.7250, 14.2610

Conversions

Conversions Part 2

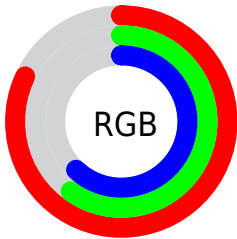
Format	Color
R _Y B	209, 152, 159
Decimal	13736095
CIE Lab	68.40, 22.36, 4.79
CIE LCh	68, 22.865, 12.103
Yxy	38.5167, 0.3642, 0.3204
Android (android.graphics.Color)	4291926175 (0xFFD1989F)
YUV	169.8410, -5.3446, 34.3424
Hunter-Lab	62.0604, 17.3176, 7.2079

Details

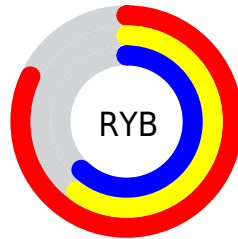
The HunterLab color **62.0604, 17.3176, 7.2079** is a light color, and the websafe version is hex **CC9999**. A complement of this color would be **75.1940, -21.4150, 1.8984**, and the grayscale version is **63.3493, -3.3802, 3.4419**.

A 20% lighter version of the original color is **84.1075, 13.4485, 7.2155**, and **41.4275, 15.8194, 5.4998** is the 20% darker color. If you saturate the color by 10%, you get **56.3288, 25.6702, 8.7718**, and if you desaturate by 10%, it is **68.2597, 9.1761, 5.9402**.

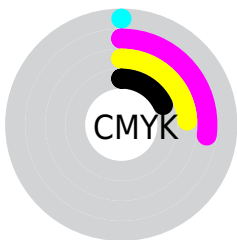
Distribution



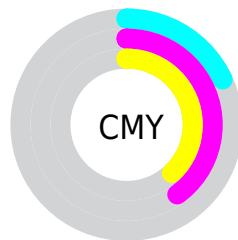
- Red (82%)
- Green (60%)
- Blue (62%)



- Red (82%)
- Yellow (60%)
- Blue (62%)



- Cyan (0%)
- Magenta (27%)
- Yellow (24%)
- Black (18%)



- Cyan (18%)
- Magenta (40%)
- Yellow (38%)

Brightness & Saturation Gradients

These gradients show how the HunterLab color 62.0604, 17.3176, 7.2079 changes by changing the brightness by 10 percent. The first figure shows a shift by +10% for each color and the second figure -10%.

Similar to the brightness gradients but the following saturation gradients show a change of the HunterLab color 62.0604, 17.3176, 7.2079 by changing the saturation by 10% instead.

62.0604, 17.3176,
7.2079

62.0604, 17.3176,
7.2079

184.3452, 18.8972,
15.6363

51.3653, 16.7829,
6.3766

85.3812, 18.1206,
8.9354

41.3656, 16.1502,
5.5634

97.9379, 18.4100,
9.8301

32.1150, 15.4030,
4.7675

111.0561, 18.6326,
10.7459

23.6801, 14.5241,
3.9849

124.7127, 18.7934,
11.6827

16.1490, 13.4934,
3.2082

138.8873, 18.8967,
12.6404

9.6470, 12.2985,
2.5900

153.5617, 18.9464,

0.0000, INF, NaN

13.6188

0.0000, NaN, NaN

168.7193, 18.9456,
14.6175

0.0000, NaN, NaN

■ 62.0604, 17.3176,
7.2079

■ 62.0604, 17.3176,
7.2079

■ 56.3288, 25.6702,
8.7718

■ 68.2597, 9.1761,
5.9402

■ 51.1516, 34.1084,
10.6496

■ 74.8484, 1.2998,
4.9308

■ 46.6373, 42.3579,
12.8304

■ 81.7689, -6.3138,
4.1435

■ 42.9013, 49.9622,
15.2412

■ 88.9745, -13.6866,
3.5440

■ 40.0477, 56.2972,
17.7246

■ 95.9270, -20.0960,
2.5145

■ 38.1352, 60.7275,
20.0454

■ 96.0705, -19.2881,
0.4732

■ 37.1165, 62.9673,
21.9401

■ 36.9166, 63.4187,
22.3210

Harmonies

Analogous

The Analogous color harmony consists of three colors that are next to each other on the color wheel.



62.0618, 16.7308, -2.7106



62.0604, 17.3176, 7.2079



62.0618, 12.1132, 14.7536

Triad

The Triadic color harmony groups three colors that are evenly spaced from another and form a triangle on the color wheel.



62.0618, 17.3152, 7.2090



62.0618, -16.0730, 15.8207



62.0618, -9.2990, -17.4156

Complementary

The Complementary color scheme is a pair of colors which are on the opposite of each other on the color wheel.



62.0604, 17.3176, 7.2079



75.1940, -21.4150, 1.8984

Split Complementary

Split-complementary colors differ from the complementary color scheme. The scheme consists of three colors, the original color and two neighbors of the complement color.



62.0618, -17.3689, -10.6653



62.0604, 17.3176, 7.2079



62.0618, -21.1004, 8.9064

Square

The Square scheme is like the rectangle color scheme, but the four colors are evenly spaced on the color wheel.



62.0618, 17.3152, 7.2090



62.0618, -7.4228, 19.1529



62.0618, -21.5587, -0.7135



62.0618, 0.9030, -18.0709

Rectangle

The Rectangle color scheme consists of four colors that form a rectangle on the color wheel.



62.0604, 17.3176, 7.2079



62.0618, 6.2504, 17.8591



62.0618, -21.5587, -0.7135



62.0618, -12.3336, -15.7386

Sweetspot

The Sweet Spot groups the original color and five complimentary colors.



62.0618, 17.3152, 7.2090



93.0421, 2.4254, 6.2678



62.8767, 23.2036, -17.7303



42.4539, 1.8085, 2.9816

0.0000, NaN, NaN



46.2646, -2.4686, 2.5136

Same Dimension

The Same Dimension uses a secret algorithm to generate beautiful new colors.



62.0618, 17.3152, 7.2090



73.2617, 28.0514, 10.1776



67.5815, 5.5743, 15.6779



34.3970, 1.3877, 2.4022



29.0012, 49.8477, 17.3264



6.9158, 12.0023, 3.2387

Inverse Universe

The Inverse Universe completely reimagines the original color for something new.



62.0618, 17.3152, 7.2090



73.2617, 28.0514, 10.1776



68.7673, -10.1197, -9.8115



34.3970, 1.3877, 2.4022



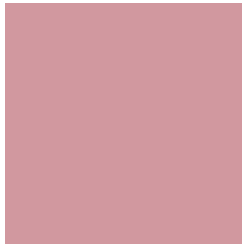
29.0012, 49.8477, 17.3264



6.9158, 12.0023, 3.2387

Previews

White Background



This preview shows how the HunterLab color 62.0604, 17.3176, 7.2079 looks on a white background.

Color Contrast Check

Large Text (above 18pt) WCAG AA × Fail

Any Text WCAG AA × Fail

Large Text (above 18pt) WCAG AAA × Fail

Any Text WCAG AAA × Fail

Black Background



This preview shows how the HunterLab color 62.0604, 17.3176, 7.2079 looks on a black background.

Color Contrast Check

Large Text (above 18pt) WCAG AA ✓ Pass

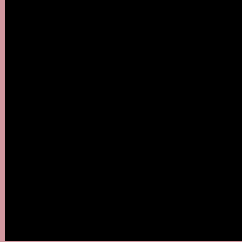
Any Text WCAG AA ✓ Pass

Large Text (above 18pt) WCAG AAA ✓ Pass

Any Text WCAG AAA ✓ Pass

If you want to check with other color combinations, try the [Color Contrast Checker](#).

HunterLab 62.0604, 17.3176, 7.2079 Background



This preview shows how black text looks on a background with the HunterLab color 62.0604, 17.3176, 7.2079.



This preview shows how white text looks on a background with the HunterLab color 62.0604, 17.3176, 7.2079.

Color Blindness Simulation

Color vision deficiency is a very complex topic, and I could not describe the different causes any better than Wikipedia does, so if you want to learn more, you should check out their [article about color blindness](#).

Dichromacy



Original Color

62.0604, 17.3176, 7.2079

Protanopia

62.1357, -1.9036, 3.3696

Deuteranopia

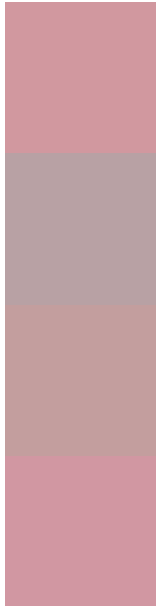
62.0394, 4.5748, 7.8238



Tritanopia

61.9135, 18.4248, 5.2913

Trichromacy



Original Color

62.0604, 17.3176, 7.2079

Protanomaly

61.9358, 4.6245, 4.6239

Deuteranomaly

62.0681, 9.0160, 7.5040

Tritanomaly

61.8847, 18.2768, 5.7038

Monochromacy



Original Color

62.0604, 17.3176, 7.2079

Achromatopsia

63.4017, -3.3830, 3.4447

Achromatomaly

62.5603, 3.9283, 4.4276

CSS Examples

Text

The CSS property to change the color of the text to HunterLab 62.0604, 17.3176, 7.2079 is called "color". The color property can be set on classes, ids or directly on the HTML element.

This example shows how text in the color `rgb(209, 152, 159)` looks like.

```
.text, #text, p{  
    color:rgb(209, 152, 159)  
}
```

If you want to add a text shadow in that color use the text-shadow property, you can generate a text shadow directly with our [CSS Text Shadow Generator](#).

Here you see how black text with a 4 pixel rgb(209, 152, 159) colored shadow looks like.

```
.shadow{ text-shadow: 4px 4px 2px rgb(209, 152, 159) }
```

Border

The CSS property to change the border of an element to HunterLab 62.0604, 17.3176, 7.2079 is called "border". The border property can be set on classes, ids or directly on the HTML element.

This example shows the color as border, it can be applied via the CSS property "border" or "border-color".

```
.border, #border, table{ border:4px solid rgb(209, 152, 159) }
```


If only the border color should be changed use the property `border-color`.

```
.border{ border-color:rgb(209, 152, 159) }
```

If you want to add a box shadow in that color use:

Here you see how a box with a 4 pixel `rgb(209, 152, 159)` colored shadow looks like.

```
.boxshadow{ -moz-box-shadow:4px 4px 4px  
4px rgb(209, 152, 159); -webkit-box-  
shadow:4px 4px 4px 4px rgb(209, 152, 159);  
box-shadow:4px 4px 4px 4px rgb(209, 152,  
159) }
```

Background

The CSS property to change the background color of an element to HunterLab 62.0604, 17.3176, 7.2079 is called "background". The background property can be set on classes, ids or directly on the HTML element.

```
.background, #background, body{  
background: rgb(209, 152, 159) }
```

If only the background color should be changed can be used:

```
.background{ background-color: rgb(209,  
152, 159) }
```

This example shows the color as background, it is applied via the CSS property "background".

To optimize and compress your CSS code, you can use our [online CSS compressor and optimizer](#) based on csstidy. If you want to create a linear or radial gradient as background or border, check our [CSS Gradient Generator](#).

Hey! You found this booklet interesting? Support Converting Colors with the new Membership Option!

The pro membership hides all ads, plus gives you double the colors in the color bucket, and more awesome pro features!

[Learn more, Memberships starting at \\$2.50/m!](#)

**Follow me
on Twitter!**

@ConvertingColor