

# Converting Colors

HunterLab(62.1905, 12.0899,  
19.3910)

Have a look what the booklet for  
HunterLab(62.1905, 12.0899,  
19.3910) contains.

<b>HunterLab(62.1905, 12.0899, 19.3910)</b> .....	3
<b><i>Conversions</i></b> .....	4
<b><i>Details</i></b> .....	6
<b><i>Harmonies</i></b> .....	12
<b><i>Previews</i></b> .....	24
<b><i>Color Blindness Simulation</i></b> .....	28
<b><i>CSS Examples</i></b> .....	31

# Color

**HunterLab(62.1905, 12.0899,  
19.3910)**

# Conversions

## Conversions Part 1

Format	Color
Hex	D29B7F
RGB	210, 155, 127
RGB Percent	82%, 61%, 50%
CMY	0.1765, 0.3921, 0.5020
CMYK	0.00, 0.26, 0.40, 0.18
HSL	20°, 48%, 66%
HSV	20°, 40%, 82%
XYZ	42.1304, 38.6766, 25.3234
YIQ	168.2530, 41.7680, 2.9520

# Conversions

## Conversions Part 2

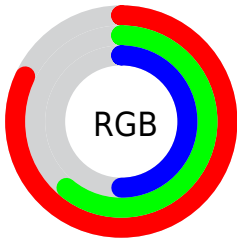
<b>Format</b>	<b>Color</b>
R <sub>Y</sub> B	210, 169, 127
Decimal	13802367
CIE Lab	68.52, 16.93, 22.72
CIE LCh	69, 28.341, 53.307
Yxy	38.6784, 0.3970, 0.3644
Android (android.graphics.Color)	4291992447 (0xFFD29B7F)
YUV	168.2530, -20.3377, 36.6121
Hunter-Lab	62.1905, 12.0899, 19.3910

# Details

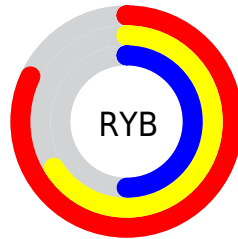
The HunterLab color  $62.1905, 12.0899, 19.3910$  is a light color, and the websafe version is hex  $CC9966$ . A complement of this color would be  $65.2835, -12.7722, -15.3712$ , and the grayscale version is  $62.7504, -3.3482, 3.4093$ .

A 20% lighter version of the original color is  $84.0526, 6.9266, 21.4553$ , and  $41.6182, 11.4550, 15.5772$  is the 20% darker color. If you saturate the color by 10%, you get  $58.1539, 17.0737, 22.2307$ , and if you desaturate by 10%, it is  $66.4725, 7.4578, 16.1005$ .

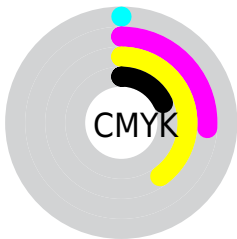
# Distribution



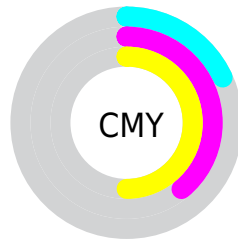
- Red (82%)
- Green (61%)
- Blue (50%)



- Red (82%)
- Yellow (66%)
- Blue (50%)



- Cyan (0%)
- Magenta (26%)
- Yellow (40%)
- Black (18%)



- Cyan (18%)
- Magenta (39%)
- Yellow (50%)

# Brightness & Saturation Gradients

These gradients show how the HunterLab color 62.1905, 12.0899, 19.3910 changes by changing the brightness by 10 percent. The first figure shows a shift by +10% for each color and the second figure -10%.

Similar to the brightness gradients but the following saturation gradients show a change of the HunterLab color 62.1905, 12.0899, 19.3910 by changing the saturation by 10% instead.



62.1905, 12.0899,  
19.3910

62.1905, 12.0899,  
19.3910

184.5322, 11.7675,  
35.0488

51.4875, 11.8077,  
17.5043

85.5259, 12.4178,  
23.0202

41.4793, 11.4393,  
15.5448

98.0894, 12.4832,  
24.7839

32.2195, 10.9690,  
13.4865

111.2140, 12.4895,  
26.5248

23.7745, 10.3794,  
11.2887

124.8769, 12.4411,  
28.2484

16.2321, 9.6474,  
9.0126

139.0575, 12.3416,  
29.9594

9.7170, 8.7439,  
6.8019

153.7377, 12.1945,

0.0000, INF, NaN

31.6612

0.0000, NaN, NaN

168.9009, 12.0023,  
33.3569

0.0000, NaN, NaN

■ 62.1905, 12.0899,  
19.3910

■ 62.1905, 12.0899,  
19.3910

■ 58.1539, 17.0737,  
22.2307

■ 66.4725, 7.4578,  
16.1005

■ 54.3892, 22.4101,  
24.5377

■ 70.9682, 3.1738,  
12.4261

■ 50.9319, 28.0592,  
26.2286

■ 75.6557, -0.7871,  
8.4272

■ 47.8181, 33.9390,  
27.2255

■ 80.5147, -4.4519,  
4.1523

■ 45.0832, 39.9080,  
27.4804

■ 85.5280, -7.8489,  
-0.3595

■ 42.7511, 45.7283,  
27.1037

■ 90.6806, -11.0059,  
-5.0761

■ 42.6494, 45.9935,  
27.0855

■ 95.2881, -17.7047,  
-0.4605

■ 96.1466, -19.0123,  
0.5712

# Harmonies

## Analogous

The Analogous color harmony consists of three colors that are next to each other on the color wheel.



62.1920, 20.9485, 11.9588



62.1905, 12.0899, 19.3910



62.1920, -0.4255, 22.4464

# Triad

The Triadic color harmony groups three colors that are evenly spaced from another and form a triangle on the color wheel.



62.1920, 12.0872, 19.3919



62.1920, -25.9382, 6.0541



62.1920, 6.7244, -22.2001

# Complementary

The Complementary color scheme is a pair of colors which are on the opposite of each other on the color wheel.



62.1905, 12.0899, 19.3910



65.2835, -12.7722, -15.3712

# Split Complementary

Split-complementary colors differ from the complementary color scheme. The scheme consists of three colors, the original color and two neighbors of the complement color.



62.1920, -6.1659, -24.6639



62.1905, 12.0899, 19.3910



62.1920, -24.3603, -6.6146

# Square

The Square scheme is like the rectangle color scheme, but the four colors are evenly spaced on the color wheel.



62.1920, 12.0872, 19.3919



62.1920, -21.8614, 15.8190



62.1920, -17.3627, -18.4799



62.1920, 17.6814, -12.3018



# Rectangle

The Rectangle color scheme consists of four colors that form a rectangle on the color wheel.



62.1905, 12.0899, 19.3910



62.1920, -8.8888, 22.1394



62.1920, -17.3627, -18.4799



62.1920, 2.4483, -23.9980

# Sweetspot

The Sweet Spot groups the original color and five complimentary colors.



62.1920, 12.0872, 19.3919



92.6945, 0.2706, 11.8333



56.8083, 34.5849, -10.7677



42.5255, 0.4226, 5.7830

0.0000, NaN, NaN



46.2646, -2.4686, 2.5136



# Same Dimension

The Same Dimension uses a secret algorithm to generate beautiful new colors.



62.1920, 12.0872, 19.3919



73.4186, 19.9911, 27.0347



74.0197, -8.5080, 29.3782



35.2857, -0.3876, 3.9049



33.5602, 35.2259, 21.2963



8.8042, 6.0918, 5.5317



# Inverse Universe

The Inverse Universe completely reimagines the original color for something new.



65.2835, -12.7722, -15.3712



77.9496, -16.7513, -24.2215



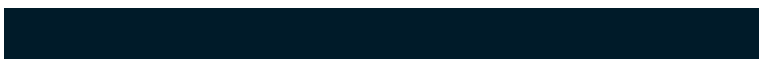
53.0718, 7.6415, -35.2803



35.6470, -3.2525, -0.1189



37.8416, -5.6721, -35.0544



9.7166, -2.5011, -6.7458



# Previews

## White Background



This preview shows how the HunterLab color 62.1905, 12.0899, 19.3910 looks on a white background.

## Color Contrast Check

Large Text (above 18pt) WCAG AA × Fail

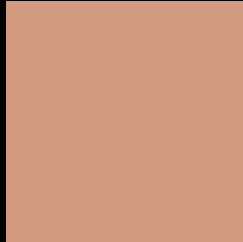
Any Text WCAG AA × Fail

Large Text (above 18pt) WCAG AAA × Fail

Any Text WCAG AAA × Fail



# Black Background



This preview shows how the HunterLab color 62.1905, 12.0899, 19.3910 looks on a black background.

## Color Contrast Check

Large Text (above 18pt) WCAG AA ✓ Pass

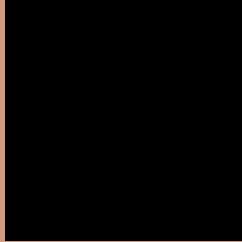
Any Text WCAG AA ✓ Pass

Large Text (above 18pt) WCAG AAA ✓ Pass

Any Text WCAG AAA ✓ Pass

If you want to check with other color combinations, try the [Color Contrast Checker](#).

## HunterLab 62.1905, 12.0899, 19.3910 Background



This preview shows how black text looks on a background with the HunterLab color 62.1905, 12.0899, 19.3910.



This preview shows how white text looks on a background with the HunterLab color 62.1905, 12.0899, 19.3910.



# Color Blindness Simulation

Color vision deficiency is a very complex topic, and I could not describe the different causes any better than Wikipedia does, so if you want to learn more, you should check out their [article about color blindness](#).

## Dichromacy



### Original Color

62.1905, 12.0899, 19.3910

### Protanopia

62.2863, -4.6504, 17.1763

### Deuteranopia

62.3429, 4.1012, 19.7152



## Tritanopia

62.1027, 20.2845, 5.9883

# Trichromacy



## Original Color

62.1905, 12.0899, 19.3910

## Protanomaly

62.2738, 1.1732, 17.9495

## Deuteranomaly

62.3371, 6.9408, 19.7596

## Tritanomaly

62.1478, 17.0559, 11.4675

# Monochromacy



## Original Color

62.1905, 12.0899, 19.3910

## Achromatopsia

62.5758, -3.3389, 3.3999

## Achromatomaly

62.0980, 1.6383, 9.5189

# CSS Examples

## Text

The CSS property to change the color of the text to HunterLab 62.1905, 12.0899, 19.3910 is called "color". The color property can be set on classes, ids or directly on the HTML element.

This example shows how text in the color `rgb(210, 155, 127)` looks like.

```
.text, #text, p{  
    color:rgb(210, 155, 127)  
}
```

If you want to add a text shadow in that color use the text-shadow property, you can generate a text shadow directly with our [CSS Text Shadow Generator](#).

Here you see how black text with a 4 pixel rgb(210, 155, 127) colored shadow looks like.

```
.shadow{ text-shadow: 4px 4px 2px rgb(210, 155, 127) }
```

## Border

The CSS property to change the border of an element to HunterLab 62.1905, 12.0899, 19.3910 is called "border". The border property can be set on classes, ids or directly on the HTML element.

This example shows the color as border, it can be applied via the CSS property "border" or "border-color".

```
.border, #border, table{ border:4px solid rgb(210, 155, 127) }
```



If only the border color should be changed use the property `border-color`.

```
.border{ border-color:rgb(210, 155, 127) }
```

If you want to add a box shadow in that color use:

Here you see how a box with a 4 pixel `rgb(210, 155, 127)` colored shadow looks like.

```
.boxshadow{ -moz-box-shadow:4px 4px 4px  
4px rgb(210, 155, 127); -webkit-box-  
shadow:4px 4px 4px 4px rgb(210, 155, 127);  
box-shadow:4px 4px 4px 4px rgb(210, 155,  
127) }
```

# Background

The CSS property to change the background color of an element to HunterLab 62.1905, 12.0899, 19.3910 is called "background". The background property can be set on classes, ids or directly on the HTML element.

```
.background, #background, body{  
background: rgb(210, 155, 127) }
```

If only the background color should be changed can be used:

```
.background{ background-color: rgb(210,  
155, 127) }
```

This example shows the color as background, it is applied via the CSS property "background".

To optimize and compress your CSS code, you can use our [online CSS compressor and optimizer](#) based on csstidy. If you want to create a linear or radial gradient as background or border, check our [CSS Gradient Generator](#).

Hey! You found this booklet interesting? Support Converting Colors with the new Membership Option!

The pro membership hides all ads, plus gives you double the colors in the color bucket, and more awesome pro features!

**[Learn more, Memberships starting at \\$2.50/m!](#)**

**Follow me  
on Twitter!**

@ConvertingColor