

Converting Colors

HunterLab(62.2039, 6.5445,
8.8847)

Have a look what the booklet for
HunterLab(62.2039, 6.5445, 8.8847)
contains.

HunterLab(62.2211, 6.5119, 8.9048)	3
<i>Conversions</i>	4
<i>Details</i>	6
<i>Harmonies</i>	12
<i>Previews</i>	24
<i>Color Blindness Simulation</i>	28
<i>CSS Examples</i>	31

Color

**HunterLab(62.2211, 6.5119,
8.9048)**

Conversions

Conversions Part 1

Format	Color
Hex	C0A09B
RGB	192, 160, 155
RGB Percent	75%, 63%, 61%
CMY	0.2471, 0.3725, 0.3922
CMYK	0.00, 0.17, 0.19, 0.25
HSL	8°, 23%, 68%
HSV	8°, 19%, 75%
XYZ	40.2254, 38.7147, 36.3629
YIQ	168.9980, 20.6770, 5.2290

Conversions

Conversions Part 2

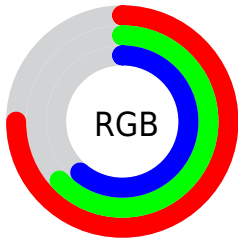
Format	Color
RYB	192, 161, 155
Decimal	12624027
CIELab	68.55, 10.98, 7.01
CIELCh	69, 13.026, 32.543
Yxy	38.7164, 0.3489, 0.3358
Android (android.graphics.Color)	4290814107 (0xFFC0A09B)
YUV	168.9980, -6.9010, 20.1728
Hunter-Lab	62.2211, 6.5119, 8.9048

Details

The HunterLab color **62.2211, 6.5119, 8.9048** is a light color, and the websafe version is hex **CC9999**. A complement of this color would be **68.0543, -12.0752, -1.7238**, and the grayscale version is **63.0104, -3.3621, 3.4235**.

A 20% lighter version of the original color is **85.6411, 6.1904, 11.1190**, and **41.3858, 6.6872, 6.8563** is the 20% darker color. If you saturate the color by 10%, you get **57.2224, 12.3184, 11.4184**, and if you desaturate by 10%, it is **67.4983, 0.9945, 6.3444**.

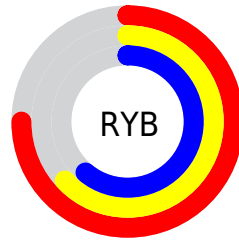
Distribution



Red (75%)

Green (63%)

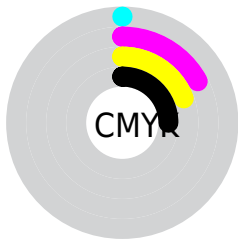
Blue (61%)



Red (75%)

Yellow (63%)

Blue (61%)

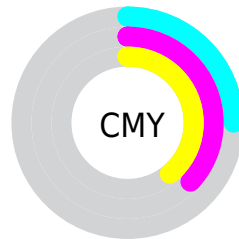


Cyan (0%)

Magenta (17%)

Yellow (19%)

Black (25%)



Cyan (25%)

Magenta (37%)

Yellow (39%)

Brightness & Saturation Gradients

These gradients show how the HunterLab color 62.2211, 6.5119, 8.9048 changes by changing the brightness by 10 percent. The first figure shows a shift by +10% for each color and the second figure -10%.

Similar to the brightness gradients but the following saturation gradients show a change of the HunterLab color 62.2211, 6.5119, 8.9048 by changing the saturation by 10% instead.

■ 62.2211, 6.5119,
8.9048

■ 62.2211, 6.5119,
8.9048

184.5761, 4.0542,
18.1781

■ 51.5162, 6.5189,
7.9525

■ 85.5599, 6.3025,
10.8518

■ 41.5059, 6.4546,
7.0088

■ 98.1249, 6.1155,
11.8475

■ 32.2440, 6.3063,
6.0700

111.2511, 5.8788,
12.8597

■ 23.7967, 6.0595,
5.1282

124.9154, 5.5958,
13.8887

■ 16.2516, 5.6928,
4.1690

139.0974, 5.2695,
14.9349

■ 9.7334, 5.1740,
3.5231

153.7789, 4.9024,

0.0000, INF, NaN

15.9985

0.0000, NaN, NaN

168.9435, 4.4966,
17.0796

0.0000, NaN, NaN

■ 62.2211, 6.5119,
8.9048

■ 62.2211, 6.5119,
8.9048

■ 57.2224, 12.3184,
11.4184

■ 67.4983, 0.9945,
6.3444

■ 52.5434, 18.4209,
13.8473

■ 73.0126, -4.2477,
3.7551

■ 48.2399, 24.7809,
16.1384

■ 78.7354, -9.2449,
1.1502

■ 44.3759, 31.2986,
18.2115

■ 84.6418, -14.0273,
-1.4637

■ 41.0222, 37.7802,
19.9587

■ 90.7119, -18.6238,
-4.0833

■ 38.2497, 43.9158,
21.2538

■ 94.8401, -23.7796,
-1.1210

■ 36.1168, 49.2951,
21.9849

■ 34.6433, 53.4613,
22.2141

■ 34.5598, 53.7023,
22.2357

Harmonies

Analogous

The Analogous color harmony consists of three colors that are next to each other on the color wheel.



62.2225, 8.3944, 3.8629



62.2211, 6.5119, 8.9048



62.2225, 1.9826, 12.2049

Triad

The Triadic color harmony groups three colors that are evenly spaced from another and form a triangle on the color wheel.



62.2225, 6.5099, 8.9058



62.2225, -13.0533, 8.1503



62.2225, -2.8202, -8.3601

Complementary

The Complementary color scheme is a pair of colors which are on the opposite of each other on the color wheel.



62.2211, 6.5119, 8.9048



68.0543, -12.0752, -1.7238

Split Complementary

Split-complementary colors differ from the complementary color scheme. The scheme consists of three colors, the original color and two neighbors of the complement color.



62.2225, -8.4573, -6.9465



62.2211, 6.5119, 8.9048



62.2225, -14.2334, 2.9072

Square

The Square scheme is like the rectangle color scheme, but the four colors are evenly spaced on the color wheel.



62.2225, 6.5099, 8.9058



62.2225, -9.2966, 11.7981



62.2225, -12.5815, -2.6889



62.2225, 2.8841, -6.3919

Rectangle

The Rectangle color scheme consists of four colors that form a rectangle on the color wheel.



62.2211, 6.5119, 8.9048



62.2225, -1.8475, 13.1464



62.2225, -12.5815, -2.6889



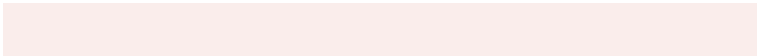
62.2225, -4.7856, -8.2647

Sweetspot

The Sweet Spot groups the original color and five complimentary colors.



62.2225, 6.5099, 8.9058



93.1817, -0.9394, 7.4368



61.8388, 14.2774, -6.7574



42.9356, -0.2181, 3.5505



98.8636, -5.2751, 5.3714



45.2661, -2.4153, 2.4594

Same Dimension

The Same Dimension uses a secret algorithm to generate beautiful new colors.



62.2225, 6.5099, 8.9058



80.9502, 11.9185, 13.3841



67.5181, -2.7266, 14.3249



32.0822, 0.4995, 3.0307



28.4677, 43.6659, 18.3061



6.5049, 7.2948, 4.1360

Inverse Universe

The Inverse Universe completely reimagines the original color for something new.



68.0543, -12.0752, -1.7238



90.4089, -18.2822, -3.8687



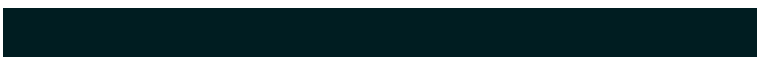
62.4418, -3.1026, -8.9302



33.4494, -3.8453, 0.5413



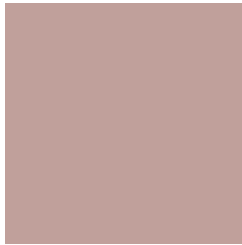
45.8305, -19.3516, -15.5097



9.8648, -4.4548, -2.7135

Previews

White Background



This preview shows how the HunterLab color 62.2211, 6.5119, 8.9048 looks on a white background.

Color Contrast Check

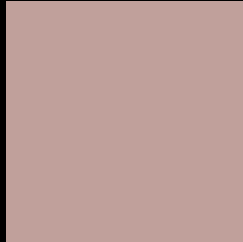
Large Text (above 18pt) WCAG AA × Fail

Any Text WCAG AA × Fail

Large Text (above 18pt) WCAG AAA × Fail

Any Text WCAG AAA × Fail

Black Background



This preview shows how the HunterLab color 62.2211, 6.5119, 8.9048 looks on a black background.

Color Contrast Check

Large Text (above 18pt) WCAG AA ✓ Pass

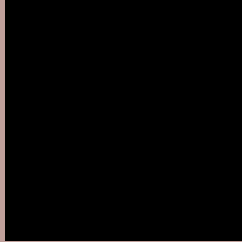
Any Text WCAG AA ✓ Pass

Large Text (above 18pt) WCAG AAA ✓ Pass

Any Text WCAG AAA ✓ Pass

If you want to check with other color combinations, try the [Color Contrast Checker](#).

HunterLab 62.2211, 6.5119, 8.9048 Background



This preview shows how black text looks on a background with the HunterLab color 62.2211, 6.5119, 8.9048.



This preview shows how white text looks on a background with the HunterLab color 62.2211, 6.5119,

Color Blindness Simulation

Color vision deficiency is a very complex topic, and I could not describe the different causes any better than Wikipedia does, so if you want to learn more, you should check out their [article about color blindness](#).

Dichromacy



Original Color

62.2211, 6.5119, 8.9048

Protanopia

62.3789, -3.0285, 7.2079

Deuteranopia

62.0868, 4.6244, 8.7251



Tritanopia

62.3100, 10.5039, 2.3920

Trichromacy



Original Color

62.2211, 6.5119, 8.9048

Protanomaly

62.1315, 0.5490, 7.4264

Deuteranomaly

62.1893, 4.9677, 8.8431

Tritanomaly

62.3300, 8.8589, 4.7015

Monochromacy



Original Color

62.2211, 6.5119, 8.9048

Achromatopsia

62.9885, -3.3609, 3.4223

Achromatomaly

62.6896, -0.1731, 5.4087

CSS Examples

Text

The CSS property to change the color of the text to HunterLab 62.2211, 6.5119, 8.9048 is called "color". The color property can be set on classes, ids or directly on the HTML element.

This example shows how text in the color `rgb(192, 160, 155)` looks like.

```
.text, #text, p{  
    color:rgb(192, 160, 155)  
}
```

If you want to add a text shadow in that color use the text-shadow property, you can generate a text shadow directly with our [CSS Text Shadow Generator](#).

Here you see how black text with a 4 pixel rgb(192, 160, 155) colored shadow looks like.

```
.shadow{ text-shadow: 4px 4px 2px rgb(192, 160, 155) }
```

Border

The CSS property to change the border of an element to HunterLab 62.2211, 6.5119, 8.9048 is called "border".

The border property can be set on classes, ids or directly on the HTML element.

This example shows the color as border, it can be applied via the CSS property "border" or "border-color".

```
.border, #border, table{ border:4px solid rgb(192, 160, 155) }
```


If only the border color should be changed use the property border-color.

```
.border{ border-color:rgb(192, 160, 155) }
```

If you want to add a box shadow in that color use:

Here you see how a box with a 4 pixel rgb(192, 160, 155) colored shadow looks like.

```
.boxshadow{ -moz-box-shadow:4px 4px 4px  
4px rgb(192, 160, 155); -webkit-box-  
shadow:4px 4px 4px 4px rgb(192, 160, 155);  
box-shadow:4px 4px 4px 4px rgb(192, 160,  
155) }
```

Background

The CSS property to change the background color of an element to HunterLab 62.2211, 6.5119, 8.9048 is called "background". The background property can be set on classes, ids or directly on the HTML element.

```
.background, #background, body{  
background: rgb(192, 160, 155) }
```

If only the background color should be changed can be used:

```
.background{ background-color: rgb(192,  
160, 155) }
```

This example shows the color as background, it is applied via the CSS property "background".

To optimize and compress your CSS code, you can use our [online CSS compressor and optimizer](#) based on csstidy. If you want to create a linear or radial gradient as background or border, check our [CSS Gradient Generator](#).

Hey! You found this booklet interesting? Support Converting Colors with the new Membership Option!

The pro membership hides all ads, plus gives you double the colors in the color bucket, and more awesome pro features!

[Learn more, Memberships starting at \\$2.50/m!](#)

**Follow me
on Twitter!**

@ConvertingColor