

Converting Colors

HunterLab(62.2119, 3.3913,
3.1206)

Have a look what the booklet for
HunterLab(62.2119, 3.3913, 3.1206)
contains.

HunterLab(62.3260, 3.2578, 3.2208)	3
<i>Conversions</i>	4
<i>Details</i>	6
<i>Harmonies</i>	12
<i>Previews</i>	24
<i>Color Blindness Simulation</i>	28
<i>CSS Examples</i>	31

Color

**HunterLab(62.3260, 3.2578,
3.2208)**

Conversions

Conversions Part 1

Format	Color
Hex	B5A3A8
RGB	181, 163, 168
RGB Percent	71%, 64%, 66%
CMY	0.2902, 0.3608, 0.3412
CMYK	0.00, 0.10, 0.07, 0.29
HSL	343°, 11%, 67%
HSV	343°, 10%, 71%
XYZ	39.2211, 38.8453, 42.4765
YIQ	168.9520, 9.1230, 5.3710

Conversions

Conversions Part 2

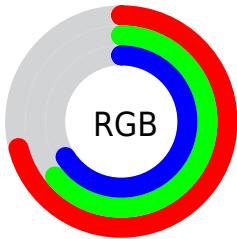
Format	Color
RYB	181, 163, 168
Decimal	11903912
CIELab	68.64, 7.42, -0.21
CIELCh	69, 7.424, 358.408
Yxy	38.8470, 0.3254, 0.3223
Android (android.graphics.Color)	4290093992 (0xFFB5A3A8)
YUV	168.9520, -0.4693, 10.5661
Hunter-Lab	62.3260, 3.2578, 3.2208

Details

The HunterLab color $62.3260, 3.2578, 3.2208$ is a light color, and the websafe version is hex 999999 . A complement of this color would be $66.3098, -9.8029, 3.9602$, and the grayscale version is $62.9691, -3.3599, 3.4212$.

A 20% lighter version of the original color is $85.7176, 2.6684, 4.5772$, and $41.4958, 3.6887, 2.0257$ is the 20% darker color. If you saturate the color by 10%, you get $56.9294, 10.3572, 2.9984$, and if you desaturate by 10%, it is $68.0099, -3.6661, 3.6966$.

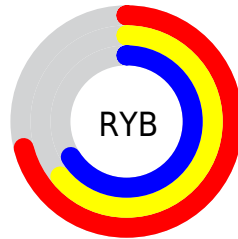
Distribution



Red (71%)

Green (64%)

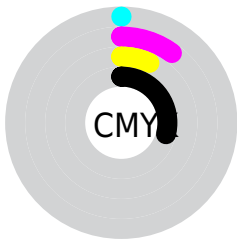
Blue (66%)



Red (71%)

Yellow (64%)

Blue (66%)

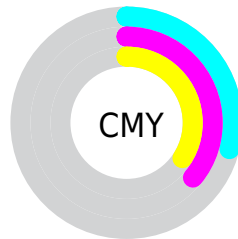


Cyan (0%)

Magenta (10%)

Yellow (7%)

Black (29%)



Cyan (29%)

Magenta (36%)

Yellow (34%)

Brightness & Saturation Gradients

These gradients show how the HunterLab color 62.3260, 3.2578, 3.2208 changes by changing the brightness by 10 percent. The first figure shows a shift by +10% for each color and the second figure -10%.

Similar to the brightness gradients but the following saturation gradients show a change of the HunterLab color 62.3260, 3.2578, 3.2208 by changing the saturation by 10% instead.

■ 62.3260, 3.2578,
3.2208

■ 62.3260, 3.2578,
3.2208

184.7267, -0.5056,
9.8100

■ 51.6147, 3.4438,
2.6491

■ 85.6764, 2.7175,
4.4737

■ 41.5976, 3.5690,
2.1149

■ 98.2469, 2.3758,
5.1491

■ 32.3283, 3.6231,
1.6224

111.3783, 1.9905,
5.8555

■ 23.8728, 3.5943,
1.1753

125.0477, 1.5643,
6.5914

■ 16.3187, 3.4652,
0.7788

139.2345, 1.0997,
7.3558

■ 9.7900, 3.2077,
0.4404

153.9207, 0.5986,

0.0000, INF, NaN

8.1476

0.0000, NaN, NaN

169.0897, 0.0630,
8.9660

0.0000, NaN, NaN

■ 62.3260, 3.2578,
3.2208

■ 62.3260, 3.2578,
3.2208

■ 56.9294, 10.3572,
2.9984

■ 68.0099, -3.6661,
3.6966

■ 51.8658, 17.6160,
3.0801

■ 73.9369, -10.4138,
4.3782

■ 47.1987, 24.9630,
3.5286

■ 80.0767, -17.0031,
5.2306

■ 43.0030, 32.2471,
4.4066

■ 86.4036, -23.4547,
6.2254

■ 39.3648, 39.1959,
5.7625

■ 92.8968, -29.7897,
7.3400

■ 36.3738, 45.3917,
7.6030

■ 93.8218, -28.1186,
1.9935

■ 34.1066, 50.3112,
9.8586

■ 94.1084, -26.4806,
-2.0791

■ 32.5984, 53.4776,
12.3619

■ 31.7163, 55.0321,
14.7958

Harmonies

Analogous

The Analogous color harmony consists of three colors that are next to each other on the color wheel.



62.3274, 2.2656, 0.0892



62.3260, 3.2578, 3.2208



62.3274, 2.4513, 6.2440

Triad

The Triadic color harmony groups three colors that are evenly spaced from another and form a triangle on the color wheel.



62.3274, 3.2561, 3.2219



62.3274, -6.3705, 8.5559



62.3274, -6.6748, -2.0681

Complementary

The Complementary color scheme is a pair of colors which are on the opposite of each other on the color wheel.



62.3260, 3.2578, 3.2208



66.3098, -9.8029, 3.9602

Split Complementary

Split-complementary colors differ from the complementary color scheme. The scheme consists of three colors, the original color and two neighbors of the complement color.



62.3274, -8.9060, 0.3998



62.3260, 3.2578, 3.2208



62.3274, -8.7329, 6.5246

Square

The Square scheme is like the rectangle color scheme, but the four colors are evenly spaced on the color wheel.



62.3274, 3.2561, 3.2219



62.3274, -3.1496, 9.2243



62.3274, -9.6515, 3.5630



62.3274, -3.5082, -3.0633

Rectangle

The Rectangle color scheme consists of four colors that form a rectangle on the color wheel.



62.3260, 3.2578, 3.2208



62.3274, 1.0144, 7.8128



62.3274, -9.6515, 3.5630



62.3274, -7.5565, -1.3770

Sweetspot

The Sweet Spot groups the original color and five complimentary colors.



62.3274, 3.2561, 3.2219



88.6151, -2.0535, 4.7175



62.2502, 3.8133, -3.2127



40.9128, -0.6117, 2.1678



95.4677, -5.0939, 5.1869



42.2927, -2.2566, 2.2978

Same Dimension

The Same Dimension uses a secret algorithm to generate beautiful new colors.



62.3274, 3.2561, 3.2219



81.7443, 6.4824, 4.2124



63.3013, 0.5183, 6.5585



29.2280, 1.3121, 1.5132



26.3494, 45.7718, 12.0067



4.7812, 8.5125, 0.5740

Inverse Universe

The Inverse Universe completely reimagines the original color for something new.



62.3274, 3.2561, 3.2219



81.7443, 6.4824, 4.2124



65.2746, -7.0670, 0.3897



29.2280, 1.3121, 1.5132



26.3494, 45.7718, 12.0067



4.7812, 8.5125, 0.5740

Previews

White Background



This preview shows how the HunterLab color 62.3260, 3.2578, 3.2208 looks on a white background.

Color Contrast Check

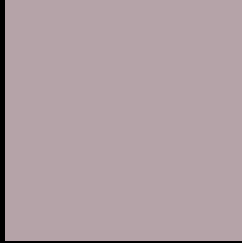
Large Text (above 18pt) WCAG AA × Fail

Any Text WCAG AA × Fail

Large Text (above 18pt) WCAG AAA × Fail

Any Text WCAG AAA × Fail

Black Background



This preview shows how the HunterLab color 62.3260, 3.2578, 3.2208 looks on a black background.

Color Contrast Check

Large Text (above 18pt) WCAG AA ✓ Pass

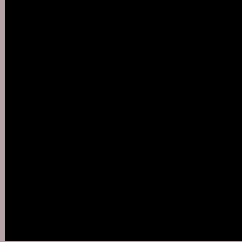
Any Text WCAG AA ✓ Pass

Large Text (above 18pt) WCAG AAA ✓ Pass

Any Text WCAG AAA ✓ Pass

If you want to check with other color combinations, try the [Color Contrast Checker](#).

HunterLab 62.3260, 3.2578, 3.2208 Background



This preview shows how black text looks on a background with the HunterLab color 62.3260, 3.2578, 3.2208.



This preview shows how white text looks on a background with the HunterLab color 62.3260, 3.2578,

Color Blindness Simulation

Color vision deficiency is a very complex topic, and I could not describe the different causes any better than Wikipedia does, so if you want to learn more, you should check out their [article about color blindness](#).

Dichromacy



Original Color

62.3260, 3.2578, 3.2208

Protanopia

62.5186, -1.9055, 2.4241

Deuteranopia

62.2375, 4.4199, 3.1365



Tritanopia

62.3545, 5.2418, -0.0498

Trichromacy



Original Color

62.3260, 3.2578, 3.2208

Protanomaly

62.5585, -0.3284, 2.9676

Deuteranomaly

62.1393, 4.0901, 3.0144

Tritanomaly

62.2610, 4.7417, 1.2806

Monochromacy



Original Color

62.3260, 3.2578, 3.2208

Achromatopsia

62.9885, -3.3609, 3.4223

Achromatomaly

62.7585, -1.1384, 3.1899

CSS Examples

Text

The CSS property to change the color of the text to HunterLab 62.3260, 3.2578, 3.2208 is called "color". The color property can be set on classes, ids or directly on the HTML element.

This example shows how text in the color `rgb(181, 163, 168)` looks like.

```
.text, #text, p{  
    color:rgb(181, 163, 168)  
}
```

If you want to add a text shadow in that color use the text-shadow property, you can generate a text shadow directly with our [CSS Text Shadow Generator](#).

Here you see how black text with a 4 pixel rgb(181, 163, 168) colored shadow looks like.

```
.shadow{ text-shadow: 4px 4px 2px rgb(181, 163, 168) }
```

Border

The CSS property to change the border of an element to HunterLab 62.3260, 3.2578, 3.2208 is called "border".

The border property can be set on classes, ids or directly on the HTML element.

This example shows the color as border, it can be applied via the CSS property "border" or "border-color".

```
.border, #border, table{ border:4px solid rgb(181, 163, 168) }
```


If only the border color should be changed use the property `border-color`.

```
.border{ border-color:rgb(181, 163, 168) }
```

If you want to add a box shadow in that color use:

Here you see how a box with a 4 pixel `rgb(181, 163, 168)` colored shadow looks like.

```
.boxshadow{ -moz-box-shadow:4px 4px 4px  
4px rgb(181, 163, 168); -webkit-box-  
shadow:4px 4px 4px 4px rgb(181, 163, 168);  
box-shadow:4px 4px 4px 4px rgb(181, 163,  
168) }
```

Background

The CSS property to change the background color of an element to HunterLab 62.3260, 3.2578, 3.2208 is called "background". The background property can be set on classes, ids or directly on the HTML element.

```
.background, #background, body{  
background: rgb(181, 163, 168) }
```

If only the background color should be changed can be used:

```
.background{ background-color: rgb(181,  
163, 168) }
```

This example shows the color as background, it is applied via the CSS property "background".

To optimize and compress your CSS code, you can use our [online CSS compressor and optimizer](#) based on csstidy. If you want to create a linear or radial gradient as background or border, check our [CSS Gradient Generator](#).

Hey! You found this booklet interesting? Support Converting Colors with the new Membership Option!

The pro membership hides all ads, plus gives you double the colors in the color bucket, and more awesome pro features!

[Learn more, Memberships starting at \\$2.50/m!](#)

**Follow me
on Twitter!**

@ConvertingColor