

Converting Colors

HunterLab(62.2829, 20.3145,
9.3667)

Have a look what the booklet for
HunterLab(62.2829, 20.3145,
9.3667) contains.

HunterLab(62.2721, 20.4201, 9.2040)	3
<i>Conversions</i>	4
<i>Details</i>	6
<i>Harmonies</i>	12
<i>Previews</i>	24
<i>Color Blindness Simulation</i>	28
<i>CSS Examples</i>	31

Color

**HunterLab(62.2721, 20.4201,
9.2040)**

Conversions

Conversions Part 1

Format	Color
Hex	D8969B
RGB	216, 150, 155
RGB Percent	85%, 59%, 61%
CMY	0.1529, 0.4117, 0.3922
CMYK	0.00, 0.31, 0.28, 0.15
HSL	355°, 46%, 72%
HSV	355°, 31%, 85%
XYZ	45.1416, 38.7781, 36.1160
YIQ	170.3040, 37.7310, 15.5470

Conversions

Conversions Part 2

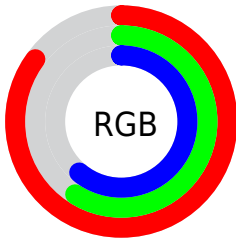
Format	Color
R _Y B	216, 150, 155
Decimal	14194331
CIE Lab	68.59, 25.49, 7.40
CIE LCh	69, 26.543, 16.192
Yxy	38.7800, 0.3761, 0.3231
Android (android.graphics.Color)	4292384411 (0xFFD8969B)
YUV	170.3040, -7.5449, 40.0754
Hunter-Lab	62.2721, 20.4201, 9.2040

Details

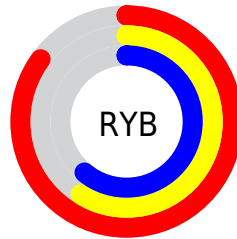
The HunterLab color **62.2721, 20.4201, 9.2040** is a light color, and the websafe version is hex **CC9999**. A complement of this color would be **77.6529, -23.5027, 0.3810**, and the grayscale version is **63.5478, -3.3908, 3.4527**.

A 20% lighter version of the original color is **83.3823, 13.7374, 8.7279**, and **41.4830, 19.3314, 7.1815** is the 20% darker color. If you saturate the color by 10%, you get **56.4744, 29.0744, 11.2298**, and if you desaturate by 10%, it is **68.5914, 11.9857, 7.4331**.

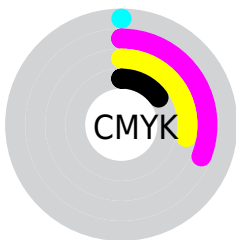
Distribution



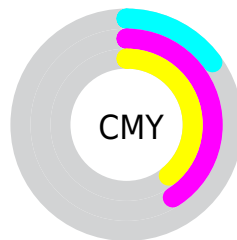
- Red (85%)
- Green (59%)
- Blue (61%)



- Red (85%)
- Yellow (59%)
- Blue (61%)



- Cyan (0%)
- Magenta (31%)
- Yellow (28%)
- Black (15%)



- Cyan (15%)
- Magenta (41%)
- Yellow (39%)

Brightness & Saturation Gradients

These gradients show how the HunterLab color 62.2721, 20.4201, 9.2040 changes by changing the brightness by 10 percent. The first figure shows a shift by +10% for each color and the second figure -10%.

Similar to the brightness gradients but the following saturation gradients show a change of the HunterLab color 62.2721, 20.4201, 9.2040 by changing the saturation by 10% instead.

62.2721, 20.4201,
9.2040

62.2721, 20.4201,
9.2040

184.6494, 23.0618,
18.6299

51.5641, 19.7466,
8.2299

85.6166, 21.4855,
11.1908

41.5506, 18.9702,
7.2626

98.1843, 21.8997,
12.2048

32.2851, 18.0743,
6.2979

111.3131, 22.2430,
13.2343

23.8338, 17.0429,
5.3272

124.9798, 22.5209,
14.2799

16.2843, 15.8604,
4.3348

139.1642, 22.7379,
15.3421

9.7610, 14.5293,
3.6854

153.8480, 22.8982,

0.0000, INF, NaN

16.4211

0.0000, NaN, NaN

169.0147, 23.0051,
17.5170

0.0000, NaN, NaN

■ 62.2721, 20.4201,
9.2040

■ 62.2721, 20.4201,
9.2040

■ 56.4744, 29.0744,
11.2298

■ 68.5914, 11.9857,
7.4331

■ 51.2964, 37.7823,
13.4981

■ 75.3438, 3.8455,
5.8972

■ 46.8578, 46.2007,
15.9514

■ 82.4632, -3.9962,
4.5702

■ 43.2797, 53.7853,
18.4566

■ 89.8965, -11.5614,
3.4231

■ 40.6605, 59.8459,
20.7998

■ 96.6063, -17.3626,
1.2511

■ 39.0337, 63.7715,
22.7285

■ 96.6121, -17.3301,
1.1686

■ 38.2589, 65.6201,
23.9426

Harmonies

Analogous

The Analogous color harmony consists of three colors that are next to each other on the color wheel.



62.2736, 20.7021, -2.0797



62.2721, 20.4201, 9.2040



62.2736, 13.4649, 17.2405

Triad

The Triadic color harmony groups three colors that are evenly spaced from another and form a triangle on the color wheel.



62.2736, 20.4175, 9.2051



62.2736, -19.1181, 16.7502



62.2736, -8.7379, -21.9143

Complementary

The Complementary color scheme is a pair of colors which are on the opposite of each other on the color wheel.



62.2721, 20.4201, 9.2040



77.6529, -23.5027, 0.3810

Split Complementary

Split-complementary colors differ from the complementary color scheme. The scheme consists of three colors, the original color and two neighbors of the complement color.



62.2736, -18.5073, -14.6218



62.2721, 20.4201, 9.2040



62.2736, -24.1863, 8.4041

Square

The Square scheme is like the rectangle color scheme, but the four colors are evenly spaced on the color wheel.



62.2736, 20.4175, 9.2051



62.2736, -9.6307, 20.9990



62.2736, -23.9715, -3.0469



62.2736, 3.2397, -21.5876

Rectangle

The Rectangle color scheme consists of four colors that form a rectangle on the color wheel.



62.2721, 20.4201, 9.2040



62.2736, 6.2645, 20.3131



62.2736, -23.9715, -3.0469



62.2736, -12.3693, -20.2211

Sweetspot

The Sweet Spot groups the original color and five complimentary colors.



62.2736, 20.4175, 9.2051



92.1573, 3.2289, 6.8664



63.6770, 28.7905, -20.7487



42.0645, 2.1471, 3.2924

0.0000, NaN, NaN



46.2646, -2.4686, 2.5136

Same Dimension

The Same Dimension uses a secret algorithm to generate beautiful new colors.



62.2736, 20.4175, 9.2051



70.3185, 31.7176, 12.7352



69.6022, 5.5175, 18.4040



35.2646, 1.3614, 2.6570



29.4448, 50.5233, 18.2661



7.2690, 12.5473, 3.9302

Inverse Universe

The Inverse Universe completely reimagines the original color for something new.



62.2736, 20.4175, 9.2051



70.3185, 31.7176, 12.7352



69.0101, -9.3789, -13.4560



35.2646, 1.3614, 2.6570



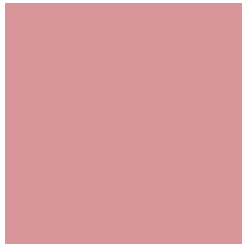
29.4448, 50.5233, 18.2661



7.2690, 12.5473, 3.9302

Previews

White Background



This preview shows how the HunterLab color 62.2721, 20.4201, 9.2040 looks on a white background.

Color Contrast Check

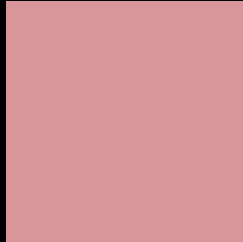
Large Text (above 18pt) WCAG AA × Fail

Any Text WCAG AA × Fail

Large Text (above 18pt) WCAG AAA × Fail

Any Text WCAG AAA × Fail

Black Background



This preview shows how the HunterLab color 62.2721, 20.4201, 9.2040 looks on a black background.

Color Contrast Check

Large Text (above 18pt) WCAG AA ✓ Pass

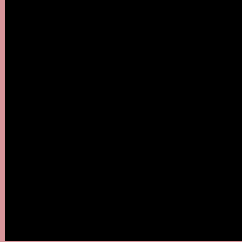
Any Text WCAG AA ✓ Pass

Large Text (above 18pt) WCAG AAA ✓ Pass

Any Text WCAG AAA ✓ Pass

If you want to check with other color combinations, try the [Color Contrast Checker](#).

HunterLab 62.2721, 20.4201, 9.2040 Background



This preview shows how black text looks on a background with the HunterLab color 62.2721, 20.4201, 9.2040.



This preview shows how white text looks on a background with the HunterLab color 62.2721, 20.4201, 9.2040.

Color Blindness Simulation

Color vision deficiency is a very complex topic, and I could not describe the different causes any better than Wikipedia does, so if you want to learn more, you should check out their [article about color blindness](#).

Dichromacy



Original Color

62.2721, 20.4201, 9.2040

Protanopia

62.4305, -2.5656, 5.0693

Deuteranopia

62.4175, 4.1778, 9.9075



Tritanopia

62.2773, 22.0231, 7.0982

Trichromacy



Original Color

62.2721, 20.4201, 9.2040

Protanomaly

62.1512, 5.1727, 6.2219

Deuteranomaly

62.3931, 9.8620, 9.5676

Tritanomaly

62.2216, 21.7401, 7.8975

Monochromacy



Original Color

62.2721, 20.4201, 9.2040

Achromatopsia

63.4017, -3.3830, 3.4447

Achromatomaly

62.8298, 4.7743, 5.2072

CSS Examples

Text

The CSS property to change the color of the text to HunterLab 62.2721, 20.4201, 9.2040 is called "color". The color property can be set on classes, ids or directly on the HTML element.

This example shows how text in the color `rgb(216, 150, 155)` looks like.

```
.text, #text, p{  
    color:rgb(216, 150, 155)  
}
```

If you want to add a text shadow in that color use the text-shadow property, you can generate a text shadow directly with our [CSS Text Shadow Generator](#).

Here you see how black text with a 4 pixel rgb(216, 150, 155) colored shadow looks like.

```
.shadow{ text-shadow: 4px 4px 2px rgb(216, 150, 155) }
```

Border

The CSS property to change the border of an element to HunterLab 62.2721, 20.4201, 9.2040 is called "border". The border property can be set on classes, ids or directly on the HTML element.

This example shows the color as border, it can be applied via the CSS property "border" or "border-color".

```
.border, #border, table{ border:4px solid rgb(216, 150, 155) }
```


If only the border color should be changed use the property `border-color`.

```
.border{ border-color:rgb(216, 150, 155) }
```

If you want to add a box shadow in that color use:

Here you see how a box with a 4 pixel `rgb(216, 150, 155)` colored shadow looks like.

```
.boxshadow{ -moz-box-shadow:4px 4px 4px  
4px rgb(216, 150, 155); -webkit-box-  
shadow:4px 4px 4px 4px rgb(216, 150, 155);  
box-shadow:4px 4px 4px 4px rgb(216, 150,  
155) }
```

Background

The CSS property to change the background color of an element to HunterLab 62.2721, 20.4201, 9.2040 is called "background". The background property can be set on classes, ids or directly on the HTML element.

```
.background, #background, body{  
background: rgb(216, 150, 155) }
```

If only the background color should be changed can be used:

```
.background{ background-color: rgb(216,  
150, 155) }
```

This example shows the color as background, it is applied via the CSS property "background".

To optimize and compress your CSS code, you can use our [online CSS compressor and optimizer](#) based on csstidy. If you want to create a linear or radial gradient as background or border, check our [CSS Gradient Generator](#).

Hey! You found this booklet interesting? Support Converting Colors with the new Membership Option!

The pro membership hides all ads, plus gives you double the colors in the color bucket, and more awesome pro features!

[Learn more, Memberships starting at \\$2.50/m!](#)

**Follow me
on Twitter!**

@ConvertingColor