

Converting Colors

HunterLab(62.2938, 4.2675,
18.1624)

Have a look what the booklet for
HunterLab(62.2938, 4.2675,
18.1624) contains.

HunterLab(62.3412, 4.3075, 18.0679)	3
<i>Conversions</i>	4
<i>Details</i>	6
<i>Harmonies</i>	12
<i>Previews</i>	24
<i>Color Blindness Simulation</i>	28
<i>CSS Examples</i>	31

Color

**HunterLab(62.3412, 4.3075,
18.0679)**

Conversions

Conversions Part 1

Format	Color
Hex	C4A183
RGB	196, 161, 131
RGB Percent	77%, 63%, 51%
CMY	0.2314, 0.3686, 0.4863
CMYK	0.00, 0.18, 0.33, 0.23
HSL	28°, 36%, 64%
HSV	28°, 33%, 77%
XYZ	39.6066, 38.8643, 26.8869
YIQ	168.0450, 30.4900, -1.9100

Conversions

Conversions Part 2

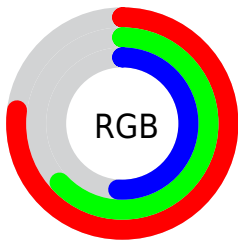
Format	Color
R_{YB}	196, 187, 131
Decimal	12886403
CIE Lab	68.65, 8.58, 20.48
CIE LCh	69, 22.203, 67.276
Yxy	38.8661, 0.3759, 0.3689
Android (android.graphics.Color)	4291076483 (0xFFC4A183)
YUV	168.0450, -18.2632, 24.5165
Hunter-Lab	62.3412, 4.3075, 18.0679

Details

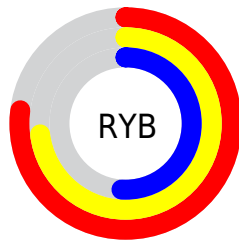
The HunterLab color $62.3412, 4.3075, 18.0679$ is a light color, and the websafe version is hex $CC9966$. A complement of this color would be $60.0684, -7.1762, -14.6596$, and the grayscale version is $62.6596, -3.3434, 3.4044$.

A 20% lighter version of the original color is $85.8156, 3.9133, 21.6172$, and $41.4657, 4.6552, 14.5017$ is the 20% darker color. If you saturate the color by 10%, you get $59.0337, 7.4645, 21.2860$, and if you desaturate by 10%, it is $65.7983, 1.4698, 14.3408$.

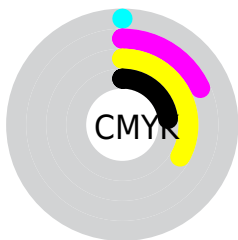
Distribution



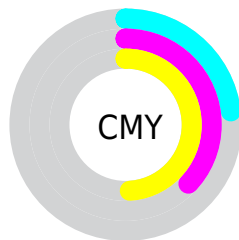
- Red (77%)
- Green (63%)
- Blue (51%)



- Red (77%)
- Yellow (73%)
- Blue (51%)



- Cyan (0%)
- Magenta (18%)
- Yellow (33%)
- Black (23%)



- Cyan (23%)
- Magenta (37%)
- Yellow (49%)

Brightness & Saturation Gradients

These gradients show how the HunterLab color 62.3412, 4.3075, 18.0679 changes by changing the brightness by 10 percent. The first figure shows a shift by +10% for each color and the second figure -10%.

Similar to the brightness gradients but the following saturation gradients show a change of the HunterLab color 62.3412, 4.3075, 18.0679 by changing the saturation by 10% instead.

■ 62.3412, 4.3075,
18.0679

■ 62.3412, 4.3075,
18.0679

184.7487, 0.9677,
32.7727

■ 51.6290, 4.4347,
16.3224

■ 85.6934, 3.8744,
21.4439

■ 41.6109, 4.4982,
14.5169

■ 98.2647, 3.5829,
23.0926

■ 32.3406, 4.4862,
12.6286

■ 111.3969, 3.2458,
24.7246

■ 23.8839, 4.3861,
10.6215

125.0669, 2.8662,
26.3447

■ 16.3285, 4.1790,
8.4641

139.2545, 2.4465,
27.9568

■ 9.7982, 3.8352,
6.8588

153.9414, 1.9889,

0.0000, INF, NaN

29.5639

0.0000, NaN, NaN

169.1110, 1.4955,
31.1685

0.0000, NaN, NaN

■ 62.3412, 4.3075,
18.0679

■ 62.3412, 4.3075,
18.0679

■ 59.0337, 7.4645,
21.2860

■ 65.7983, 1.4698,
14.3408

■ 55.8856, 10.9619,
23.9345

■ 69.3879, -1.0609,
10.1566

■ 52.9136, 14.8022,
25.9558

■ 73.0999, -3.3087,
5.5659

■ 50.1338, 18.9762,
27.2977

■ 76.9239, -5.2961,
0.6126

■ 47.5625, 23.4536,
27.9246

■ 80.8510, -7.0452,
-4.6647

■ 45.2142, 28.1741,
27.8367

■ 84.8731, -8.5770,
-10.2324

■ 43.7360, 31.4586,
27.5007

■ 88.4872, -12.6634,
-9.0873

■ 91.9340, -17.9890,
-4.6800

■ 95.1188, -22.7571,
-0.7581

Harmonies

Analogous

The Analogous color harmony consists of three colors that are next to each other on the color wheel.



62.3426, 12.7896, 13.5241



62.3412, 4.3075, 18.0679



62.3426, -5.7564, 19.0015

Triad

The Triadic color harmony groups three colors that are evenly spaced from another and form a triangle on the color wheel.



62.3426, 4.3052, 18.0688



62.3426, -21.3492, 1.0221



62.3426, 8.8003, -13.0619

Complementary

The Complementary color scheme is a pair of colors which are on the opposite of each other on the color wheel.



62.3412, 4.3075, 18.0679



60.0684, -7.1762, -14.6596

Split Complementary

Split-complementary colors differ from the complementary color scheme. The scheme consists of three colors, the original color and two neighbors of the complement color.



62.3426, -0.8655, -17.7128



62.3412, 4.3075, 18.0679



62.3426, -17.9615, -8.7869

Square

The Square scheme is like the rectangle color scheme, but the four colors are evenly spaced on the color wheel.



62.3426, 4.3052, 18.0688



62.3426, -20.1579, 10.0796



62.3426, -10.6142, -16.0359



62.3426, 15.4974, -4.1265

Rectangle

The Rectangle color scheme consists of four colors that form a rectangle on the color wheel.



62.3412, 4.3075, 18.0679



62.3426, -11.9337, 17.6103



62.3426, -10.6142, -16.0359



62.3426, 5.7676, -15.2377

Sweetspot

The Sweet Spot groups the original color and five complimentary colors.



62.3426, 4.3052, 18.0688



94.8769, -2.3759, 11.8678



55.4524, 24.7438, -4.3577



43.5673, -0.8929, 5.8894

0.0000, NaN, NaN



46.2646, -2.4686, 2.5136

Same Dimension

The Same Dimension uses a secret algorithm to generate beautiful new colors.



62.3426, 4.3052, 18.0688



80.5650, 8.9265, 27.6214



71.6967, -11.2521, 26.2247



32.9043, -0.9053, 3.9311



35.2976, 24.6367, 22.1815



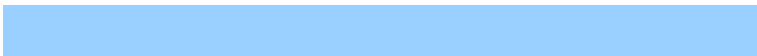
8.2223, 3.1333, 5.1214

Inverse Universe

The Inverse Universe completely reimagines the original color for something new.



60.0684, -7.1762, -14.6596



76.8527, -9.7152, -25.8014



50.9223, 8.6292, -29.2772



32.5976, -2.4660, -0.4820



30.4886, 3.8421, -46.4021



7.3372, -0.9079, -7.2109

Previews

White Background



This preview shows how the HunterLab color 62.3412, 4.3075, 18.0679 looks on a white background.

Color Contrast Check

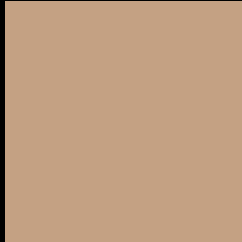
Large Text (above 18pt) WCAG AA × Fail

Any Text WCAG AA × Fail

Large Text (above 18pt) WCAG AAA × Fail

Any Text WCAG AAA × Fail

Black Background



This preview shows how the HunterLab color 62.3412, 4.3075, 18.0679 looks on a black background.

Color Contrast Check

Large Text (above 18pt) WCAG AA ✓ Pass

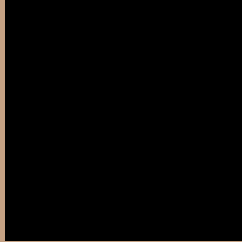
Any Text WCAG AA ✓ Pass

Large Text (above 18pt) WCAG AAA ✓ Pass

Any Text WCAG AAA ✓ Pass

If you want to check with other color combinations, try the [Color Contrast Checker](#).

HunterLab 62.3412, 4.3075, 18.0679 Background



This preview shows how black text looks on a background with the HunterLab color 62.3412, 4.3075, 18.0679.



This preview shows how white text looks on a background with the HunterLab color 62.3412, 4.3075,

Color Blindness Simulation

Color vision deficiency is a very complex topic, and I could not describe the different causes any better than Wikipedia does, so if you want to learn more, you should check out their [article about color blindness](#).

Dichromacy



Original Color

62.3412, 4.3075, 18.0679

Protanopia

62.3086, -4.5278, 16.8534

Deuteranopia

62.3412, 4.3075, 18.0679



Tritanopia

62.3566, 13.3245, 3.4332

Trichromacy



Original Color

62.3412, 4.3075, 18.0679

Protanomaly

62.3843, -1.3121, 17.3283

Deuteranomaly

62.3412, 4.3075, 18.0679

Tritanomaly

62.4199, 10.0032, 9.1825

Monochromacy



Original Color

62.3412, 4.3075, 18.0679

Achromatopsia

62.5758, -3.3389, 3.3999

Achromatomaly

62.2429, -0.7185, 8.8021

CSS Examples

Text

The CSS property to change the color of the text to HunterLab 62.3412, 4.3075, 18.0679 is called "color". The color property can be set on classes, ids or directly on the HTML element.

This example shows how text in the color `rgb(196, 161, 131)` looks like.

```
.text, #text, p{  
    color:rgb(196, 161, 131)  
}
```

If you want to add a text shadow in that color use the text-shadow property, you can generate a text shadow directly with our [CSS Text Shadow Generator](#).

Here you see how black text with a 4 pixel rgb(196, 161, 131) colored shadow looks like.

```
.shadow{ text-shadow: 4px 4px 2px rgb(196, 161, 131) }
```

Border

The CSS property to change the border of an element to HunterLab 62.3412, 4.3075, 18.0679 is called "border". The border property can be set on classes, ids or directly on the HTML element.

This example shows the color as border, it can be applied via the CSS property "border" or "border-color".

```
.border, #border, table{ border:4px solid rgb(196, 161, 131) }
```


If only the border color should be changed use the property `border-color`.

```
.border{ border-color:rgb(196, 161, 131) }
```

If you want to add a box shadow in that color use:

Here you see how a box with a 4 pixel `rgb(196, 161, 131)` colored shadow looks like.

```
.boxshadow{ -moz-box-shadow:4px 4px 4px  
4px rgb(196, 161, 131); -webkit-box-  
shadow:4px 4px 4px 4px rgb(196, 161, 131);  
box-shadow:4px 4px 4px 4px rgb(196, 161,  
131) }
```

Background

The CSS property to change the background color of an element to HunterLab 62.3412, 4.3075, 18.0679 is called "background". The background property can be set on classes, ids or directly on the HTML element.

```
.background, #background, body{  
background: rgb(196, 161, 131) }
```

If only the background color should be changed can be used:

```
.background{ background-color: rgb(196,  
161, 131) }
```

This example shows the color as background, it is applied via the CSS property "background".

To optimize and compress your CSS code, you can use our [online CSS compressor and optimizer](#) based on csstidy. If you want to create a linear or radial gradient as background or border, check our [CSS Gradient Generator](#).

Hey! You found this booklet interesting? Support Converting Colors with the new Membership Option!

The pro membership hides all ads, plus gives you double the colors in the color bucket, and more awesome pro features!

[Learn more, Memberships starting at \\$2.50/m!](#)

**Follow me
on Twitter!**

@ConvertingColor