

Converting Colors

HunterLab(62.3092, 14.4951,
11.5919)

Have a look what the booklet for
HunterLab(62.3092, 14.4951,
11.5919) contains.

HunterLab(62.2021, 14.5219, 11.4803)	3
<i>Conversions</i>	4
<i>Details</i>	6
<i>Harmonies</i>	12
<i>Previews</i>	24
<i>Color Blindness Simulation</i>	28
<i>CSS Examples</i>	31

Color

**HunterLab(62.2021, 14.5219,
11.4803)**

Conversions

Conversions Part 1

Format	Color
Hex	D09A95
RGB	208, 154, 149
RGB Percent	82%, 60%, 58%
CMY	0.1843, 0.3961, 0.4157
CMYK	0.00, 0.26, 0.28, 0.18
HSL	5°, 39%, 70%
HSV	5°, 28%, 82%
XYZ	42.9928, 38.6910, 33.6359
YIQ	169.5760, 33.7890, 9.8930

Conversions

Conversions Part 2

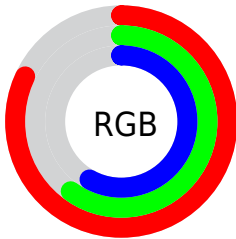
Format	Color
R _Y B	208, 154, 149
Decimal	13671061
CIE Lab	68.53, 19.47, 10.54
CIE LCh	69, 22.141, 28.418
Yxy	38.6928, 0.3728, 0.3355
Android (android.graphics.Color)	4291861141 (0xFFD09A95)
YUV	169.5760, -10.1440, 33.6978
Hunter-Lab	62.2021, 14.5219, 11.4803

Details

The HunterLab color **62.2021, 14.5219, 11.4803** is a light color, and the websafe version is hex **CC9999**. A complement of this color would be **73.2487, -18.1961, -3.4857**, and the grayscale version is **63.2584, -3.3753, 3.4369**.

A 20% lighter version of the original color is **84.3639, 10.6697, 12.4640**, and **41.5424, 13.2531, 9.3384** is the 20% darker color. If you saturate the color by 10%, you get **56.8271, 21.7421, 14.0175**, and if you desaturate by 10%, it is **67.9762, 7.6133, 8.9352**.

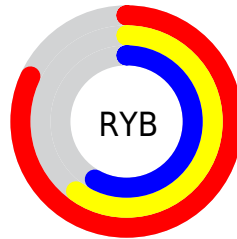
Distribution



Red (82%)

Green (60%)

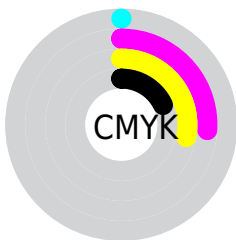
Blue (58%)



Red (82%)

Yellow (60%)

Blue (58%)

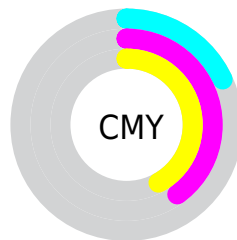


Cyan (0%)

Magenta (26%)

Yellow (28%)

Black (18%)



Cyan (18%)


Magenta (40%)


Yellow (42%)

Brightness & Saturation Gradients


These gradients show how the HunterLab color 62.2021, 14.5219, 11.4803 changes by changing the brightness by 10 percent. The first figure shows a shift by +10% for each color and the second figure -10%.


Similar to the brightness gradients but the following saturation gradients show a change of the HunterLab color 62.2021, 14.5219, 11.4803 by changing the saturation by 10% instead.


 62.2021, 14.5219,
11.4803


 62.2021, 14.5219,
11.4803


184.5488, 15.0924,
22.1279

 51.4984, 14.1209,
10.3294


 85.5388, 15.0732,
13.7866

 41.4894, 13.6278,
9.1705


 98.1028, 15.2439,
14.9471

 32.2288, 13.0265,
7.9952


111.2281, 15.3517,
16.1159

 23.7829, 12.2994,
6.7883

124.8915, 15.4014,
17.2947

 16.2395, 11.4242,
5.5236

139.0727, 15.3971,
18.4845

 9.7232, 10.3778,
5.0299

153.7533, 15.3422,

0.0000, INF, NaN

19.6862

0.0000, NaN, NaN

168.9170, 15.2398,
20.9005

0.0000, NaN, NaN

■ 62.2021, 14.5219,
11.4803

■ 62.2021, 14.5219,
11.4803

■ 56.8271, 21.7421,
14.0175

■ 67.9762, 7.6133,
8.9352

■ 51.9186, 29.2180,
16.4920

■ 74.0858, 1.0320,
6.4069

■ 47.5626, 36.7913,
18.8181

■ 80.4847, -5.2443,
3.9089

■ 43.8522, 44.1711,
20.8675

■ 87.1343, -11.2475,
1.4451

■ 40.8772, 50.9133,
22.4786

■ 94.0039, -17.0129,
-0.9855

■ 38.7043, 56.4714,
23.4974

■ 95.9948, -19.5628,
0.3757

■ 37.3426, 60.3410,
23.9117

■ 37.1901, 60.7792,
23.9804

Harmonies

Analogous

The Analogous color harmony consists of three colors that are next to each other on the color wheel.



62.2036, 17.1019, 2.8785



62.2021, 14.5219, 11.4803



62.2036, 7.0779, 17.0465

Triad

The Triadic color harmony groups three colors that are evenly spaced from another and form a triangle on the color wheel.



62.2036, 14.5194, 11.4813



62.2036, -18.8786, 12.2287



62.2036, -3.8527, -17.8283

Complementary

The Complementary color scheme is a pair of colors which are on the opposite of each other on the color wheel.



62.2021, 14.5219, 11.4803



73.2487, -18.1961, -3.4857

Split Complementary

Split-complementary colors differ from the complementary color scheme. The scheme consists of three colors, the original color and two neighbors of the complement color.



62.2036, -13.0813, -14.3105



62.2021, 14.5219, 11.4803



62.2036, -21.4101, 3.8891

Square

The Square scheme is like the rectangle color scheme, but the four colors are evenly spaced on the color wheel.



62.2036, 14.5194, 11.4813



62.2036, -12.2162, 17.4277



62.2036, -19.3554, -5.9690



62.2036, 6.1011, -14.9574

Rectangle

The Rectangle color scheme consists of four colors that form a rectangle on the color wheel.



62.2021, 14.5219, 11.4803



62.2036, 0.5878, 18.7793



62.2036, -19.3554, -5.9690



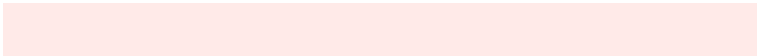
62.2036, -7.1382, -17.3444

Sweetspot

The Sweet Spot groups the original color and five complimentary colors.



62.2036, 14.5194, 11.4813



92.6999, 1.8999, 8.3018



62.6266, 25.9304, -14.4950



42.3540, 1.4338, 4.0568

0.0000, NaN, NaN



46.2646, -2.4686, 2.5136

Same Dimension

The Same Dimension uses a secret algorithm to generate beautiful new colors.



62.2036, 14.5194, 11.4813



74.1710, 23.7260, 16.3886



70.4409, -0.4796, 19.4639



34.5935, 0.8038, 3.1423



29.4607, 47.6475, 18.9877



7.3650, 9.9915, 4.7132

Inverse Universe

The Inverse Universe completely reimagines the original color for something new.



73.2487, -18.1961, -3.4857



90.8270, -25.8564, -6.2435



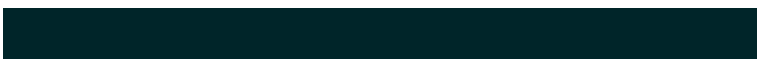
64.0745, -3.9412, -15.8053



36.3708, -4.4167, 0.7450



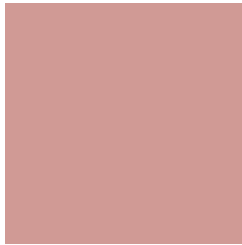
50.9489, -23.8003, -12.3036



12.2599, -5.8916, -2.6056

Previews

White Background



This preview shows how the HunterLab color 62.2021, 14.5219, 11.4803 looks on a white background.

Color Contrast Check

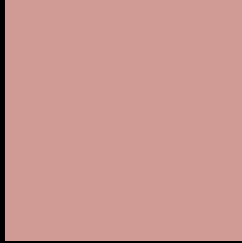
Large Text (above 18pt) WCAG AA × Fail

Any Text WCAG AA × Fail

Large Text (above 18pt) WCAG AAA × Fail

Any Text WCAG AAA × Fail

Black Background



This preview shows how the HunterLab color 62.2021, 14.5219, 11.4803 looks on a black background.

Color Contrast Check

Large Text (above 18pt) WCAG AA ✓ Pass

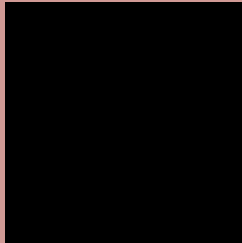
Any Text WCAG AA ✓ Pass

Large Text (above 18pt) WCAG AAA ✓ Pass

Any Text WCAG AAA ✓ Pass

If you want to check with other color combinations, try the [Color Contrast Checker](#).

HunterLab 62.2021, 14.5219, 11.4803 Background



This preview shows how black text looks on a background with the HunterLab color 62.2021, 14.5219, 11.4803.



This preview shows how white text looks on a background with the HunterLab color 62.2021, 14.5219,

Color Blindness Simulation

Color vision deficiency is a very complex topic, and I could not describe the different causes any better than Wikipedia does, so if you want to learn more, you should check out their [article about color blindness](#).

Dichromacy



Original Color

62.2021, 14.5219, 11.4803

Protanopia

62.3875, -3.1637, 8.4966

Deuteranopia

62.2127, 4.6788, 11.7163



Tritanopia

62.2916, 18.2702, 5.7230

Trichromacy



Original Color

62.2021, 14.5219, 11.4803

Protanomaly

62.1125, 3.1514, 9.5611

Deuteranomaly

62.0179, 8.3183, 11.5761

Tritanomaly

62.2948, 16.6532, 7.8898

Monochromacy



Original Color

62.2021, 14.5219, 11.4803

Achromatopsia

63.4017, -3.3830, 3.4447

Achromatomaly

62.7295, 2.8054, 6.3946

CSS Examples

Text

The CSS property to change the color of the text to HunterLab 62.2021, 14.5219, 11.4803 is called "color". The color property can be set on classes, ids or directly on the HTML element.

This example shows how text in the color `rgb(208, 154, 149)` looks like.

```
.text, #text, p{  
    color:rgb(208, 154, 149)  
}
```

If you want to add a text shadow in that color use the text-shadow property, you can generate a text shadow directly with our [CSS Text Shadow Generator](#).

Here you see how black text with a 4 pixel rgb(208, 154, 149) colored shadow looks like.

```
.shadow{ text-shadow: 4px 4px 2px rgb(208, 154, 149) }
```

Border

The CSS property to change the border of an element to HunterLab 62.2021, 14.5219, 11.4803 is called "border". The border property can be set on classes, ids or directly on the HTML element.

This example shows the color as border, it can be applied via the CSS property "border" or "border-color".

```
.border, #border, table{ border:4px solid rgb(208, 154, 149) }
```


If only the border color should be changed use the property `border-color`.

```
.border{ border-color:rgb(208, 154, 149) }
```

If you want to add a box shadow in that color use:

Here you see how a box with a 4 pixel `rgb(208, 154, 149)` colored shadow looks like.

```
.boxshadow{ -moz-box-shadow:4px 4px 4px  
4px rgb(208, 154, 149); -webkit-box-  
shadow:4px 4px 4px 4px rgb(208, 154, 149);  
box-shadow:4px 4px 4px 4px rgb(208, 154,  
149) }
```

Background

The CSS property to change the background color of an element to HunterLab 62.2021, 14.5219, 11.4803 is called "background". The background property can be set on classes, ids or directly on the HTML element.

```
.background, #background, body{  
background: rgb(208, 154, 149) }
```

If only the background color should be changed can be used:

```
.background{ background-color: rgb(208,  
154, 149) }
```

This example shows the color as background, it is applied via the CSS property "background".

To optimize and compress your CSS code, you can use our [online CSS compressor and optimizer](#) based on csstidy. If you want to create a linear or radial gradient as background or border, check our [CSS Gradient Generator](#).

Hey! You found this booklet interesting? Support Converting Colors with the new Membership Option!

The pro membership hides all ads, plus gives you double the colors in the color bucket, and more awesome pro features!

[Learn more, Memberships starting at \\$2.50/m!](#)

**Follow me
on Twitter!**

@ConvertingColor