

Converting Colors

HunterLab(62.3170, 4.3854,
12.3568)

Have a look what the booklet for
HunterLab(62.3170, 4.3854,
12.3568) contains.

HunterLab(62.1874, 4.5432, 12.0814)	3
<i>Conversions</i>	4
<i>Details</i>	6
<i>Harmonies</i>	12
<i>Previews</i>	24
<i>Color Blindness Simulation</i>	28
<i>CSS Examples</i>	31

Color

**HunterLab(62.1874, 4.5432,
12.0814)**

Conversions

Conversions Part 1

Format	Color
Hex	BFA193
RGB	191, 161, 147
RGB Percent	75%, 63%, 58%
CMY	0.2510, 0.3686, 0.4235
CMYK	0.00, 0.16, 0.23, 0.25
HSL	19°, 26%, 66%
HSV	19°, 23%, 75%
XYZ	39.4972, 38.6727, 32.9867
YIQ	168.3740, 22.3740, 2.0060

Conversions

Conversions Part 2

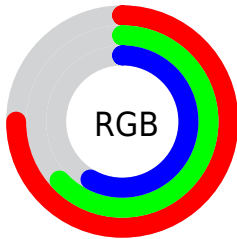
Format	Color
R_{YB}	191, 168, 147
Decimal	12558739
CIE _{Lab}	68.51, 8.83, 11.39
CIE _{LCh}	69, 14.413, 52.204
Yxy	38.6745, 0.3553, 0.3479
Android (android.graphics.Color)	4290748819 (0xFFBFA193)
YUV	168.3740, -10.5374, 19.8430
Hunter-Lab	62.1874, 4.5432, 12.0814

Details

The HunterLab color $62.1874, 4.5432, 12.0814$ is a light color, and the websafe version is hex $CC9999$. A complement of this color would be $64.3490, -9.5355, -5.9308$, and the grayscale version is $62.7669, -3.3491, 3.4102$.

A 20% lighter version of the original color is $85.6068, 4.0902, 14.5510$, and $41.3524, 4.8847, 9.7000$ is the 20% darker color. If you saturate the color by 10%, you get $58.1438, 8.6542, 15.1895$, and if you desaturate by 10%, it is $66.4195, 0.7225, 8.6925$.

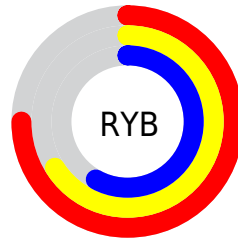
Distribution



Red (75%)

Green (63%)

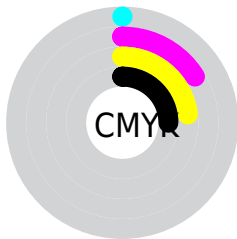
Blue (58%)



Red (75%)

Yellow (66%)

Blue (58%)

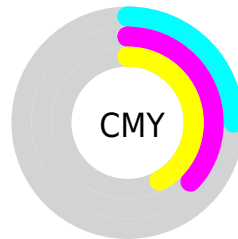


Cyan (0%)

Magenta (16%)

Yellow (23%)

Black (25%)



Cyan (25%)

Magenta (37%)

Yellow (42%)

Brightness & Saturation Gradients

These gradients show how the HunterLab color 62.1874, 4.5432, 12.0814 changes by changing the brightness by 10 percent. The first figure shows a shift by +10% for each color and the second figure -10%.

Similar to the brightness gradients but the following saturation gradients show a change of the HunterLab color 62.1874, 4.5432, 12.0814 by changing the saturation by 10% instead.

■ 62.1874, 4.5432,
12.0814

■ 62.1874, 4.5432,
12.0814

184.5277, 1.3031,
23.0663

■ 51.4846, 4.6569,
10.8814

■ 85.5224, 4.1356,
14.4761

■ 41.4765, 4.7057,
9.6692

■ 98.0857, 3.8560,
15.6771

■ 32.2170, 4.6780,
8.4352

111.2102, 3.5303,
16.8845

■ 23.7722, 4.5608,
7.1624

124.8729, 3.1615,
18.0999

■ 16.2301, 4.3349,
5.8215

139.0534, 2.7523,
19.3249

■ 9.7153, 3.9699,
5.3964

153.7334, 2.3049,

0.0000, INF, NaN

20.5605

0.0000, NaN, NaN

168.8965, 1.8213,
21.8074

0.0000, NaN, NaN

■ 62.1874, 4.5432,
12.0814

■ 62.1874, 4.5432,
12.0814

■ 58.1438, 8.6542,
15.1895

■ 66.4195, 0.7225,
8.6925

■ 54.3082, 13.0778,
17.9594

■ 70.8155, -2.8244,
5.0646

■ 50.7092, 17.8154,
20.3268

■ 75.3596, -6.1249,
1.2346

■ 47.3778, 22.8478,
22.2176

■ 80.0371, -9.2042,
-2.7687

■ 44.3477, 28.1216,
23.5541

■ 84.8353, -12.0863,
-6.9222

■ 41.6542, 33.5347,
24.2682

■ 89.5023, -16.1440,
-7.8038

■ 39.3303, 38.9240,
24.3271

■ 93.8154, -22.6287,
-2.3783

■ 37.9360, 42.5087,
24.1202

■ 94.7715, -24.0319,
-1.2105

Harmonies

Analogous

The Analogous color harmony consists of three colors that are next to each other on the color wheel.



62.1888, 8.7032, 7.7210



62.1874, 4.5432, 12.0814



62.1888, -1.6137, 14.0694

Triad

The Triadic color harmony groups three colors that are evenly spaced from another and form a triangle on the color wheel.



62.1888, 4.5411, 12.0823



62.1888, -15.2493, 4.9795



62.1888, 1.4823, -8.6857

Complementary

The Complementary color scheme is a pair of colors which are on the opposite of each other on the color wheel.



62.1874, 4.5432, 12.0814



64.3490, -9.5355, -5.9308

Split Complementary

Split-complementary colors differ from the complementary color scheme. The scheme consists of three colors, the original color and two neighbors of the complement color.



62.1888, -5.0112, -9.6126



62.1874, 4.5432, 12.0814



62.1888, -14.4969, -1.2874

Square

The Square scheme is like the rectangle color scheme, but the four colors are evenly spaced on the color wheel.



62.1888, 4.5411, 12.0823



62.1888, -12.9115, 10.2525



62.1888, -10.8120, -6.7837



62.1888, 6.8871, -4.3675

Rectangle

The Rectangle color scheme consists of four colors that form a rectangle on the color wheel.



62.1874, 4.5432, 12.0814



62.1888, -5.9469, 13.9397



62.1888, -10.8120, -6.7837



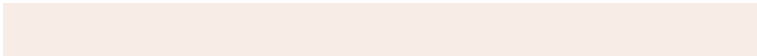
62.1888, -0.6520, -9.4210

Sweetspot

The Sweet Spot groups the original color and five complimentary colors.



62.1888, 4.5411, 12.0823



92.3487, -1.8875, 8.7913



59.2632, 16.3545, -4.8450



43.1065, -0.7494, 4.2590



98.8636, -5.2751, 5.3714



45.2661, -2.4153, 2.4594

Same Dimension

The Same Dimension uses a secret algorithm to generate beautiful new colors.



62.1888, 4.5411, 12.0823



80.2663, 9.0030, 18.4693



68.5732, -6.3212, 18.2764



31.6524, -0.2871, 3.4336



30.9641, 33.8664, 19.6728



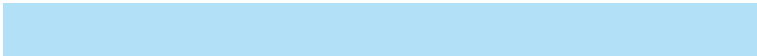
7.0466, 4.3569, 4.4184

Inverse Universe

The Inverse Universe completely reimagines the original color for something new.



64.3490, -9.5355, -5.9308



83.8032, -14.1016, -11.0644



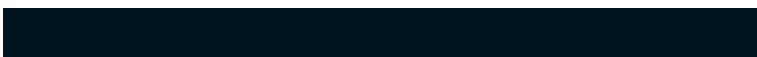
57.8188, 1.2193, -14.8958



32.0678, -2.9849, -0.0240



36.2647, -6.7613, -30.7321



7.9251, -2.4338, -4.6519

Previews

White Background



This preview shows how the HunterLab color 62.1874, 4.5432, 12.0814 looks on a white background.

Color Contrast Check

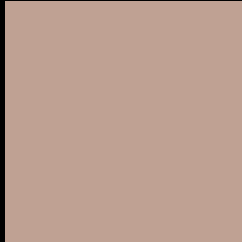
Large Text (above 18pt) WCAG AA × Fail

Any Text WCAG AA × Fail

Large Text (above 18pt) WCAG AAA × Fail

Any Text WCAG AAA × Fail

Black Background



This preview shows how the HunterLab color 62.1874, 4.5432, 12.0814 looks on a black background.

Color Contrast Check

Large Text (above 18pt) WCAG AA ✓ Pass

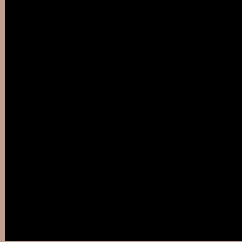
Any Text WCAG AA ✓ Pass

Large Text (above 18pt) WCAG AAA ✓ Pass

Any Text WCAG AAA ✓ Pass

If you want to check with other color combinations, try the [Color Contrast Checker](#).

HunterLab 62.1874, 4.5432, 12.0814 Background



This preview shows how black text looks on a background with the HunterLab color 62.1874, 4.5432, 12.0814.



This preview shows how white text looks on a background with the HunterLab color 62.1874, 4.5432,

Color Blindness Simulation

Color vision deficiency is a very complex topic, and I could not describe the different causes any better than Wikipedia does, so if you want to learn more, you should check out their [article about color blindness](#).

Dichromacy



Original Color

62.1874, 4.5432, 12.0814

Protanopia

62.3202, -3.7157, 10.8852

Deuteranopia

62.1874, 4.5432, 12.0814



Tritanopia

62.3100, 10.5039, 2.3920

Trichromacy



Original Color

62.1874, 4.5432, 12.0814

Protanomaly

62.2764, -0.9192, 11.2881

Deuteranomaly

62.1874, 4.5432, 12.0814

Tritanomaly

62.2434, 8.4007, 5.9406

Monochromacy



Original Color

62.1874, 4.5432, 12.0814

Achromatopsia

62.5758, -3.3389, 3.3999

Achromatomaly

62.1920, -0.6178, 6.6058

CSS Examples

Text

The CSS property to change the color of the text to HunterLab 62.1874, 4.5432, 12.0814 is called "color". The color property can be set on classes, ids or directly on the HTML element.

This example shows how text in the color `rgb(191, 161, 147)` looks like.

```
.text, #text, p{  
    color:rgb(191, 161, 147)  
}
```

If you want to add a text shadow in that color use the text-shadow property, you can generate a text shadow directly with our [CSS Text Shadow Generator](#).

Here you see how black text with a 4 pixel rgb(191, 161, 147) colored shadow looks like.

```
.shadow{ text-shadow: 4px 4px 2px rgb(191, 161, 147) }
```

Border

The CSS property to change the border of an element to HunterLab 62.1874, 4.5432, 12.0814 is called "border". The border property can be set on classes, ids or directly on the HTML element.

This example shows the color as border, it can be applied via the CSS property "border" or "border-color".

```
.border, #border, table{ border:4px solid rgb(191, 161, 147) }
```


If only the border color should be changed use the property `border-color`.

```
.border{ border-color:rgb(191, 161, 147) }
```

If you want to add a box shadow in that color use:

Here you see how a box with a 4 pixel `rgb(191, 161, 147)` colored shadow looks like.

```
.boxshadow{ -moz-box-shadow:4px 4px 4px  
4px rgb(191, 161, 147); -webkit-box-  
shadow:4px 4px 4px 4px rgb(191, 161, 147);  
box-shadow:4px 4px 4px 4px rgb(191, 161,  
147) }
```

Background

The CSS property to change the background color of an element to HunterLab 62.1874, 4.5432, 12.0814 is called "background". The background property can be set on classes, ids or directly on the HTML element.

```
.background, #background, body{  
background: rgb(191, 161, 147) }
```

If only the background color should be changed can be used:

```
.background{ background-color: rgb(191,  
161, 147) }
```

This example shows the color as background, it is applied via the CSS property "background".

To optimize and compress your CSS code, you can use our [online CSS compressor and optimizer](#) based on csstidy. If you want to create a linear or radial gradient as background or border, check our [CSS Gradient Generator](#).

Hey! You found this booklet interesting? Support Converting Colors with the new Membership Option!

The pro membership hides all ads, plus gives you double the colors in the color bucket, and more awesome pro features!

[Learn more, Memberships starting at \\$2.50/m!](#)

**Follow me
on Twitter!**

@ConvertingColor