

Converting Colors

HunterLab(62.3678, 5.1179,
12.6682)

Have a look what the booklet for
HunterLab(62.3678, 5.1179,
12.6682) contains.

HunterLab(62.3719, 5.1106, 12.6723)	3
<i>Conversions</i>	4
<i>Details</i>	6
<i>Harmonies</i>	12
<i>Previews</i>	24
<i>Color Blindness Simulation</i>	28
<i>CSS Examples</i>	31

Color

**HunterLab(62.3719, 5.1106,
12.6723)**

Conversions

Conversions Part 1

Format	Color
Hex	C1A192
RGB	193, 161, 146
RGB Percent	76%, 63%, 57%
CMY	0.2431, 0.3686, 0.4274
CMYK	0.00, 0.17, 0.24, 0.24
HSL	19°, 27%, 66%
HSV	19°, 24%, 76%
XYZ	39.9255, 38.9025, 32.5988
YIQ	168.8580, 23.8870, 2.1190

Conversions

Conversions Part 2

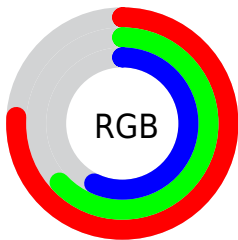
Format	Color
R_{YB}	193, 168, 146
Decimal	12689810
CIE _{Lab}	68.68, 9.46, 12.21
CIE _{LCh}	69, 15.441, 52.233
Yxy	38.9043, 0.3583, 0.3491
Android (android.graphics.Color)	4290879890 (0xFFC1A192)
YUV	168.8580, -11.2690, 21.1725
Hunter-Lab	62.3719, 5.1106, 12.6723

Details

The HunterLab color $62.3719, 5.1106, 12.6723$ is a light color, and the websafe version is hex $CC9999$. A complement of this color would be $64.6536, -9.8881, -6.6007$, and the grayscale version is $62.9692, -3.3599, 3.4212$.

A 20% lighter version of the original color is $85.7939, 4.6666, 15.1846$, and $41.5361, 5.4469, 10.2356$ is the 20% darker color. If you saturate the color by 10%, you get $58.3094, 9.3045, 15.7801$, and if you desaturate by 10%, it is $66.6279, 1.2134, 9.2720$.

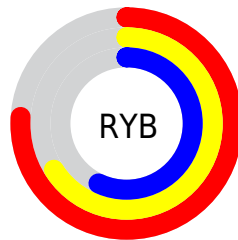
Distribution



Red (76%)

Green (63%)

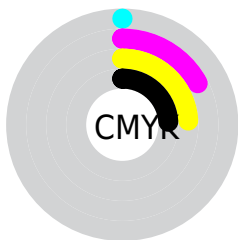
Blue (57%)



Red (76%)

Yellow (66%)

Blue (57%)

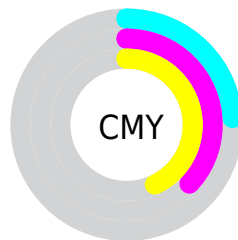


Cyan (0%)

Magenta (17%)

Yellow (24%)

Black (24%)



Cyan (24%)

Magenta (37%)

Yellow (43%)

Brightness & Saturation Gradients

These gradients show how the HunterLab color 62.3719, 5.1106, 12.6723 changes by changing the brightness by 10 percent. The first figure shows a shift by +10% for each color and the second figure -10%.

Similar to the brightness gradients but the following saturation gradients show a change of the HunterLab color 62.3719, 5.1106, 12.6723 by changing the saturation by 10% instead.

■ 62.3719, 5.1106,
12.6723

■ 62.3719, 5.1106,
12.6723

184.7927, 2.0921,
23.9833

■ 51.6578, 5.1941,
11.4251

■ 85.7275, 4.7590,
15.1524

■ 41.6377, 5.2110,
10.1617

■ 98.3004, 4.5056,
16.3925

■ 32.3652, 5.1494,
8.8716

111.4341, 4.2050,
17.6370

■ 23.9062, 4.9958,
7.5361

125.1056, 3.8606,
18.8880

■ 16.3481, 4.7305,
6.1233

139.2946, 3.4749,
20.1471

■ 9.8148, 4.3226,
5.7035

153.9828, 3.0503,

0.0000, INF, NaN

21.4154

0.0000, NaN, NaN

169.1538, 2.5887,
22.6939

0.0000, NaN, NaN

■ 62.3719, 5.1106,
12.6723

■ 62.3719, 5.1106,
12.6723

■ 58.3094, 9.3045,
15.7801

■ 66.6279, 1.2134,
9.2720

■ 54.4605, 13.8168,
18.5359

■ 71.0522, -2.4032,
5.6231

■ 50.8546, 18.6462,
20.8732

■ 75.6283, -5.7667,
1.7641

■ 47.5236, 23.7699,
22.7160

■ 80.3411, -8.9027,
-2.2750

■ 44.5017, 29.1284,
23.9861

■ 85.1776, -11.8358,
-6.4698

■ 41.8244, 34.6113,
24.6176

■ 89.8790, -15.9745,
-7.3060

■ 39.5243, 40.0450,
24.5853

■ 94.2303, -22.5270,
-1.8576

■ 38.3936, 42.9696,
24.4102

■ 94.9092, -23.5260,
-1.0310

Harmonies

Analogous

The Analogous color harmony consists of three colors that are next to each other on the color wheel.



62.3733, 9.5928, 8.0381



62.3719, 5.1106, 12.6723



62.3733, -1.5061, 14.7730

Triad

The Triadic color harmony groups three colors that are evenly spaced from another and form a triangle on the color wheel.



62.3733, 5.1085, 12.6732



62.3733, -16.0878, 5.0971



62.3733, 1.8317, -9.6256

Complementary

The Complementary color scheme is a pair of colors which are on the opposite of each other on the color wheel.



62.3719, 5.1106, 12.6723



64.6536, -9.8881, -6.6007

Split Complementary

Split-complementary colors differ from the complementary color scheme. The scheme consists of three colors, the original color and two neighbors of the complement color.



62.3733, -5.1360, -10.6355



62.3719, 5.1106, 12.6723



62.3733, -15.2821, -1.6346

Square

The Square scheme is like the rectangle color scheme, but the four colors are evenly spaced on the color wheel.



62.3733, 5.1085, 12.6732



62.3733, -13.5965, 10.7235



62.3733, -11.3451, -7.5715



62.3733, 7.6437, -4.9467

Rectangle

The Rectangle color scheme consists of four colors that form a rectangle on the color wheel.



62.3719, 5.1106, 12.6723



62.3733, -6.1515, 14.6343



62.3733, -11.3451, -7.5715



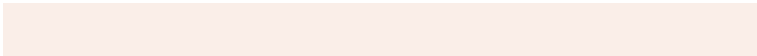
62.3733, -0.4603, -10.4248

Sweetspot

The Sweet Spot groups the original color and five complimentary colors.



62.3733, 5.1085, 12.6732



93.4339, -1.9166, 8.9021



59.2577, 17.7511, -5.3792



43.1092, -0.7539, 4.2619



98.8636, -5.2751, 5.3714



45.2661, -2.4153, 2.4594

Same Dimension

The Same Dimension uses a secret algorithm to generate beautiful new colors.



62.3733, 5.1085, 12.6732



80.6643, 9.6500, 19.1357



69.1763, -6.4873, 19.2043



32.5439, -0.2939, 3.5389



31.5172, 34.4641, 20.0241



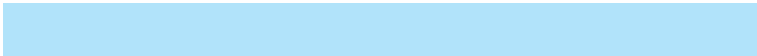
7.4544, 4.8407, 4.6781

Inverse Universe

The Inverse Universe completely reimagines the original color for something new.



64.6536, -9.8881, -6.6007



84.3227, -14.4690, -11.8293



57.6863, 1.5881, -16.2811



32.9676, -3.0692, -0.0343



36.8460, -6.7832, -31.4114



8.4048, -2.5072, -5.0929

Previews

White Background



This preview shows how the HunterLab color 62.3719, 5.1106, 12.6723 looks on a white background.

Color Contrast Check

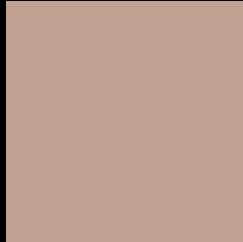
Large Text (above 18pt) WCAG AA × Fail

Any Text WCAG AA × Fail

Large Text (above 18pt) WCAG AAA × Fail

Any Text WCAG AAA × Fail

Black Background



This preview shows how the HunterLab color 62.3719, 5.1106, 12.6723 looks on a black background.

Color Contrast Check

Large Text (above 18pt) WCAG AA ✓ Pass

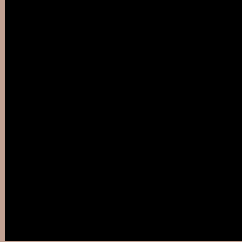
Any Text WCAG AA ✓ Pass

Large Text (above 18pt) WCAG AAA ✓ Pass

Any Text WCAG AAA ✓ Pass

If you want to check with other color combinations, try the [Color Contrast Checker](#).

HunterLab 62.3719, 5.1106, 12.6723 Background



This preview shows how black text looks on a background with the HunterLab color 62.3719, 5.1106, 12.6723.



This preview shows how white text looks on a background with the HunterLab color 62.3719, 5.1106,

12.6723.

Color Blindness Simulation

Color vision deficiency is a very complex topic, and I could not describe the different causes any better than Wikipedia does, so if you want to learn more, you should check out their [article about color blindness](#).

Dichromacy



Original Color

62.3719, 5.1106, 12.6723

Protanopia

62.3870, -3.5348, 11.3584

Deuteranopia

62.2668, 4.7590, 12.5578



Tritanopia

62.5234, 11.1978, 2.6592

Trichromacy



Original Color

62.3719, 5.1106, 12.6723

Protanomaly

62.4448, -0.3918, 11.8698

Deuteranomaly

62.2668, 4.7590, 12.5578

Tritanomaly

62.4272, 8.9480, 6.6003

Monochromacy



Original Color

62.3719, 5.1106, 12.6723

Achromatopsia

62.9885, -3.3609, 3.4223

Achromatomaly

62.6982, -0.3146, 6.7435

CSS Examples

Text

The CSS property to change the color of the text to HunterLab 62.3719, 5.1106, 12.6723 is called "color". The color property can be set on classes, ids or directly on the HTML element.

This example shows how text in the color `rgb(193, 161, 146)` looks like.

```
.text, #text, p{  
    color:rgb(193, 161, 146)  
}
```

If you want to add a text shadow in that color use the text-shadow property, you can generate a text shadow directly with our [CSS Text Shadow Generator](#).

Here you see how black text with a 4 pixel rgb(193, 161, 146) colored shadow looks like.

```
.shadow{ text-shadow: 4px 4px 2px rgb(193, 161, 146) }
```

Border

The CSS property to change the border of an element to HunterLab 62.3719, 5.1106, 12.6723 is called "border". The border property can be set on classes, ids or directly on the HTML element.

This example shows the color as border, it can be applied via the CSS property "border" or "border-color".

```
.border, #border, table{ border:4px solid rgb(193, 161, 146) }
```


If only the border color should be changed use the property `border-color`.

```
.border{ border-color:rgb(193, 161, 146) }
```

If you want to add a box shadow in that color use:

Here you see how a box with a 4 pixel `rgb(193, 161, 146)` colored shadow looks like.

```
.boxshadow{ -moz-box-shadow:4px 4px 4px  
4px rgb(193, 161, 146); -webkit-box-  
shadow:4px 4px 4px 4px rgb(193, 161, 146);  
box-shadow:4px 4px 4px 4px rgb(193, 161,  
146) }
```

Background

The CSS property to change the background color of an element to HunterLab 62.3719, 5.1106, 12.6723 is called "background". The background property can be set on classes, ids or directly on the HTML element.

```
.background, #background, body{  
background: rgb(193, 161, 146) }
```

If only the background color should be changed can be used:

```
.background{ background-color: rgb(193,  
161, 146) }
```

This example shows the color as background, it is applied via the CSS property "background".

To optimize and compress your CSS code, you can use our [online CSS compressor and optimizer](#) based on csstidy. If you want to create a linear or radial gradient as background or border, check our [CSS Gradient Generator](#).

Hey! You found this booklet interesting? Support Converting Colors with the new Membership Option!

The pro membership hides all ads, plus gives you double the colors in the color bucket, and more awesome pro features!

[Learn more, Memberships starting at \\$2.50/m!](#)

**Follow me
on Twitter!**

@ConvertingColor