

Converting Colors

HunterLab(62.4214, 4.8680,
5.1738)

Have a look what the booklet for
HunterLab(62.4214, 4.8680, 5.1738)
contains.

HunterLab(62.4180, 4.7892, 5.1837)	3
<i>Conversions</i>	4
<i>Details</i>	6
<i>Harmonies</i>	12
<i>Previews</i>	24
<i>Color Blindness Simulation</i>	28
<i>CSS Examples</i>	31

Color

**HunterLab(62.4180, 4.7892,
5.1837)**

Conversions

Conversions Part 1

Format	Color
Hex	BAA2A4
RGB	186, 162, 164
RGB Percent	73%, 64%, 64%
CMY	0.2706, 0.3647, 0.3569
CMYK	0.00, 0.13, 0.12, 0.27
HSL	355°, 15%, 68%
HSV	355°, 13%, 73%
XYZ	39.8708, 38.9601, 40.5405
YIQ	169.4040, 13.6620, 5.7100

Conversions

Conversions Part 2

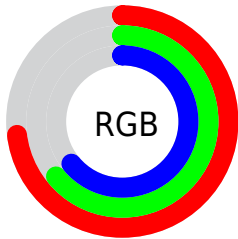
Format	Color
RYB	186, 162, 164
Decimal	12231332
CIELab	68.72, 9.11, 2.19
CIELCh	69, 9.366, 13.535
Yxy	38.9618, 0.3340, 0.3264
Android (android.graphics.Color)	4290421412 (0xFFBAA2A4)
YUV	169.4040, -2.6642, 14.5547
Hunter-Lab	62.4180, 4.7892, 5.1837

Details

The HunterLab color $62.4180, 4.7892, 5.1837$ is a light color, and the websafe version is hex 999999 . A complement of this color would be $68.0153, -11.1310, 2.1839$, and the grayscale version is $63.1632, -3.3702, 3.4318$.

A 20% lighter version of the original color is $85.8006, 4.2503, 6.6336$, and $41.6032, 5.1681, 3.8800$ is the 20% darker color. If you saturate the color by 10%, you get $56.8425, 11.6767, 6.4603$, and if you desaturate by 10%, it is $68.3116, -1.8560, 4.0931$.

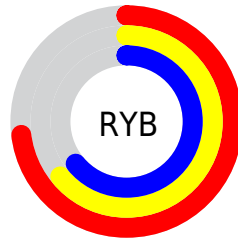
Distribution



Red (73%)

Green (64%)

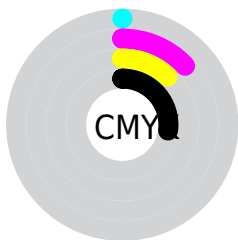
Blue (64%)



Red (73%)

Yellow (64%)

Blue (64%)

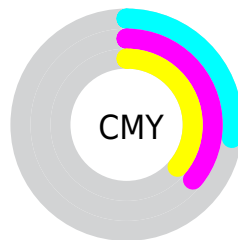


Cyan (0%)

Magenta (13%)

Yellow (12%)

Black (27%)



Cyan (27%)

Magenta (36%)

Yellow (36%)

Brightness & Saturation Gradients

These gradients show how the HunterLab color 62.4180, 4.7892, 5.1837 changes by changing the brightness by 10 percent. The first figure shows a shift by +10% for each color and the second figure -10%.

Similar to the brightness gradients but the following saturation gradients show a change of the HunterLab color 62.4180, 4.7892, 5.1837 by changing the saturation by 10% instead.

62.4180, 4.7892,
5.1837

62.4180, 4.7892,
5.1837

184.8589, 1.6412,
12.6487

51.7011, 4.8908,
4.4892

85.7788, 4.4049,
6.6617

41.6780, 4.9266,
3.8234

98.3540, 4.1361,
7.4414

32.4022, 4.8851,
3.1881

111.4900, 3.8209,
8.2475

23.9397, 4.7533,
2.5841

125.1637, 3.4622,
9.0792

16.3776, 4.5117,
2.0109

139.3548, 3.0627,
9.9358

9.8397, 4.1300,
1.4751

154.0451, 2.6248,

0.0000, INF, NaN

10.8166

0.0000, NaN, NaN

169.2181, 2.1504,
11.7211

0.0000, NaN, NaN

■ 62.4180, 4.7892,
5.1837

■ 62.4180, 4.7892,
5.1837

■ 56.8425, 11.6767,
6.4603

■ 68.3116, -1.8560,
4.0931

■ 51.6390, 18.7977,
7.9425

■ 74.4731, -8.2672,
3.1602

■ 46.8809, 26.0801,
9.6446

■ 80.8673, -14.4716,
2.3625

■ 42.6550, 33.3571,
11.5557

■ 87.4652, -20.4982,
1.6790

■ 39.0598, 40.3182,
13.6215

■ 94.2418, -26.3727,
1.0902

■ 36.1932, 46.4884,
15.7239

■ 94.4347, -25.2732,
-1.6508

■ 34.1297, 51.2954,
17.6797

■ 32.8848, 54.2746,
19.2799

■ 32.3652, 55.5372,
20.0547

Harmonies

Analogous

The Analogous color harmony consists of three colors that are next to each other on the color wheel.



62.4194, 4.6741, 1.1606



62.4180, 4.7892, 5.1837



62.4194, 2.6838, 8.5045

Triad

The Triadic color harmony groups three colors that are evenly spaced from another and form a triangle on the color wheel.



62.4194, 4.7874, 5.1847



62.4194, -8.8479, 8.7598



62.4194, -5.6266, -4.5023

Complementary

The Complementary color scheme is a pair of colors which are on the opposite of each other on the color wheel.



62.4180, 4.7892, 5.1837



68.0153, -11.1310, 2.1839

Split Complementary

Split-complementary colors differ from the complementary color scheme. The scheme consists of three colors, the original color and two neighbors of the complement color.



62.4194, -9.1319, -2.1808



62.4180, 4.7892, 5.1837



62.4194, -10.9575, 5.5549

Square

The Square scheme is like the rectangle color scheme, but the four colors are evenly spaced on the color wheel.



62.4194, 4.7874, 5.1847



62.4194, -5.2296, 10.4737



62.4194, -11.0600, 1.5561



62.4194, -1.4153, -4.6179

Rectangle

The Rectangle color scheme consists of four colors that form a rectangle on the color wheel.



62.4180, 4.7892, 5.1837



62.4194, 0.3391, 9.9460



62.4194, -11.0600, 1.5561



62.4194, -6.9238, -3.9473

Sweetspot

The Sweet Spot groups the original color and five complimentary colors.



62.4194, 4.7874, 5.1847



91.0245, -1.4734, 5.6702



62.9110, 7.8017, -4.8789



42.4284, -0.3773, 2.7103



97.7295, -5.2146, 5.3098



44.2712, -2.3622, 2.4053

Same Dimension

The Same Dimension uses a secret algorithm to generate beautiful new colors.



62.4194, 4.7874, 5.1847



82.2328, 8.5924, 7.3598



65.2335, -0.5331, 9.1174



30.0400, 1.1115, 2.2242



26.5556, 45.5862, 16.3157



5.0269, 8.7105, 2.4596

Inverse Universe

The Inverse Universe completely reimagines the original color for something new.



62.4194, 4.7874, 5.1847



82.2328, 8.5924, 7.3598



65.0220, -5.9287, -2.3971



30.0400, 1.1115, 2.2242



26.5556, 45.5862, 16.3157



5.0269, 8.7105, 2.4596

Previews

White Background



This preview shows how the HunterLab color 62.4180, 4.7892, 5.1837 looks on a white background.

Color Contrast Check

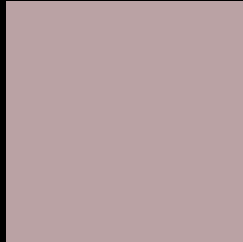
Large Text (above 18pt) WCAG AA × Fail

Any Text WCAG AA × Fail

Large Text (above 18pt) WCAG AAA × Fail

Any Text WCAG AAA × Fail

Black Background



This preview shows how the HunterLab color 62.4180, 4.7892, 5.1837 looks on a black background.

Color Contrast Check

Large Text (above 18pt) WCAG AA ✓ Pass

Any Text WCAG AA ✓ Pass

Large Text (above 18pt) WCAG AAA ✓ Pass

Any Text WCAG AAA ✓ Pass

If you want to check with other color combinations, try the [Color Contrast Checker](#).

HunterLab 62.4180, 4.7892, 5.1837 Background



This preview shows how black text looks on a background with the HunterLab color 62.4180, 4.7892, 5.1837.



This preview shows how white text looks on a background with the HunterLab color 62.4180, 4.7892,

Color Blindness Simulation

Color vision deficiency is a very complex topic, and I could not describe the different causes any better than Wikipedia does, so if you want to learn more, you should check out their [article about color blindness](#).

Dichromacy



Original Color

62.4180, 4.7892, 5.1837

Protanopia

62.5183, -2.0861, 3.8156

Deuteranopia

62.3180, 4.4539, 5.0626



Tritanopia

62.5073, 7.0697, 1.1403

Trichromacy



Original Color

62.4180, 4.7892, 5.1837

Protanomaly

62.3647, 0.3195, 4.1367

Deuteranomaly

62.3180, 4.4539, 5.0626

Tritanomaly

62.4154, 6.5809, 2.4494

Monochromacy



Original Color

62.4180, 4.7892, 5.1837

Achromatopsia

62.9885, -3.3609, 3.4223

Achromatomaly

62.5911, -0.3359, 3.9314

CSS Examples

Text

The CSS property to change the color of the text to HunterLab 62.4180, 4.7892, 5.1837 is called "color". The color property can be set on classes, ids or directly on the HTML element.

This example shows how text in the color `rgb(186, 162, 164)` looks like.

```
.text, #text, p{  
    color:rgb(186, 162, 164)  
}
```

If you want to add a text shadow in that color use the text-shadow property, you can generate a text shadow directly with our [CSS Text Shadow Generator](#).

Here you see how black text with a 4 pixel rgb(186, 162, 164) colored shadow looks like.

```
.shadow{ text-shadow: 4px 4px 2px rgb(186, 162, 164) }
```

Border

The CSS property to change the border of an element to HunterLab 62.4180, 4.7892, 5.1837 is called "border". The border property can be set on classes, ids or directly on the HTML element.

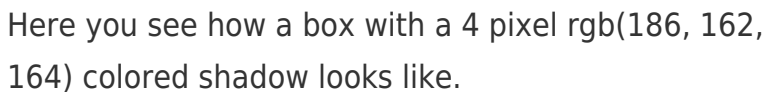
This example shows the color as border, it can be applied via the CSS property "border" or "border-color".

```
.border, #border, table{ border:4px solid rgb(186, 162, 164) }
```


If only the border color should be changed use the property `border-color`.

```
.border{ border-color:rgb(186, 162, 164) }
```

If you want to add a box shadow in that color use:



Here you see how a box with a 4 pixel `rgb(186, 162, 164)` colored shadow looks like.

```
.boxshadow{ -moz-box-shadow:4px 4px 4px 4px rgb(186, 162, 164); -webkit-box-shadow:4px 4px 4px 4px rgb(186, 162, 164); box-shadow:4px 4px 4px 4px rgb(186, 162, 164) }
```

Background

The CSS property to change the background color of an element to HunterLab 62.4180, 4.7892, 5.1837 is called "background". The background property can be set on classes, ids or directly on the HTML element.

```
.background, #background, body{  
background: rgb(186, 162, 164) }
```

If only the background color should be changed can be used:

```
.background{ background-color: rgb(186,  
162, 164) }
```

This example shows the color as background, it is applied via the CSS property "background".

To optimize and compress your CSS code, you can use our [online CSS compressor and optimizer](#) based on csstidy. If you want to create a linear or radial gradient as background or border, check our [CSS Gradient Generator](#).

Hey! You found this booklet interesting? Support Converting Colors with the new Membership Option!

The pro membership hides all ads, plus gives you double the colors in the color bucket, and more awesome pro features!

[Learn more, Memberships starting at \\$2.50/m!](#)

**Follow me
on Twitter!**

@ConvertingColor