

Converting Colors

HunterLab(62.4391, 13.8109,
13.5867)

Have a look what the booklet for
HunterLab(62.4391, 13.8109,
13.5867) contains.

HunterLab(62.4593, 13.7269, 13.6807)	3
<i>Conversions</i>	4
<i>Details</i>	6
<i>Harmonies</i>	12
<i>Previews</i>	24
<i>Color Blindness Simulation</i>	28
<i>CSS Examples</i>	31

Color

**HunterLab(62.4593, 13.7269,
13.6807)**

Conversions

Conversions Part 1

Format	Color
Hex	D19B90
RGB	209, 155, 144
RGB Percent	82%, 61%, 56%
CMY	0.1804, 0.3921, 0.4353
CMYK	0.00, 0.26, 0.31, 0.18
HSL	10°, 41%, 69%
HSV	10°, 31%, 82%
XYZ	43.0499, 39.0116, 31.6466
YIQ	169.8920, 35.7150, 8.0270

Conversions

Conversions Part 2

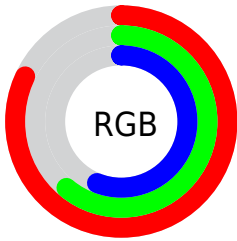
Format	Color
R _Y B	209, 157, 144
Decimal	13736848
CIE Lab	68.76, 18.64, 13.66
CIE LCh	69, 23.108, 36.232
Yxy	39.0135, 0.3786, 0.3431
Android (android.graphics.Color)	4291926928 (0xFFD19B90)
YUV	169.8920, -12.7648, 34.2977
Hunter-Lab	62.4593, 13.7269, 13.6807

Details

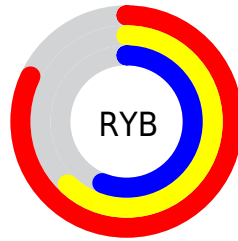
The HunterLab color $62.4593, 13.7269, 13.6807$ is a light color, and the websafe version is hex $CC9999$. A complement of this color would be $71.3578, -16.8029, -6.4442$, and the grayscale version is $63.3990, -3.3828, 3.4446$.

A 20% lighter version of the original color is $84.5165, 9.3981, 14.7638$, and $41.8104, 12.6765, 10.9684$ is the 20% darker color. If you saturate the color by 10%, you get $57.5003, 20.1750, 16.4281$, and if you desaturate by 10%, it is $67.7594, 7.6040, 10.7794$.

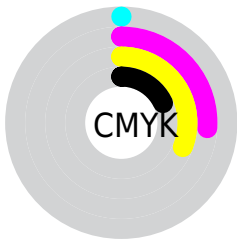
Distribution



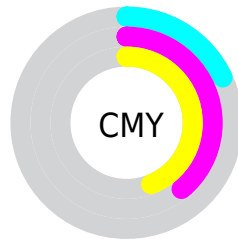
- Red (82%)
- Green (61%)
- Blue (56%)



- Red (82%)
- Yellow (62%)
- Blue (56%)



- Cyan (0%)
- Magenta (26%)
- Yellow (31%)
- Black (18%)



- Cyan (18%)
- Magenta (39%)
- Yellow (44%)

Brightness & Saturation Gradients

These gradients show how the HunterLab color 62.4593, 13.7269, 13.6807 changes by changing the brightness by 10 percent. The first figure shows a shift by +10% for each color and the second figure -10%.

Similar to the brightness gradients but the following saturation gradients show a change of the HunterLab color 62.4593, 13.7269, 13.6807 by changing the saturation by 10% instead.

62.4593, 13.7269,
13.6807

62.4593, 13.7269,
13.6807

184.9183, 13.9931,
25.5744

51.7399, 13.3667,
12.3487

85.8248, 14.2017,
16.3139

41.7142, 12.9166,
10.9932

98.4022, 14.3365,
17.6240

32.4355, 12.3606,
9.6015

111.5402, 14.4097,
18.9350

23.9697, 11.6813,
8.1522

125.2159, 14.4260,
20.2495

16.4041, 10.8560,
6.6083

139.4089, 14.3893,
21.5693

9.8620, 9.8595,
6.2951

154.1010, 14.3031,

0.0000, INF, NaN

22.8959

0.0000, NaN, NaN

169.2758, 14.1702,
24.2307

0.0000, NaN, NaN

■ 62.4593, 13.7269,
13.6807

■ 62.4593, 13.7269,
13.6807

■ 57.5003, 20.1750,
16.4281

■ 67.7594, 7.6040,
10.7794

■ 52.9335, 26.9205,
18.9501

■ 73.3496, 1.8117,
7.7688

■ 48.8248, 33.8621,
21.1532

■ 79.1930, -3.6745,
4.6817

■ 45.2450, 40.8079,
22.9190

■ 85.2581, -8.8852,
1.5388

■ 42.2649, 47.4502,
24.1200

■ 91.5191, -13.8529,
-1.6464

■ 39.9428, 53.3761,
24.6588

■ 96.0705, -19.2881,
0.4732

■ 38.4449, 57.6508,
24.6988

Harmonies

Analogous

The Analogous color harmony consists of three colors that are next to each other on the color wheel.



62.4608, 17.9353, 5.4410



62.4593, 13.7269, 13.6807



62.4608, 4.9760, 18.4941

Triad

The Triadic color harmony groups three colors that are evenly spaced from another and form a triangle on the color wheel.



62.4608, 13.7244, 13.6817



62.4608, -20.6933, 10.6279



62.4608, -1.1382, -18.7598

Complementary

The Complementary color scheme is a pair of colors which are on the opposite of each other on the color wheel.



62.4593, 13.7269, 13.6807



71.3578, -16.8029, -6.4442

Split Complementary

Split-complementary colors differ from the complementary color scheme. The scheme consists of three colors, the original color and two neighbors of the complement color.



62.4608, -11.2350, -16.7606



62.4593, 13.7269, 13.6807



62.4608, -22.0940, 1.2876

Square

The Square scheme is like the rectangle color scheme, but the four colors are evenly spaced on the color wheel.



62.4608, 13.7244, 13.6817



62.4608, -14.7819, 16.9444



62.4608, -18.7417, -8.9951



62.4608, 8.9983, -14.0802

Rectangle

The Rectangle color scheme consists of four colors that form a rectangle on the color wheel.



62.4593, 13.7269, 13.6807



62.4608, -2.0094, 19.6330



62.4608, -18.7417, -8.9951



62.4608, -4.6518, -18.8558

Sweetspot

The Sweet Spot groups the original color and five complimentary colors.



62.4608, 13.7244, 13.6817



93.2967, 0.8675, 8.9640



61.3084, 28.0383, -13.4962



42.6727, 0.8785, 4.4083

0.0000, NaN, NaN



46.2646, -2.4686, 2.5136

Same Dimension

The Same Dimension uses a secret algorithm to generate beautiful new colors.



62.4608, 13.7244, 13.6817



74.2405, 22.2504, 19.3371



71.5902, -2.6844, 22.2139



34.8239, 0.4045, 3.3977



30.3510, 44.7452, 19.4855



7.8566, 8.5497, 4.9909

Inverse Universe

The Inverse Universe completely reimagines the original color for something new.



71.3578, -16.8029, -6.4442



87.4697, -23.3813, -10.6393



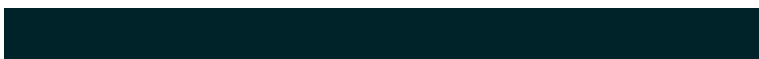
61.3878, -1.0449, -20.4518



36.1278, -4.0282, 0.4569



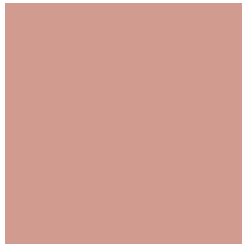
46.4094, -17.9623, -19.2323



11.3870, -4.7888, -3.8952

Previews

White Background



This preview shows how the HunterLab color 62.4593, 13.7269, 13.6807 looks on a white background.

Color Contrast Check

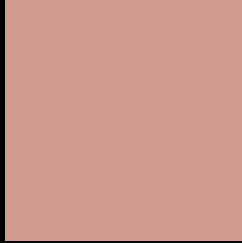
Large Text (above 18pt) WCAG AA × Fail

Any Text WCAG AA × Fail

Large Text (above 18pt) WCAG AAA × Fail

Any Text WCAG AAA × Fail

Black Background



This preview shows how the HunterLab color 62.4593, 13.7269, 13.6807 looks on a black background.

Color Contrast Check

Large Text (above 18pt) WCAG AA ✓ Pass

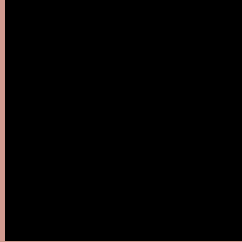
Any Text WCAG AA ✓ Pass

Large Text (above 18pt) WCAG AAA ✓ Pass

Any Text WCAG AAA ✓ Pass

If you want to check with other color combinations, try the [Color Contrast Checker](#).

HunterLab 62.4593, 13.7269, 13.6807 Background



This preview shows how black text looks on a background with the HunterLab color 62.4593, 13.7269, 13.6807.



This preview shows how white text looks on a background with the HunterLab color 62.4593, 13.7269, 13.6807.

Color Blindness Simulation

Color vision deficiency is a very complex topic, and I could not describe the different causes any better than Wikipedia does, so if you want to learn more, you should check out their [article about color blindness](#).

Dichromacy



Original Color

62.4593, 13.7269, 13.6807

Protanopia

62.7066, -3.8810, 11.2896

Deuteranopia

62.5790, 4.2134, 14.0138



Tritanopia

62.4385, 18.7875, 5.4523

Trichromacy



Original Color

62.4593, 13.7269, 13.6807

Protanomaly

62.3677, 2.2936, 11.8364

Deuteranomaly

62.3871, 7.8707, 13.8839

Tritanomaly

62.3846, 16.8817, 8.4207

Monochromacy



Original Color

62.4593, 13.7269, 13.6807

Achromatopsia

63.4017, -3.3830, 3.4447

Achromatomaly

62.9872, 2.1521, 7.1110

CSS Examples

Text

The CSS property to change the color of the text to HunterLab 62.4593, 13.7269, 13.6807 is called "color". The color property can be set on classes, ids or directly on the HTML element.

This example shows how text in the color `rgb(209, 155, 144)` looks like.

```
.text, #text, p{  
    color:rgb(209, 155, 144)  
}
```

If you want to add a text shadow in that color use the text-shadow property, you can generate a text shadow directly with our [CSS Text Shadow Generator](#).

Here you see how black text with a 4 pixel rgb(209, 155, 144) colored shadow looks like.

```
.shadow{ text-shadow: 4px 4px 2px rgb(209, 155, 144) }
```

Border

The CSS property to change the border of an element to HunterLab 62.4593, 13.7269, 13.6807 is called "border". The border property can be set on classes, ids or directly on the HTML element.

This example shows the color as border, it can be applied via the CSS property "border" or "border-color".

```
.border, #border, table{ border:4px solid rgb(209, 155, 144) }
```


If only the border color should be changed use the property `border-color`.

```
.border{ border-color:rgb(209, 155, 144) }
```

If you want to add a box shadow in that color use:

Here you see how a box with a 4 pixel `rgb(209, 155, 144)` colored shadow looks like.

```
.boxshadow{ -moz-box-shadow:4px 4px 4px  
4px rgb(209, 155, 144); -webkit-box-  
shadow:4px 4px 4px 4px rgb(209, 155, 144);  
box-shadow:4px 4px 4px 4px rgb(209, 155,  
144) }
```

Background

The CSS property to change the background color of an element to HunterLab 62.4593, 13.7269, 13.6807 is called "background". The background property can be set on classes, ids or directly on the HTML element.

```
.background, #background, body{  
background: rgb(209, 155, 144) }
```

If only the background color should be changed can be used:

```
.background{ background-color: rgb(209,  
155, 144) }
```

This example shows the color as background, it is applied via the CSS property "background".

To optimize and compress your CSS code, you can use our [online CSS compressor and optimizer](#) based on csstidy. If you want to create a linear or radial gradient as background or border, check our [CSS Gradient Generator](#).

Hey! You found this booklet interesting? Support Converting Colors with the new Membership Option!

The pro membership hides all ads, plus gives you double the colors in the color bucket, and more awesome pro features!

[Learn more, Memberships starting at \\$2.50/m!](#)

**Follow me
on Twitter!**

@ConvertingColor