

Converting Colors

HunterLab(62.5436, 32.4012,
11.3512)

Have a look what the booklet for
HunterLab(62.5436, 32.4012,
11.3512) contains.

HunterLab(62.5436, 32.4012, 11.3512)	3
<i>Conversions</i>	4
<i>Details</i>	6
<i>Harmonies</i>	12
<i>Previews</i>	24
<i>Color Blindness Simulation</i>	28
<i>CSS Examples</i>	31

Color

**HunterLab(62.5436, 32.4012,
11.3512)**

Conversions

Conversions Part 1

Format	Color
Hex	EC8D97
RGB	236, 141, 151
RGB Percent	93%, 55%, 59%
CMY	0.0745, 0.4470, 0.4078
CMYK	0.00, 0.40, 0.36, 0.07
HSL	354°, 71%, 74%
HSV	354°, 40%, 93%
XYZ	49.7029, 39.1170, 34.2089
YIQ	170.5450, 53.4100, 23.2500

Conversions

Conversions Part 2

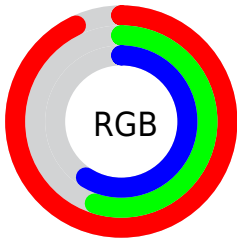
Format	Color
R _Y B	236, 141, 151
Decimal	15502743
CIE Lab	68.84, 37.15, 10.31
CIE LCh	69, 38.554, 15.505
Yxy	39.1189, 0.4040, 0.3180
Android (android.graphics.Color)	4293692823 (0xFFEC8D97)
YUV	170.5450, -9.6357, 57.4040
Hunter-Lab	62.5436, 32.4012, 11.3512

Details

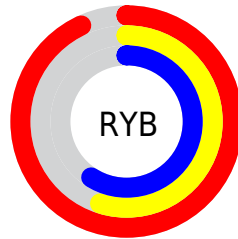
The HunterLab color **62.5436, 32.4012, 11.3512** is a light color, and the websafe version is hex **FF9999**. A complement of this color would be **84.3478, -31.8308, 0.8384**, and the grayscale version is **63.6515, -3.3963, 3.4583**.

A 20% lighter version of the original color is **80.7141, 17.9777, 7.6235**, and **41.8686, 30.0421, 9.2519** is the 20% darker color. If you saturate the color by 10%, you get **56.7970, 42.1002, 13.7315**, and if you desaturate by 10%, it is **68.9815, 22.7263, 9.3066**.

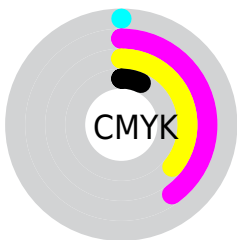
Distribution



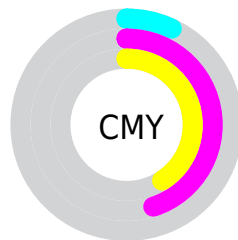
- Red (93%)
- Green (55%)
- Blue (59%)



- Red (93%)
- Yellow (55%)
- Blue (59%)



- Cyan (0%)
- Magenta (40%)
- Yellow (36%)
- Black (7%)



- Cyan (7%)
- Magenta (45%)
- Yellow (41%)

Brightness & Saturation Gradients

These gradients show how the HunterLab color 62.5436, 32.4012, 11.3512 changes by changing the brightness by 10 percent. The first figure shows a shift by +10% for each color and the second figure -10%.

Similar to the brightness gradients but the following saturation gradients show a change of the HunterLab color 62.5436, 32.4012, 11.3512 by changing the saturation by 10% instead.

62.5436, 32.4012,
11.3512

62.5436, 32.4012,
11.3512

185.0394, 38.8718,
21.9108

51.8192, 31.2407,
10.2137

85.9186, 34.4000,
13.6341

41.7879, 29.9666,
9.0694

98.5003, 35.2616,
14.7839

32.5033, 28.5668,
7.9105

111.6426, 36.0400,
15.9427

24.0311, 27.0376,
6.7225

125.3223, 36.7412,
17.1119

16.4581, 25.3961,
5.4804

139.5192, 37.3706,
18.2926

9.9077, 23.7451,
4.8726

154.2150, 37.9328,

0.0000, INF, NaN

19.4856

0.0000, NaN, NaN

169.3934, 38.4320,
20.6915

0.0000, NaN, NaN

■ 62.5436, 32.4012,
11.3512

■ 62.5436, 32.4012,
11.3512

■ 56.7970, 42.1002,
13.7315

■ 68.9815, 22.7263,
9.3066

■ 51.8681, 51.4488,
16.3984

■ 75.9923, 13.2838,
7.5881

■ 47.8935, 59.8338,
19.2236

■ 83.4843, 4.1485,
6.1663

■ 44.9825, 66.4858,
21.9791

■ 91.3827, -4.6690,
5.0023

■ 43.1725, 70.7310,
24.3735

■ 98.2715, -11.4019,
3.2753

■ 42.3111, 72.6233,
26.0680

Harmonies

Analogous

The Analogous color harmony consists of three colors that are next to each other on the color wheel.



62.5451, 32.5840, -5.1255



62.5436, 32.4012, 11.3512



62.5451, 21.9628, 22.1654

Triad

The Triadic color harmony groups three colors that are evenly spaced from another and form a triangle on the color wheel.



62.5451, 32.3980, 11.3524



62.5451, -25.5263, 21.9018



62.5451, -11.5214, -36.0662

Complementary

The Complementary color scheme is a pair of colors which are on the opposite of each other on the color wheel.



62.5436, 32.4012, 11.3512



84.3478, -31.8308, 0.8384

Split Complementary

Split-complementary colors differ from the complementary color scheme. The scheme consists of three colors, the original color and two neighbors of the complement color.



62.5451, -25.1678, -23.9203



62.5436, 32.4012, 11.3512



62.5451, -32.6313, 10.8801

Square

The Square scheme is like the rectangle color scheme, but the four colors are evenly spaced on the color wheel.



62.5451, 32.3980, 11.3524



62.5451, -12.0624, 27.0177



62.5451, -32.5077, -5.7462



62.5451, 5.8870, -35.8367

Rectangle

The Rectangle color scheme consists of four colors that form a rectangle on the color wheel.



62.5436, 32.4012, 11.3512



62.5451, 11.1921, 26.0470



62.5451, -32.5077, -5.7462



62.5451, -16.6567, -33.1756

Sweetspot

The Sweet Spot groups the original color and five complimentary colors.



62.5451, 32.3980, 11.3524



89.6476, 6.2980, 6.9901



64.1109, 42.8650, -33.1343



40.9712, 3.5137, 3.3234

0.0000, NaN, NaN



46.2646, -2.4686, 2.5136

Same Dimension

The Same Dimension uses a secret algorithm to generate beautiful new colors.



62.5451, 32.3980, 11.3524



63.2336, 43.8104, 14.4322



71.6707, 12.0691, 23.5261



38.8327, 1.5893, 2.8010



31.4277, 53.9710, 19.1440



8.8556, 15.3050, 4.6415

Inverse Universe

The Inverse Universe completely reimagines the original color for something new.



62.5451, 32.3980, 11.3524



63.2336, 43.8104, 14.4322



72.6886, -12.5632, -20.1586



38.8327, 1.5893, 2.8010



31.4277, 53.9710, 19.1440



8.8556, 15.3050, 4.6415

Previews

White Background



This preview shows how the HunterLab color 62.5436, 32.4012, 11.3512 looks on a white background.

Color Contrast Check

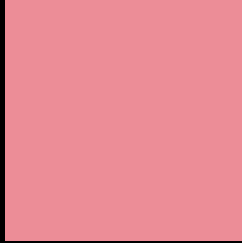
Large Text (above 18pt) WCAG AA × Fail

Any Text WCAG AA × Fail

Large Text (above 18pt) WCAG AAA × Fail

Any Text WCAG AAA × Fail

Black Background



This preview shows how the HunterLab color 62.5436, 32.4012, 11.3512 looks on a black background.

Color Contrast Check

Large Text (above 18pt) WCAG AA ✓ Pass

Any Text WCAG AA ✓ Pass

Large Text (above 18pt) WCAG AAA ✓ Pass

Any Text WCAG AAA ✓ Pass

If you want to check with other color combinations, try the [Color Contrast Checker](#).

HunterLab 62.5436, 32.4012, 11.3512 Background



This preview shows how black text looks on a background with the HunterLab color 62.5436, 32.4012, 11.3512.



This preview shows how white text looks on a background with the HunterLab color 62.5436, 32.4012, 11.3512.

Color Blindness Simulation

Color vision deficiency is a very complex topic, and I could not describe the different causes any better than Wikipedia does, so if you want to learn more, you should check out their [article about color blindness](#).

Dichromacy



Original Color

62.5436, 32.4012, 11.3512

Protanopia

62.8431, -2.5869, 5.0937

Deuteranopia

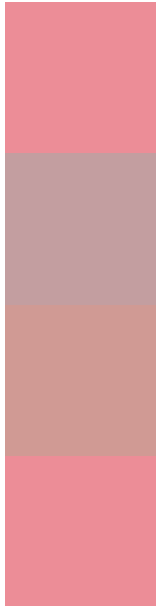
62.5729, 4.3903, 12.4785



Tritanopia

62.5436, 32.4012, 11.3512

Trichromacy



Original Color

62.5436, 32.4012, 11.3512

Protanomaly

62.1240, 9.3110, 6.7030

Deuteranomaly

62.1765, 14.3891, 11.8485

Tritanomaly

62.5436, 32.4012, 11.3512

Monochromacy



Original Color

62.5436, 32.4012, 11.3512

Achromatopsia

63.8154, -3.4050, 3.4672

Achromatomaly

62.7886, 8.8877, 5.6807

CSS Examples

Text

The CSS property to change the color of the text to HunterLab 62.5436, 32.4012, 11.3512 is called "color". The color property can be set on classes, ids or directly on the HTML element.

This example shows how text in the color `rgb(236, 141, 151)` looks like.

```
.text, #text, p{  
    color:rgb(236, 141, 151)  
}
```

If you want to add a text shadow in that color use the text-shadow property, you can generate a text shadow directly with our [CSS Text Shadow Generator](#).

Here you see how black text with a 4 pixel rgb(236, 141, 151) colored shadow looks like.

```
.shadow{ text-shadow: 4px 4px 2px rgb(236, 141, 151) }
```

Border

The CSS property to change the border of an element to HunterLab 62.5436, 32.4012, 11.3512 is called "border". The border property can be set on classes, ids or directly on the HTML element.

This example shows the color as border, it can be applied via the CSS property "border" or "border-color".

```
.border, #border, table{ border:4px solid rgb(236, 141, 151) }
```


If only the border color should be changed use the property `border-color`.

```
.border{ border-color:rgb(236, 141, 151) }
```

If you want to add a box shadow in that color use:

Here you see how a box with a 4 pixel `rgb(236, 141, 151)` colored shadow looks like.

```
.boxshadow{ -moz-box-shadow:4px 4px 4px  
4px rgb(236, 141, 151); -webkit-box-  
shadow:4px 4px 4px 4px rgb(236, 141, 151);  
box-shadow:4px 4px 4px 4px rgb(236, 141,  
151) }
```

Background

The CSS property to change the background color of an element to HunterLab 62.5436, 32.4012, 11.3512 is called "background". The background property can be set on classes, ids or directly on the HTML element.

```
.background, #background, body{  
background: rgb(236, 141, 151) }
```

If only the background color should be changed can be used:

```
.background{ background-color: rgb(236,  
141, 151) }
```

This example shows the color as background, it is applied via the CSS property "background".

To optimize and compress your CSS code, you can use our [online CSS compressor and optimizer](#) based on csstidy. If you want to create a linear or radial gradient as background or border, check our [CSS Gradient Generator](#).

Hey! You found this booklet interesting? Support Converting Colors with the new Membership Option!

The pro membership hides all ads, plus gives you double the colors in the color bucket, and more awesome pro features!

[Learn more, Memberships starting at \\$2.50/m!](#)

**Follow me
on Twitter!**

@ConvertingColor