

Converting Colors

HunterLab(62.5673, 5.8574,
9.4558)

Have a look what the booklet for
HunterLab(62.5673, 5.8574, 9.4558)
contains.

HunterLab(62.5002, 6.0052, 9.1999)	3
<i>Conversions</i>	4
<i>Details</i>	6
<i>Harmonies</i>	12
<i>Previews</i>	24
<i>Color Blindness Simulation</i>	28
<i>CSS Examples</i>	31

Color

**HunterLab(62.5002, 6.0052,
9.1999)**

Conversions

Conversions Part 1

Format	Color
Hex	C0A19B
RGB	192, 161, 155
RGB Percent	75%, 63%, 61%
CMY	0.2471, 0.3686, 0.3922
CMYK	0.00, 0.16, 0.19, 0.25
HSL	10°, 23%, 68%
HSV	10°, 19%, 75%
XYZ	40.3995, 39.0628, 36.4209
YIQ	169.5850, 20.4020, 4.7060

Conversions

Conversions Part 2

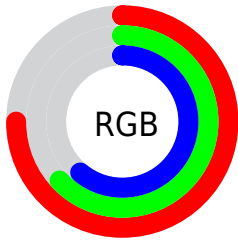
Format	Color
RYB	192, 162, 155
Decimal	12624283
CIELab	68.80, 10.43, 7.37
CIELCh	69, 12.773, 35.236
Yxy	39.0645, 0.3486, 0.3371
Android (android.graphics.Color)	4290814363 (0xFFC0A19B)
YUV	169.5850, -7.1904, 19.6580
Hunter-Lab	62.5002, 6.0052, 9.1999

Details

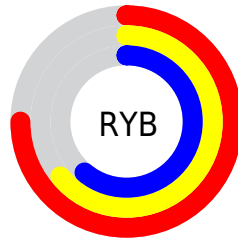
The HunterLab color $62.5002, 6.0052, 9.1999$ is a light color, and the websafe version is hex $CC9999$. A complement of this color would be $67.7429, -11.5955, -2.1069$, and the grayscale version is $63.2542, -3.3751, 3.4367$.

A 20% lighter version of the original color is $85.9389, 5.6592, 11.4378$, and $41.6414, 6.2093, 7.1205$ is the 20% darker color. If you saturate the color by 10%, you get $57.6236, 11.5469, 11.8196$, and if you desaturate by 10%, it is $67.6387, 0.7517, 6.4999$.

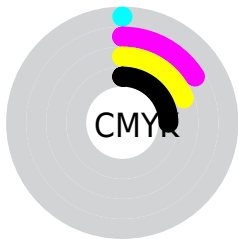
Distribution



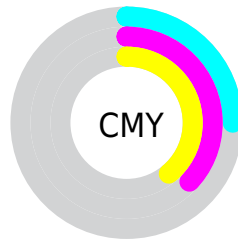
- Red (75%)
- Green (63%)
- Blue (61%)



- Red (75%)
- Yellow (64%)
- Blue (61%)



- Cyan (0%)
- Magenta (16%)
- Yellow (19%)
- Black (25%)



- Cyan (25%)
- Magenta (37%)
- Yellow (39%)

Brightness & Saturation Gradients

These gradients show how the HunterLab color 62.5002, 6.0052, 9.1999 changes by changing the brightness by 10 percent. The first figure shows a shift by +10% for each color and the second figure -10%.

Similar to the brightness gradients but the following saturation gradients show a change of the HunterLab color 62.5002, 6.0052, 9.1999 by changing the saturation by 10% instead.

■ 62.5002, 6.0052,
9.1999

■ 62.5002, 6.0052,
9.1999

184.9769, 3.3378,
18.6160

■ 51.7783, 6.0410,
8.2273

■ 85.8702, 5.7424,
11.1838

■ 41.7499, 6.0074,
7.2618

■ 98.4497, 5.5305,
12.1966

■ 32.4683, 5.8920,
6.2993

111.5898, 5.2700,
13.2250

■ 23.9994, 5.6807,
5.3312

125.2674, 4.9640,
14.2697

■ 16.4302, 5.3529,
4.3423

139.4623, 4.6155,
15.3308

■ 9.8841, 4.8770,
3.6478

154.1562, 4.2270,

0.0000, INF, NaN

16.4089

0.0000, NaN, NaN

169.3327, 3.8004,
17.5039

0.0000, NaN, NaN

■ 62.5002, 6.0052,
9.1999

■ 62.5002, 6.0052,
9.1999

■ 57.6236, 11.5469,
11.8196

■ 67.6387, 0.7517,
6.4999

■ 53.0459, 17.3885,
14.3176

■ 73.0011, -4.2287,
3.7419

■ 48.8178, 23.5022,
16.6381

■ 78.5610, -8.9662,
0.9430

■ 44.9970, 29.8089,
18.7017

■ 84.2957, -13.4901,
-1.8866

■ 41.6475, 36.1486,
20.4052

■ 90.1864, -17.8285,
-4.7407

■ 38.8349, 42.2581,
21.6318

■ 94.8401, -23.7796,
-1.1210

■ 36.6155, 47.7740,
22.2811

■ 35.0148, 52.2603,
22.4227

■ 34.9207, 52.5312,
22.4376

Harmonies

Analogous

The Analogous color harmony consists of three colors that are next to each other on the color wheel.



62.5016, 8.1216, 4.3595



62.5002, 6.0052, 9.1999



62.5016, 1.3867, 12.2629

Triad

The Triadic color harmony groups three colors that are evenly spaced from another and form a triangle on the color wheel.



62.5016, 6.0032, 9.2009



62.5016, -13.1156, 7.6716



62.5016, -2.3206, -8.0713

Complementary

The Complementary color scheme is a pair of colors which are on the opposite of each other on the color wheel.



62.5002, 6.0052, 9.1999



67.7429, -11.5955, -2.1069

Split Complementary

Split-complementary colors differ from the complementary color scheme. The scheme consists of three colors, the original color and two neighbors of the complement color.



62.5016, -7.9270, -6.9822



62.5002, 6.0052, 9.1999



62.5016, -14.0277, 2.4294

Square

The Square scheme is like the rectangle color scheme, but the four colors are evenly spaced on the color wheel.



62.5016, 6.0032, 9.2009



62.5016, -9.6235, 11.4378



62.5016, -12.1614, -3.0117



62.5016, 3.2055, -5.8662

Rectangle

The Rectangle color scheme consists of four colors that form a rectangle on the color wheel.



62.5002, 6.0052, 9.1999



62.5016, -2.4123, 13.0496



62.5016, -12.1614, -3.0117



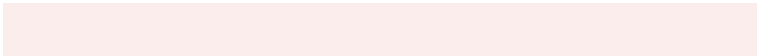
62.5016, -4.2589, -8.0803

Sweetspot

The Sweet Spot groups the original color and five complimentary colors.



62.5016, 6.0032, 9.2009



93.3076, -1.1540, 7.5781



61.8175, 14.1666, -6.4567



43.0001, -0.3282, 3.6226



98.8636, -5.2751, 5.3714



45.2661, -2.4153, 2.4594

Same Dimension

The Same Dimension uses a secret algorithm to generate beautiful new colors.



62.5016, 6.0032, 9.2009



81.3963, 11.0903, 13.8456



67.7006, -3.0317, 14.5054



32.1497, 0.3827, 3.1054



28.7794, 42.6615, 18.4806



6.6527, 6.8820, 4.2198

Inverse Universe

The Inverse Universe completely reimagines the original color for something new.



67.7429, -11.5955, -2.1069



89.8978, -17.5072, -4.5069



62.2588, -2.7975, -9.1768



33.3784, -3.7316, 0.4570



44.4665, -17.5699, -17.6508



9.6454, -4.1756, -3.0420

Previews

White Background



This preview shows how the HunterLab color 62.5002, 6.0052, 9.1999 looks on a white background.

Color Contrast Check

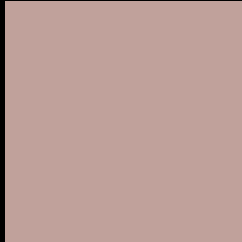
Large Text (above 18pt) WCAG AA × Fail

Any Text WCAG AA × Fail

Large Text (above 18pt) WCAG AAA × Fail

Any Text WCAG AAA × Fail

Black Background



This preview shows how the HunterLab color 62.5002, 6.0052, 9.1999 looks on a black background.

Color Contrast Check

Large Text (above 18pt) WCAG AA ✓ Pass

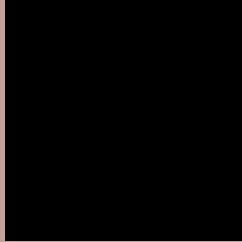
Any Text WCAG AA ✓ Pass

Large Text (above 18pt) WCAG AAA ✓ Pass

Any Text WCAG AAA ✓ Pass

If you want to check with other color combinations, try the [Color Contrast Checker](#).

HunterLab 62.5002, 6.0052, 9.1999 Background



This preview shows how black text looks on a background with the HunterLab color 62.5002, 6.0052, 9.1999.



This preview shows how white text looks on a background with the HunterLab color 62.5002, 6.0052,

Color Blindness Simulation

Color vision deficiency is a very complex topic, and I could not describe the different causes any better than Wikipedia does, so if you want to learn more, you should check out their [article about color blindness](#).

Dichromacy



Original Color

62.5002, 6.0052, 9.1999

Protanopia

62.4422, -2.8641, 7.7117

Deuteranopia

62.4708, 4.4636, 9.1410



Tritanopia

62.6146, 10.1482, 2.2781

Trichromacy



Original Color

62.5002, 6.0052, 9.1999

Protanomaly

62.4883, 0.2316, 8.2434

Deuteranomaly

62.5735, 4.8075, 9.2585

Tritanomaly

62.6065, 8.3468, 5.0123

Monochromacy



Original Color

62.5002, 6.0052, 9.1999

Achromatopsia

63.4017, -3.3830, 3.4447

Achromatomaly

63.1023, -0.1921, 5.4333

CSS Examples

Text

The CSS property to change the color of the text to HunterLab 62.5002, 6.0052, 9.1999 is called "color". The color property can be set on classes, ids or directly on the HTML element.

This example shows how text in the color `rgb(192, 161, 155)` looks like.

```
.text, #text, p{  
    color:rgb(192, 161, 155)  
}
```

If you want to add a text shadow in that color use the text-shadow property, you can generate a text shadow directly with our [CSS Text Shadow Generator](#).

Here you see how black text with a 4 pixel rgb(192, 161, 155) colored shadow looks like.

```
.shadow{ text-shadow: 4px 4px 2px rgb(192, 161, 155) }
```

Border

The CSS property to change the border of an element to HunterLab 62.5002, 6.0052, 9.1999 is called "border". The border property can be set on classes, ids or directly on the HTML element.

This example shows the color as border, it can be applied via the CSS property "border" or "border-color".

```
.border, #border, table{ border:4px solid rgb(192, 161, 155) }
```


If only the border color should be changed use the property `border-color`.

```
.border{ border-color:rgb(192, 161, 155) }
```

If you want to add a box shadow in that color use:

Here you see how a box with a 4 pixel `rgb(192, 161, 155)` colored shadow looks like.

```
.boxshadow{ -moz-box-shadow:4px 4px 4px  
4px rgb(192, 161, 155); -webkit-box-  
shadow:4px 4px 4px 4px rgb(192, 161, 155);  
box-shadow:4px 4px 4px 4px rgb(192, 161,  
155) }
```

Background

The CSS property to change the background color of an element to HunterLab 62.5002, 6.0052, 9.1999 is called "background". The background property can be set on classes, ids or directly on the HTML element.

```
.background, #background, body{  
background: rgb(192, 161, 155) }
```

If only the background color should be changed can be used:

```
.background{ background-color: rgb(192,  
161, 155) }
```

This example shows the color as background, it is applied via the CSS property "background".

To optimize and compress your CSS code, you can use our [online CSS compressor and optimizer](#) based on csstidy. If you want to create a linear or radial gradient as background or border, check our [CSS Gradient Generator](#).

Hey! You found this booklet interesting? Support Converting Colors with the new Membership Option!

The pro membership hides all ads, plus gives you double the colors in the color bucket, and more awesome pro features!

[Learn more, Memberships starting at \\$2.50/m!](#)

**Follow me
on Twitter!**

@ConvertingColor