

Converting Colors

HunterLab(62.5771, 2.5790,
3.1138)

Have a look what the booklet for
HunterLab(62.5771, 2.5790, 3.1138)
contains.

HunterLab(62.5450, 2.5900, 3.0027)	3
<i>Conversions</i>	4
<i>Details</i>	6
<i>Harmonies</i>	12
<i>Previews</i>	24
<i>Color Blindness Simulation</i>	28
<i>CSS Examples</i>	31

Color

**HunterLab(62.5450, 2.5900,
3.0027)**

Conversions

Conversions Part 1

Format	Color
Hex	B4A4A9
RGB	180, 164, 169
RGB Percent	71%, 64%, 66%
CMY	0.2941, 0.3568, 0.3373
CMYK	0.00, 0.09, 0.06, 0.29
HSL	341°, 10%, 67%
HSV	341°, 9%, 71%
XYZ	39.2593, 39.1188, 43.0175
YIQ	169.3540, 7.9310, 4.9470

Conversions

Conversions Part 2

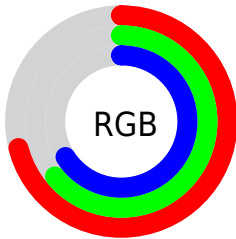
Format	Color
RYB	180, 164, 169
Decimal	11838633
CIELab	68.84, 6.69, -0.48
CIElCh	69, 6.705, 355.874
Yxy	39.1205, 0.3234, 0.3222
Android (android.graphics.Color)	4290028713 (0xFFB4A4A9)
YUV	169.3540, -0.1745, 9.3365
Hunter-Lab	62.5450, 2.5900, 3.0027

Details

The HunterLab color $62.5450, 2.5900, 3.0027$ is a light color, and the websafe version is hex 999999 . A complement of this color would be $66.0539, -9.2020, 4.1347$, and the grayscale version is $63.1343, -3.3687, 3.4302$.

A 20% lighter version of the original color is $85.9522, 1.9708, 4.3523$, and $41.6950, 3.0550, 1.8141$ is the 20% darker color. If you saturate the color by 10%, you get $57.1699, 9.7188, 2.4913$, and if you desaturate by 10%, it is $68.2003, -4.3709, 3.7663$.

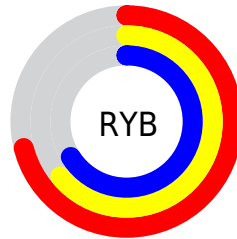
Distribution



Red (71%)

Green (64%)

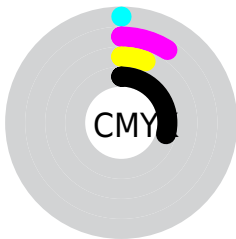
Blue (66%)



Red (71%)

Yellow (64%)

Blue (66%)

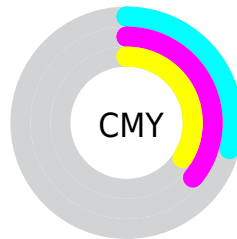


Cyan (0%)

Magenta (9%)

Yellow (6%)

Black (29%)



Cyan (29%)

Magenta (36%)

Yellow (34%)

Brightness & Saturation Gradients

These gradients show how the HunterLab color 62.5450, 2.5900, 3.0027 changes by changing the brightness by 10 percent. The first figure shows a shift by +10% for each color and the second figure -10%.

Similar to the brightness gradients but the following saturation gradients show a change of the HunterLab color 62.5450, 2.5900, 3.0027 by changing the saturation by 10% instead.

■ 62.5450, 2.5900,
3.0027

■ 62.5450, 2.5900,
3.0027

185.0412, -1.4512,
9.4979

■ 51.8203, 2.8144,
2.4441

■ 85.9199, 1.9790,
4.2316

■ 41.7890, 2.9803,
1.9239

■ 98.5018, 1.6043,
4.8958

■ 32.5043, 3.0783,
1.4465

111.6440, 1.1873,
5.5914

■ 24.0319, 3.0970,
1.0159

125.3238, 0.7307,
6.3170

■ 16.4589, 3.0203,
0.6378

139.5208, 0.2367,
7.0715

■ 9.9083, 2.8218,
0.3207

154.2166, -0.2927,

0.0000, INF, NaN

7.8537

0.0000, NaN, NaN

169.3951, -0.8558,
8.6628

0.0000, NaN, NaN

■ 62.5450, 2.5900,
3.0027

■ 62.5450, 2.5900,
3.0027

■ 57.1699, 9.7188,
2.4913

■ 68.2003, -4.3709,
3.7663

■ 52.1191, 17.0004,
2.2851

■ 74.0933, -11.1628,
4.7336

■ 47.4536, 24.3670,
2.4515

■ 80.1943, -17.8029,
5.8694

■ 43.2459, 31.6749,
3.0624

■ 86.4788, -24.3110,
7.1456

■ 39.5795, 38.6643,
4.1818

■ 92.9265, -30.7072,
8.5398

■ 36.5425, 44.9336,
5.8401

■ 93.6539, -28.9519,
3.3876

■ 34.2119, 49.9702,
7.9978

■ 94.0444, -26.7180,
-2.1632

■ 32.6279, 53.2889,
10.5147

■ 31.6991, 54.8841,
13.1052

Harmonies

Analogous

The Analogous color harmony consists of three colors that are next to each other on the color wheel.



62.5464, 1.5649, 0.2087



62.5450, 2.5900, 3.0027



62.5464, 1.9983, 5.7795

Triad

The Triadic color harmony groups three colors that are evenly spaced from another and form a triangle on the color wheel.



62.5464, 2.5883, 3.0038



62.5464, -5.8676, 8.1973



62.5464, -6.5817, -1.3685

Complementary

The Complementary color scheme is a pair of colors which are on the opposite of each other on the color wheel.



62.5450, 2.5900, 3.0027



66.0539, -9.2020, 4.1347

Split Complementary

Split-complementary colors differ from the complementary color scheme. The scheme consists of three colors, the original color and two neighbors of the complement color.



62.5464, -8.5064, 0.9327



62.5450, 2.5900, 3.0027



62.5464, -8.0996, 6.4402

Square

The Square scheme is like the rectangle color scheme, but the four colors are evenly spaced on the color wheel.



62.5464, 2.5883, 3.0038



62.5464, -2.9202, 8.6934



62.5464, -9.0567, 3.8027



62.5464, -3.7601, -2.3907

Rectangle

The Rectangle color scheme consists of four colors that form a rectangle on the color wheel.



62.5450, 2.5900, 3.0027



62.5464, 0.7754, 7.2606



62.5464, -9.0567, 3.8027



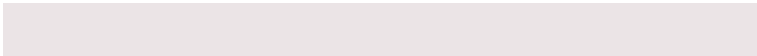
62.5464, -7.3529, -0.7137

Sweetspot

The Sweet Spot groups the original color and five complimentary colors.



62.5464, 2.5883, 3.0038



88.6228, -2.0114, 4.6072



62.4134, 2.8278, -2.5113



40.9173, -0.5870, 2.1032



95.4677, -5.0939, 5.1869



42.2927, -2.2566, 2.2978

Same Dimension

The Same Dimension uses a secret algorithm to generate beautiful new colors.



62.5464, 2.5883, 3.0038



82.5205, 5.6747, 3.8536



63.2442, 0.3303, 6.0486



29.2362, 1.3561, 1.3965



26.4272, 46.0584, 10.8677



4.8015, 8.5862, 0.2845

Inverse Universe

The Inverse Universe completely reimagines the original color for something new.



62.5464, 2.5883, 3.0038



82.5205, 5.6747, 3.8536



65.3143, -6.9373, 0.9271



29.2362, 1.3561, 1.3965



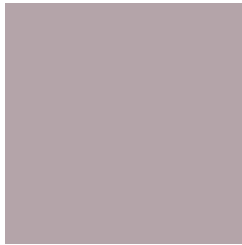
26.4272, 46.0584, 10.8677



4.8015, 8.5862, 0.2845

Previews

White Background



This preview shows how the HunterLab color 62.5450, 2.5900, 3.0027 looks on a white background.

Color Contrast Check

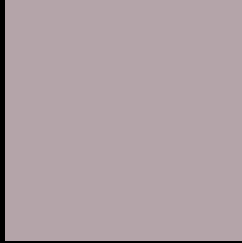
Large Text (above 18pt) WCAG AA × Fail

Any Text WCAG AA × Fail

Large Text (above 18pt) WCAG AAA × Fail

Any Text WCAG AAA × Fail

Black Background



This preview shows how the HunterLab color 62.5450, 2.5900, 3.0027 looks on a black background.

Color Contrast Check

Large Text (above 18pt) WCAG AA ✓ Pass

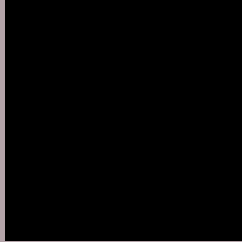
Any Text WCAG AA ✓ Pass

Large Text (above 18pt) WCAG AAA ✓ Pass

Any Text WCAG AAA ✓ Pass

If you want to check with other color combinations, try the [Color Contrast Checker](#).

HunterLab 62.5450, 2.5900, 3.0027 Background



This preview shows how black text looks on a background with the HunterLab color 62.5450, 2.5900, 3.0027.



This preview shows how white text looks on a background with the HunterLab color 62.5450, 2.5900,

Color Blindness Simulation

Color vision deficiency is a very complex topic, and I could not describe the different causes any better than Wikipedia does, so if you want to learn more, you should check out their [article about color blindness](#).

Dichromacy



Original Color

62.5450, 2.5900, 3.0027

Protanopia

62.5490, -1.7398, 1.9913

Deuteranopia

62.6493, 4.4051, 3.1579



Tritanopia

62.5721, 4.5777, -0.2830

Trichromacy



Original Color

62.5450, 2.5900, 3.0027

Protanomaly

62.5886, -0.1649, 2.5381

Deuteranomaly

62.5510, 4.0751, 3.0357

Tritanomaly

62.4782, 4.0746, 1.0524

Monochromacy



Original Color

62.5450, 2.5900, 3.0027

Achromatopsia

62.9885, -3.3609, 3.4223

Achromatomaly

62.7585, -1.1384, 3.1899

CSS Examples

Text

The CSS property to change the color of the text to HunterLab 62.5450, 2.5900, 3.0027 is called "color". The color property can be set on classes, ids or directly on the HTML element.

This example shows how text in the color `rgb(180, 164, 169)` looks like.

```
.text, #text, p{  
    color:rgb(180, 164, 169)  
}
```

If you want to add a text shadow in that color use the text-shadow property, you can generate a text shadow directly with our [CSS Text Shadow Generator](#).

Here you see how black text with a 4 pixel rgb(180, 164, 169) colored shadow looks like.

```
.shadow{ text-shadow: 4px 4px 2px rgb(180, 164, 169) }
```

Border

The CSS property to change the border of an element to HunterLab 62.5450, 2.5900, 3.0027 is called "border". The border property can be set on classes, ids or directly on the HTML element.

This example shows the color as border, it can be applied via the CSS property "border" or "border-color".

```
.border, #border, table{ border:4px solid rgb(180, 164, 169) }
```


If only the border color should be changed use the property `border-color`.

```
.border{ border-color:rgb(180, 164, 169) }
```

If you want to add a box shadow in that color use:

Here you see how a box with a 4 pixel `rgb(180, 164, 169)` colored shadow looks like.

```
.boxshadow{ -moz-box-shadow:4px 4px 4px  
4px rgb(180, 164, 169); -webkit-box-  
shadow:4px 4px 4px 4px rgb(180, 164, 169);  
box-shadow:4px 4px 4px 4px rgb(180, 164,  
169) }
```

Background

The CSS property to change the background color of an element to HunterLab 62.5450, 2.5900, 3.0027 is called "background". The background property can be set on classes, ids or directly on the HTML element.

```
.background, #background, body{  
background: rgb(180, 164, 169) }
```

If only the background color should be changed can be used:

```
.background{ background-color: rgb(180,  
164, 169) }
```

This example shows the color as background, it is applied via the CSS property "background".

To optimize and compress your CSS code, you can use our [online CSS compressor and optimizer](#) based on csstidy. If you want to create a linear or radial gradient as background or border, check our [CSS Gradient Generator](#).

Hey! You found this booklet interesting? Support Converting Colors with the new Membership Option!

The pro membership hides all ads, plus gives you double the colors in the color bucket, and more awesome pro features!

[Learn more, Memberships starting at \\$2.50/m!](#)

**Follow me
on Twitter!**

@ConvertingColor