

Converting Colors

HunterLab(62.5801, 5.0481,
7.5735)

Have a look what the booklet for
HunterLab(62.5801, 5.0481, 7.5735)
contains.

HunterLab(62.5801, 5.0481, 7.5735)	3
<i>Conversions</i>	4
<i>Details</i>	6
<i>Harmonies</i>	12
<i>Previews</i>	24
<i>Color Blindness Simulation</i>	28
<i>CSS Examples</i>	31

Color

**HunterLab(62.5801, 5.0481,
7.5735)**

Conversions

Conversions Part 1

Format	Color
Hex	BDA29F
RGB	189, 162, 159
RGB Percent	74%, 64%, 62%
CMY	0.2588, 0.3647, 0.3765
CMYK	0.00, 0.14, 0.16, 0.26
HSL	6°, 19%, 68%
HSV	6°, 16%, 74%
XYZ	40.1646, 39.1627, 38.2432
YIQ	169.7310, 17.0550, 4.7910

Conversions

Conversions Part 2

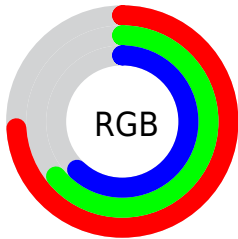
Format	Color
R_{YB}	189, 162, 159
Decimal	12427935
CIE Lab	68.87, 9.39, 5.22
CIE LCh	69, 10.742, 29.048
Yxy	39.1644, 0.3416, 0.3331
Android (android.graphics.Color)	4290618015 (0xFFBDA29F)
YUV	169.7310, -5.2904, 16.8989
Hunter-Lab	62.5801, 5.0481, 7.5735

Details

The HunterLab color $62.5801, 5.0481, 7.5735$ is a light color, and the websafe version is hex $CC9999$. A complement of this color would be $67.9425, -11.0729, -0.3412$, and the grayscale version is $63.3079, -3.3780, 3.4396$.

A 20% lighter version of the original color is $86.0660, 4.8435, 9.2922$, and $41.6959, 5.2648, 5.6111$ is the 20% darker color. If you saturate the color by 10%, you get $57.4153, 10.9858, 9.9099$, and if you desaturate by 10%, it is $68.0254, -0.6092, 5.2407$.

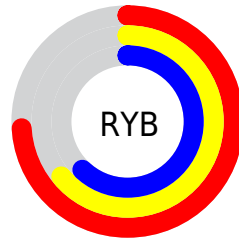
Distribution



Red (74%)

Green (64%)

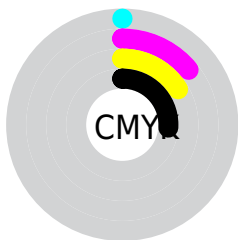
Blue (62%)



Red (74%)

Yellow (64%)

Blue (62%)

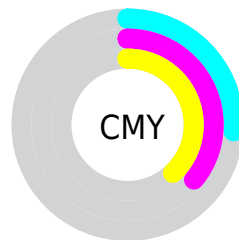


Cyan (0%)

Magenta (14%)

Yellow (16%)

Black (26%)



Cyan (26%)

Magenta (36%)

Yellow (38%)

Brightness & Saturation Gradients

These gradients show how the HunterLab color 62.5801, 5.0481, 7.5735 changes by changing the brightness by 10 percent. The first figure shows a shift by +10% for each color and the second figure -10%.

Similar to the brightness gradients but the following saturation gradients show a change of the HunterLab color 62.5801, 5.0481, 7.5735 by changing the saturation by 10% instead.

■ 62.5801, 5.0481,
7.5735

■ 62.5801, 5.0481,
7.5735

185.0916, 1.9983,
16.1697

■ 51.8533, 5.1363,
6.7185

■ 85.9590, 4.6885,
9.3441

■ 41.8197, 5.1580,
5.8800

■ 98.5426, 4.4313,
10.2588

■ 32.5325, 5.1017,
5.0566

111.6867, 4.1272,
11.1938

■ 24.0575, 4.9540,
4.2438

125.3681, 3.7794,
12.1490

■ 16.4814, 4.6954,
3.4330

139.5667, 3.3904,
13.1243

■ 9.9273, 4.2953,
2.7412

154.2641, 2.9626,

0.0000, INF, NaN

14.1197

0.0000, NaN, NaN

169.4441, 2.4980,
15.1349

0.0000, NaN, NaN

■ 62.5801, 5.0481,
7.5735

■ 62.5801, 5.0481,
7.5735

■ 57.4153, 10.9858,
9.9099

■ 68.0254, -0.6092,
5.2407

■ 52.5735, 17.2134,
12.2238

■ 73.7089, -6.0023,
2.9199

■ 48.1133, 23.6956,
14.4749

■ 79.6015, -11.1622,
0.6165

■ 44.1025, 30.3339,
16.5955

■ 85.6783, -16.1196,
-1.6688

■ 40.6174, 36.9301,
18.4848

■ 91.9191, -20.9033,
-3.9375

■ 37.7363, 43.1597,
20.0119

■ 94.6356, -24.5325,
-1.3881

■ 35.5257, 48.5851,
21.0409

■ 34.0179, 52.7450,
21.4947

■ 33.5887, 53.9782,
21.6422

Harmonies

Analogous

The Analogous color harmony consists of three colors that are next to each other on the color wheel.



62.5815, 6.2870, 3.2584



62.5801, 5.0481, 7.5735



62.5815, 1.5412, 10.5668

Triad

The Triadic color harmony groups three colors that are evenly spaced from another and form a triangle on the color wheel.



62.5815, 5.0462, 7.5745



62.5815, -11.1638, 7.8122



62.5815, -3.4979, -6.1590

Complementary

The Complementary color scheme is a pair of colors which are on the opposite of each other on the color wheel.



62.5801, 5.0481, 7.5735



67.9425, -11.0729, -0.3412

Split Complementary

Split-complementary colors differ from the complementary color scheme. The scheme consists of three colors, the original color and two neighbors of the complement color.



62.5815, -8.0810, -4.7147



62.5801, 5.0481, 7.5735



62.5815, -12.4229, 3.5542

Square

The Square scheme is like the rectangle color scheme, but the four colors are evenly spaced on the color wheel.



62.5815, 5.0462, 7.5745



62.5815, -7.8196, 10.6965



62.5815, -11.3114, -1.0695



62.5815, 1.2640, -4.8820

Rectangle

The Rectangle color scheme consists of four colors that form a rectangle on the color wheel.



62.5801, 5.0481, 7.5735



62.5815, -1.5555, 11.5277



62.5815, -11.3114, -1.0695



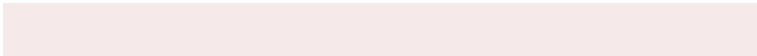
62.5815, -5.1097, -5.9740

Sweetspot

The Sweet Spot groups the original color and five complimentary colors.



62.5815, 5.0462, 7.5745



91.6287, -1.3997, 6.7666



62.5786, 10.9955, -5.2603



42.2476, -0.4089, 3.2394



97.7295, -5.2146, 5.3098



44.2712, -2.3622, 2.4053

Same Dimension

The Same Dimension uses a secret algorithm to generate beautiful new colors.



62.5815, 5.0462, 7.5745



81.3343, 9.4369, 11.2101



66.9080, -2.4601, 12.1185



31.1222, 0.6249, 2.8492



27.6492, 43.9525, 17.8067



5.9299, 7.2728, 3.7813

Inverse Universe

The Inverse Universe completely reimagines the original color for something new.



67.9425, -11.0729, -0.3412



90.0166, -16.7029, -1.6180



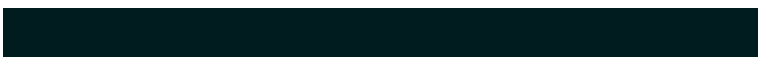
63.3809, -3.7652, -6.0479



32.6218, -3.8763, 0.6369



46.7964, -21.2690, -12.5777



9.5159, -4.5271, -2.1214

Previews

White Background



This preview shows how the HunterLab color 62.5801, 5.0481, 7.5735 looks on a white background.

Color Contrast Check

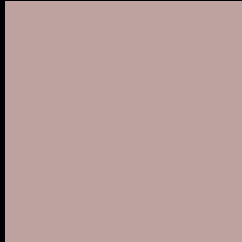
Large Text (above 18pt) WCAG AA × Fail

Any Text WCAG AA × Fail

Large Text (above 18pt) WCAG AAA × Fail

Any Text WCAG AAA × Fail

Black Background



This preview shows how the HunterLab color 62.5801, 5.0481, 7.5735 looks on a black background.

Color Contrast Check

Large Text (above 18pt) WCAG AA ✓ Pass

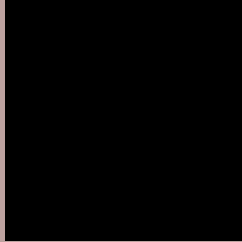
Any Text WCAG AA ✓ Pass

Large Text (above 18pt) WCAG AAA ✓ Pass

Any Text WCAG AAA ✓ Pass

If you want to check with other color combinations, try the [Color Contrast Checker](#).

HunterLab 62.5801, 5.0481, 7.5735 Background



This preview shows how black text looks on a background with the HunterLab color 62.5801, 5.0481, 7.5735.



This preview shows how white text looks on a background with the HunterLab color 62.5801, 5.0481,

7.5735.

Color Blindness Simulation

Color vision deficiency is a very complex topic, and I could not describe the different causes any better than Wikipedia does, so if you want to learn more, you should check out their [article about color blindness](#).

Dichromacy



Original Color

62.5801, 5.0481, 7.5735

Protanopia

62.5542, -2.2519, 6.1075

Deuteranopia

62.4782, 4.7070, 7.4541



Tritanopia

62.6071, 8.7674, 1.7699

Trichromacy



Original Color

62.5801, 5.0481, 7.5735

Protanomaly

62.5037, 0.5066, 6.5389

Deuteranomaly

62.4782, 4.7070, 7.4541

Tritanomaly

62.6314, 7.1175, 4.1090

Monochromacy



Original Color

62.5801, 5.0481, 7.5735

Achromatopsia

63.4017, -3.3830, 3.4447

Achromatomaly

63.0379, -0.3552, 4.9059

CSS Examples

Text

The CSS property to change the color of the text to HunterLab 62.5801, 5.0481, 7.5735 is called "color". The color property can be set on classes, ids or directly on the HTML element.

This example shows how text in the color `rgb(189, 162, 159)` looks like.

```
.text, #text, p{  
    color:rgb(189, 162, 159)  
}
```

If you want to add a text shadow in that color use the text-shadow property, you can generate a text shadow directly with our [CSS Text Shadow Generator](#).

Here you see how black text with a 4 pixel rgb(189, 162, 159) colored shadow looks like.

```
.shadow{ text-shadow: 4px 4px 2px rgb(189, 162, 159) }
```

Border

The CSS property to change the border of an element to HunterLab 62.5801, 5.0481, 7.5735 is called "border". The border property can be set on classes, ids or directly on the HTML element.

This example shows the color as border, it can be applied via the CSS property "border" or "border-color".

```
.border, #border, table{ border:4px solid rgb(189, 162, 159) }
```


If only the border color should be changed use the property `border-color`.

```
.border{ border-color:rgb(189, 162, 159) }
```

If you want to add a box shadow in that color use:

Here you see how a box with a 4 pixel `rgb(189, 162, 159)` colored shadow looks like.

```
.boxshadow{ -moz-box-shadow:4px 4px 4px  
4px rgb(189, 162, 159); -webkit-box-  
shadow:4px 4px 4px 4px rgb(189, 162, 159);  
box-shadow:4px 4px 4px 4px rgb(189, 162,  
159) }
```

Background

The CSS property to change the background color of an element to HunterLab 62.5801, 5.0481, 7.5735 is called "background". The background property can be set on classes, ids or directly on the HTML element.

```
.background, #background, body{  
background: rgb(189, 162, 159) }
```

If only the background color should be changed can be used:

```
.background{ background-color: rgb(189,  
162, 159) }
```

This example shows the color as background, it is applied via the CSS property "background".

To optimize and compress your CSS code, you can use our [online CSS compressor and optimizer](#) based on csstidy. If you want to create a linear or radial gradient as background or border, check our [CSS Gradient Generator](#).

Hey! You found this booklet interesting? Support Converting Colors with the new Membership Option!

The pro membership hides all ads, plus gives you double the colors in the color bucket, and more awesome pro features!

[Learn more, Memberships starting at \\$2.50/m!](#)

**Follow me
on Twitter!**

@ConvertingColor