

Converting Colors

HunterLab(62.7135, 10.7524,
12.8899)

Have a look what the booklet for
HunterLab(62.7135, 10.7524,
12.8899) contains.

HunterLab(62.7676, 10.7212, 12.7904)	3
<i>Conversions</i>	4
<i>Details</i>	6
<i>Harmonies</i>	12
<i>Previews</i>	24
<i>Color Blindness Simulation</i>	28
<i>CSS Examples</i>	31

Color

**HunterLab(62.7676, 10.7212,
12.7904)**

Conversions

Conversions Part 1

Format	Color
Hex	CC9E93
RGB	204, 158, 147
RGB Percent	80%, 62%, 58%
CMY	0.2000, 0.3804, 0.4235
CMYK	0.00, 0.23, 0.28, 0.20
HSL	12°, 36%, 69%
HSV	12°, 28%, 80%
XYZ	42.3952, 39.3977, 32.9738
YIQ	170.5000, 30.9470, 6.3310

Conversions

Conversions Part 2

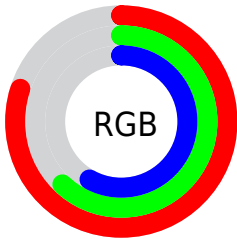
Format	Color
RYB	204, 161, 147
Decimal	13409939
CIELab	69.04, 15.48, 12.31
CIELCh	69, 19.780, 38.494
Yxy	39.3995, 0.3694, 0.3433
Android (android.graphics.Color)	4291600019 (0xFFCC9E93)
YUV	170.5000, -11.5855, 29.3795
Hunter-Lab	62.7676, 10.7212, 12.7904

Details

The HunterLab color $62.7676, 10.7212, 12.7904$ is a light color, and the websafe version is hex $CC9999$. A complement of this color would be $69.7862, -14.6948, -5.7901$, and the grayscale version is $63.6471, -3.3961, 3.4581$.

A 20% lighter version of the original color is $85.4784, 8.2360, 14.4870$, and $41.8834, 10.4909, 10.3265$ is the 20% darker color. If you saturate the color by 10%, you get $57.9394, 16.6376, 15.5858$, and if you desaturate by 10%, it is $67.8934, 5.1248, 9.8288$.

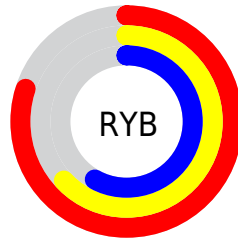
Distribution



Red (80%)

Green (62%)

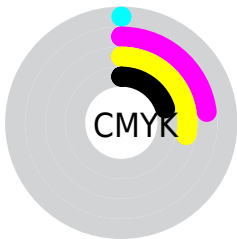
Blue (58%)



Red (80%)

Yellow (63%)

Blue (58%)

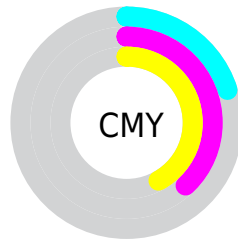


Cyan (0%)

Magenta (23%)

Yellow (28%)

Black (20%)



Cyan (20%)

Magenta (38%)

Yellow (42%)

Brightness & Saturation Gradients

These gradients show how the HunterLab color 62.7676, 10.7212, 12.7904 changes by changing the brightness by 10 percent. The first figure shows a shift by +10% for each color and the second figure -10%.

Similar to the brightness gradients but the following saturation gradients show a change of the HunterLab color 62.7676, 10.7212, 12.7904 by changing the saturation by 10% instead.

■ 62.7676, 10.7212,
12.7904

■ 62.7676, 10.7212,
12.7904

185.3608, 9.8585,
24.1455

■ 52.0295, 10.5127,
11.5375

■ 86.1675, 10.9128,
15.2815

■ 41.9837, 10.2218,
10.2682

■ 98.7608, 10.9143,
16.5268

■ 32.6834, 9.8337,
8.9719

111.9141, 10.8590,
17.7763

■ 24.1939, 9.3317,
7.6302

125.6045, 10.7513,
19.0321

■ 16.6017, 8.6929,
6.2115

139.8117, 10.5945,
20.2959

■ 10.0290, 7.8868,
5.6671

154.5174, 10.3918,

0.0000, INF, NaN

21.5688

0.0000, NaN, NaN

169.7054, 10.1457,
22.8517

0.0000, NaN, NaN

■ 62.7676, 10.7212,
12.7904

■ 62.7676, 10.7212,
12.7904

■ 57.9394, 16.6376,
15.5858

■ 67.8934, 5.1248,
9.8288

■ 53.4511, 22.8687,
18.1505

■ 73.2736, -0.1573,
6.7416

■ 49.3584, 29.3545,
20.4031

■ 78.8774, -5.1531,
3.5603

■ 45.7225, 35.9675,
22.2394

■ 84.6783, -9.8929,
0.3058

■ 42.6076, 42.4850,
23.5436

■ 90.6544, -14.4076,
-3.0074

■ 40.0725, 48.5801,
24.2153

■ 95.6961, -20.6484,
-0.0097

■ 38.1549, 53.8385,
24.2659

■ 37.8335, 54.7623,
24.2716

Harmonies

Analogous

The Analogous color harmony consists of three colors that are next to each other on the color wheel.



62.7691, 14.6247, 5.7910



62.7676, 10.7212, 12.7904



62.7691, 3.0936, 16.8399

Triad

The Triadic color harmony groups three colors that are evenly spaced from another and form a triangle on the color wheel.



62.7691, 10.7188, 12.7914



62.7691, -18.6006, 9.1366



62.7691, -0.7858, -15.0640

Complementary

The Complementary color scheme is a pair of colors which are on the opposite of each other on the color wheel.



62.7676, 10.7212, 12.7904



69.7862, -14.6948, -5.7901

Split Complementary

Split-complementary colors differ from the complementary color scheme. The scheme consists of three colors, the original color and two neighbors of the complement color.



62.7691, -9.5487, -13.8368



62.7676, 10.7212, 12.7904



62.7691, -19.5098, 0.9458

Square

The Square scheme is like the rectangle color scheme, but the four colors are evenly spaced on the color wheel.



62.7691, 10.7188, 12.7914



62.7691, -13.7269, 14.9450



62.7691, -16.2841, -7.6723



62.7691, 7.7426, -10.8223

Rectangle

The Rectangle color scheme consists of four colors that form a rectangle on the color wheel.



62.7676, 10.7212, 12.7904



62.7691, -2.8987, 17.6995



62.7691, -16.2841, -7.6723



62.7691, -3.8051, -15.2881

Sweetspot

The Sweet Spot groups the original color and five complimentary colors.



62.7691, 10.7188, 12.7914



94.1797, -0.0943, 8.7417



61.3026, 23.8178, -10.9163



43.0749, 0.4247, 4.3283

0.0000, NaN, NaN



46.2646, -2.4686, 2.5136

Same Dimension

The Same Dimension uses a secret algorithm to generate beautiful new colors.



62.7691, 10.7188, 12.7914



76.6891, 18.6993, 18.8285



70.7397, -3.3885, 20.3938



33.9977, 0.2780, 3.3761



30.1877, 42.9032, 19.3526



7.5970, 7.5871, 4.8140

Inverse Universe

The Inverse Universe completely reimagines the original color for something new.



69.7862, -14.6948, -5.7901



87.6810, -21.2920, -10.3180



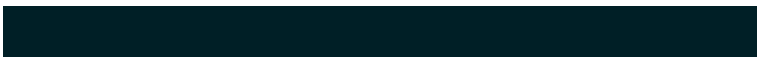
61.2303, -1.0496, -17.6053



35.1349, -3.8127, 0.3707



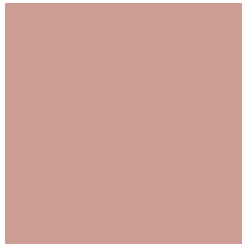
44.4134, -16.0278, -20.9134



10.5571, -4.2657, -3.9870

Previews

White Background



This preview shows how the HunterLab color 62.7676, 10.7212, 12.7904 looks on a white background.

Color Contrast Check

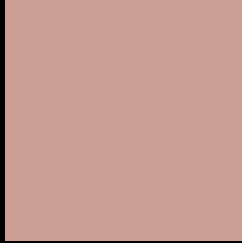
Large Text (above 18pt) WCAG AA × Fail

Any Text WCAG AA × Fail

Large Text (above 18pt) WCAG AAA × Fail

Any Text WCAG AAA × Fail

Black Background



This preview shows how the HunterLab color 62.7676, 10.7212, 12.7904 looks on a black background.

Color Contrast Check

Large Text (above 18pt) WCAG AA ✓ Pass

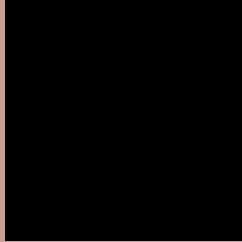
Any Text WCAG AA ✓ Pass

Large Text (above 18pt) WCAG AAA ✓ Pass

Any Text WCAG AAA ✓ Pass

If you want to check with other color combinations, try the [Color Contrast Checker](#).

HunterLab 62.7676, 10.7212, 12.7904 Background



This preview shows how black text looks on a background with the HunterLab color 62.7676, 10.7212, 12.7904.



This preview shows how white text looks on a background with the HunterLab color 62.7676, 10.7212,

Color Blindness Simulation

Color vision deficiency is a very complex topic, and I could not describe the different causes any better than Wikipedia does, so if you want to learn more, you should check out their [article about color blindness](#).

Dichromacy



Original Color

62.7676, 10.7212, 12.7904

Protanopia

62.8509, -3.2751, 10.6484

Deuteranopia

62.6526, 4.6075, 12.9523



Tritanopia

62.7332, 15.8406, 4.3806

Trichromacy



Original Color

62.7676, 10.7212, 12.7904

Protanomaly

62.6035, 1.7296, 11.2793

Deuteranomaly

62.7976, 6.5291, 13.1347

Tritanomaly

62.6850, 13.9155, 7.4134

Monochromacy



Original Color

62.7676, 10.7212, 12.7904

Achromatopsia

63.8154, -3.4050, 3.4672

Achromatomaly

63.2047, 1.4719, 6.9070

CSS Examples

Text

The CSS property to change the color of the text to HunterLab 62.7676, 10.7212, 12.7904 is called "color". The color property can be set on classes, ids or directly on the HTML element.

This example shows how text in the color `rgb(204, 158, 147)` looks like.

```
.text, #text, p{  
    color:rgb(204, 158, 147)  
}
```

If you want to add a text shadow in that color use the text-shadow property, you can generate a text shadow directly with our [CSS Text Shadow Generator](#).

Here you see how black text with a 4 pixel rgb(204, 158, 147) colored shadow looks like.

```
.shadow{ text-shadow: 4px 4px 2px rgb(204, 158, 147) }
```

Border

The CSS property to change the border of an element to HunterLab 62.7676, 10.7212, 12.7904 is called "border". The border property can be set on classes, ids or directly on the HTML element.

This example shows the color as border, it can be applied via the CSS property "border" or "border-color".

```
.border, #border, table{ border:4px solid rgb(204, 158, 147) }
```


If only the border color should be changed use the property `border-color`.

```
.border{ border-color:rgb(204, 158, 147) }
```

If you want to add a box shadow in that color use:

Here you see how a box with a 4 pixel `rgb(204, 158, 147)` colored shadow looks like.

```
.boxshadow{ -moz-box-shadow:4px 4px 4px  
4px rgb(204, 158, 147); -webkit-box-  
shadow:4px 4px 4px 4px rgb(204, 158, 147);  
box-shadow:4px 4px 4px 4px rgb(204, 158,  
147) }
```

Background

The CSS property to change the background color of an element to HunterLab 62.7676, 10.7212, 12.7904 is called "background". The background property can be set on classes, ids or directly on the HTML element.

```
.background, #background, body{  
background: rgb(204, 158, 147) }
```

If only the background color should be changed can be used:

```
.background{ background-color: rgb(204,  
158, 147) }
```

This example shows the color as background, it is applied via the CSS property "background".

To optimize and compress your CSS code, you can use our [online CSS compressor and optimizer](#) based on csstidy. If you want to create a linear or radial gradient as background or border, check our [CSS Gradient Generator](#).

Hey! You found this booklet interesting? Support Converting Colors with the new Membership Option!

The pro membership hides all ads, plus gives you double the colors in the color bucket, and more awesome pro features!

[Learn more, Memberships starting at \\$2.50/m!](#)

**Follow me
on Twitter!**

@ConvertingColor