

Converting Colors

HunterLab(62.7156, 3.1772,
16.7988)

Have a look what the booklet for
HunterLab(62.7156, 3.1772,
16.7988) contains.

HunterLab(62.8023, 3.1871, 16.7644)	3
<i>Conversions</i>	4
<i>Details</i>	6
<i>Harmonies</i>	12
<i>Previews</i>	24
<i>Color Blindness Simulation</i>	28
<i>CSS Examples</i>	31

Color

**HunterLab(62.8023, 3.1871,
16.7644)**

Conversions

Conversions Part 1

Format	Color
Hex	C2A388
RGB	194, 163, 136
RGB Percent	76%, 64%, 53%
CMY	0.2392, 0.3608, 0.4667
CMYK	0.00, 0.16, 0.30, 0.24
HSL	28°, 32%, 65%
HSV	28°, 30%, 76%
XYZ	39.7893, 39.4413, 28.8084
YIQ	169.1910, 27.1430, -1.8250

Conversions

Conversions Part 2

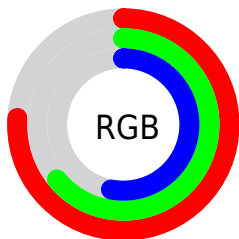
Format	Color
RYB	194, 187, 136
Decimal	12755848
CIELab	69.07, 7.35, 18.28
CIElCh	69, 19.701, 68.085
Yxy	39.4431, 0.3683, 0.3651
Android (android.graphics.Color)	4290945928 (0xFFC2A388)
YUV	169.1910, -16.3632, 21.7575
Hunter-Lab	62.8023, 3.1871, 16.7644

Details

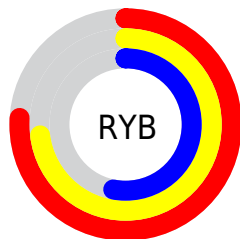
The HunterLab color $62.8023, 3.1871, 16.7644$ is a light color, and the websafe version is hex $CC9999$. A complement of this color would be $60.6347, -6.8752, -12.6648$, and the grayscale version is $63.1261, -3.3683, 3.4298$.

A 20% lighter version of the original color is $86.2126, 2.4257, 20.0567$, and $41.8685, 3.5198, 13.3933$ is the 20% darker color. If you saturate the color by 10%, you get $59.5049, 6.1604, 20.1278$, and if you desaturate by 10%, it is $66.2417, 0.5233, 12.9126$.

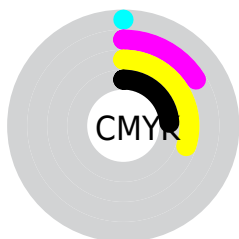
Distribution



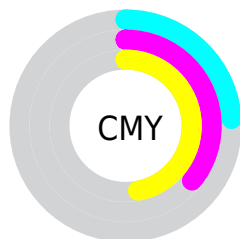
- Red (76%)
- Green (64%)
- Blue (53%)



- Red (76%)
- Yellow (73%)
- Blue (53%)



- Cyan (0%)
- Magenta (16%)
- Yellow (30%)
- Black (24%)



- Cyan (24%)
- Magenta (36%)
- Yellow (47%)

Brightness & Saturation Gradients

These gradients show how the HunterLab color 62.8023, 3.1871, 16.7644 changes by changing the brightness by 10 percent. The first figure shows a shift by +10% for each color and the second figure -10%.

Similar to the brightness gradients but the following saturation gradients show a change of the HunterLab color 62.8023, 3.1871, 16.7644 by changing the saturation by 10% instead.

■ 62.8023, 3.1871,
16.7644

■ 62.8023, 3.1871,
16.7644

185.4106, -0.6178,
30.5459

■ 52.0621, 3.3786,
15.1562

■ 86.2060, 2.6356,
19.8948

■ 42.0140, 3.5102,
13.5007

■ 98.8012, 2.2889,
21.4320

■ 32.7113, 3.5715,
11.7788

■ 111.9562, 1.8989,
22.9585

■ 24.2192, 3.5509,
9.9593

125.6482, 1.4683,
24.4783

■ 16.6240, 3.4311,
7.9915

139.8570, 0.9994,
25.9947

■ 10.0478, 3.1852,
7.0335

154.5642, 0.4943,

0.0000, INF, NaN

27.5102

0.0000, NaN, NaN

169.7537, -0.0453,
29.0267

0.0000, NaN, NaN

■ 62.8023, 3.1871,
16.7644

■ 62.8023, 3.1871,
16.7644

■ 59.5049, 6.1604,
20.1278

■ 66.2417, 0.5233,
12.9126

■ 56.3583, 9.4659,
22.9440

■ 69.8067, -1.8442,
8.6218

■ 53.3784, 13.1098,
25.1565

■ 73.4881, -3.9395,
3.9402

■ 50.5806, 17.0887,
26.7115

■ 77.2762, -5.7846,
-1.0906

■ 47.9804, 21.3815,
27.5676

■ 81.1625, -7.4008,
-6.4339

■ 45.5926, 25.9409,
27.7115

■ 85.1396, -8.8084,
-12.0581

■ 43.4225, 30.6520,
27.2855

■ 88.5650, -13.5587,
-8.9993

■ 43.4010, 30.7005,
27.2810

■ 91.9608, -18.7743,
-4.6594

■ 94.9786, -23.2710,
-0.9405

Harmonies

Analogous

The Analogous color harmony consists of three colors that are next to each other on the color wheel.



62.8037, 10.7431, 12.6843



62.8023, 3.1871, 16.7644



62.8037, -5.7518, 17.5380

Triad

The Triadic color harmony groups three colors that are evenly spaced from another and form a triangle on the color wheel.



62.8037, 3.1849, 16.7653



62.8037, -19.4696, 1.0770



62.8037, 7.5943, -10.8480

Complementary

The Complementary color scheme is a pair of colors which are on the opposite of each other on the color wheel.



62.8023, 3.1871, 16.7644



60.6347, -6.8752, -12.6648

Split Complementary

Split-complementary colors differ from the complementary color scheme. The scheme consists of three colors, the original color and two neighbors of the complement color.



62.8037, -0.9205, -15.0029



62.8023, 3.1871, 16.7644



62.8037, -16.3087, -7.5170

Square

The Square scheme is like the rectangle color scheme, but the four colors are evenly spaced on the color wheel.



62.8037, 3.1849, 16.7653



62.8037, -18.5068, 9.2156



62.8037, -9.6366, -13.7057



62.8037, 13.3864, -2.9898

Rectangle

The Rectangle color scheme consists of four colors that form a rectangle on the color wheel.



62.8023, 3.1871, 16.7644



62.8037, -11.2371, 16.1917



62.8037, -9.6366, -13.7057



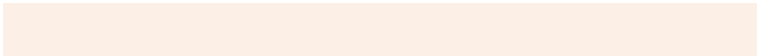
62.8037, 4.9373, -12.7707

Sweetspot

The Sweet Spot groups the original color and five complimentary colors.



62.8037, 3.1849, 16.7653



94.3288, -2.7072, 11.1478



56.4814, 21.6014, -3.6553



43.8037, -1.0587, 5.6367

0.0000, NaN, NaN



46.2646, -2.4686, 2.5136

Same Dimension

The Same Dimension uses a secret algorithm to generate beautiful new colors.



62.8037, 3.1849, 16.7653



81.5489, 6.9117, 25.6650



71.1002, -10.5850, 24.2023



32.9144, -0.9224, 3.9421



35.4194, 24.3434, 22.2515



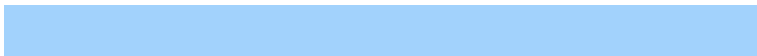
8.2453, 3.0851, 5.1348

Inverse Universe

The Inverse Universe completely reimagines the original color for something new.



60.6347, -6.8752, -12.6648



78.0087, -9.4397, -22.3776



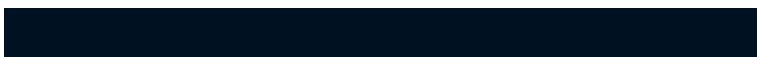
52.5034, 7.0850, -25.1600



32.5873, -2.4490, -0.4946



30.3200, 4.1533, -46.8632



7.3082, -0.8618, -7.2744

Previews

White Background



This preview shows how the HunterLab color 62.8023, 3.1871, 16.7644 looks on a white background.

Color Contrast Check

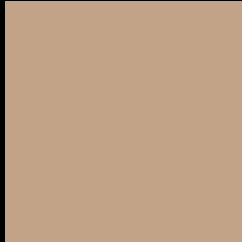
Large Text (above 18pt) WCAG AA × Fail

Any Text WCAG AA × Fail

Large Text (above 18pt) WCAG AAA × Fail

Any Text WCAG AAA × Fail

Black Background



This preview shows how the HunterLab color 62.8023, 3.1871, 16.7644 looks on a black background.

Color Contrast Check

Large Text (above 18pt) WCAG AA ✓ Pass

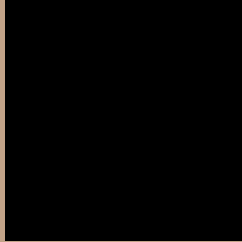
Any Text WCAG AA ✓ Pass

Large Text (above 18pt) WCAG AAA ✓ Pass

Any Text WCAG AAA ✓ Pass

If you want to check with other color combinations, try the [Color Contrast Checker](#).

HunterLab 62.8023, 3.1871, 16.7644 Background



This preview shows how black text looks on a background with the HunterLab color 62.8023, 3.1871, 16.7644.



This preview shows how white text looks on a background with the HunterLab color 62.8023, 3.1871,

Color Blindness Simulation

Color vision deficiency is a very complex topic, and I could not describe the different causes any better than Wikipedia does, so if you want to learn more, you should check out their [article about color blindness](#).

Dichromacy



Original Color

62.8023, 3.1871, 16.7644

Protanopia

62.8117, -4.0531, 15.5767

Deuteranopia

62.7328, 4.4015, 16.7184



Tritanopia

62.7390, 11.8963, 2.9281

Trichromacy



Original Color

62.8023, 3.1871, 16.7644

Protanomaly

62.6879, -1.5273, 15.8598

Deuteranomaly

62.6261, 4.0434, 16.6090

Tritanomaly

62.8336, 8.6984, 8.3465

Monochromacy



Original Color

62.8023, 3.1871, 16.7644

Achromatopsia

62.9885, -3.3609, 3.4223

Achromatomaly

62.8782, -1.4106, 8.6426

CSS Examples

Text

The CSS property to change the color of the text to HunterLab 62.8023, 3.1871, 16.7644 is called "color". The color property can be set on classes, ids or directly on the HTML element.

This example shows how text in the color `rgb(194, 163, 136)` looks like.

```
.text, #text, p{  
    color:rgb(194, 163, 136)  
}
```

If you want to add a text shadow in that color use the text-shadow property, you can generate a text shadow directly with our [CSS Text Shadow Generator](#).

Here you see how black text with a 4 pixel rgb(194, 163, 136) colored shadow looks like.

```
.shadow{ text-shadow: 4px 4px 2px rgb(194, 163, 136) }
```

Border

The CSS property to change the border of an element to HunterLab 62.8023, 3.1871, 16.7644 is called "border". The border property can be set on classes, ids or directly on the HTML element.

This example shows the color as border, it can be applied via the CSS property "border" or "border-color".

```
.border, #border, table{ border:4px solid rgb(194, 163, 136) }
```


If only the border color should be changed use the property border-color.

```
.border{ border-color:rgb(194, 163, 136) }
```

If you want to add a box shadow in that color use:

Here you see how a box with a 4 pixel rgb(194, 163, 136) colored shadow looks like.

```
.boxshadow{ -moz-box-shadow:4px 4px 4px  
4px rgb(194, 163, 136); -webkit-box-  
shadow:4px 4px 4px 4px rgb(194, 163, 136);  
box-shadow:4px 4px 4px 4px rgb(194, 163,  
136) }
```

Background

The CSS property to change the background color of an element to HunterLab 62.8023, 3.1871, 16.7644 is called "background". The background property can be set on classes, ids or directly on the HTML element.

```
.background, #background, body{  
background: rgb(194, 163, 136) }
```

If only the background color should be changed can be used:

```
.background{ background-color: rgb(194,  
163, 136) }
```

This example shows the color as background, it is applied via the CSS property "background".

To optimize and compress your CSS code, you can use our [online CSS compressor and optimizer](#) based on csstidy. If you want to create a linear or radial gradient as background or border, check our [CSS Gradient Generator](#).

Hey! You found this booklet interesting? Support Converting Colors with the new Membership Option!

The pro membership hides all ads, plus gives you double the colors in the color bucket, and more awesome pro features!

[Learn more, Memberships starting at \\$2.50/m!](#)

**Follow me
on Twitter!**

@ConvertingColor