

Converting Colors

HunterLab(62.7251, 10.5795,
8.5285)

Have a look what the booklet for
HunterLab(62.7251, 10.5795,
8.5285) contains.

| | |
|--|----|
| HunterLab(62.5839, 10.6462, 8.5308) | 3 |
| <i>Conversions</i> | 4 |
| <i>Details</i> | 6 |
| <i>Harmonies</i> | 12 |
| <i>Previews</i> | 24 |
| <i>Color Blindness Simulation</i> | 28 |
| <i>CSS Examples</i> | 31 |

Color

**HunterLab(62.5839, 10.6462,
8.5308)**

Conversions

Conversions Part 1

| Format | Color |
|---------------|---------------------------|
| Hex | C89E9D |
| RGB | 200, 158, 157 |
| RGB Percent | 78%, 62%, 62% |
| CMY | 0.2157, 0.3804, 0.3843 |
| CMYK | 0.00, 0.21, 0.21, 0.22 |
| HSL | 1°, 28%, 70% |
| HSV | 1°, 21%, 78% |
| XYZ | 42.1321, 39.1674, 37.2378 |
| YIQ | 170.4440, 25.3530, 8.5930 |

Conversions

Conversions Part 2

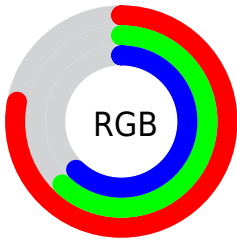
| Format | Color |
|-------------------------------------|-------------------------------|
| R _Y B | 200, 158, 157 |
| Decimal | 13147805 |
| CIE Lab | 68.87, 15.41, 6.47 |
| CIE LCh | 69, 16.709, 22.779 |
| Yxy | 39.1692, 0.3554, 0.3304 |
| Android (android.graphics.Color) | 4291337885 (0xFFC89E9D) |
| YUV | 170.4440, -6.6279, 25.9206 |
| Hunter-Lab | 62.5839, 10.6462, 8.5308 |

Details

The HunterLab color $62.5839, 10.6462, 8.5308$ is a light color, and the websafe version is hex $CC9999$. A complement of this color would be $72.2383, -15.8331, -0.6136$, and the grayscale version is $63.6057, -3.3938, 3.4558$.

A 20% lighter version of the original color is $85.7916, 9.9019, 9.9913$, and $41.6754, 10.2998, 6.4616$ is the 20% darker color. If you saturate the color by 10%, you get $56.9195, 17.9641, 10.7350$, and if you desaturate by 10%, it is $68.6376, 3.6325, 6.4269$.

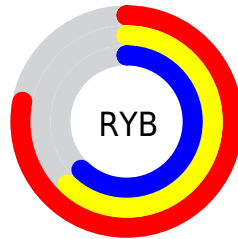
Distribution



Red (78%)

Green (62%)

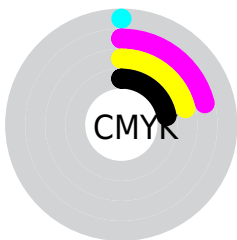
Blue (62%)



Red (78%)

Yellow (62%)

Blue (62%)

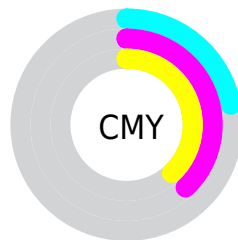


Cyan (0%)

Magenta (21%)

Yellow (21%)

Black (22%)



Cyan (22%)


Magenta (38%)


Yellow (38%)

Brightness & Saturation Gradients


These gradients show how the HunterLab color 62.5839, 10.6462, 8.5308 changes by changing the brightness by 10 percent. The first figure shows a shift by +10% for each color and the second figure -10%.


Similar to the brightness gradients but the following saturation gradients show a change of the HunterLab color 62.5839, 10.6462, 8.5308 by changing the saturation by 10% instead.


 62.5839, 10.6462,
8.5308

 62.5839, 10.6462,
8.5308


185.0971, 9.7645,
17.6032

 51.8569, 10.4402,
7.6077

 85.9632, 10.8334,
10.4252

 41.8231, 10.1516,
6.6957


 98.5471, 10.8327,
11.3968

 32.5356, 9.7658,
5.7918


111.6913, 10.7753,
12.3861

 24.0603, 9.2660,
4.8893

125.3729, 10.6654,
13.3932

 16.4839, 8.6293,
3.9758

139.5717, 10.5065,
14.4184

 9.9294, 7.8248,
3.2643

154.2693, 10.3017,

0.0000, INF, NaN

15.4619

0.0000, NaN, NaN

169.4494, 10.0536,
16.5235

0.0000, NaN, NaN

■ 62.5839, 10.6462,
8.5308

■ 62.5839, 10.6462,
8.5308

■ 56.9195, 17.9641,
10.7350

■ 68.6376, 3.6325,
6.4269

■ 51.7135, 25.5480,
13.0172

■ 75.0171, -3.0742,
4.4216

■ 47.0566, 33.2619,
15.3287

■ 81.6770, -9.5025,
2.5092

■ 43.0510, 40.8321,
17.5728

■ 88.5800, -15.6872,
0.6793

■ 39.8023, 47.8075,
19.5966

■ 95.4041, -21.7132,
-0.3877

■ 37.3972, 53.5945,
21.2072

■ 35.8696, 57.6257,
22.2349

■ 35.1863, 59.5174,
22.7236

Harmonies

Analogous

The Analogous color harmony consists of three colors that are next to each other on the color wheel.



62.5853, 11.7544, 1.6421



62.5839, 10.6462, 8.5308



62.5853, 5.7029, 13.4558

Triad

The Triadic color harmony groups three colors that are evenly spaced from another and form a triangle on the color wheel.



62.5853, 10.6440, 8.5318



62.5853, -14.5118, 11.2133



62.5853, -5.1609, -11.9374

Complementary

The Complementary color scheme is a pair of colors which are on the opposite of each other on the color wheel.



62.5839, 10.6462, 8.5308



72.2383, -15.8331, -0.6136

Split Complementary

Split-complementary colors differ from the complementary color scheme. The scheme consists of three colors, the original color and two neighbors of the complement color.



62.5853, -11.9022, -8.6465



62.5839, 10.6462, 8.5308



62.5853, -17.1320, 5.1214

Square

The Square scheme is like the rectangle color scheme, but the four colors are evenly spaced on the color wheel.



62.5853, 10.6440, 8.5318



62.5853, -8.8768, 14.8708



62.5853, -16.1998, -2.1923



62.5853, 2.3905, -10.7441

Rectangle

The Rectangle color scheme consists of four colors that form a rectangle on the color wheel.



62.5839, 10.6462, 8.5308



62.5853, 1.0229, 15.2367



62.5853, -16.1998, -2.1923



62.5853, -7.5919, -11.3069

Sweetspot

The Sweet Spot groups the original color and five complimentary colors.



62.5853, 10.6440, 8.5318



94.8089, -0.0456, 7.0123



63.6636, 18.1763, -10.9345



43.6055, 0.2492, 3.3250

0.0000, NaN, NaN



46.2646, -2.4686, 2.5136

Same Dimension

The Same Dimension uses a secret algorithm to generate beautiful new colors.



62.5853, 10.6440, 8.5318



78.6482, 18.6501, 12.6237



68.5866, -0.1293, 14.6854



32.6740, 1.0205, 2.7989



28.0898, 47.3480, 18.1377



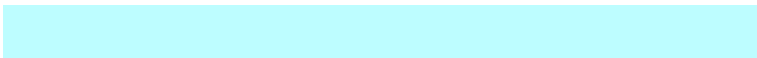
6.2272, 9.9177, 4.0108

Inverse Universe

The Inverse Universe completely reimagines the original color for something new.



72.2383, -15.8331, -0.6136



94.0941, -23.8473, -2.0508



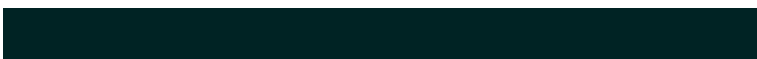
65.6456, -5.5488, -9.0001



34.6748, -4.4425, 0.9111



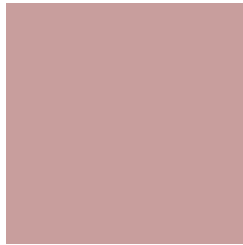
52.5188, -27.0110, -7.3349



11.4882, -5.9496, -1.5157

Previews

White Background



This preview shows how the HunterLab color 62.5839, 10.6462, 8.5308 looks on a white background.

Color Contrast Check

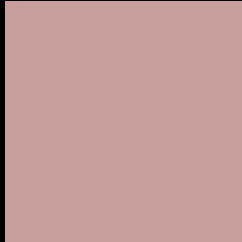
Large Text (above 18pt) WCAG AA × Fail

Any Text WCAG AA × Fail

Large Text (above 18pt) WCAG AAA × Fail

Any Text WCAG AAA × Fail

Black Background



This preview shows how the HunterLab color 62.5839, 10.6462, 8.5308 looks on a black background.

Color Contrast Check

Large Text (above 18pt) WCAG AA ✓ Pass

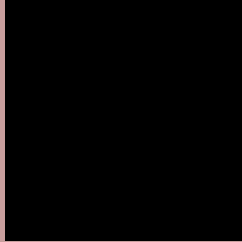
Any Text WCAG AA ✓ Pass

Large Text (above 18pt) WCAG AAA ✓ Pass

Any Text WCAG AAA ✓ Pass

If you want to check with other color combinations, try the [Color Contrast Checker](#).

HunterLab 62.5839, 10.6462, 8.5308 Background



This preview shows how black text looks on a background with the HunterLab color 62.5839, 10.6462, 8.5308.



This preview shows how white text looks on a background with the HunterLab color 62.5839, 10.6462,

Color Blindness Simulation

Color vision deficiency is a very complex topic, and I could not describe the different causes any better than Wikipedia does, so if you want to learn more, you should check out their [article about color blindness](#).

Dichromacy



Original Color

62.5839, 10.6462, 8.5308

Protanopia

62.8475, -2.7432, 6.4308

Deuteranopia

62.4978, 4.6082, 8.7534



Tritanopia

62.4673, 13.6796, 3.5700

Trichromacy



Original Color

62.5839, 10.6462, 8.5308

Protanomaly

62.5750, 2.1696, 7.0846

Deuteranomaly

62.6319, 6.4969, 8.9329

Tritanomaly

62.6193, 12.5490, 5.5508

Monochromacy



Original Color

62.5839, 10.6462, 8.5308

Achromatopsia

63.4017, -3.3830, 3.4447

Achromatomaly

63.0974, 1.2777, 5.4534

CSS Examples

Text

The CSS property to change the color of the text to HunterLab 62.5839, 10.6462, 8.5308 is called "color". The color property can be set on classes, ids or directly on the HTML element.

This example shows how text in the color `rgb(200, 158, 157)` looks like.

```
.text, #text, p{  
    color:rgb(200, 158, 157)  
}
```

If you want to add a text shadow in that color use the text-shadow property, you can generate a text shadow directly with our [CSS Text Shadow Generator](#).

Here you see how black text with a 4 pixel rgb(200, 158, 157) colored shadow looks like.

```
.shadow{ text-shadow: 4px 4px 2px rgb(200, 158, 157) }
```

Border

The CSS property to change the border of an element to HunterLab 62.5839, 10.6462, 8.5308 is called "border". The border property can be set on classes, ids or directly on the HTML element.

This example shows the color as border, it can be applied via the CSS property "border" or "border-color".

```
.border, #border, table{ border:4px solid rgb(200, 158, 157) }
```


If only the border color should be changed use the property `border-color`.

```
.border{ border-color:rgb(200, 158, 157) }
```

If you want to add a box shadow in that color use:

Here you see how a box with a 4 pixel `rgb(200, 158, 157)` colored shadow looks like.

```
.boxshadow{ -moz-box-shadow:4px 4px 4px  
4px rgb(200, 158, 157); -webkit-box-  
shadow:4px 4px 4px 4px rgb(200, 158, 157);  
box-shadow:4px 4px 4px 4px rgb(200, 158,  
157) }
```

Background

The CSS property to change the background color of an element to HunterLab 62.5839, 10.6462, 8.5308 is called "background". The background property can be set on classes, ids or directly on the HTML element.

```
.background, #background, body{  
background: rgb(200, 158, 157) }
```

If only the background color should be changed can be used:

```
.background{ background-color: rgb(200,  
158, 157) }
```

This example shows the color as background, it is applied via the CSS property "background".

To optimize and compress your CSS code, you can use our [online CSS compressor and optimizer](#) based on csstidy. If you want to create a linear or radial gradient as background or border, check our [CSS Gradient Generator](#).

Hey! You found this booklet interesting? Support Converting Colors with the new Membership Option!

The pro membership hides all ads, plus gives you double the colors in the color bucket, and more awesome pro features!

[Learn more, Memberships starting at \\$2.50/m!](#)

**Follow me
on Twitter!**

@ConvertingColor