

Converting Colors

HunterLab(62.7283, 0.0016,
10.9400)

Have a look what the booklet for
HunterLab(62.7283, 0.0016,
10.9400) contains.

HunterLab(62.9079, -0.1349, 11.1669)	3
<i>Conversions</i>	4
<i>Details</i>	6
<i>Harmonies</i>	12
<i>Previews</i>	24
<i>Color Blindness Simulation</i>	28
<i>CSS Examples</i>	31

Color

**HunterLab(62.9079, -0.1349,
11.1669)**

Conversions

Conversions Part 1

Format	Color
Hex	B7A697
RGB	183, 166, 151
RGB Percent	72%, 65%, 59%
CMY	0.2824, 0.3490, 0.4078
CMYK	0.00, 0.09, 0.17, 0.28
HSL	28°, 18%, 65%
HSV	28°, 17%, 72%
XYZ	38.7505, 39.5740, 34.8743
YIQ	169.3730, 14.9470, -1.0610

Conversions

Conversions Part 2

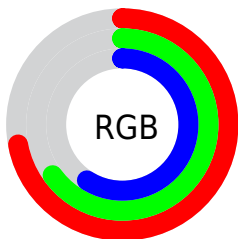
Format	Color
RYB	183, 179, 151
Decimal	12035735
CIELab	69.17, 3.66, 10.00
CIELCh	69, 10.646, 69.899
Yxy	39.5758, 0.3423, 0.3496
Android (android.graphics.Color)	4290225815 (0xFFB7A697)
YUV	169.3730, -9.0579, 11.9509
Hunter-Lab	62.9079, -0.1349, 11.1669

Details

The HunterLab color $62.9079, -0.1349, 11.1669$ is a light color, and the websafe version is hex 999999 . A complement of this color would be $61.6462, -5.6327, -5.2002$, and the grayscale version is $63.1756, -3.3709, 3.4325$.

A 20% lighter version of the original color is $86.2968, -1.1142, 13.4740$, and $42.0720, 0.7213, 8.9465$ is the 20% darker color. If you saturate the color by 10%, you get $59.6868, 2.2468, 14.8827$, and if you desaturate by 10%, it is $66.2464, -2.2519, 7.0540$.

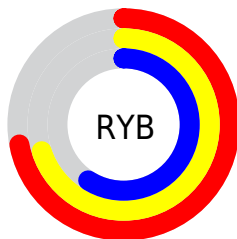
Distribution



Red (72%)

Green (65%)

Blue (59%)



Red (72%)

Yellow (70%)

Blue (59%)

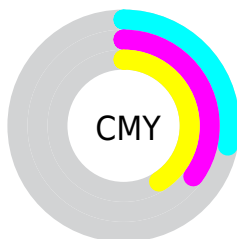


Cyan (0%)

Magenta (9%)

Yellow (17%)

Black (28%)



Cyan (28%)

Magenta (35%)

Yellow (41%)

Brightness & Saturation Gradients

These gradients show how the HunterLab color 62.9079, -0.1349, 11.1669 changes by changing the brightness by 10 percent. The first figure shows a shift by +10% for each color and the second figure -10%.

Similar to the brightness gradients but the following saturation gradients show a change of the HunterLab color 62.9079, -0.1349, 11.1669 by changing the saturation by 10% instead.

■ 62.9079, -0.1349,
11.1669

■ 62.9079, -0.1349,
11.1669

185.5620, -5.3120,
21.6081

■ 52.1613, 0.2461,
10.0468

■ 86.3233, -1.0356,
13.4181

■ 42.1064, 0.5792,
8.9218

■ 98.9239, -1.5451,
14.5537

■ 32.7962, 0.8565,
7.7844

112.0842, -2.0914,
15.6990

■ 24.2960, 1.0703,
6.6212

125.7812, -2.6724,
16.8553

■ 16.6918, 1.2091,
5.4085

139.9948, -3.2863,
18.0238

■ 10.1052, 1.2543,
4.6919

154.7067, -3.9318,

0.0000, INF, NaN

19.2050

0.0000, NaN, NaN

169.9007, -4.6074,
20.3997

0.0000, NaN, NaN

■ 62.9079, -0.1349,
11.1669

■ 62.9079, -0.1349,
11.1669

■ 59.6868, 2.2468,
14.8827

■ 66.2464, -2.2519,
7.0540

■ 56.5895, 4.9177,
18.1513

■ 69.6886, -4.1189,
2.5834

■ 53.6293, 7.8920,
20.9229

■ 73.2274, -5.7578,
-2.2062

■ 50.8189, 11.1798,
23.1445

■ 76.8552, -7.1883,
-7.2821

■ 48.1721, 14.7815,
24.7654

■ 80.5653, -8.4287,
-12.6156

■ 45.7031, 18.6830,
25.7437

■ 84.1265, -10.7443,
-15.0266

■ 43.4255, 22.8491,
26.0589

■ 87.2684, -15.6488,
-10.7759

■ 41.3489, 27.2038,
25.7658

■ 90.4690, -20.4871,
-6.6145

■ 40.8551, 28.2965,
25.6701

■ 93.7248, -25.2621,
-2.5381

Harmonies

Analogous

The Analogous color harmony consists of three colors that are next to each other on the color wheel.



62.9093, 3.9236, 8.8311



62.9079, -0.1349, 11.1669



62.9093, -4.9485, 11.5196

Triad

The Triadic color harmony groups three colors that are evenly spaced from another and form a triangle on the color wheel.



62.9093, -0.1368, 11.1678



62.9093, -12.2490, 1.8867



62.9093, 2.7079, -3.7365

Complementary

The Complementary color scheme is a pair of colors which are on the opposite of each other on the color wheel.



62.9079, -0.1349, 11.1669



61.6462, -5.6327, -5.2002

Split Complementary

Split-complementary colors differ from the complementary color scheme. The scheme consists of three colors, the original color and two neighbors of the complement color.



62.9093, -1.7557, -5.9140



62.9079, -0.1349, 11.1669



62.9093, -10.3267, -2.5095

Square

The Square scheme is like the rectangle color scheme, but the four colors are evenly spaced on the color wheel.



62.9093, -0.1368, 11.1678



62.9093, -11.8451, 6.3852



62.9093, -6.5197, -5.4488



62.9093, 5.6000, 0.3122

Rectangle

The Rectangle color scheme consists of four colors that form a rectangle on the color wheel.



62.9079, -0.1349, 11.1669



62.9093, -7.9223, 10.6109



62.9093, -6.5197, -5.4488



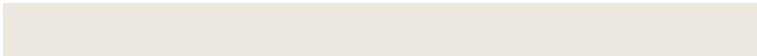
62.9093, 1.3361, -4.7249

Sweetspot

The Sweet Spot groups the original color and five complimentary colors.



62.9093, -0.1368, 11.1678



89.7505, -3.6434, 8.0438



59.1867, 10.0302, -0.4974



42.0295, -1.6270, 3.9729



96.5975, -5.1542, 5.2483



43.2801, -2.3093, 2.3515

Same Dimension

The Same Dimension uses a secret algorithm to generate beautiful new colors.



62.9093, -0.1368, 11.1678



82.5058, 1.0045, 16.9317



67.6244, -7.9317, 15.8608



31.1253, -0.8914, 3.7209



34.3208, 23.1607, 21.5538



7.3438, 2.3670, 4.5667

Inverse Universe

The Inverse Universe completely reimagines the original color for something new.



61.6462, -5.6327, -5.2002



80.4512, -7.9253, -9.6963



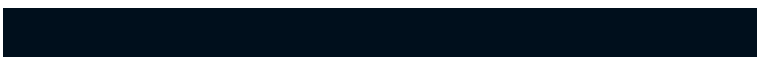
56.9885, 2.2214, -11.4544



30.8025, -2.2980, -0.4612



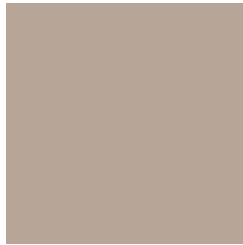
29.1777, 4.1625, -45.4552



6.5028, -0.9602, -6.0551

Previews

White Background



This preview shows how the HunterLab color 62.9079, -0.1349, 11.1669 looks on a white background.

Color Contrast Check

Large Text (above 18pt) WCAG AA × Fail

Any Text WCAG AA × Fail

Large Text (above 18pt) WCAG AAA × Fail

Any Text WCAG AAA × Fail

Black Background



This preview shows how the HunterLab color 62.9079, -0.1349, 11.1669 looks on a black background.

Color Contrast Check

Large Text (above 18pt) WCAG AA ✓ Pass

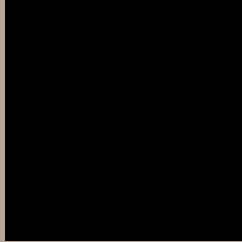
Any Text WCAG AA ✓ Pass

Large Text (above 18pt) WCAG AAA ✓ Pass

Any Text WCAG AAA ✓ Pass

If you want to check with other color combinations, try the [Color Contrast Checker](#).

HunterLab 62.9079, -0.1349, 11.1669 Background



This preview shows how black text looks on a background with the HunterLab color 62.9079, -0.1349, 11.1669.



This preview shows how white text looks on a background with the HunterLab color 62.9079, -0.1349,

Color Blindness Simulation

Color vision deficiency is a very complex topic, and I could not describe the different causes any better than Wikipedia does, so if you want to learn more, you should check out their [article about color blindness](#).

Dichromacy



Original Color

62.9079, -0.1349, 11.1669

Protanopia

62.8509, -3.2751, 10.6484

Deuteranopia

62.9824, 4.5711, 10.9253



Tritanopia

62.7494, 6.5570, 0.4592

Trichromacy



Original Color

62.9079, -0.1349, 11.1669

Protanomaly

62.8396, -1.8101, 10.6620

Deuteranomaly

62.9577, 3.0328, 10.8721

Tritanomaly

62.6593, 4.2609, 4.5484

Monochromacy



Original Color

62.9079, -0.1349, 11.1669

Achromatopsia

62.9885, -3.3609, 3.4223

Achromatomaly

62.9385, -2.4279, 6.5390

CSS Examples

Text

The CSS property to change the color of the text to HunterLab 62.9079, -0.1349, 11.1669 is called "color". The color property can be set on classes, ids or directly on the HTML element.

This example shows how text in the color `rgb(183, 166, 151)` looks like.

```
.text, #text, p{  
    color:rgb(183, 166, 151)  
}
```

If you want to add a text shadow in that color use the text-shadow property, you can generate a text shadow directly with our [CSS Text Shadow Generator](#).

Here you see how black text with a 4 pixel rgb(183, 166, 151) colored shadow looks like.

```
.shadow{ text-shadow: 4px 4px 2px rgb(183, 166, 151) }
```

Border

The CSS property to change the border of an element to HunterLab 62.9079, -0.1349, 11.1669 is called "border". The border property can be set on classes, ids or directly on the HTML element.

This example shows the color as border, it can be applied via the CSS property "border" or "border-color".

```
.border, #border, table{ border:4px solid rgb(183, 166, 151) }
```


If only the border color should be changed use the property `border-color`.

```
.border{ border-color:rgb(183, 166, 151) }
```

If you want to add a box shadow in that color use:

Here you see how a box with a 4 pixel `rgb(183, 166, 151)` colored shadow looks like.

```
.boxshadow{ -moz-box-shadow:4px 4px 4px  
4px rgb(183, 166, 151); -webkit-box-  
shadow:4px 4px 4px 4px rgb(183, 166, 151);  
box-shadow:4px 4px 4px 4px rgb(183, 166,  
151) }
```

Background

The CSS property to change the background color of an element to HunterLab 62.9079, -0.1349, 11.1669 is called "background". The background property can be set on classes, ids or directly on the HTML element.

```
.background, #background, body{  
background: rgb(183, 166, 151) }
```

If only the background color should be changed can be used:

```
.background{ background-color: rgb(183,  
166, 151) }
```

This example shows the color as background, it is applied via the CSS property "background".

To optimize and compress your CSS code, you can use our [online CSS compressor and optimizer](#) based on csstidy. If you want to create a linear or radial gradient as background or border, check our [CSS Gradient Generator](#).

Hey! You found this booklet interesting? Support Converting Colors with the new Membership Option!

The pro membership hides all ads, plus gives you double the colors in the color bucket, and more awesome pro features!

[Learn more, Memberships starting at \\$2.50/m!](#)

**Follow me
on Twitter!**

@ConvertingColor