

Converting Colors

HunterLab(62.7333, 49.1601,
5.0088)

Have a look what the booklet for
HunterLab(62.7333, 49.1601,
5.0088) contains.

HunterLab(62.8398, 48.9148, 5.0839)	3
<i>Conversions</i>	4
<i>Details</i>	6
<i>Harmonies</i>	12
<i>Previews</i>	24
<i>Color Blindness Simulation</i>	28
<i>CSS Examples</i>	31

Color

**HunterLab(62.8398, 48.9148,
5.0839)**

Conversions

Conversions Part 1

Format	Color
Hex	FF80A7
RGB	255, 128, 167
RGB Percent	100%, 50%, 65%
CMY	0.0000, 0.4980, 0.3451
CMYK	0.00, 0.50, 0.35, 0.00
HSL	342°, 100%, 75%
HSV	342°, 50%, 100%
XYZ	55.9343, 39.4884, 41.2332
YIQ	170.4190, 63.1730, 39.0530

Conversions

Conversions Part 2

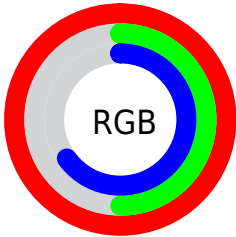
Format	Color
R_{YB}	255, 128, 167
Decimal	16744615
CIE _{Lab}	69.10, 52.17, 2.04
CIE _{LCh}	69, 52.213, 2.234
Yxy	39.4904, 0.4093, 0.2890
Android (android.graphics.Color)	4294934695 (0xFFFF80A7)
YUV	170.4190, -1.6856, 74.1775
Hunter-Lab	62.8398, 48.9148, 5.0839

Details

The HunterLab color **62.8398, 48.9148, 5.0839** is a light color, and the websafe version is hex **FF6699**. A complement of this color would be **90.0378, -44.4470, 11.9197**, and the grayscale version is **63.5649, -3.3917, 3.4536**.

A 20% lighter version of the original color is **77.9839, 27.3364, -4.0093**, and **42.1159, 45.1774, 3.9088** is the 20% darker color. If you saturate the color by 10%, you get **57.4833, 59.3017, 6.9887**, and if you desaturate by 10%, it is **69.0637, 37.9263, 3.9733**.

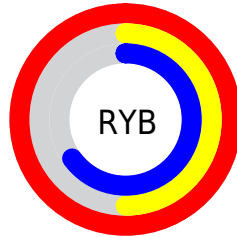
Distribution



Red (100%)

Green (50%)

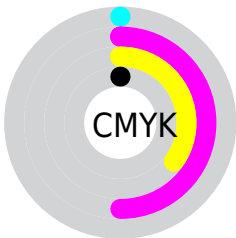
Blue (65%)



Red (100%)

Yellow (50%)

Blue (65%)

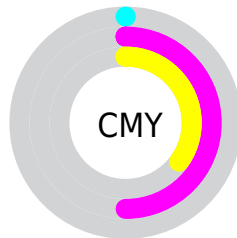


Cyan (0%)

Magenta (50%)

Yellow (35%)

Black (0%)



Cyan (0%)

Magenta (50%)

Yellow (35%)

Brightness & Saturation Gradients

These gradients show how the HunterLab color 62.8398, 48.9148, 5.0839 changes by changing the brightness by 10 percent. The first figure shows a shift by +10% for each color and the second figure -10%.

Similar to the brightness gradients but the following saturation gradients show a change of the HunterLab color 62.8398, 48.9148, 5.0839 by changing the saturation by 10% instead.

62.8398, 48.9148,
5.0839

62.8398, 48.9148,
5.0839

185.4645, 59.9608,
12.5003

52.0974, 47.2093,
4.3967

86.2478, 51.9930,
6.5495

42.0470, 45.3980,
3.7385

98.8449, 53.3834,
7.3234

32.7416, 43.4855,
3.1116

112.0018, 54.6810,
8.1238

24.2466, 41.5047,
2.5168

125.6956, 55.8915,
8.9502

16.6482, 39.5591,
1.9543

139.9061, 57.0202,
9.8016

10.0682, 37.9965,
1.4225

154.6150, 58.0718,

0.0000, INF, NaN

10.6776

0.0000, INF, NaN

169.8061, 59.0506,
11.5773

0.0000, NaN, NaN

■ 62.8398, 48.9148,
5.0839

■ 62.8398, 48.9148,
5.0839

■ 57.4833, 59.3017,
6.9887

■ 69.0637, 37.9263,
3.9733

■ 53.1277, 68.4197,
9.7086

■ 76.0156, 26.7979,
3.5616

■ 49.8868, 75.4402,
13.1438

■ 83.5795, 15.7782,
3.7394

■ 47.8012, 79.6662,
17.0274

■ 91.6582, 4.9853,
4.4013

■ 46.7231, 81.1514,
20.9090

100.0000, -5.3358,
5.4332

■ 46.7058, 81.1720,
20.9799

Harmonies

Analogous

The Analogous color harmony consists of three colors that are next to each other on the color wheel.



62.8414, 42.2134, -20.2839



62.8398, 48.9148, 5.0839



62.8414, 39.9749, 22.4128

Triad

The Triadic color harmony groups three colors that are evenly spaced from another and form a triangle on the color wheel.



62.8414, 48.9110, 5.0853



62.8414, -25.8417, 30.1332



62.8414, -23.1899, -48.2318

Complementary

The Complementary color scheme is a pair of colors which are on the opposite of each other on the color wheel.



62.8398, 48.9148, 5.0839



90.0378, -44.4470, 11.9197

Split Complementary

Split-complementary colors differ from the complementary color scheme. The scheme consists of three colors, the original color and two neighbors of the complement color.



62.8414, -37.4150, -24.3396



62.8398, 48.9148, 5.0839



62.8414, -38.7793, 20.4362

Square

The Square scheme is like the rectangle color scheme, but the four colors are evenly spaced on the color wheel.



62.8414, 48.9110, 5.0853



62.8414, -5.1210, 33.1316



62.8414, -42.6839, 1.7092



62.8414, -1.5721, -57.0639

Rectangle

The Rectangle color scheme consists of four colors that form a rectangle on the color wheel.



62.8398, 48.9148, 5.0839



62.8414, 27.0263, 28.9284



62.8414, -42.6839, 1.7092



62.8414, -28.8782, -41.3472

Sweetspot

The Sweet Spot groups the original color and five complimentary colors.



62.8414, 48.9110, 5.0853



87.3990, 10.5646, 4.0027



60.8892, 50.9609, -53.7111



39.6524, 5.9436, 1.7923

0.0000, NaN, NaN



46.2646, -2.4686, 2.5136

Same Dimension

The Same Dimension uses a secret algorithm to generate beautiful new colors.



62.8414, 48.9110, 5.0853



57.3864, 59.4982, 7.0350



67.1157, 32.1492, 23.8761



42.5193, 2.1602, 2.0483



33.7960, 58.8026, 14.6612



10.6331, 18.6704, 3.2984

Inverse Universe

The Inverse Universe completely reimagines the original color for something new.



62.8414, 48.9110, 5.0853



57.3864, 59.4982, 7.0350



83.2853, -26.3056, -16.4909



42.5193, 2.1602, 2.0483



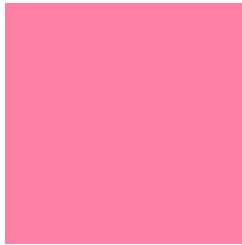
33.7960, 58.8026, 14.6612



10.6331, 18.6704, 3.2984

Previews

White Background



This preview shows how the HunterLab color 62.8398, 48.9148, 5.0839 looks on a white background.

Color Contrast Check

Large Text (above 18pt) WCAG AA × Fail

Any Text WCAG AA × Fail

Large Text (above 18pt) WCAG AAA × Fail

Any Text WCAG AAA × Fail

Black Background



This preview shows how the HunterLab color 62.8398, 48.9148, 5.0839 looks on a black background.

Color Contrast Check

Large Text (above 18pt) WCAG AA ✓ Pass

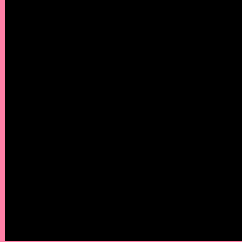
Any Text WCAG AA ✓ Pass

Large Text (above 18pt) WCAG AAA ✓ Pass

Any Text WCAG AAA ✓ Pass

If you want to check with other color combinations, try the [Color Contrast Checker](#).

HunterLab 62.8398, 48.9148, 5.0839 Background



This preview shows how black text looks on a background with the HunterLab color 62.8398, 48.9148, 5.0839.



This preview shows how white text looks on a background with the HunterLab color 62.8398, 48.9148,

Color Blindness Simulation

Color vision deficiency is a very complex topic, and I could not describe the different causes any better than Wikipedia does, so if you want to learn more, you should check out their [article about color blindness](#).

Dichromacy



Original Color

62.8398, 48.9148, 5.0839

Protanopia

63.1457, 0.1144, -7.3684

Deuteranopia

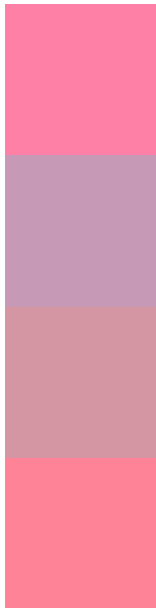
62.8164, 4.5011, 6.9606



Tritanopia

62.9370, 42.3837, 15.4153

Trichromacy



Original Color

62.8398, 48.9148, 5.0839

Protanomaly

61.7783, 16.4871, -4.1172

Deuteranomaly

62.0114, 20.0589, 5.4326

Tritanomaly

62.8791, 44.8889, 11.9247

Monochromacy



Original Color

62.8398, 48.9148, 5.0839

Achromatopsia

63.4017, -3.3830, 3.4447

Achromatomaly

62.2292, 14.3556, 2.8335

CSS Examples

Text

The CSS property to change the color of the text to HunterLab 62.8398, 48.9148, 5.0839 is called "color". The color property can be set on classes, ids or directly on the HTML element.

This example shows how text in the color `rgb(255, 128, 167)` looks like.

```
.text, #text, p{  
    color:rgb(255, 128, 167)  
}
```

If you want to add a text shadow in that color use the text-shadow property, you can generate a text shadow directly with our [CSS Text Shadow Generator](#).

Here you see how black text with a 4 pixel rgb(255, 128, 167) colored shadow looks like.

```
.shadow{ text-shadow: 4px 4px 2px rgb(255, 128, 167) }
```

Border

The CSS property to change the border of an element to HunterLab 62.8398, 48.9148, 5.0839 is called "border". The border property can be set on classes, ids or directly on the HTML element.

This example shows the color as border, it can be applied via the CSS property "border" or "border-color".

```
.border, #border, table{ border:4px solid rgb(255, 128, 167) }
```


If only the border color should be changed use the property `border-color`.

```
.border{ border-color:rgb(255, 128, 167) }
```

If you want to add a box shadow in that color use:

Here you see how a box with a 4 pixel `rgb(255, 128, 167)` colored shadow looks like.

```
.boxshadow{ -moz-box-shadow:4px 4px 4px  
4px rgb(255, 128, 167); -webkit-box-  
shadow:4px 4px 4px 4px rgb(255, 128, 167);  
box-shadow:4px 4px 4px 4px rgb(255, 128,  
167) }
```

Background

The CSS property to change the background color of an element to HunterLab 62.8398, 48.9148, 5.0839 is called "background". The background property can be set on classes, ids or directly on the HTML element.

```
.background, #background, body{  
background: rgb(255, 128, 167) }
```

If only the background color should be changed can be used:

```
.background{ background-color: rgb(255,  
128, 167) }
```

This example shows the color as background, it is applied via the CSS property "background".

To optimize and compress your CSS code, you can use our [online CSS compressor and optimizer](#) based on csstidy. If you want to create a linear or radial gradient as background or border, check our [CSS Gradient Generator](#).

Hey! You found this booklet interesting? Support Converting Colors with the new Membership Option!

The pro membership hides all ads, plus gives you double the colors in the color bucket, and more awesome pro features!

[Learn more, Memberships starting at \\$2.50/m!](#)

**Follow me
on Twitter!**

@ConvertingColor