

Converting Colors

HunterLab(62.7454, 5.5392,
19.4931)

Have a look what the booklet for
HunterLab(62.7454, 5.5392,
19.4931) contains.

HunterLab(62.7117, 5.4197, 19.4298)	3
<i>Conversions</i>	4
<i>Details</i>	6
<i>Harmonies</i>	12
<i>Previews</i>	24
<i>Color Blindness Simulation</i>	28
<i>CSS Examples</i>	31

Color

**HunterLab(62.7117, 5.4197,
19.4298)**

Conversions

Conversions Part 1

Format	Color
Hex	C8A180
RGB	200, 161, 128
RGB Percent	78%, 63%, 50%
CMY	0.2157, 0.3686, 0.4980
CMYK	0.00, 0.19, 0.36, 0.22
HSL	28°, 40%, 64%
HSV	28°, 36%, 78%
XYZ	40.4605, 39.3276, 25.8805
YIQ	168.8990, 33.8370, -1.9950

Conversions

Conversions Part 2

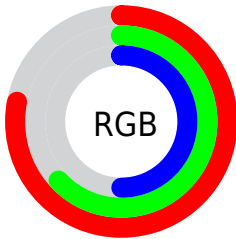
Format	Color
R_{YB}	200, 189, 128
Decimal	13148544
CIE _{Lab}	68.99, 9.80, 22.64
CIE _{LCh}	69, 24.671, 66.602
Yxy	39.3294, 0.3829, 0.3722
Android (android.graphics.Color)	4291338624 (0xFFC8A180)
YUV	168.8990, -20.1632, 27.2756
Hunter-Lab	62.7117, 5.4197, 19.4298

Details

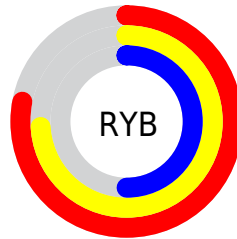
The HunterLab color **62.7117, 5.4197, 19.4298** is a light color, and the websafe version is hex **CC9966**. A complement of this color would be **60.3286, -7.5041, -16.6600**, and the grayscale version is **63.0187, -3.3625, 3.4239**.

A 20% lighter version of the original color is **85.8533, 3.8956, 22.7805**, and **41.8587, 5.8805, 15.4186** is the 20% darker color. If you saturate the color by 10%, you get **59.3549, 8.7843, 22.5558**, and if you desaturate by 10%, it is **66.2274, 2.3873, 15.7681**.

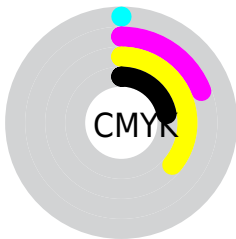
Distribution



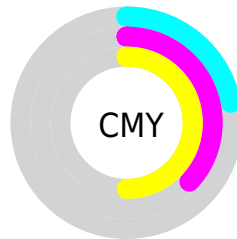
- Red (78%)
- Green (63%)
- Blue (50%)



- Red (78%)
- Yellow (74%)
- Blue (50%)



- Cyan (0%)
- Magenta (19%)
- Yellow (36%)
- Black (22%)



- Cyan (22%)
- Magenta (37%)
- Yellow (50%)

Brightness & Saturation Gradients

These gradients show how the HunterLab color 62.7117, 5.4197, 19.4298 changes by changing the brightness by 10 percent. The first figure shows a shift by +10% for each color and the second figure -10%.

Similar to the brightness gradients but the following saturation gradients show a change of the HunterLab color 62.7117, 5.4197, 19.4298 by changing the saturation by 10% instead.

62.7117, 5.4197,
19.4298

62.7117, 5.4197,
19.4298

185.2806, 2.5129,
35.0446

51.9770, 5.4880,
17.5511

86.1053, 5.0958,
23.0458

41.9348, 5.4892,
15.6012

98.6958, 4.8556,
24.8041

32.6384, 5.4110,
13.5545

111.8464, 4.5678,
26.5401

24.1533, 5.2399,
11.3714

125.5341, 4.2357,
28.2592

16.5659, 4.9560,
9.0695

139.7387, 3.8619,
29.9660

9.9987, 4.5286,
6.9991

154.4419, 3.4489,

0.0000, INF, NaN

31.6640

0.0000, NaN, NaN

169.6275, 2.9986,
33.3561

0.0000, NaN, NaN

■ 62.7117, 5.4197,
19.4298

■ 62.7117, 5.4197,
19.4298

■ 59.3549, 8.7843,
22.5558

■ 66.2274, 2.3873,
15.7681

■ 56.1677, 12.5006,
25.0831

■ 69.8837, -0.3241,
11.6258

■ 53.1678, 16.5672,
26.9530

■ 73.6697, -2.7390,
7.0561

■ 50.3722, 20.9686,
28.1147

■ 77.5744, -4.8805,
2.1058

■ 47.7977, 25.6645,
28.5392

■ 81.5881, -6.7715,
-3.1839

45.4587, 30.5789,
28.2471

85.7019, -8.4342,
-8.7773

44.5849, 32.5510,
28.0429

89.4255, -12.5690,
-7.8423

92.9658, -18.0464,
-3.3680

95.4041, -21.7133,
-0.3877

Harmonies

Analogous

The Analogous color harmony consists of three colors that are next to each other on the color wheel.



62.7132, 14.8576, 14.4235



62.7117, 5.4197, 19.4298



62.7132, -5.8021, 20.5192

Triad

The Triadic color harmony groups three colors that are evenly spaced from another and form a triangle on the color wheel.



62.7132, 5.4173, 19.4306



62.7132, -23.3069, 1.0166



62.7132, 9.9895, -15.3216

Complementary

The Complementary color scheme is a pair of colors which are on the opposite of each other on the color wheel.



62.7117, 5.4197, 19.4298



60.3286, -7.5041, -16.6600

Split Complementary

Split-complementary colors differ from the complementary color scheme. The scheme consists of three colors, the original color and two neighbors of the complement color.



62.7132, -0.8588, -20.4867



62.7117, 5.4197, 19.4298



62.7132, -19.6907, -10.0443

Square

The Square scheme is like the rectangle color scheme, but the four colors are evenly spaced on the color wheel.



62.7132, 5.4173, 19.4306



62.7132, -21.8843, 11.0034



62.7132, -11.6598, -18.4033



62.7132, 17.6239, -5.2620

Rectangle

The Rectangle color scheme consists of four colors that form a rectangle on the color wheel.



62.7117, 5.4197, 19.4298



62.7132, -12.6883, 19.0835



62.7132, -11.6598, -18.4033



62.7132, 6.5697, -17.7613

Sweetspot

The Sweet Spot groups the original color and five complimentary colors.



62.7132, 5.4173, 19.4306



94.3454, -2.0118, 12.4523



55.2542, 27.9045, -5.0066



43.3324, -0.7266, 6.1409

0.0000, NaN, NaN



46.2646, -2.4686, 2.5136

Same Dimension

The Same Dimension uses a secret algorithm to generate beautiful new colors.



62.7132, 5.4173, 19.4306



79.1332, 10.4615, 28.7677



73.1426, -11.9665, 28.3060



33.8003, -0.9129, 4.0373



35.7968, 25.3594, 22.5018



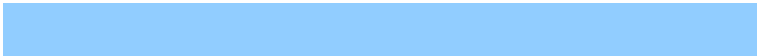
8.6670, 3.5306, 5.4024

Inverse Universe

The Inverse Universe completely reimagines the original color for something new.



60.3286, -7.5041, -16.6600



75.3714, -9.7983, -28.1500



50.1537, 10.1935, -33.5147



33.5011, -2.5500, -0.4929



31.1371, 3.7008, -46.9076



7.7635, -0.8839, -7.7956

Previews

White Background



This preview shows how the HunterLab color 62.7117, 5.4197, 19.4298 looks on a white background.

Color Contrast Check

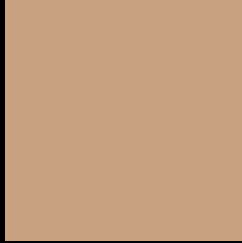
Large Text (above 18pt) WCAG AA × Fail

Any Text WCAG AA × Fail

Large Text (above 18pt) WCAG AAA × Fail

Any Text WCAG AAA × Fail

Black Background



This preview shows how the HunterLab color 62.7117, 5.4197, 19.4298 looks on a black background.

Color Contrast Check

Large Text (above 18pt) WCAG AA ✓ Pass

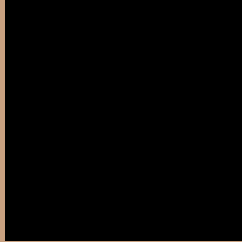
Any Text WCAG AA ✓ Pass

Large Text (above 18pt) WCAG AAA ✓ Pass

Any Text WCAG AAA ✓ Pass

If you want to check with other color combinations, try the [Color Contrast Checker](#).

HunterLab 62.7117, 5.4197, 19.4298 Background



This preview shows how black text looks on a background with the HunterLab color 62.7117, 5.4197, 19.4298.



This preview shows how white text looks on a background with the HunterLab color 62.7117, 5.4197,

Color Blindness Simulation

Color vision deficiency is a very complex topic, and I could not describe the different causes any better than Wikipedia does, so if you want to learn more, you should check out their [article about color blindness](#).

Dichromacy



Original Color

62.7117, 5.4197, 19.4298

Protanopia

62.7274, -4.7067, 18.2739

Deuteranopia

62.7734, 4.1886, 19.4651



Tritanopia

62.8024, 14.7515, 3.9829

Trichromacy



Original Color

62.7117, 5.4197, 19.4298

Protanomaly

62.5194, -0.9777, 18.4789

Deuteranomaly

62.8819, 4.5527, 19.5717

Tritanomaly

62.8093, 11.1649, 10.4499

Monochromacy



Original Color

62.7117, 5.4197, 19.4298

Achromatopsia

62.9885, -3.3609, 3.4223

Achromatomaly

62.6968, -0.7024, 9.7105

CSS Examples

Text

The CSS property to change the color of the text to HunterLab 62.7117, 5.4197, 19.4298 is called "color". The color property can be set on classes, ids or directly on the HTML element.

This example shows how text in the color `rgb(200, 161, 128)` looks like.

```
.text, #text, p{  
    color:rgb(200, 161, 128)  
}
```

If you want to add a text shadow in that color use the text-shadow property, you can generate a text shadow directly with our [CSS Text Shadow Generator](#).

Here you see how black text with a 4 pixel rgb(200, 161, 128) colored shadow looks like.

```
.shadow{ text-shadow: 4px 4px 2px rgb(200, 161, 128) }
```

Border

The CSS property to change the border of an element to HunterLab 62.7117, 5.4197, 19.4298 is called "border". The border property can be set on classes, ids or directly on the HTML element.

This example shows the color as border, it can be applied via the CSS property "border" or "border-color".

```
.border, #border, table{ border:4px solid rgb(200, 161, 128) }
```


If only the border color should be changed use the property `border-color`.

```
.border{ border-color:rgb(200, 161, 128) }
```

If you want to add a box shadow in that color use:

Here you see how a box with a 4 pixel `rgb(200, 161, 128)` colored shadow looks like.

```
.boxshadow{ -moz-box-shadow:4px 4px 4px  
4px rgb(200, 161, 128); -webkit-box-  
shadow:4px 4px 4px 4px rgb(200, 161, 128);  
box-shadow:4px 4px 4px 4px rgb(200, 161,  
128) }
```

Background

The CSS property to change the background color of an element to HunterLab 62.7117, 5.4197, 19.4298 is called "background". The background property can be set on classes, ids or directly on the HTML element.

```
.background, #background, body{  
background: rgb(200, 161, 128) }
```

If only the background color should be changed can be used:

```
.background{ background-color: rgb(200,  
161, 128) }
```

This example shows the color as background, it is applied via the CSS property "background".

To optimize and compress your CSS code, you can use our [online CSS compressor and optimizer](#) based on csstidy. If you want to create a linear or radial gradient as background or border, check our [CSS Gradient Generator](#).

Hey! You found this booklet interesting? Support Converting Colors with the new Membership Option!

The pro membership hides all ads, plus gives you double the colors in the color bucket, and more awesome pro features!

[Learn more, Memberships starting at \\$2.50/m!](#)

**Follow me
on Twitter!**

@ConvertingColor