

Converting Colors

HunterLab(62.7533, 49.7630,
15.1050)

Have a look what the booklet for
HunterLab(62.7533, 49.7630,
15.1050) contains.

HunterLab(61.7777, 46.9302, 13.9486)	3
<i>Conversions</i>	4
<i>Details</i>	6
<i>Harmonies</i>	12
<i>Previews</i>	24
<i>Color Blindness Simulation</i>	28
<i>CSS Examples</i>	31

Color

**HunterLab(61.7777, 46.9302,
13.9486)**

Conversions

Conversions Part 1

Format	Color
Hex	FF7E8F
RGB	255, 126, 143
RGB Percent	100%, 49%, 56%
CMY	0.0000, 0.5059, 0.4392
CMYK	0.00, 0.51, 0.44, 0.00
HSL	352°, 100%, 75%
HSV	352°, 51%, 100%
XYZ	53.6588, 38.1648, 30.5250
YIQ	166.5090, 71.4270, 32.6350

Conversions

Conversions Part 2

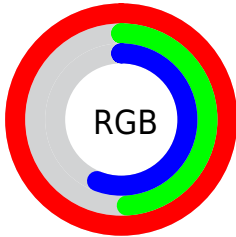
Format	Color
RYB	255, 126, 143
Decimal	16744079
CIELab	68.14, 50.56, 14.18
CIElCh	68, 52.507, 15.665
Yxy	38.1668, 0.4386, 0.3119
Android (android.graphics.Color)	4294934159 (0xFFFF7E8F)
YUV	166.5090, -11.5899, 77.6066
Hunter-Lab	61.7777, 46.9302, 13.9486

Details

The HunterLab color **61.7777, 46.9302, 13.9486** is a light color, and the websafe version is hex **FF9999**. A complement of this color would be **90.6253, -40.8117, 2.2050**, and the grayscale version is **61.9882, -3.3075, 3.3679**.

A 20% lighter version of the original color is **76.6467, 24.3385, 6.7939**, and **41.1028, 43.3329, 11.1477** is the 20% darker color. If you saturate the color by 10%, you get **56.4350, 57.1352, 16.8181**, and if you desaturate by 10%, it is **68.0285, 36.2664, 11.4701**.

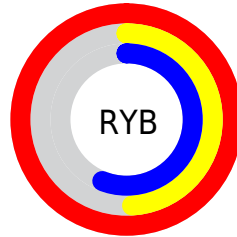
Distribution



Red (100%)

Green (49%)

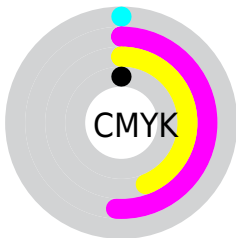
Blue (56%)



Red (100%)

Yellow (49%)

Blue (56%)

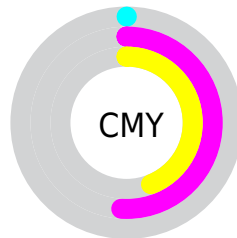


Cyan (0%)

Magenta (51%)

Yellow (44%)

Black (0%)



Cyan (0%)

Magenta (51%)

Yellow (44%)

Brightness & Saturation Gradients

These gradients show how the HunterLab color 61.7777, 46.9302, 13.9486 changes by changing the brightness by 10 percent. The first figure shows a shift by +10% for each color and the second figure -10%.

Similar to the brightness gradients but the following saturation gradients show a change of the HunterLab color 61.7777, 46.9302, 13.9486 by changing the saturation by 10% instead.

61.7777, 46.9302,
13.9486

61.7777, 46.9302,
13.9486

183.9389, 57.5754,
26.0514

51.1001, 45.2680,
12.5849

85.0669, 49.9185,
16.6384

41.1188, 43.4983,
11.1941

97.6088, 51.2636,
17.9738

31.8883, 41.6242,
9.7627

110.7129, 52.5160,
19.3087

23.4753, 39.6768,
8.2671

124.3561, 53.6816,
20.6457

15.9688, 37.7584,
6.6676

138.5176, 54.7657,
21.9870

9.4953, 36.2256,
6.6467

153.1794, 55.7731,

0.0000, INF, NaN

23.3342

0.0000, NaN, NaN

168.3248, 56.7084,
24.6887

0.0000, NaN, NaN

■ 61.7777, 46.9302,
13.9486

■ 61.7777, 46.9302,
13.9486

■ 56.4350, 57.1352,
16.8181

■ 68.0285, 36.2664,
11.4701

■ 52.1427, 66.2055,
19.9465

■ 75.0381, 25.5965,
9.4140

■ 49.0196, 73.2879,
23.0904

■ 82.6826, 15.1492,
7.7613

■ 47.0999, 77.6680,
25.9209

■ 90.8583, 5.0201,
6.4677

■ 46.2311, 79.4169,
27.9761

99.4828, -4.7728,
5.4823

100.0000, -5.3358,
5.4332

Harmonies

Analogous

The Analogous color harmony consists of three colors that are next to each other on the color wheel.



61.7793, 47.2813, -8.3489



61.7777, 46.9302, 13.9486



61.7793, 31.8416, 27.0103

Triad

The Triadic color harmony groups three colors that are evenly spaced from another and form a triangle on the color wheel.



61.7793, 46.9262, 13.9498



61.7793, -32.6050, 26.6171



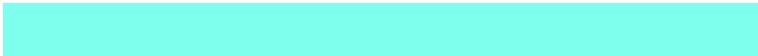
61.7793, -14.1719, -55.0255

Complementary

The Complementary color scheme is a pair of colors which are on the opposite of each other on the color wheel.



61.7777, 46.9302, 13.9486



90.6253, -40.8117, 2.2050

Split Complementary

Split-complementary colors differ from the complementary color scheme. The scheme consists of three colors, the original color and two neighbors of the complement color.



61.7793, -32.0034, -36.3215



61.7777, 46.9302, 13.9486



61.7793, -41.5078, 13.1528

Square

The Square scheme is like the rectangle color scheme, but the four colors are evenly spaced on the color wheel.



61.7793, 46.9262, 13.9498



61.7793, -15.1168, 32.2162



61.7793, -41.3056, -9.5094



61.7793, 9.4784, -54.5520

Rectangle

The Rectangle color scheme consists of four colors that form a rectangle on the color wheel.



61.7777, 46.9302, 13.9486



61.7793, 16.6006, 31.2381



61.7793, -41.3056, -9.5094



61.7793, -20.9618, -50.5362

Sweetspot

The Sweet Spot groups the original color and five complimentary colors.



61.7793, 46.9262, 13.9498



87.1892, 9.4503, 6.9978



63.4715, 59.6442, -48.2197



39.5422, 5.3616, 3.3650

0.0000, NaN, NaN



46.2646, -2.4686, 2.5136

Same Dimension

The Same Dimension uses a secret algorithm to generate beautiful new colors.



61.7793, 46.9262, 13.9498



56.2351, 57.5397, 16.9440



72.6434, 20.3271, 29.0060



42.4571, 1.8255, 2.9365



33.4363, 57.4731, 19.9590



10.4882, 18.1369, 5.4170

Inverse Universe

The Inverse Universe completely reimagines the original color for something new.



61.7793, 46.9262, 13.9498



56.2351, 57.5397, 16.9440



75.2483, -15.1203, -28.4407



42.4571, 1.8255, 2.9365



33.4363, 57.4731, 19.9590



10.4882, 18.1369, 5.4170

Previews

White Background



This preview shows how the HunterLab color 61.7777, 46.9302, 13.9486 looks on a white background.

Color Contrast Check

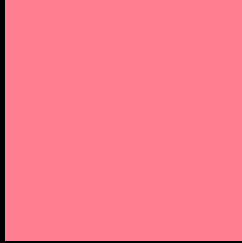
Large Text (above 18pt) WCAG AA × Fail

Any Text WCAG AA × Fail

Large Text (above 18pt) WCAG AAA × Fail

Any Text WCAG AAA × Fail

Black Background



This preview shows how the HunterLab color 61.7777, 46.9302, 13.9486 looks on a black background.

Color Contrast Check

Large Text (above 18pt) WCAG AA ✓ Pass

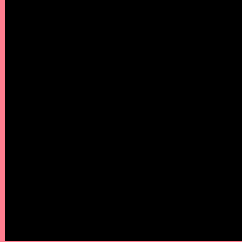
Any Text WCAG AA ✓ Pass

Large Text (above 18pt) WCAG AAA ✓ Pass

Any Text WCAG AAA ✓ Pass

If you want to check with other color combinations, try the [Color Contrast Checker](#).

HunterLab 61.7777, 46.9302, 13.9486 Background



This preview shows how black text looks on a background with the HunterLab color 61.7777, 46.9302, 13.9486.



This preview shows how white text looks on a background with the HunterLab color 61.7777, 46.9302,

13.9486.

Color Blindness Simulation

Color vision deficiency is a very complex topic, and I could not describe the different causes any better than Wikipedia does, so if you want to learn more, you should check out their [article about color blindness](#).

Dichromacy



Original Color

61.7777, 46.9302, 13.9486

Protanopia

62.0474, -2.3858, 4.6304

Deuteranopia

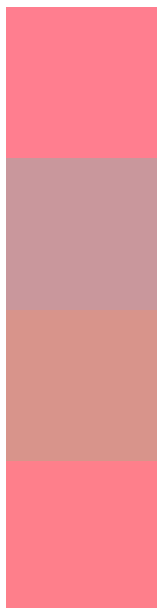
61.8750, 4.4541, 15.5269



Tritanopia

61.6662, 45.2279, 16.3952

Trichromacy



Original Color

61.7777, 46.9302, 13.9486

Protanomaly

60.7874, 14.4717, 7.0325

Deuteranomaly

61.3537, 19.3888, 14.5408

Tritanomaly

61.7363, 45.5567, 15.3809

Monochromacy



Original Color

61.7777, 46.9302, 13.9486

Achromatopsia

62.1634, -3.3169, 3.3775

Achromatomaly

60.8828, 13.5234, 6.2510

CSS Examples

Text

The CSS property to change the color of the text to HunterLab 61.7777, 46.9302, 13.9486 is called "color". The color property can be set on classes, ids or directly on the HTML element.

This example shows how text in the color `rgb(255, 126, 143)` looks like.

```
.text, #text, p{  
    color:rgb(255, 126, 143)  
}
```

If you want to add a text shadow in that color use the text-shadow property, you can generate a text shadow directly with our [CSS Text Shadow Generator](#).

Here you see how black text with a 4 pixel rgb(255, 126, 143) colored shadow looks like.

```
.shadow{ text-shadow: 4px 4px 2px rgb(255, 126, 143) }
```

Border

The CSS property to change the border of an element to HunterLab 61.7777, 46.9302, 13.9486 is called "border". The border property can be set on classes, ids or directly on the HTML element.

This example shows the color as border, it can be applied via the CSS property "border" or "border-color".

```
.border, #border, table{ border:4px solid rgb(255, 126, 143) }
```


If only the border color should be changed use the property `border-color`.

```
.border{ border-color:rgb(255, 126, 143) }
```

If you want to add a box shadow in that color use:

Here you see how a box with a 4 pixel `rgb(255, 126, 143)` colored shadow looks like.

```
.boxshadow{ -moz-box-shadow:4px 4px 4px  
4px rgb(255, 126, 143); -webkit-box-  
shadow:4px 4px 4px 4px rgb(255, 126, 143);  
box-shadow:4px 4px 4px 4px rgb(255, 126,  
143) }
```

Background

The CSS property to change the background color of an element to HunterLab 61.7777, 46.9302, 13.9486 is called "background". The background property can be set on classes, ids or directly on the HTML element.

```
.background, #background, body{  
background: rgb(255, 126, 143) }
```

If only the background color should be changed can be used:

```
.background{ background-color: rgb(255,  
126, 143) }
```

This example shows the color as background, it is applied via the CSS property "background".

To optimize and compress your CSS code, you can use our [online CSS compressor and optimizer](#) based on csstidy. If you want to create a linear or radial gradient as background or border, check our [CSS Gradient Generator](#).

Hey! You found this booklet interesting? Support Converting Colors with the new Membership Option!

The pro membership hides all ads, plus gives you double the colors in the color bucket, and more awesome pro features!

[Learn more, Memberships starting at \\$2.50/m!](#)

**Follow me
on Twitter!**

@ConvertingColor