

Converting Colors

HunterLab(62.7830, 41.5923,
0.5427)

Have a look what the booklet for
HunterLab(62.7830, 41.5923,
0.5427) contains.

HunterLab(62.7214, 41.4080, 0.5464)	3
<i>Conversions</i>	4
<i>Details</i>	6
<i>Harmonies</i>	12
<i>Previews</i>	24
<i>Color Blindness Simulation</i>	28
<i>CSS Examples</i>	31

Color

**HunterLab(62.7214, 41.4080,
0.5464)**

Conversions

Conversions Part 1

Format	Color
Hex	F287B0
RGB	242, 135, 176
RGB Percent	95%, 53%, 69%
CMY	0.0510, 0.4706, 0.3098
CMYK	0.00, 0.44, 0.27, 0.05
HSL	337°, 80%, 74%
HSV	337°, 44%, 95%
XYZ	53.1183, 39.3397, 45.8680
YIQ	171.6670, 50.6110, 35.4350

Conversions

Conversions Part 2

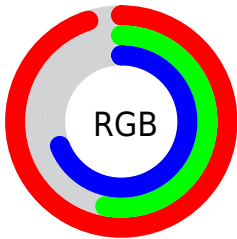
Format	Color
R_{YB}	242, 135, 176
Decimal	15894448
CIE _{Lab}	69.00, 45.48, -3.38
CIE _{LCh}	69, 45.607, 355.751
Yxy	39.3417, 0.3840, 0.2844
Android (android.graphics.Color)	4294084528 (0xFFFF287B0)
YUV	171.6670, 2.1362, 61.6820
Hunter-Lab	62.7214, 41.4080, 0.5464

Details

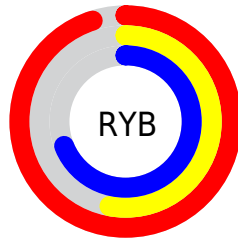
The HunterLab color **62.7214, 41.4080, 0.5464** is a light color, and the websafe version is hex **FF99CC**. A complement of this color would be **85.3658, -40.0553, 13.5191**, and the grayscale version is **64.0696, -3.4186, 3.4810**.

A 20% lighter version of the original color is **79.9457, 25.8086, -6.9049**, and **41.9012, 38.2166, -0.4939** is the 20% darker color. If you saturate the color by 10%, you get **57.2536, 51.7034, 1.2321**, and if you desaturate by 10%, it is **68.9225, 30.7576, 0.6421**.

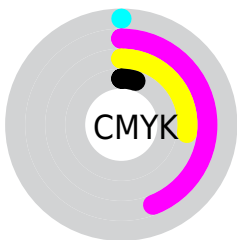
Distribution



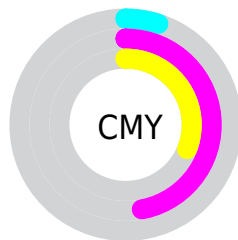
- Red (95%)
- Green (53%)
- Blue (69%)



- Red (95%)
- Yellow (53%)
- Blue (69%)



- Cyan (0%)
- Magenta (44%)
- Yellow (27%)
- Black (5%)



- Cyan (5%)
- Magenta (47%)
- Yellow (31%)

Brightness & Saturation Gradients

These gradients show how the HunterLab color 62.7214, 41.4080, 0.5464 changes by changing the brightness by 10 percent. The first figure shows a shift by +10% for each color and the second figure -10%.

Similar to the brightness gradients but the following saturation gradients show a change of the HunterLab color 62.7214, 41.4080, 0.5464 by changing the saturation by 10% instead.

62.7214, 41.4080,
0.5464

62.7214, 41.4080,
0.5464

185.2946, 50.4668,
6.0214

51.9862, 39.9338,
0.1290

86.1162, 44.0233,
1.5156

41.9434, 38.3469,
-0.2412

98.7072, 45.1849,
2.0587

32.6463, 36.6430,
-0.5576

111.8582, 46.2571,
2.6381

24.1604, 34.8357,
-0.8132

125.5464, 47.2458,
3.2520

16.5721, 32.9832,
-0.9980

139.7514, 48.1566,
3.8986

10.0040, 31.3068,
-1.0969

154.4551, 48.9942,

0.0000, INF, -NF

4.5766

0.0000, NaN, NaN

169.6411, 49.7630,
5.2845

0.0000, NaN, NaN

■ 62.7214, 41.4080,
0.5464

■ 62.7214, 41.4080,
0.5464

■ 57.2536, 51.7034,
1.2321

■ 68.9225, 30.7576,
0.6421

■ 52.6402, 61.1299,
2.8107

■ 75.7374, 20.0846,
1.3803

■ 49.0015, 68.9703,
5.3272

■ 83.0701, 9.5561,
2.6380

■ 46.4160, 74.4711,
8.6863

■ 90.8411, -0.7551,
4.3111

■ 44.8756, 77.1607,
12.6134

■ 98.6608, -10.3074,
5.9459

■ 44.3426, 77.7092,
14.9236

■ 98.8015, -9.5305,
3.9408

Harmonies

Analogous

The Analogous color harmony consists of three colors that are next to each other on the color wheel.



62.7229, 32.9954, -21.8059



62.7214, 41.4080, 0.5464



62.7229, 36.6074, 17.7178

Triad

The Triadic color harmony groups three colors that are evenly spaced from another and form a triangle on the color wheel.



62.7229, 41.4048, 0.5478



62.7229, -19.6986, 28.8116



62.7229, -24.1857, -36.5624

Complementary

The Complementary color scheme is a pair of colors which are on the opposite of each other on the color wheel.



62.7214, 41.4080, 0.5464



85.3658, -40.0553, 13.5191

Split Complementary

Split-complementary colors differ from the complementary color scheme. The scheme consists of three colors, the original color and two neighbors of the complement color.



62.7229, -35.2810, -15.3307



62.7214, 41.4080, 0.5464



62.7229, -32.9354, 21.1814

Square

The Square scheme is like the rectangle color scheme, but the four colors are evenly spaced on the color wheel.



62.7229, 41.4048, 0.5478



62.7229, -0.3781, 30.6245



62.7229, -38.2652, 6.1514



62.7229, -6.2678, -47.1969

Rectangle

The Rectangle color scheme consists of four colors that form a rectangle on the color wheel.



62.7214, 41.4080, 0.5464



62.7229, 26.8588, 24.9056



62.7229, -38.2652, 6.1514



62.7229, -28.7415, -30.1504

Sweetspot

The Sweet Spot groups the original color and five complimentary colors.



62.7229, 41.4048, 0.5478



89.1040, 8.8419, 2.9873



60.1300, 39.5661, -45.0866



40.4013, 5.2235, 1.2208

0.0000, NaN, NaN



46.2646, -2.4686, 2.5136

Same Dimension

The Same Dimension uses a secret algorithm to generate beautiful new colors.



62.7229, 41.4048, 0.5478



61.3362, 53.7393, 1.1870



64.5342, 29.5173, 19.2212



39.8235, 2.1304, 1.5547



32.5386, 57.0957, 10.3870



9.4849, 16.8335, 1.5526

Inverse Universe

The Inverse Universe completely reimagines the original color for something new.



62.7229, 41.4048, 0.5478



61.3362, 53.7393, 1.1870



82.3940, -26.8075, -10.1474



39.8235, 2.1304, 1.5547



32.5386, 57.0957, 10.3870



9.4849, 16.8335, 1.5526

Previews

White Background



This preview shows how the HunterLab color 62.7214, 41.4080, 0.5464 looks on a white background.

Color Contrast Check

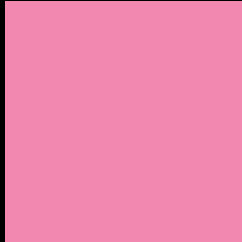
Large Text (above 18pt) WCAG AA × Fail

Any Text WCAG AA × Fail

Large Text (above 18pt) WCAG AAA × Fail

Any Text WCAG AAA × Fail

Black Background



This preview shows how the HunterLab color 62.7214, 41.4080, 0.5464 looks on a black background.

Color Contrast Check

Large Text (above 18pt) WCAG AA ✓ Pass

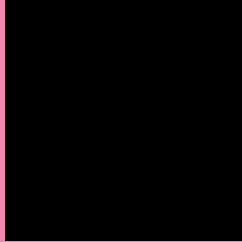
Any Text WCAG AA ✓ Pass

Large Text (above 18pt) WCAG AAA ✓ Pass

Any Text WCAG AAA ✓ Pass

If you want to check with other color combinations, try the [Color Contrast Checker](#).

HunterLab 62.7214, 41.4080, 0.5464 Background



This preview shows how black text looks on a background with the HunterLab color 62.7214, 41.4080, 0.5464.



This preview shows how white text looks on a background with the HunterLab color 62.7214, 41.4080,

0.5464.

Color Blindness Simulation

Color vision deficiency is a very complex topic, and I could not describe the different causes any better than Wikipedia does, so if you want to learn more, you should check out their [article about color blindness](#).

Dichromacy



Original Color

62.7214, 41.4080, 0.5464

Protanopia

62.8613, 0.9987, -10.5052

Deuteranopia

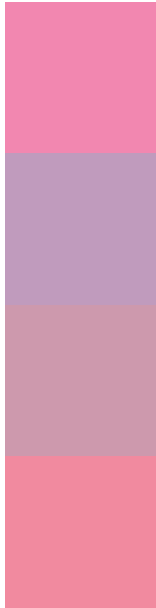
62.9933, 4.2217, 2.6270



Tritanopia

62.8358, 34.3985, 12.0955

Trichromacy



Original Color

62.7214, 41.4080, 0.5464

Protanomaly

61.9058, 14.6277, -7.7077

Deuteranomaly

62.2726, 17.4638, 1.0362

Tritanomaly

62.7542, 37.0156, 8.3267

Monochromacy



Original Color

62.7214, 41.4080, 0.5464

Achromatopsia

64.2295, -3.4271, 3.4897

Achromatomaly

62.9950, 11.5080, 1.8088

CSS Examples

Text

The CSS property to change the color of the text to HunterLab 62.7214, 41.4080, 0.5464 is called "color". The color property can be set on classes, ids or directly on the HTML element.

This example shows how text in the color `rgb(242, 135, 176)` looks like.

```
.text, #text, p{  
    color:rgb(242, 135, 176)  
}
```

If you want to add a text shadow in that color use the text-shadow property, you can generate a text shadow directly with our [CSS Text Shadow Generator](#).

Here you see how black text with a 4 pixel rgb(242, 135, 176) colored shadow looks like.

```
.shadow{ text-shadow: 4px 4px 2px rgb(242, 135, 176) }
```

Border

The CSS property to change the border of an element to HunterLab 62.7214, 41.4080, 0.5464 is called "border". The border property can be set on classes, ids or directly on the HTML element.

This example shows the color as border, it can be applied via the CSS property "border" or "border-color".

```
.border, #border, table{ border:4px solid rgb(242, 135, 176) }
```


If only the border color should be changed use the property `border-color`.

```
.border{ border-color:rgb(242, 135, 176) }
```

If you want to add a box shadow in that color use:

Here you see how a box with a 4 pixel `rgb(242, 135, 176)` colored shadow looks like.

```
.boxshadow{ -moz-box-shadow:4px 4px 4px  
4px rgb(242, 135, 176); -webkit-box-  
shadow:4px 4px 4px 4px rgb(242, 135, 176);  
box-shadow:4px 4px 4px 4px rgb(242, 135,  
176) }
```

Background

The CSS property to change the background color of an element to HunterLab 62.7214, 41.4080, 0.5464 is called "background". The background property can be set on classes, ids or directly on the HTML element.

```
.background, #background, body{  
background: rgb(242, 135, 176) }
```

If only the background color should be changed can be used:

```
.background{ background-color: rgb(242,  
135, 176) }
```

This example shows the color as background, it is applied via the CSS property "background".

To optimize and compress your CSS code, you can use our [online CSS compressor and optimizer](#) based on csstidy. If you want to create a linear or radial gradient as background or border, check our [CSS Gradient Generator](#).

Hey! You found this booklet interesting? Support Converting Colors with the new Membership Option!

The pro membership hides all ads, plus gives you double the colors in the color bucket, and more awesome pro features!

[Learn more, Memberships starting at \\$2.50/m!](#)

**Follow me
on Twitter!**

@ConvertingColor