

Converting Colors

HunterLab(62.7847, 7.9275,
8.9561)

Have a look what the booklet for
HunterLab(62.7847, 7.9275, 8.9561)
contains.

HunterLab(62.6719, 8.0574, 9.0039)	3
<i>Conversions</i>	4
<i>Details</i>	6
<i>Harmonies</i>	12
<i>Previews</i>	24
<i>Color Blindness Simulation</i>	28
<i>CSS Examples</i>	31

Color

**HunterLab(62.6719, 8.0574,
9.0039)**

Conversions

Conversions Part 1

Format	Color
Hex	C4A09C
RGB	196, 160, 156
RGB Percent	77%, 63%, 61%
CMY	0.2314, 0.3725, 0.3882
CMYK	0.00, 0.18, 0.20, 0.23
HSL	6°, 25%, 69%
HSV	6°, 20%, 77%
XYZ	41.3365, 39.2777, 36.8552
YIQ	170.3080, 22.7400, 6.3880

Conversions

Conversions Part 2

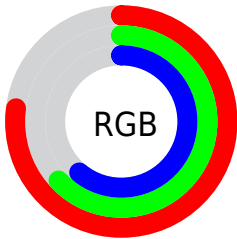
Format	Color
R_{YB}	196, 160, 156
Decimal	12886172
CIE _{Lab}	68.95, 12.65, 7.09
CIE _{LCh}	69, 14.498, 29.264
Yxy	39.2795, 0.3519, 0.3344
Android (android.graphics.Color)	4291076252 (0xFFC4A09C)
YUV	170.3080, -7.0538, 22.5319
Hunter-Lab	62.6719, 8.0574, 9.0039

Details

The HunterLab color $62.6719, 8.0574, 9.0039$ is a light color, and the websafe version is hex $CC9999$. A complement of this color would be $69.8223, -13.4784, -1.5588$, and the grayscale version is $63.5519, -3.3910, 3.4529$.

A 20% lighter version of the original color is $86.1027, 7.7914, 11.2068$, and $41.8280, 8.1719, 6.9734$ is the 20% darker color. If you saturate the color by 10%, you get $57.4283, 14.3966, 11.4368$, and if you desaturate by 10%, it is $68.2302, 2.0166, 6.5655$.

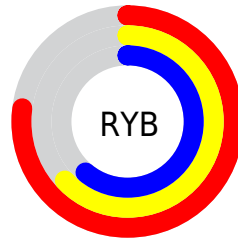
Distribution



Red (77%)

Green (63%)

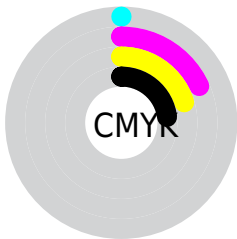
Blue (61%)



Red (77%)

Yellow (63%)

Blue (61%)

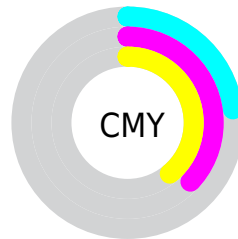


Cyan (0%)

Magenta (18%)

Yellow (20%)

Black (23%)



Cyan (23%)

Magenta (37%)

Yellow (39%)

Brightness & Saturation Gradients

These gradients show how the HunterLab color 62.6719, 8.0574, 9.0039 changes by changing the brightness by 10 percent. The first figure shows a shift by +10% for each color and the second figure -10%.

Similar to the brightness gradients but the following saturation gradients show a change of the HunterLab color 62.6719, 8.0574, 9.0039 by changing the saturation by 10% instead.

■ 62.6719, 8.0574,
9.0039

■ 62.6719, 8.0574,
9.0039

185.2234, 6.1849,
18.3139

■ 51.9396, 7.9853,
8.0468

■ 86.0610, 7.9952,
10.9601

■ 41.9000, 7.8378,
7.0980

■ 98.6495, 7.8773,
11.9601

■ 32.6064, 7.6014,
6.1539

111.7980, 7.7072,
12.9764

■ 24.1243, 7.2607,
5.2066

125.4839, 7.4885,
14.0095

■ 16.5403, 6.7937,
4.2419

139.6866, 7.2244,
15.0596

■ 9.9771, 6.1681,
3.5150

154.3881, 6.9176,

0.0000, INF, NaN

16.1270

0.0000, NaN, NaN

169.5720, 6.5704,
17.2118

0.0000, NaN, NaN

■ 62.6719, 8.0574,
9.0039

■ 62.6719, 8.0574,
9.0039

■ 57.4283, 14.3966,
11.4368

■ 68.2302, 2.0166,
6.5655

■ 52.5491, 21.0296,
13.8292

■ 74.0550, -3.7355,
4.1355

■ 48.1008, 27.8918,
16.1270

■ 80.1124, -9.2294,
1.7222

■ 44.1592, 34.8357,
18.2435

■ 86.3736, -14.4968,
-0.6721

■ 40.8068, 41.5934,
20.0568

■ 92.8155, -19.5693,
-3.0481

■ 38.1222, 47.7627,
21.4220

■ 95.1188, -22.7570,
-0.7581

■ 36.1617, 52.8560,
22.2124

■ 34.9611, 56.2924,
22.5283

Harmonies

Analogous

The Analogous color harmony consists of three colors that are next to each other on the color wheel.



62.6733, 9.7877, 3.2570



62.6719, 8.0574, 9.0039



62.6733, 3.2388, 12.8845

Triad

The Triadic color harmony groups three colors that are evenly spaced from another and form a triangle on the color wheel.



62.6733, 8.0553, 9.0049



62.6733, -13.8378, 9.2463



62.6733, -3.5095, -9.8300

Complementary

The Complementary color scheme is a pair of colors which are on the opposite of each other on the color wheel.



62.6719, 8.0574, 9.0039



69.8223, -13.4784, -1.5588

Split Complementary

Split-complementary colors differ from the complementary color scheme. The scheme consists of three colors, the original color and two neighbors of the complement color.



62.6733, -9.6725, -7.8187



62.6719, 8.0574, 9.0039



62.6733, -15.4827, 3.5656

Square

The Square scheme is like the rectangle color scheme, but the four colors are evenly spaced on the color wheel.



62.6733, 8.0553, 9.0049



62.6733, -9.4026, 13.0134



62.6733, -13.9891, -2.7503



62.6733, 2.9467, -8.0005

Rectangle

The Rectangle color scheme consists of four colors that form a rectangle on the color wheel.



62.6719, 8.0574, 9.0039



62.6733, -0.9774, 14.1047



62.6733, -13.9891, -2.7503



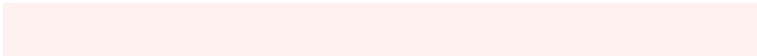
62.6733, -5.6828, -9.5776

Sweetspot

The Sweet Spot groups the original color and five complimentary colors.



62.6733, 8.0553, 9.0049



95.1741, -0.6706, 7.4236



62.7048, 15.9989, -8.2351



43.7923, -0.0715, 3.5350

0.0000, NaN, NaN



46.2646, -2.4686, 2.5136

Same Dimension

The Same Dimension uses a secret algorithm to generate beautiful new colors.



62.6733, 8.0553, 9.0049



81.4986, 14.1804, 13.4222



68.3952, -2.0211, 14.8436



31.9945, 0.6514, 2.9334



28.1313, 44.7685, 18.1181



6.3075, 7.8669, 4.0244

Inverse Universe

The Inverse Universe completely reimagines the original color for something new.



69.8223, -13.4784, -1.5588



92.9175, -20.2865, -3.4683



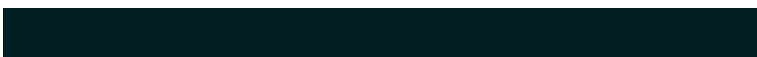
63.6859, -3.7463, -9.4426



33.5419, -3.9931, 0.6509



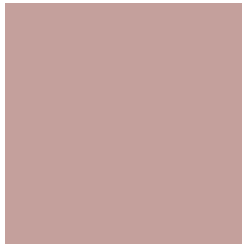
47.6242, -21.6409, -12.8096



10.1524, -4.8148, -2.2957

Previews

White Background



This preview shows how the HunterLab color 62.6719, 8.0574, 9.0039 looks on a white background.

Color Contrast Check

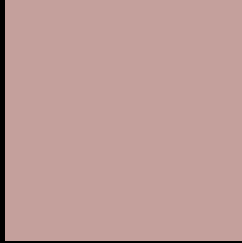
Large Text (above 18pt) WCAG AA × Fail

Any Text WCAG AA × Fail

Large Text (above 18pt) WCAG AAA × Fail

Any Text WCAG AAA × Fail

Black Background



This preview shows how the HunterLab color 62.6719, 8.0574, 9.0039 looks on a black background.

Color Contrast Check

Large Text (above 18pt) WCAG AA ✓ Pass

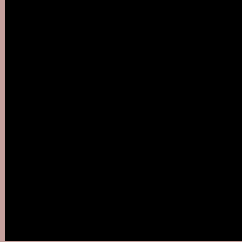
Any Text WCAG AA ✓ Pass

Large Text (above 18pt) WCAG AAA ✓ Pass

Any Text WCAG AAA ✓ Pass

If you want to check with other color combinations, try the [Color Contrast Checker](#).

HunterLab 62.6719, 8.0574, 9.0039 Background



This preview shows how black text looks on a background with the HunterLab color 62.6719, 8.0574, 9.0039.



This preview shows how white text looks on a background with the HunterLab color 62.6719, 8.0574,

Color Blindness Simulation

Color vision deficiency is a very complex topic, and I could not describe the different causes any better than Wikipedia does, so if you want to learn more, you should check out their [article about color blindness](#).

Dichromacy



Original Color

62.6719, 8.0574, 9.0039

Protanopia

62.7914, -3.0506, 7.2352

Deuteranopia

62.8823, 4.4471, 9.1699



Tritanopia

62.7390, 11.8963, 2.9281

Trichromacy



Original Color

62.6719, 8.0574, 9.0039

Protanomaly

62.6396, 0.8587, 7.5664

Deuteranomaly

62.8072, 5.6425, 9.1091

Tritanomaly

62.7560, 10.2529, 5.2182

Monochromacy



Original Color

62.6719, 8.0574, 9.0039

Achromatopsia

63.4017, -3.3830, 3.4447

Achromatomaly

62.9069, 0.6280, 5.2233

CSS Examples

Text

The CSS property to change the color of the text to HunterLab 62.6719, 8.0574, 9.0039 is called "color". The color property can be set on classes, ids or directly on the HTML element.

This example shows how text in the color `rgb(196, 160, 156)` looks like.

```
.text, #text, p{  
    color:rgb(196, 160, 156)  
}
```

If you want to add a text shadow in that color use the text-shadow property, you can generate a text shadow directly with our [CSS Text Shadow Generator](#).

Here you see how black text with a 4 pixel rgb(196, 160, 156) colored shadow looks like.

```
.shadow{ text-shadow: 4px 4px 2px rgb(196, 160, 156) }
```

Border

The CSS property to change the border of an element to HunterLab 62.6719, 8.0574, 9.0039 is called "border".

The border property can be set on classes, ids or directly on the HTML element.

This example shows the color as border, it can be applied via the CSS property "border" or "border-color".

```
.border, #border, table{ border:4px solid rgb(196, 160, 156) }
```


If only the border color should be changed use the property `border-color`.

```
.border{ border-color:rgb(196, 160, 156) }
```

If you want to add a box shadow in that color use:

Here you see how a box with a 4 pixel `rgb(196, 160, 156)` colored shadow looks like.

```
.boxshadow{ -moz-box-shadow:4px 4px 4px  
4px rgb(196, 160, 156); -webkit-box-  
shadow:4px 4px 4px 4px rgb(196, 160, 156);  
box-shadow:4px 4px 4px 4px rgb(196, 160,  
156) }
```

Background

The CSS property to change the background color of an element to HunterLab 62.6719, 8.0574, 9.0039 is called "background". The background property can be set on classes, ids or directly on the HTML element.

```
.background, #background, body{  
background: rgb(196, 160, 156) }
```

If only the background color should be changed can be used:

```
.background{ background-color: rgb(196,  
160, 156) }
```

This example shows the color as background, it is applied via the CSS property "background".

To optimize and compress your CSS code, you can use our [online CSS compressor and optimizer](#) based on csstidy. If you want to create a linear or radial gradient as background or border, check our [CSS Gradient Generator](#).

Hey! You found this booklet interesting? Support Converting Colors with the new Membership Option!

The pro membership hides all ads, plus gives you double the colors in the color bucket, and more awesome pro features!

[Learn more, Memberships starting at \\$2.50/m!](#)

**Follow me
on Twitter!**

@ConvertingColor