

Converting Colors

HunterLab(62.7964, 9.6484,
13.0060)

Have a look what the booklet for
HunterLab(62.7964, 9.6484,
13.0060) contains.

HunterLab(62.7918, 9.3483, 13.1782)	3
<i>Conversions</i>	4
<i>Details</i>	6
<i>Harmonies</i>	12
<i>Previews</i>	24
<i>Color Blindness Simulation</i>	28
<i>CSS Examples</i>	31

Color

**HunterLab(62.7918, 9.3483,
13.1782)**

Conversions

Conversions Part 1

Format	Color
Hex	CA9F92
RGB	202, 159, 146
RGB Percent	79%, 62%, 57%
CMY	0.2078, 0.3765, 0.4274
CMYK	0.00, 0.21, 0.28, 0.21
HSL	14°, 35%, 68%
HSV	14°, 28%, 79%
XYZ	41.9435, 39.4281, 32.5938
YIQ	170.3750, 29.8010, 5.0730

Conversions

Conversions Part 2

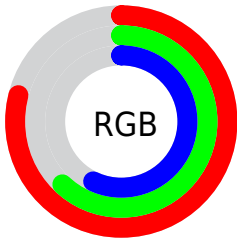
Format	Color
R_{YB}	202, 163, 146
Decimal	13279122
CIE _{Lab}	69.06, 14.03, 12.87
CIE _{LCh}	69, 19.034, 42.534
Yxy	39.4299, 0.3680, 0.3460
Android (android.graphics.Color)	4291469202 (0xFFCA9F92)
YUV	170.3750, -12.0169, 27.7351
Hunter-Lab	62.7918, 9.3483, 13.1782

Details

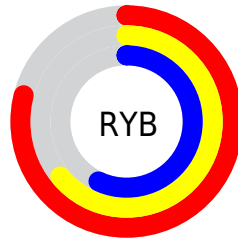
The HunterLab color $62.7918, 9.3483, 13.1782$ is a light color, and the websafe version is hex $CC9999$. A complement of this color would be $68.3878, -13.4164, -6.5384$, and the grayscale version is $63.5974, -3.3934, 3.4554$.

A 20% lighter version of the original color is $85.7457, 7.5572, 15.1844$, and $41.9082, 9.2983, 10.3302$ is the 20% darker color. If you saturate the color by 10%, you get $58.1824, 14.7848, 16.0647$, and if you desaturate by 10%, it is $67.6671, 4.2303, 10.0752$.

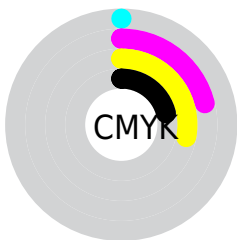
Distribution



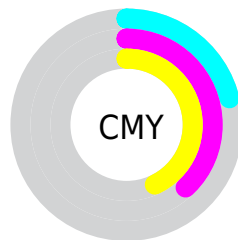
- Red (79%)
- Green (62%)
- Blue (57%)



- Red (79%)
- Yellow (64%)
- Blue (57%)



- Cyan (0%)
- Magenta (21%)
- Yellow (28%)
- Black (21%)



- Cyan (21%)
- Magenta (38%)
- Yellow (43%)

Brightness & Saturation Gradients

These gradients show how the HunterLab color 62.7918, 9.3483, 13.1782 changes by changing the brightness by 10 percent. The first figure shows a shift by +10% for each color and the second figure -10%.

Similar to the brightness gradients but the following saturation gradients show a change of the HunterLab color 62.7918, 9.3483, 13.1782 by changing the saturation by 10% instead.

■ 62.7918, 9.3483,
13.1782

■ 62.7918, 9.3483,
13.1782

185.3955, 7.9654,
24.7553

■ 52.0522, 9.2099,
11.8930

■ 86.1943, 9.4091,
15.7275

■ 42.0049, 8.9928,
10.5886

■ 98.7890, 9.3491,
16.9995

■ 32.7029, 8.6827,
9.2537

111.9435, 9.2347,
18.2744

■ 24.2115, 8.2636,
7.8687

125.6350, 9.0698,
19.5544

■ 16.6173, 7.7129,
6.4002

139.8433, 8.8578,
20.8413

■ 10.0421, 6.9989,
5.8919

154.5501, 8.6014,

0.0000, INF, NaN

22.1365

0.0000, NaN, NaN

169.7391, 8.3032,
23.4409

0.0000, NaN, NaN

■ 62.7918, 9.3483,
13.1782

■ 62.7918, 9.3483,
13.1782

■ 58.1824, 14.7848,
16.0647

■ 67.6671, 4.2303,
10.0752

■ 53.8737, 20.5449,
18.6693

■ 72.7708, -0.5794,
6.7998

■ 49.9127, 26.5911,
20.9131

■ 78.0769, -5.1093,
3.3878

■ 46.3509, 32.8344,
22.6998

■ 83.5623, -9.3886,
-0.1353

■ 43.2427, 39.1106,
23.9266

■ 89.2081, -13.4467,
-3.7506

■ 40.6405, 45.1654,
24.5078

■ 94.5702, -19.7150,
-1.3850

■ 38.5820, 50.6513,
24.4578

■ 95.5492, -21.1835,
-0.1996

■ 38.1867, 51.7627,
24.4367

Harmonies

Analogous

The Analogous color harmony consists of three colors that are next to each other on the color wheel.



62.7933, 13.6772, 6.7477



62.7918, 9.3483, 13.1782



62.7933, 1.7041, 16.6867

Triad

The Triadic color harmony groups three colors that are evenly spaced from another and form a triangle on the color wheel.



62.7933, 9.3460, 13.1792



62.7933, -18.4099, 7.9731



62.7933, 0.2876, -14.0236

Complementary

The Complementary color scheme is a pair of colors which are on the opposite of each other on the color wheel.



62.7918, 9.3483, 13.1782



68.3878, -13.4164, -6.5384

Split Complementary

Split-complementary colors differ from the complementary color scheme. The scheme consists of three colors, the original color and two neighbors of the complement color.



62.7933, -8.2566, -13.5785



62.7918, 9.3483, 13.1782



62.7933, -18.7433, -0.1046

Square

The Square scheme is like the rectangle color scheme, but the four colors are evenly spaced on the color wheel.



62.7933, 9.3460, 13.1792



62.7933, -14.1813, 13.9716



62.7933, -15.1183, -8.2155



62.7933, 8.2609, -9.3601

Rectangle

The Rectangle color scheme consists of four colors that form a rectangle on the color wheel.



62.7918, 9.3483, 13.1782



62.7933, -4.0857, 17.2298



62.7933, -15.1183, -8.2155



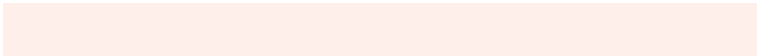
62.7933, -2.6187, -14.4827

Sweetspot

The Sweet Spot groups the original color and five complimentary colors.



62.7933, 9.3460, 13.1792



94.4276, -0.5187, 9.0165



60.6849, 22.9768, -9.7250



43.2104, 0.1913, 4.4774

0.0000, NaN, NaN



46.2646, -2.4686, 2.5136

Same Dimension

The Same Dimension uses a secret algorithm to generate beautiful new colors.



62.7933, 9.3460, 13.1792



78.2248, 16.1634, 19.3394



70.5734, -4.2919, 20.5653



34.1019, 0.0986, 3.4910



30.8185, 40.9544, 19.7072



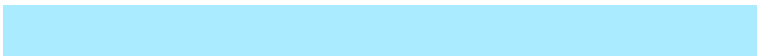
7.8081, 7.0248, 4.9343

Inverse Universe

The Inverse Universe completely reimagines the original color for something new.



68.3878, -13.4164, -6.5384



86.9142, -19.3214, -11.3204



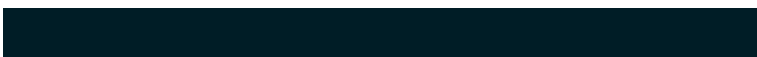
60.1410, -0.1431, -18.0305



35.0259, -3.6373, 0.2406



42.4146, -13.2744, -24.3588



10.1903, -3.7788, -4.5795

Previews

White Background



This preview shows how the HunterLab color 62.7918, 9.3483, 13.1782 looks on a white background.

Color Contrast Check

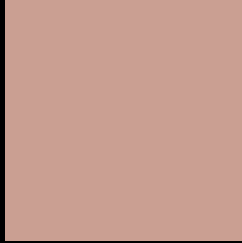
Large Text (above 18pt) WCAG AA × Fail

Any Text WCAG AA × Fail

Large Text (above 18pt) WCAG AAA × Fail

Any Text WCAG AAA × Fail

Black Background



This preview shows how the HunterLab color 62.7918, 9.3483, 13.1782 looks on a black background.

Color Contrast Check

Large Text (above 18pt) WCAG AA ✓ Pass

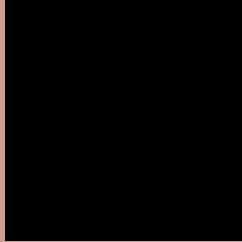
Any Text WCAG AA ✓ Pass

Large Text (above 18pt) WCAG AAA ✓ Pass

Any Text WCAG AAA ✓ Pass

If you want to check with other color combinations, try the [Color Contrast Checker](#).

HunterLab 62.7918, 9.3483, 13.1782 Background



This preview shows how black text looks on a background with the HunterLab color 62.7918, 9.3483, 13.1782.



This preview shows how white text looks on a background with the HunterLab color 62.7918, 9.3483,

Color Blindness Simulation

Color vision deficiency is a very complex topic, and I could not describe the different causes any better than Wikipedia does, so if you want to learn more, you should check out their [article about color blindness](#).

Dichromacy



Original Color

62.7918, 9.3483, 13.1782

Protanopia

62.8249, -3.4174, 11.0218

Deuteranopia

62.6278, 4.4751, 13.3090



Tritanopia

62.8024, 14.7515, 3.9829

Trichromacy



Original Color

62.7918, 9.3483, 13.1782

Protanomaly

62.7650, 0.7550, 11.8292

Deuteranomaly

62.6656, 6.0410, 13.3750

Tritanomaly

62.7284, 12.6736, 7.4401

Monochromacy



Original Color

62.7918, 9.3483, 13.1782

Achromatopsia

63.4017, -3.3830, 3.4447

Achromatomaly

63.0799, 0.9908, 7.1945

CSS Examples

Text

The CSS property to change the color of the text to HunterLab 62.7918, 9.3483, 13.1782 is called "color". The color property can be set on classes, ids or directly on the HTML element.

This example shows how text in the color `rgb(202, 159, 146)` looks like.

```
.text, #text, p{  
    color:rgb(202, 159, 146)  
}
```

If you want to add a text shadow in that color use the text-shadow property, you can generate a text shadow directly with our [CSS Text Shadow Generator](#).

Here you see how black text with a 4 pixel rgb(202, 159, 146) colored shadow looks like.

```
.shadow{ text-shadow: 4px 4px 2px rgb(202, 159, 146) }
```

Border

The CSS property to change the border of an element to HunterLab 62.7918, 9.3483, 13.1782 is called "border". The border property can be set on classes, ids or directly on the HTML element.

This example shows the color as border, it can be applied via the CSS property "border" or "border-color".

```
.border, #border, table{ border:4px solid rgb(202, 159, 146) }
```


If only the border color should be changed use the property `border-color`.

```
.border{ border-color:rgb(202, 159, 146) }
```

If you want to add a box shadow in that color use:

Here you see how a box with a 4 pixel `rgb(202, 159, 146)` colored shadow looks like.

```
.boxshadow{ -moz-box-shadow:4px 4px 4px  
4px rgb(202, 159, 146); -webkit-box-  
shadow:4px 4px 4px 4px rgb(202, 159, 146);  
box-shadow:4px 4px 4px 4px rgb(202, 159,  
146) }
```

Background

The CSS property to change the background color of an element to HunterLab 62.7918, 9.3483, 13.1782 is called "background". The background property can be set on classes, ids or directly on the HTML element.

```
.background, #background, body{  
background: rgb(202, 159, 146) }
```

If only the background color should be changed can be used:

```
.background{ background-color: rgb(202,  
159, 146) }
```

This example shows the color as background, it is applied via the CSS property "background".

To optimize and compress your CSS code, you can use our [online CSS compressor and optimizer](#) based on csstidy. If you want to create a linear or radial gradient as background or border, check our [CSS Gradient Generator](#).

Hey! You found this booklet interesting? Support Converting Colors with the new Membership Option!

The pro membership hides all ads, plus gives you double the colors in the color bucket, and more awesome pro features!

[Learn more, Memberships starting at \\$2.50/m!](#)

**Follow me
on Twitter!**

@ConvertingColor