

Converting Colors

HunterLab(62.8025, 10.0647,
7.9085)

Have a look what the booklet for
HunterLab(62.8025, 10.0647,
7.9085) contains.

HunterLab(62.8025, 10.0647, 7.9085)	3
<i>Conversions</i>	4
<i>Details</i>	6
<i>Harmonies</i>	12
<i>Previews</i>	24
<i>Color Blindness Simulation</i>	28
<i>CSS Examples</i>	31

Color

**HunterLab(62.8025, 10.0647,
7.9085)**

Conversions

Conversions Part 1

Format	Color
Hex	C79F9F
RGB	199, 159, 159
RGB Percent	78%, 62%, 62%
CMY	0.2196, 0.3765, 0.3765
CMYK	0.00, 0.20, 0.20, 0.22
HSL	0°, 26%, 70%
HSV	0°, 20%, 78%
XYZ	42.2093, 39.4415, 38.1891
YIQ	170.9600, 23.8400, 8.4800

Conversions

Conversions Part 2

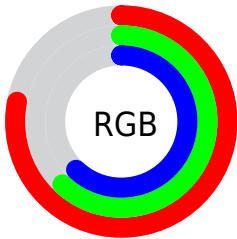
Format	Color
R _Y B	199, 159, 159
Decimal	13082527
CIE Lab	69.07, 14.79, 5.63
CIE LCh	69, 15.822, 20.840
Yxy	39.4433, 0.3522, 0.3291
Android (android.graphics.Color)	4291272607 (0xFFC79F9F)
YUV	170.9600, -5.8963, 24.5911
Hunter-Lab	62.8025, 10.0647, 7.9085

Details

The HunterLab color $62.8025, 10.0647, 7.9085$ is a light color, and the websafe version is hex $CC9999$. A complement of this color would be $72.3463, -15.5041, 0.0263$, and the grayscale version is $63.8166, -3.4051, 3.4673$.

A 20% lighter version of the original color is $86.1442, 9.6789, 9.4648$, and $41.8657, 9.7311, 5.8758$ is the 20% darker color. If you saturate the color by 10%, you get $57.0135, 17.5358, 9.9967$, and if you desaturate by 10%, it is $68.9885, 2.8971, 5.9539$.

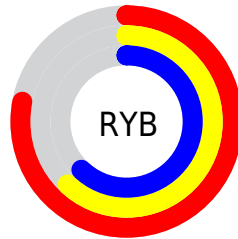
Distribution



Red (78%)

Green (62%)

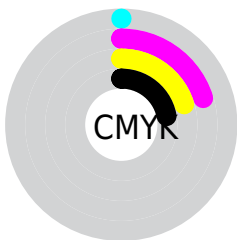
Blue (62%)



Red (78%)

Yellow (62%)

Blue (62%)

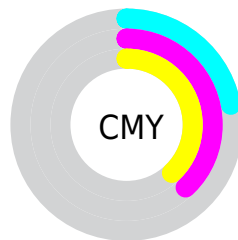


Cyan (0%)

Magenta (20%)

Yellow (20%)

Black (22%)



Cyan (22%)

Magenta (38%)

Yellow (38%)

Brightness & Saturation Gradients

These gradients show how the HunterLab color 62.8025, 10.0647, 7.9085 changes by changing the brightness by 10 percent. The first figure shows a shift by +10% for each color and the second figure -10%.

Similar to the brightness gradients but the following saturation gradients show a change of the HunterLab color 62.8025, 10.0647, 7.9085 by changing the saturation by 10% instead.

■ 62.8025, 10.0647,
7.9085

■ 62.8025, 10.0647,
7.9085

185.4108, 8.9533,
16.6645

■ 52.0623, 9.8899,
7.0308

■ 86.2062, 10.1939,
9.7205

■ 42.0142, 9.6343,
6.1680

■ 98.8014, 10.1660,
10.6543

■ 32.7115, 9.2835,
5.3180

111.9564, 10.0824,
11.6074

■ 24.2193, 8.8211,
4.4758

125.6485, 9.9473,
12.5801

■ 16.6241, 8.2245,
3.6316

139.8572, 9.7641,
13.5722

■ 10.0479, 7.4622,
2.9035

154.5645, 9.5357,

0.0000, INF, NaN

14.5837

0.0000, NaN, NaN

169.7540, 9.2647,
15.6146

0.0000, NaN, NaN

■ 62.8025, 10.0647,
7.9085

■ 62.8025, 10.0647,
7.9085

■ 57.0135, 17.5358,
9.9967

■ 68.9885, 2.8971,
5.9539

■ 51.6936, 25.2713,
12.2056

■ 75.5062, -3.9651,
4.1238

■ 46.9376, 33.1301,
14.4964

■ 82.3087, -10.5517,
2.4065

■ 42.8534, 40.8246,
16.7803

■ 89.3578, -16.8983,
0.7875

■ 39.5527, 47.8774,
18.9054

■ 95.3321, -21.9761,
-0.4810

■ 37.1275, 53.6607,
20.6679

■ 35.6118, 57.5861,
21.8732

■ 34.8462, 59.6722,
22.5167

Harmonies

Analogous

The Analogous color harmony consists of three colors that are next to each other on the color wheel.



62.8039, 10.8505, 1.2939



62.8025, 10.0647, 7.9085



62.8039, 5.5948, 12.7649

Triad

The Triadic color harmony groups three colors that are evenly spaced from another and form a triangle on the color wheel.



62.8039, 10.0625, 7.9096



62.8039, -13.6952, 11.1524



62.8039, -5.5350, -10.9630

Complementary

The Complementary color scheme is a pair of colors which are on the opposite of each other on the color wheel.



62.8025, 10.0647, 7.9085



72.3463, -15.5041, 0.0263

Split Complementary

Split-complementary colors differ from the complementary color scheme. The scheme consists of three colors, the original color and two neighbors of the complement color.



62.8039, -11.8290, -7.6295



62.8025, 10.0647, 7.9085



62.8039, -16.3993, 5.4715

Square

The Square scheme is like the rectangle color scheme, but the four colors are evenly spaced on the color wheel.



62.8039, 10.0625, 7.9096



62.8039, -8.1864, 14.4860



62.8039, -15.7318, -1.4306



62.8039, 1.6282, -10.1212

Rectangle

The Rectangle color scheme consists of four colors that form a rectangle on the color wheel.



62.8025, 10.0647, 7.9085



62.8039, 1.2367, 14.5923



62.8039, -15.7318, -1.4306



62.8039, -7.8174, -10.2809

Sweetspot

The Sweet Spot groups the original color and five complimentary colors.



62.8039, 10.0625, 7.9096



94.6985, 0.1438, 6.8876



64.0799, 16.7226, -10.2157



43.5490, 0.3465, 3.2614

0.0000, NaN, NaN



46.2646, -2.4686, 2.5136

Same Dimension

The Same Dimension uses a secret algorithm to generate beautiful new colors.



62.8039, 10.0625, 7.9096



79.7767, 17.4713, 11.6192



68.4733, -0.0910, 13.7891



32.6146, 1.1244, 2.7325



27.9428, 47.8498, 18.0559



6.0808, 10.4105, 3.9292

Inverse Universe

The Inverse Universe completely reimagines the original color for something new.



72.3463, -15.5041, 0.0263



94.9627, -23.3194, -0.9610



66.1325, -5.8035, -7.7936



34.7382, -4.5430, 0.9856



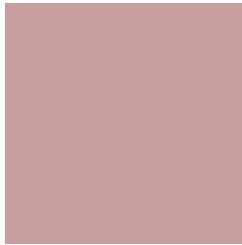
53.7695, -28.5027, -5.6781



11.7005, -6.2025, -1.2352

Previews

White Background



This preview shows how the HunterLab color 62.8025, 10.0647, 7.9085 looks on a white background.

Color Contrast Check

Large Text (above 18pt) WCAG AA × Fail

Any Text WCAG AA × Fail

Large Text (above 18pt) WCAG AAA × Fail

Any Text WCAG AAA × Fail

Black Background



This preview shows how the HunterLab color 62.8025, 10.0647, 7.9085 looks on a black background.

Color Contrast Check

Large Text (above 18pt) WCAG AA ✓ Pass

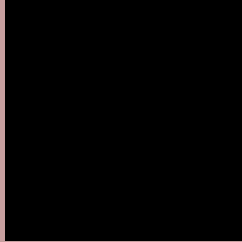
Any Text WCAG AA ✓ Pass

Large Text (above 18pt) WCAG AAA ✓ Pass

Any Text WCAG AAA ✓ Pass

If you want to check with other color combinations, try the [Color Contrast Checker](#).

HunterLab 62.8025, 10.0647, 7.9085 Background



This preview shows how black text looks on a background with the HunterLab color 62.8025, 10.0647, 7.9085.



This preview shows how white text looks on a background with the HunterLab color 62.8025, 10.0647,

7.9085.

Color Blindness Simulation

Color vision deficiency is a very complex topic, and I could not describe the different causes any better than Wikipedia does, so if you want to learn more, you should check out their [article about color blindness](#).

Dichromacy



Original Color

62.8025, 10.0647, 7.9085

Protanopia

62.9046, -2.4316, 5.6151

Deuteranopia

62.8346, 4.3957, 8.2723



Tritanopia

62.6862, 13.1185, 2.8868

Trichromacy



Original Color

62.8025, 10.0647, 7.9085

Protanomaly

62.8204, 1.6422, 6.4769

Deuteranomaly

62.9657, 6.2788, 8.4496

Tritanomaly

62.8381, 11.9795, 4.8909

Monochromacy



Original Color

62.8025, 10.0647, 7.9085

Achromatopsia

63.8154, -3.4050, 3.4672

Achromatomaly

63.4438, 1.0912, 4.9473

CSS Examples

Text

The CSS property to change the color of the text to HunterLab 62.8025, 10.0647, 7.9085 is called "color". The color property can be set on classes, ids or directly on the HTML element.

This example shows how text in the color `rgb(199, 159, 159)` looks like.

```
.text, #text, p{  
    color:rgb(199, 159, 159)  
}
```

If you want to add a text shadow in that color use the text-shadow property, you can generate a text shadow directly with our [CSS Text Shadow Generator](#).

Here you see how black text with a 4 pixel rgb(199, 159, 159) colored shadow looks like.

```
.shadow{ text-shadow: 4px 4px 2px rgb(199, 159, 159) }
```

Border

The CSS property to change the border of an element to HunterLab 62.8025, 10.0647, 7.9085 is called "border". The border property can be set on classes, ids or directly on the HTML element.

This example shows the color as border, it can be applied via the CSS property "border" or "border-color".

```
.border, #border, table{ border:4px solid rgb(199, 159, 159) }
```


If only the border color should be changed use the property `border-color`.

```
.border{ border-color:rgb(199, 159, 159) }
```

If you want to add a box shadow in that color use:

Here you see how a box with a 4 pixel `rgb(199, 159, 159)` colored shadow looks like.

```
.boxshadow{ -moz-box-shadow:4px 4px 4px  
4px rgb(199, 159, 159); -webkit-box-  
shadow:4px 4px 4px 4px rgb(199, 159, 159);  
box-shadow:4px 4px 4px 4px rgb(199, 159,  
159) }
```

Background

The CSS property to change the background color of an element to HunterLab 62.8025, 10.0647, 7.9085 is called "background". The background property can be set on classes, ids or directly on the HTML element.

```
.background, #background, body{  
background: rgb(199, 159, 159) }
```

If only the background color should be changed can be used:

```
.background{ background-color: rgb(199,  
159, 159) }
```

This example shows the color as background, it is applied via the CSS property "background".

To optimize and compress your CSS code, you can use our [online CSS compressor and optimizer](#) based on csstidy. If you want to create a linear or radial gradient as background or border, check our [CSS Gradient Generator](#).

Hey! You found this booklet interesting? Support Converting Colors with the new Membership Option!

The pro membership hides all ads, plus gives you double the colors in the color bucket, and more awesome pro features!

[Learn more, Memberships starting at \\$2.50/m!](#)

**Follow me
on Twitter!**

@ConvertingColor