

Converting Colors

HunterLab(62.8035, 25.1780,
1.5955)

Have a look what the booklet for
HunterLab(62.8035, 25.1780,
1.5955) contains.

HunterLab(62.6554, 25.2382, 1.6382)	3
<i>Conversions</i>	4
<i>Details</i>	6
<i>Harmonies</i>	12
<i>Previews</i>	24
<i>Color Blindness Simulation</i>	28
<i>CSS Examples</i>	31

Color

**HunterLab(62.6554, 25.2382,
1.6382)**

Conversions

Conversions Part 1

Format	Color
Hex	DB94AD
RGB	219, 148, 173
RGB Percent	86%, 58%, 68%
CMY	0.1412, 0.4196, 0.3216
CMYK	0.00, 0.32, 0.21, 0.14
HSL	339°, 50%, 72%
HSV	339°, 32%, 86%
XYZ	47.3461, 39.2570, 44.6171
YIQ	172.0790, 34.2910, 22.8270

Conversions

Conversions Part 2

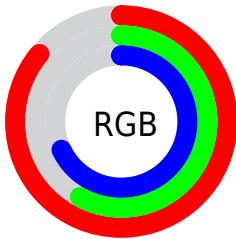
Format	Color
R _Y B	219, 148, 173
Decimal	14390445
CIE Lab	68.94, 30.25, -2.11
CIE LCh	69, 30.319, 356.015
Yxy	39.2588, 0.3608, 0.2992
Android (android.graphics.Color)	4292580525 (0xFFDB94AD)
YUV	172.0790, 0.4541, 41.1497
Hunter-Lab	62.6554, 25.2382, 1.6382

Details

The HunterLab color **62.6554, 25.2382, 1.6382** is a light color, and the websafe version is hex **CC9999**. A complement of this color would be **78.0096, -28.3235, 8.7797**, and the grayscale version is **64.2516, -3.4283, 3.4909**.

A 20% lighter version of the original color is **83.4106, 17.9556, -0.4618**, and **41.8721, 23.6568, 0.6017** is the 20% darker color. If you saturate the color by 10%, you get **57.0136, 34.6315, 1.7164**, and if you desaturate by 10%, it is **68.8260, 15.8703, 2.0961**.

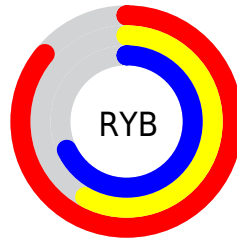
Distribution



Red (86%)

Green (58%)

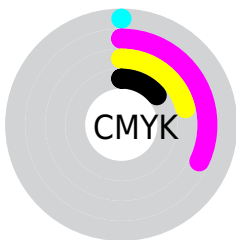
Blue (68%)



Red (86%)

Yellow (58%)

Blue (68%)

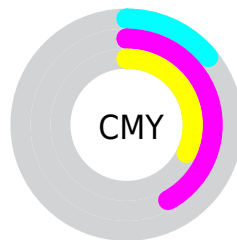


Cyan (0%)

Magenta (32%)

Yellow (21%)

Black (14%)



Cyan (14%)

Magenta (42%)

Yellow (32%)

Brightness & Saturation Gradients

These gradients show how the HunterLab color 62.6554, 25.2382, 1.6382 changes by changing the brightness by 10 percent. The first figure shows a shift by +10% for each color and the second figure -10%.

Similar to the brightness gradients but the following saturation gradients show a change of the HunterLab color 62.6554, 25.2382, 1.6382 by changing the saturation by 10% instead.

62.6554, 25.2382,
1.6382

62.6554, 25.2382,
1.6382

185.1998, 29.4547,
7.5578

51.9241, 24.3625,
1.1596

86.0428, 26.6899,
2.7203

41.8856, 23.3778,
0.7245

98.6303, 27.2884,
3.3161

32.5931, 22.2690,
0.3386

111.7781, 27.8107,
3.9462

24.1123, 21.0233,
0.0077

125.4631, 28.2624,
4.6088

16.5298, 19.6349,
-0.2596

139.6651, 28.6487,
5.3024

9.9681, 18.1366,
-0.4505

154.3659, 28.9737,

0.0000, INF, -NF

6.0259

0.0000, NaN, NaN

169.5491, 29.2413,
6.7780

0.0000, NaN, NaN

■ 62.6554, 25.2382,
1.6382

■ 62.6554, 25.2382,
1.6382

■ 57.0136, 34.6315,
1.7164

■ 68.8260, 15.8703,
2.0961

■ 51.9950, 43.8106,
2.4337

■ 75.4381, 6.6602,
2.9868

■ 47.7119, 52.3560,
3.8830

■ 82.4257, -2.3455,
4.2280

■ 44.2731, 59.6725,
6.0990

■ 89.7351, -11.1399,
5.7527

■ 41.7603, 65.0841,
9.0054

■ 96.4928, -18.4767,
6.5704

■ 40.1886, 68.0856,
12.3790

■ 96.8505, -16.4720,
1.4734

■ 39.4936, 68.9944,
14.9740

Harmonies

Analogous

The Analogous color harmony consists of three colors that are next to each other on the color wheel.



62.6569, 20.0900, -12.3202



62.6554, 25.2382, 1.6382



62.6569, 22.1973, 13.4593

Triad

The Triadic color harmony groups three colors that are evenly spaced from another and form a triangle on the color wheel.



62.6569, 25.2357, 1.6395



62.6569, -14.5144, 22.0478



62.6569, -17.4361, -21.2015

Complementary

The Complementary color scheme is a pair of colors which are on the opposite of each other on the color wheel.



62.6554, 25.2382, 1.6382



78.0096, -28.3235, 8.7797

Split Complementary

Split-complementary colors differ from the complementary color scheme. The scheme consists of three colors, the original color and two neighbors of the complement color.



62.6569, -25.3579, -8.6393



62.6554, 25.2382, 1.6382



62.6569, -23.7758, 15.8911

Square

The Square scheme is like the rectangle color scheme, but the four colors are evenly spaced on the color wheel.



62.6569, 25.2357, 1.6395



62.6569, -1.5007, 23.6529



62.6569, -27.5758, 5.1315



62.6569, -5.1713, -27.1839

Rectangle

The Rectangle color scheme consists of four colors that form a rectangle on the color wheel.



62.6554, 25.2382, 1.6382



62.6569, 16.0691, 18.9280



62.6569, -27.5758, 5.1315



62.6569, -20.6527, -17.4922

Sweetspot

The Sweet Spot groups the original color and five complimentary colors.



62.6569, 25.2357, 1.6395



91.5297, 5.3954, 3.8586



61.3428, 24.6462, -26.5448



41.8106, 3.2034, 1.6968

0.0000, NaN, NaN



46.2646, -2.4686, 2.5136

Same Dimension

The Same Dimension uses a secret algorithm to generate beautiful new colors.



62.6569, 25.2357, 1.6395



69.7342, 37.7150, 1.9359



64.3989, 16.7337, 14.1789



36.2310, 1.8472, 1.5541



30.4423, 53.2419, 11.0784



7.8512, 13.9280, 1.3322

Inverse Universe

The Inverse Universe completely reimagines the original color for something new.



62.6569, 25.2357, 1.6395



69.7342, 37.7150, 1.9359



75.6799, -19.3872, -6.2099



36.2310, 1.8472, 1.5541



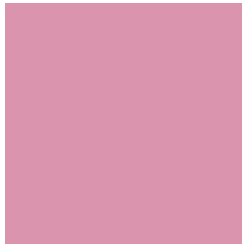
30.4423, 53.2419, 11.0784



7.8512, 13.9280, 1.3322

Previews

White Background



This preview shows how the HunterLab color 62.6554, 25.2382, 1.6382 looks on a white background.

Color Contrast Check

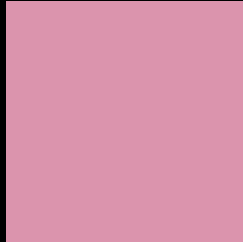
Large Text (above 18pt) WCAG AA × Fail

Any Text WCAG AA × Fail

Large Text (above 18pt) WCAG AAA × Fail

Any Text WCAG AAA × Fail

Black Background



This preview shows how the HunterLab color 62.6554, 25.2382, 1.6382 looks on a black background.

Color Contrast Check

Large Text (above 18pt) WCAG AA ✓ Pass

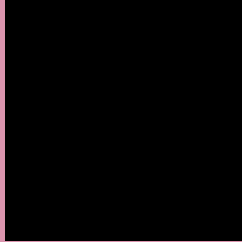
Any Text WCAG AA ✓ Pass

Large Text (above 18pt) WCAG AAA ✓ Pass

Any Text WCAG AAA ✓ Pass

If you want to check with other color combinations, try the [Color Contrast Checker](#).

HunterLab 62.6554, 25.2382, 1.6382 Background



This preview shows how black text looks on a background with the HunterLab color 62.6554, 25.2382, 1.6382.



This preview shows how white text looks on a background with the HunterLab color 62.6554, 25.2382,

1.6382.

Color Blindness Simulation

Color vision deficiency is a very complex topic, and I could not describe the different causes any better than Wikipedia does, so if you want to learn more, you should check out their [article about color blindness](#).

Dichromacy



Original Color

62.6554, 25.2382, 1.6382

Protanopia

62.7341, -0.2049, -4.7262

Deuteranopia

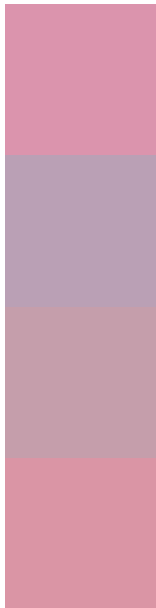
62.6794, 4.5661, 2.7289



Tritanopia

62.6828, 22.0179, 7.1171

Trichromacy



Original Color

62.6554, 25.2382, 1.6382

Protanomaly

62.3834, 8.6045, -2.9573

Deuteranomaly

62.6612, 11.7053, 2.3613

Tritanomaly

62.5435, 23.1246, 5.1983

Monochromacy



Original Color

62.6554, 25.2382, 1.6382

Achromatopsia

64.2295, -3.4271, 3.4897

Achromatomaly

63.2390, 6.5548, 2.4899

CSS Examples

Text

The CSS property to change the color of the text to HunterLab 62.6554, 25.2382, 1.6382 is called "color". The color property can be set on classes, ids or directly on the HTML element.

This example shows how text in the color `rgb(219, 148, 173)` looks like.

```
.text, #text, p{  
    color:rgb(219, 148, 173)  
}
```

If you want to add a text shadow in that color use the text-shadow property, you can generate a text shadow directly with our [CSS Text Shadow Generator](#).

Here you see how black text with a 4 pixel rgb(219, 148, 173) colored shadow looks like.

```
.shadow{ text-shadow: 4px 4px 2px rgb(219, 148, 173) }
```

Border

The CSS property to change the border of an element to HunterLab 62.6554, 25.2382, 1.6382 is called "border". The border property can be set on classes, ids or directly on the HTML element.

This example shows the color as border, it can be applied via the CSS property "border" or "border-color".

```
.border, #border, table{ border:4px solid rgb(219, 148, 173) }
```


If only the border color should be changed use the property `border-color`.

```
.border{ border-color:rgb(219, 148, 173) }
```

If you want to add a box shadow in that color use:

Here you see how a box with a 4 pixel `rgb(219, 148, 173)` colored shadow looks like.

```
.boxshadow{ -moz-box-shadow:4px 4px 4px  
4px rgb(219, 148, 173); -webkit-box-  
shadow:4px 4px 4px 4px rgb(219, 148, 173);  
box-shadow:4px 4px 4px 4px rgb(219, 148,  
173) }
```

Background

The CSS property to change the background color of an element to HunterLab 62.6554, 25.2382, 1.6382 is called "background". The background property can be set on classes, ids or directly on the HTML element.

```
.background, #background, body{  
background: rgb(219, 148, 173) }
```

If only the background color should be changed can be used:

```
.background{ background-color: rgb(219,  
148, 173) }
```

This example shows the color as background, it is applied via the CSS property "background".

To optimize and compress your CSS code, you can use our [online CSS compressor and optimizer](#) based on csstidy. If you want to create a linear or radial gradient as background or border, check our [CSS Gradient Generator](#).

Hey! You found this booklet interesting? Support Converting Colors with the new Membership Option!

The pro membership hides all ads, plus gives you double the colors in the color bucket, and more awesome pro features!

[Learn more, Memberships starting at \\$2.50/m!](#)

**Follow me
on Twitter!**

@ConvertingColor