

Converting Colors

HunterLab(62.8167, 9.4796,
12.8193)

Have a look what the booklet for
HunterLab(62.8167, 9.4796,
12.8193) contains.

HunterLab(62.8167, 9.4796, 12.8193)	3
<i>Conversions</i>	4
<i>Details</i>	6
<i>Harmonies</i>	12
<i>Previews</i>	24
<i>Color Blindness Simulation</i>	28
<i>CSS Examples</i>	31

Color

**HunterLab(62.8167, 9.4796,
12.8193)**

Conversions

Conversions Part 1

Format	Color
Hex	CA9F93
RGB	202, 159, 147
RGB Percent	79%, 62%, 58%
CMY	0.2078, 0.3765, 0.4235
CMYK	0.00, 0.21, 0.27, 0.21
HSL	13°, 34%, 68%
HSV	13°, 27%, 79%
XYZ	42.0217, 39.4594, 33.0054
YIQ	170.4890, 29.4800, 5.3840

Conversions

Conversions Part 2

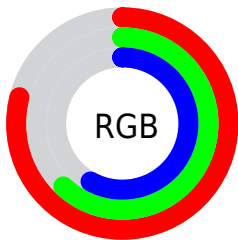
Format	Color
R _{YB}	202, 162, 147
Decimal	13279123
CIE Lab	69.08, 14.17, 12.35
CIE LCh	69, 18.790, 41.073
Yxy	39.4612, 0.3670, 0.3447
Android (android.graphics.Color)	4291469203 (0xFFCA9F93)
YUV	170.4890, -11.5801, 27.6351
Hunter-Lab	62.8167, 9.4796, 12.8193

Details

The HunterLab color **62.8167, 9.4796, 12.8193** is a light color, and the websafe version is hex **CC9999**. A complement of this color would be **68.7697, -13.6510, -6.0381**, and the grayscale version is **63.6429, -3.3958, 3.4578**.

A 20% lighter version of the original color is **85.7731, 7.7032, 14.7909**, and **41.9082, 9.2983, 10.3302** is the 20% darker color. If you saturate the color by 10%, you get **58.1316, 15.0439, 15.6742**, and if you desaturate by 10%, it is **67.7752, 4.2327, 9.7693**.

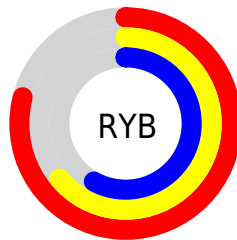
Distribution



Red (79%)

Green (62%)

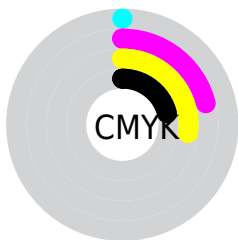
Blue (58%)



Red (79%)

Yellow (64%)

Blue (58%)

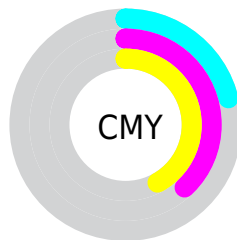


Cyan (0%)

Magenta (21%)

Yellow (27%)

Black (21%)



Cyan (21%)

Magenta (38%)

Yellow (42%)

Brightness & Saturation Gradients

These gradients show how the HunterLab color 62.8167, 9.4796, 12.8193 changes by changing the brightness by 10 percent. The first figure shows a shift by +10% for each color and the second figure -10%.

Similar to the brightness gradients but the following saturation gradients show a change of the HunterLab color 62.8167, 9.4796, 12.8193 by changing the saturation by 10% instead.

■ 62.8167, 9.4796,
12.8193

■ 62.8167, 9.4796,
12.8193

185.4312, 8.1456,
24.1880

■ 52.0756, 9.3347,
11.5645

■ 86.2220, 9.5527,
15.3138

■ 42.0267, 9.1107,
10.2932

■ 98.8179, 9.4985,
16.5608

■ 32.7229, 8.7933,
8.9947

111.9737, 9.3896,
17.8118

■ 24.2297, 8.3665,
7.6507

125.6664, 9.2301,
19.0692

■ 16.6333, 7.8076,
6.2294

139.8758, 9.0232,
20.3344

■ 10.0556, 7.0851,
5.6717

154.5837, 8.7719,

0.0000, INF, NaN

21.6086

0.0000, NaN, NaN

169.7738, 8.4786,
22.8929

0.0000, NaN, NaN

■ 62.8167, 9.4796,
12.8193

■ 62.8167, 9.4796,
12.8193

■ 58.1316, 15.0439,
15.6742

■ 67.7752, 4.2327,
9.7693

■ 53.7567, 20.9288,
18.2704

■ 72.9682, -0.7065,
6.5663

■ 49.7414, 27.0926,
20.5292

■ 78.3685, -5.3665,
3.2437

■ 46.1399, 33.4381,
22.3533

■ 83.9523, -9.7770,
-0.1748

■ 43.0097, 39.7881,
23.6356

■ 89.6998, -13.9675,
-3.6725

■ 40.4057, 45.8703,
24.2838

■ 95.1332, -20.5610,
-0.7018

■ 38.3681, 51.3220,
24.2922

■ 95.5492, -21.1835,
-0.1996

■ 37.9005, 52.6464,
24.2758

Harmonies

Analogous

The Analogous color harmony consists of three colors that are next to each other on the color wheel.



62.8182, 13.5429, 6.3392



62.8167, 9.4796, 12.8193



62.8182, 2.0470, 16.4460

Triad

The Triadic color harmony groups three colors that are evenly spaced from another and form a triangle on the color wheel.



62.8182, 9.4773, 12.8203



62.8182, -18.1119, 8.2668



62.8182, -0.1779, -13.8764

Complementary

The Complementary color scheme is a pair of colors which are on the opposite of each other on the color wheel.



62.8167, 9.4796, 12.8193



68.7697, -13.6510, -6.0381

Split Complementary

Split-complementary colors differ from the complementary color scheme. The scheme consists of three colors, the original color and two neighbors of the complement color.



62.8182, -8.5808, -13.1792



62.8167, 9.4796, 12.8193



62.8182, -18.6366, 0.3522

Square

The Square scheme is like the rectangle color scheme, but the four colors are evenly spaced on the color wheel.



62.8182, 9.4773, 12.8203



62.8182, -13.7598, 14.0691



62.8182, -15.2337, -7.7048



62.8182, 7.7740, -9.4991

Rectangle

The Rectangle color scheme consists of four colors that form a rectangle on the color wheel.



62.8167, 9.4796, 12.8193



62.8182, -3.6617, 17.0895



62.8182, -15.2337, -7.7048



62.8182, -3.0481, -14.2413

Sweetspot

The Sweet Spot groups the original color and five complimentary colors.



62.8182, 9.4773, 12.8203



94.3392, -0.3674, 8.9185



60.9473, 22.4843, -9.4881



43.1621, 0.2745, 4.4243

0.0000, NaN, NaN



46.2646, -2.4686, 2.5136

Same Dimension

The Same Dimension uses a secret algorithm to generate beautiful new colors.



62.8182, 9.4773, 12.8203



77.8992, 16.7905, 19.0279



70.6803, -4.3106, 20.3216



34.0647, 0.1626, 3.4500



30.5817, 41.6790, 19.5740



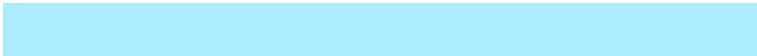
7.7335, 7.2212, 4.8917

Inverse Universe

The Inverse Universe completely reimagines the original color for something new.



68.7697, -13.6510, -6.0381



87.3027, -19.9001, -10.8039



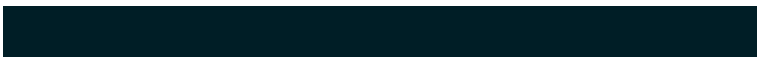
60.4272, -0.2405, -17.5949



35.0647, -3.6998, 0.2870



43.1233, -14.2618, -23.1133



10.3206, -3.9532, -4.3661

Previews

White Background



This preview shows how the HunterLab color 62.8167, 9.4796, 12.8193 looks on a white background.

Color Contrast Check

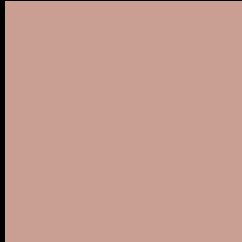
Large Text (above 18pt) WCAG AA × Fail

Any Text WCAG AA × Fail

Large Text (above 18pt) WCAG AAA × Fail

Any Text WCAG AAA × Fail

Black Background



This preview shows how the HunterLab color 62.8167, 9.4796, 12.8193 looks on a black background.

Color Contrast Check

Large Text (above 18pt) WCAG AA ✓ Pass

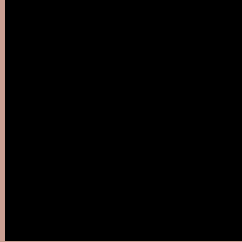
Any Text WCAG AA ✓ Pass

Large Text (above 18pt) WCAG AAA ✓ Pass

Any Text WCAG AAA ✓ Pass

If you want to check with other color combinations, try the [Color Contrast Checker](#).

HunterLab 62.8167, 9.4796, 12.8193 Background



This preview shows how black text looks on a background with the HunterLab color 62.8167, 9.4796, 12.8193.



This preview shows how white text looks on a background with the HunterLab color 62.8167, 9.4796,

Color Blindness Simulation

Color vision deficiency is a very complex topic, and I could not describe the different causes any better than Wikipedia does, so if you want to learn more, you should check out their [article about color blindness](#).

Dichromacy



Original Color

62.8167, 9.4796, 12.8193

Protanopia

62.8509, -3.2751, 10.6484

Deuteranopia

62.9342, 4.1049, 13.2322



Tritanopia

62.8024, 14.7515, 3.9829

Trichromacy



Original Color

62.8167, 9.4796, 12.8193

Protanomaly

62.7906, 0.8933, 11.4614

Deuteranomaly

62.9696, 5.6675, 13.2958

Tritanomaly

62.7284, 12.6736, 7.4401

Monochromacy



Original Color

62.8167, 9.4796, 12.8193

Achromatopsia

63.4017, -3.3830, 3.4447

Achromatomaly

63.1080, 1.1426, 6.7924

CSS Examples

Text

The CSS property to change the color of the text to HunterLab 62.8167, 9.4796, 12.8193 is called "color". The color property can be set on classes, ids or directly on the HTML element.

This example shows how text in the color `rgb(202, 159, 147)` looks like.

```
.text, #text, p{  
    color:rgb(202, 159, 147)  
}
```

If you want to add a text shadow in that color use the text-shadow property, you can generate a text shadow directly with our [CSS Text Shadow Generator](#).

Here you see how black text with a 4 pixel rgb(202, 159, 147) colored shadow looks like.

```
.shadow{ text-shadow: 4px 4px 2px rgb(202, 159, 147) }
```

Border

The CSS property to change the border of an element to HunterLab 62.8167, 9.4796, 12.8193 is called "border". The border property can be set on classes, ids or directly on the HTML element.

This example shows the color as border, it can be applied via the CSS property "border" or "border-color".

```
.border, #border, table{ border:4px solid rgb(202, 159, 147) }
```


If only the border color should be changed use the property `border-color`.

```
.border{ border-color:rgb(202, 159, 147) }
```

If you want to add a box shadow in that color use:

Here you see how a box with a 4 pixel `rgb(202, 159, 147)` colored shadow looks like.

```
.boxshadow{ -moz-box-shadow:4px 4px 4px  
4px rgb(202, 159, 147); -webkit-box-  
shadow:4px 4px 4px 4px rgb(202, 159, 147);  
box-shadow:4px 4px 4px 4px rgb(202, 159,  
147) }
```

Background

The CSS property to change the background color of an element to HunterLab 62.8167, 9.4796, 12.8193 is called "background". The background property can be set on classes, ids or directly on the HTML element.

```
.background, #background, body{  
background: rgb(202, 159, 147) }
```

If only the background color should be changed can be used:

```
.background{ background-color: rgb(202,  
159, 147) }
```

This example shows the color as background, it is applied via the CSS property "background".

To optimize and compress your CSS code, you can use our [online CSS compressor and optimizer](#) based on csstidy. If you want to create a linear or radial gradient as background or border, check our [CSS Gradient Generator](#).

Hey! You found this booklet interesting? Support Converting Colors with the new Membership Option!

The pro membership hides all ads, plus gives you double the colors in the color bucket, and more awesome pro features!

[Learn more, Memberships starting at \\$2.50/m!](#)

**Follow me
on Twitter!**

@ConvertingColor