

Converting Colors

HunterLab(62.8299, 9.9901,
9.2099)

Have a look what the booklet for
HunterLab(62.8299, 9.9901, 9.2099)
contains.

HunterLab(62.8299, 9.9901, 9.2099)	3
<i>Conversions</i>	4
<i>Details</i>	6
<i>Harmonies</i>	12
<i>Previews</i>	24
<i>Color Blindness Simulation</i>	28
<i>CSS Examples</i>	31

Color

**HunterLab(62.8299, 9.9901,
9.2099)**

Conversions

Conversions Part 1

Format	Color
Hex	C89F9C
RGB	200, 159, 156
RGB Percent	78%, 62%, 61%
CMY	0.2157, 0.3765, 0.3882
CMYK	0.00, 0.20, 0.22, 0.22
HSL	4°, 29%, 70%
HSV	4°, 22%, 78%
XYZ	42.2183, 39.4760, 36.8470
YIQ	170.9170, 25.3990, 7.7590

Conversions

Conversions Part 2

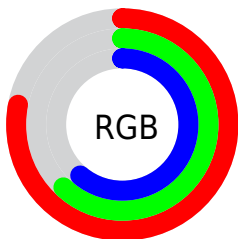
Format	Color
R _Y B	200, 159, 156
Decimal	13148060
CIE Lab	69.10, 14.71, 7.34
CIE LCh	69, 16.439, 26.534
Yxy	39.4778, 0.3561, 0.3330
Android (android.graphics.Color)	4291338140 (0xFFC89F9C)
YUV	170.9170, -7.3541, 25.5058
Hunter-Lab	62.8299, 9.9901, 9.2099

Details

The HunterLab color $62.8299, 9.9901, 9.2099$ is a light color, and the websafe version is hex $CC9999$. A complement of this color would be $71.5327, -15.1330, -1.4785$, and the grayscale version is $63.8043, -3.4044, 3.4666$.

A 20% lighter version of the original color is $86.0269, 9.0555, 11.1453$, and $41.8988, 9.6866, 7.0754$ is the 20% darker color. If you saturate the color by 10%, you get $57.3774, 16.8608, 11.5814$, and if you desaturate by 10%, it is $68.6379, 3.4251, 6.8734$.

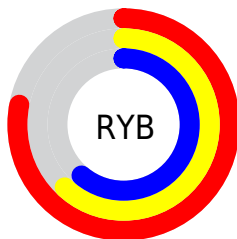
Distribution



Red (78%)

Green (62%)

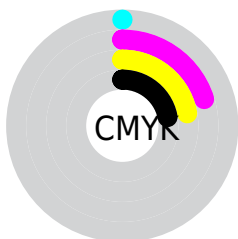
Blue (61%)



Red (78%)

Yellow (62%)

Blue (61%)

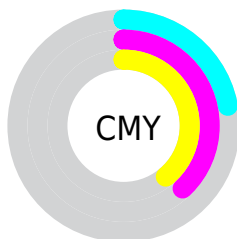


Cyan (0%)

Magenta (20%)

Yellow (22%)

Black (22%)



Cyan (22%)

Magenta (38%)

Yellow (39%)

Brightness & Saturation Gradients

These gradients show how the HunterLab color 62.8299, 9.9901, 9.2099 changes by changing the brightness by 10 percent. The first figure shows a shift by +10% for each color and the second figure -10%.

Similar to the brightness gradients but the following saturation gradients show a change of the HunterLab color 62.8299, 9.9901, 9.2099 by changing the saturation by 10% instead.

■ 62.8299, 9.9901,
9.2099

■ 62.8299, 9.9901,
9.2099

185.4501, 8.8492,
18.6204

■ 52.0880, 9.8193,
8.2385

■ 86.2367, 10.1118,
11.1921

■ 42.0382, 9.5679,
7.2743

■ 98.8332, 10.0804,
12.2042

■ 32.7335, 9.2216,
6.3135

111.9896, 9.9935,
13.2319

■ 24.2393, 8.7640,
5.3476

125.6830, 9.8552,
14.2760

■ 16.6417, 8.1725,
4.3618

139.8930, 9.6688,
15.3366

■ 10.0628, 7.4157,
3.6088

154.6015, 9.4374,

0.0000, INF, NaN

16.4142

0.0000, NaN, NaN

169.7922, 9.1634,
17.5088

0.0000, NaN, NaN

■ 62.8299, 9.9901,
9.2099

■ 62.8299, 9.9901,
9.2099

■ 57.3774, 16.8608,
11.5814

■ 68.6379, 3.4251,
6.8734

■ 52.3399, 24.0147,
13.9545

■ 74.7454, -2.8369,
4.5816

■ 47.7960, 31.3506,
16.2726

■ 81.1122, -8.8251,
2.3382

■ 43.8344, 38.6567,
18.4387

■ 87.7051, -14.5730,
0.1411

■ 40.5484, 45.5728,
20.3127

■ 94.4629, -20.3073,
-1.5288

■ 38.0205, 51.5972,
21.7285

■ 95.4041, -21.7132,
-0.3877

■ 36.2964, 56.1905,
22.5485

■ 35.4743, 58.5423,
22.8840

Harmonies

Analogous

The Analogous color harmony consists of three colors that are next to each other on the color wheel.



62.8313, 11.5998, 2.5901



62.8299, 9.9901, 9.2099



62.8313, 4.7446, 13.7637

Triad

The Triadic color harmony groups three colors that are evenly spaced from another and form a triangle on the color wheel.



62.8313, 9.9879, 9.2109



62.8313, -14.8706, 10.4835



62.8313, -4.2201, -11.7677

Complementary

The Complementary color scheme is a pair of colors which are on the opposite of each other on the color wheel.



62.8299, 9.9901, 9.2099



71.5327, -15.1330, -1.4785

Split Complementary

Split-complementary colors differ from the complementary color scheme. The scheme consists of three colors, the original color and two neighbors of the complement color.



62.8313, -11.0657, -9.0497



62.8299, 9.9901, 9.2099



62.8313, -17.0316, 4.2388

Square

The Square scheme is like the rectangle color scheme, but the four colors are evenly spaced on the color wheel.



62.8313, 9.9879, 9.2109



62.8313, -9.6312, 14.4361



62.8313, -15.6714, -2.9805



62.8313, 3.1758, -10.0414

Rectangle

The Rectangle color scheme consists of four colors that form a rectangle on the color wheel.



62.8299, 9.9901, 9.2099



62.8313, 0.0167, 15.2869



62.8313, -15.6714, -2.9805



62.8313, -6.6588, -11.3363

Sweetspot

The Sweet Spot groups the original color and five complimentary colors.



62.8313, 9.9879, 9.2109



94.2057, 0.4225, 7.5587



63.3175, 18.2932, -10.1649



43.3566, 0.4293, 3.5825

0.0000, NaN, NaN



46.2646, -2.4686, 2.5136

Same Dimension

The Same Dimension uses a secret algorithm to generate beautiful new colors.



62.8313, 9.9879, 9.2109



79.4740, 17.0475, 13.4802



69.0657, -1.1231, 15.5372



32.7891, 0.8199, 2.9272



28.3730, 46.3921, 18.2955



6.5008, 9.0411, 4.1640

Inverse Universe

The Inverse Universe completely reimagines the original color for something new.



71.5327, -15.1330, -1.4785



93.0949, -22.3804, -3.2807



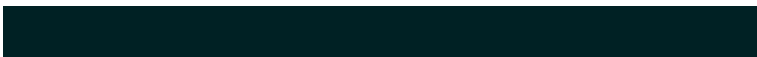
64.7491, -4.4753, -10.2170



34.5525, -4.2482, 0.7670



50.1269, -24.0999, -10.6295



11.0811, -5.4572, -2.0698

Previews

White Background



This preview shows how the HunterLab color 62.8299, 9.9901, 9.2099 looks on a white background.

Color Contrast Check

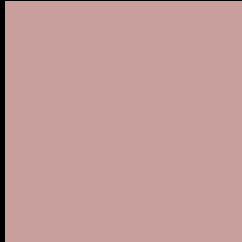
Large Text (above 18pt) WCAG AA × Fail

Any Text WCAG AA × Fail

Large Text (above 18pt) WCAG AAA × Fail

Any Text WCAG AAA × Fail

Black Background



This preview shows how the HunterLab color 62.8299, 9.9901, 9.2099 looks on a black background.

Color Contrast Check

Large Text (above 18pt) WCAG AA ✓ Pass

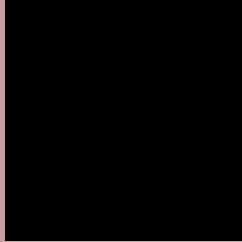
Any Text WCAG AA ✓ Pass

Large Text (above 18pt) WCAG AAA ✓ Pass

Any Text WCAG AAA ✓ Pass

If you want to check with other color combinations, try the [Color Contrast Checker](#).

HunterLab 62.8299, 9.9901, 9.2099 Background



This preview shows how black text looks on a background with the HunterLab color 62.8299, 9.9901, 9.2099.



This preview shows how white text looks on a background with the HunterLab color 62.8299, 9.9901,

Color Blindness Simulation

Color vision deficiency is a very complex topic, and I could not describe the different causes any better than Wikipedia does, so if you want to learn more, you should check out their [article about color blindness](#).

Dichromacy



Original Color

62.8299, 9.9901, 9.2099

Protanopia

62.9104, -2.5817, 6.9421

Deuteranopia

62.8555, 4.3034, 9.5553



Tritanopia

62.8769, 13.6711, 3.5890

Trichromacy



Original Color

62.8299, 9.9901, 9.2099

Protanomaly

62.8337, 1.5197, 7.7935

Deuteranomaly

62.9893, 6.1955, 9.7331

Tritanomaly

62.8900, 12.0316, 5.8517

Monochromacy



Original Color

62.8299, 9.9901, 9.2099

Achromatopsia

63.8154, -3.4050, 3.4672

Achromatomaly

63.5104, 1.2599, 5.4778

CSS Examples

Text

The CSS property to change the color of the text to HunterLab 62.8299, 9.9901, 9.2099 is called "color". The color property can be set on classes, ids or directly on the HTML element.

This example shows how text in the color `rgb(200, 159, 156)` looks like.

```
.text, #text, p{  
    color:rgb(200, 159, 156)  
}
```

If you want to add a text shadow in that color use the text-shadow property, you can generate a text shadow directly with our [CSS Text Shadow Generator](#).

Here you see how black text with a 4 pixel rgb(200, 159, 156) colored shadow looks like.

```
.shadow{ text-shadow: 4px 4px 2px rgb(200, 159, 156) }
```

Border

The CSS property to change the border of an element to HunterLab 62.8299, 9.9901, 9.2099 is called "border".

The border property can be set on classes, ids or directly on the HTML element.

This example shows the color as border, it can be applied via the CSS property "border" or "border-color".

```
.border, #border, table{ border:4px solid rgb(200, 159, 156) }
```


If only the border color should be changed use the property `border-color`.

```
.border{ border-color:rgb(200, 159, 156) }
```

If you want to add a box shadow in that color use:

Here you see how a box with a 4 pixel `rgb(200, 159, 156)` colored shadow looks like.

```
.boxshadow{ -moz-box-shadow:4px 4px 4px  
4px rgb(200, 159, 156); -webkit-box-  
shadow:4px 4px 4px 4px rgb(200, 159, 156);  
box-shadow:4px 4px 4px 4px rgb(200, 159,  
156) }
```

Background

The CSS property to change the background color of an element to HunterLab 62.8299, 9.9901, 9.2099 is called "background". The background property can be set on classes, ids or directly on the HTML element.

```
.background, #background, body{  
background: rgb(200, 159, 156) }
```

If only the background color should be changed can be used:

```
.background{ background-color: rgb(200,  
159, 156) }
```

This example shows the color as background, it is applied via the CSS property "background".

To optimize and compress your CSS code, you can use our [online CSS compressor and optimizer](#) based on csstidy. If you want to create a linear or radial gradient as background or border, check our [CSS Gradient Generator](#).

Hey! You found this booklet interesting? Support Converting Colors with the new Membership Option!

The pro membership hides all ads, plus gives you double the colors in the color bucket, and more awesome pro features!

[Learn more, Memberships starting at \\$2.50/m!](#)

**Follow me
on Twitter!**

@ConvertingColor