

Converting Colors

HunterLab(62.8798, 23.3507,
-2.1966)

Have a look what the booklet for
HunterLab(62.8798, 23.3507,
-2.1966) contains.

HunterLab(62.8053, 23.6089, -2.1556)	3
<i>Conversions</i>	4
<i>Details</i>	6
<i>Harmonies</i>	12
<i>Previews</i>	24
<i>Color Blindness Simulation</i>	28
<i>CSS Examples</i>	31

Color

**HunterLab(62.8053, 23.6089,
-2.1556)**

Conversions

Conversions Part 1

Format	Color
Hex	D696B5
RGB	214, 150, 181
RGB Percent	84%, 59%, 71%
CMY	0.1608, 0.4117, 0.2902
CMYK	0.00, 0.30, 0.15, 0.16
HSL	331°, 44%, 71%
HSV	331°, 30%, 84%
XYZ	46.9784, 39.4451, 48.8537
YIQ	172.6700, 28.1930, 23.2090

Conversions

Conversions Part 2

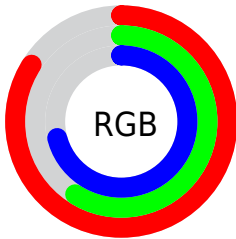
Format	Color
R_{YB}	214, 150, 181
Decimal	14063285
CIE Lab	69.07, 28.63, -6.43
CIE LCh	69, 29.347, 347.336
Yxy	39.4469, 0.3473, 0.2916
Android (android.graphics.Color)	4292253365 (0xFFD696B5)
YUV	172.6700, 4.1067, 36.2464
Hunter-Lab	62.8053, 23.6089, -2.1556

Details

The HunterLab color $62.8053, 23.6089, -2.1556$ is a light color, and the websafe version is hex `CC99CC`. A complement of this color would be $76.1559, -27.3924, 11.5671$, and the grayscale version is $64.4837, -3.4407, 3.5035$.

A 20% lighter version of the original color is $84.2835, 18.4533, -4.1035$, and $41.9082, 21.9180, -2.6850$ is the 20% darker color. If you saturate the color by 10%, you get $57.2660, 33.1393, -3.4897$, and if you desaturate by 10%, it is $68.8352, 14.0965, -0.3093$.

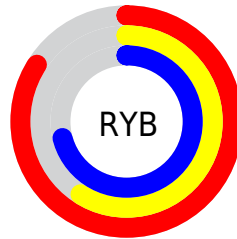
Distribution



Red (84%)

Green (59%)

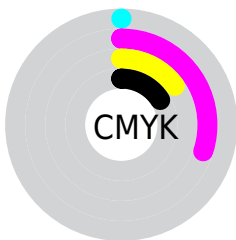
Blue (71%)



Red (84%)

Yellow (59%)

Blue (71%)

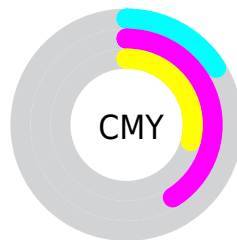


Cyan (0%)

Magenta (30%)

Yellow (15%)

Black (16%)



Cyan (16%)

Magenta (41%)

Yellow (29%)

Brightness & Saturation Gradients

These gradients show how the HunterLab color 62.8053, 23.6089, -2.1556 changes by changing the brightness by 10 percent. The first figure shows a shift by +10% for each color and the second figure -10%.

Similar to the brightness gradients but the following saturation gradients show a change of the HunterLab color 62.8053, 23.6089, -2.1556 by changing the saturation by 10% instead.

62.8053, 23.6089,
-2.1556

62.8053, 23.6089,
-2.1556

185.4148, 27.2807,
2.2742

52.0649, 22.8036,
-2.4314

86.2093, 24.9269,
-1.4502

42.0167, 21.8912,
-2.6521

98.8046, 25.4616,
-1.0306

32.7137, 20.8562,
-2.8097

111.9598, 25.9219,
-0.5701

24.2213, 19.6846,
-2.8957

125.6520, 26.3135,
-0.0710

16.6259, 18.3665,
-2.8983

139.8609, 26.6412,
0.4647

10.0494, 16.9218,
-2.8021

154.5683, 26.9093,

0.0000, INF, -NF

1.0352

0.0000, NaN, NaN

169.7579, 27.1214,
1.6388

0.0000, NaN, NaN

■ 62.8053, 23.6089,
-2.1556

■ 62.8053, 23.6089,
-2.1556

■ 57.2660, 33.1393,
-3.4897

■ 68.8352, 14.0965,
-0.3093

■ 52.3023, 42.4696,
-4.1756

■ 75.2764, 4.7246,
1.9316

■ 48.0162, 51.2181,
-4.0577

■ 82.0695, -4.4624,
4.4810

■ 44.5096, 58.8357,
-2.9996

■ 89.1652, -13.4560,
7.2734

■ 41.8643, 64.6725,
-0.9424

■ 95.8554, -21.2721,
9.5250

■ 40.1099, 68.1828,
2.0269

■ 96.2002, -19.3291,
4.6007

■ 39.1091, 69.4892,
5.5592

■ 96.4553, -17.8957,
0.9677

■ 39.1007, 69.4990,
5.5924

Harmonies

Analogous

The Analogous color harmony consists of three colors that are next to each other on the color wheel.



62.8067, 16.5870, -15.4120



62.8053, 23.6089, -2.1556



62.8067, 22.9802, 10.2468

Triad

The Triadic color harmony groups three colors that are evenly spaced from another and form a triangle on the color wheel.



62.8067, 23.6066, -2.1543



62.8067, -10.7975, 22.4958



62.8067, -19.7693, -17.2393

Complementary

The Complementary color scheme is a pair of colors which are on the opposite of each other on the color wheel.



62.8053, 23.6089, -2.1556



76.1559, -27.3924, 11.5671

Split Complementary

Split-complementary colors differ from the complementary color scheme. The scheme consists of three colors, the original color and two neighbors of the complement color.



62.8067, -25.9580, -4.2739



62.8053, 23.6089, -2.1556



62.8067, -21.0819, 17.7767

Square

The Square scheme is like the rectangle color scheme, but the four colors are evenly spaced on the color wheel.



62.8067, 23.6066, -2.1543



62.8067, 2.3533, 22.8301



62.8067, -26.4175, 8.5237



62.8067, -8.8656, -25.2632

Rectangle

The Rectangle color scheme consists of four colors that form a rectangle on the color wheel.



62.8053, 23.6089, -2.1556



62.8067, 18.3087, 16.4602



62.8067, -26.4175, 8.5237



62.8067, -22.4291, -13.2049

Sweetspot

The Sweet Spot groups the original color and five complimentary colors.



62.8067, 23.6066, -2.1543



92.4567, 4.8402, 2.5959



60.5102, 18.9976, -24.7172



42.2251, 3.0088, 1.0012

0.0000, NaN, NaN



46.2646, -2.4686, 2.5136

Same Dimension

The Same Dimension uses a secret algorithm to generate beautiful new colors.



62.8067, 23.6066, -2.1543



72.1547, 36.3021, -3.7595



61.8973, 18.9836, 10.8324



35.3837, 2.0017, 0.9587



30.4332, 54.1571, 3.8559



7.5850, 13.7031, -0.6306

Inverse Universe

The Inverse Universe completely reimagines the original color for something new.



62.8067, 23.6066, -2.1543



72.1547, 36.3021, -3.7595



77.0929, -22.0070, -1.8085



35.3837, 2.0017, 0.9587



30.4332, 54.1571, 3.8559



7.5850, 13.7031, -0.6306

Previews

White Background



This preview shows how the HunterLab color 62.8053, 23.6089, -2.1556 looks on a white background.

Color Contrast Check

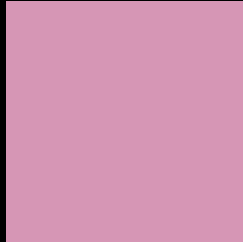
Large Text (above 18pt) WCAG AA × Fail

Any Text WCAG AA × Fail

Large Text (above 18pt) WCAG AAA × Fail

Any Text WCAG AAA × Fail

Black Background



This preview shows how the HunterLab color 62.8053, 23.6089, -2.1556 looks on a black background.

Color Contrast Check

Large Text (above 18pt) WCAG AA ✓ Pass

Any Text WCAG AA ✓ Pass

Large Text (above 18pt) WCAG AAA ✓ Pass

Any Text WCAG AAA ✓ Pass

If you want to check with other color combinations, try the [Color Contrast Checker](#).

HunterLab 62.8053, 23.6089, -2.1556 Background



This preview shows how black text looks on a background with the HunterLab color 62.8053, 23.6089, -2.1556.



This preview shows how white text looks on a background with the HunterLab color 62.8053, 23.6089, -2.1556.

-2.1556.

Color Blindness Simulation

Color vision deficiency is a very complex topic, and I could not describe the different causes any better than Wikipedia does, so if you want to learn more, you should check out their [article about color blindness](#).

Dichromacy



Original Color

62.8053, 23.6089, -2.1556

Protanopia

63.0955, 0.0123, -7.9821

Deuteranopia

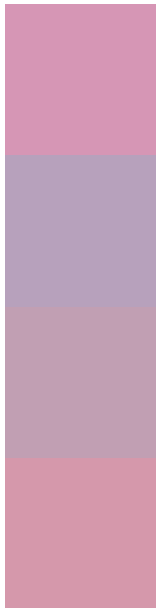
62.9198, 4.4104, -0.8415



Tritanopia

62.8459, 18.7812, 5.4710

Trichromacy



Original Color

62.8053, 23.6089, -2.1556

Protanomaly

62.6002, 8.3574, -6.3409

Deuteranomaly

62.7602, 11.1237, -1.4224

Tritanomaly

62.8831, 20.5854, 2.7821

Monochromacy



Original Color

62.8053, 23.6089, -2.1556

Achromatopsia

64.6440, -3.4492, 3.5122

Achromatomaly

63.8249, 5.8540, 1.2753

CSS Examples

Text

The CSS property to change the color of the text to HunterLab 62.8053, 23.6089, -2.1556 is called "color". The color property can be set on classes, ids or directly on the HTML element.

This example shows how text in the color `rgb(214, 150, 181)` looks like.

```
.text, #text, p{  
    color:rgb(214, 150, 181)  
}
```

If you want to add a text shadow in that color use the text-shadow property, you can generate a text shadow directly with our [CSS Text Shadow Generator](#).

Here you see how black text with a 4 pixel rgb(214, 150, 181) colored shadow looks like.

```
.shadow{ text-shadow: 4px 4px 2px rgb(214, 150, 181) }
```

Border

The CSS property to change the border of an element to HunterLab 62.8053, 23.6089, -2.1556 is called "border". The border property can be set on classes, ids or directly on the HTML element.

This example shows the color as border, it can be applied via the CSS property "border" or "border-color".

```
.border, #border, table{ border:4px solid rgb(214, 150, 181) }
```


If only the border color should be changed use the property `border-color`.

```
.border{ border-color:rgb(214, 150, 181) }
```

If you want to add a box shadow in that color use:

Here you see how a box with a 4 pixel `rgb(214, 150, 181)` colored shadow looks like.

```
.boxshadow{ -moz-box-shadow:4px 4px 4px  
4px rgb(214, 150, 181); -webkit-box-  
shadow:4px 4px 4px 4px rgb(214, 150, 181);  
box-shadow:4px 4px 4px 4px rgb(214, 150,  
181) }
```

Background

The CSS property to change the background color of an element to HunterLab 62.8053, 23.6089, -2.1556 is called "background". The background property can be set on classes, ids or directly on the HTML element.

```
.background, #background, body{  
background: rgb(214, 150, 181) }
```

If only the background color should be changed can be used:

```
.background{ background-color: rgb(214,  
150, 181) }
```

This example shows the color as background, it is applied via the CSS property "background".

To optimize and compress your CSS code, you can use our [online CSS compressor and optimizer](#) based on csstidy. If you want to create a linear or radial gradient as background or border, check our [CSS Gradient Generator](#).

Hey! You found this booklet interesting? Support Converting Colors with the new Membership Option!

The pro membership hides all ads, plus gives you double the colors in the color bucket, and more awesome pro features!

[Learn more, Memberships starting at \\$2.50/m!](#)

**Follow me
on Twitter!**

@ConvertingColor