

Converting Colors

HunterLab(62.8915, 6.9271,
14.2973)

Have a look what the booklet for
HunterLab(62.8915, 6.9271,
14.2973) contains.

HunterLab(62.9405, 6.8567, 14.4242)	3
<i>Conversions</i>	4
<i>Details</i>	6
<i>Harmonies</i>	12
<i>Previews</i>	24
<i>Color Blindness Simulation</i>	28
<i>CSS Examples</i>	31

Color

**HunterLab(62.9405, 6.8567,
14.4242)**

Conversions

Conversions Part 1

Format	Color
Hex	C7A18F
RGB	199, 161, 143
RGB Percent	78%, 63%, 56%
CMY	0.2196, 0.3686, 0.4392
CMYK	0.00, 0.19, 0.28, 0.22
HSL	19°, 33%, 67%
HSV	19°, 28%, 78%
XYZ	41.2560, 39.6151, 31.4587
YIQ	170.3100, 28.4260, 2.4580

Conversions

Conversions Part 2

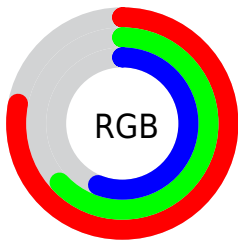
Format	Color
R _Y B	199, 170, 143
Decimal	13083023
CIE Lab	69.20, 11.36, 14.67
CIE LCh	69, 18.552, 52.257
Yxy	39.6169, 0.3673, 0.3527
Android (android.graphics.Color)	4291273103 (0xFFC7A18F)
YUV	170.3100, -13.4638, 25.1611
Hunter-Lab	62.9405, 6.8567, 14.4242

Details

The HunterLab color $62.9405, 6.8567, 14.4242$ is a light color, and the websafe version is hex $CC9999$. A complement of this color would be $65.5818, -10.9046, -8.6289$, and the grayscale version is $63.5768, -3.3923, 3.4542$.

A 20% lighter version of the original color is $86.2571, 6.0630, 16.9486$, and $42.0201, 6.9469, 11.4021$ is the 20% darker color. If you saturate the color by 10%, you get $58.8209, 11.3080, 17.5212$, and if you desaturate by 10%, it is $67.2692, 2.7208, 10.9991$.

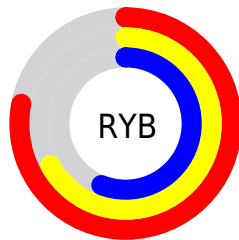
Distribution



Red (78%)

Green (63%)

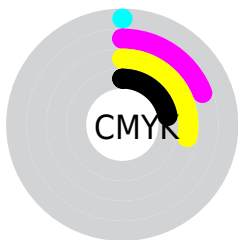
Blue (56%)



Red (78%)

Yellow (67%)

Blue (56%)

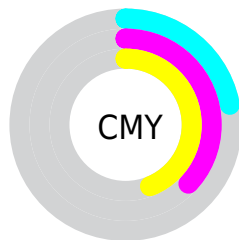


Cyan (0%)

Magenta (19%)

Yellow (28%)

Black (22%)



Cyan (22%)

Magenta (37%)

Yellow (44%)

Brightness & Saturation Gradients

These gradients show how the HunterLab color 62.9405, 6.8567, 14.4242 changes by changing the brightness by 10 percent. The first figure shows a shift by +10% for each color and the second figure -10%.

Similar to the brightness gradients but the following saturation gradients show a change of the HunterLab color 62.9405, 6.8567, 14.4242 by changing the saturation by 10% instead.

■ 62.9405, 6.8567,
14.4242

■ 62.9405, 6.8567,
14.4242

185.6088, 4.5075,
26.7273

■ 52.1919, 6.8494,
13.0332

■ 86.3596, 6.6737,
17.1643

■ 42.1349, 6.7707,
11.6141

■ 98.9619, 6.4994,
18.5234

■ 32.8225, 6.6075,
10.1529

112.1237, 6.2751,
19.8812

■ 24.3198, 6.3454,
8.6264

125.8223, 6.0041,
21.2402

■ 16.7128, 5.9633,
6.9955

140.0374, 5.6895,
22.6028

■ 10.1229, 5.4298,
6.6010

154.7508, 5.3337,

0.0000, INF, NaN

23.9707

0.0000, NaN, NaN

169.9462, 4.9391,
25.3452

0.0000, NaN, NaN

■ 62.9405, 6.8567,
14.4242

■ 62.9405, 6.8567,
14.4242

■ 58.8209, 11.3080,
17.5212

■ 67.2692, 2.7208,
10.9991

■ 54.9326, 16.0931,
20.2238

■ 71.7797, -1.1138,
7.2956

■ 51.3074, 21.2029,
22.4591

■ 76.4539, -4.6754,
3.3574

■ 47.9794, 26.6014,
24.1462

■ 81.2750, -7.9905,
-0.7812

■ 44.9845, 32.2094,
25.2068

■ 86.2289, -11.0853,
-5.0926

■ 42.3587, 37.8894,
25.5852

■ 91.0369, -15.4730,
-5.7899

■ 40.1300, 43.4222,
25.3311

■ 95.3321, -21.9762,
-0.4810

■ 39.7574, 44.3983,
25.2756

Harmonies

Analogous

The Analogous color harmony consists of three colors that are next to each other on the color wheel.



62.9420, 12.3279, 8.9830



62.9405, 6.8567, 14.4242



62.9420, -1.1665, 16.8520

Triad

The Triadic color harmony groups three colors that are evenly spaced from another and form a triangle on the color wheel.



62.9420, 6.8544, 14.4251



62.9420, -18.6092, 5.4652



62.9420, 2.8864, -12.5529

Complementary

The Complementary color scheme is a pair of colors which are on the opposite of each other on the color wheel.



62.9405, 6.8567, 14.4242



65.5818, -10.9046, -8.6289

Split Complementary

Split-complementary colors differ from the complementary color scheme. The scheme consists of three colors, the original color and two neighbors of the complement color.



62.9420, -5.5274, -13.8181



62.9405, 6.8567, 14.4242



62.9420, -17.6509, -2.6887

Square

The Square scheme is like the rectangle color scheme, but the four colors are evenly spaced on the color wheel.



62.9420, 6.8544, 14.4251



62.9420, -15.6554, 12.1403



62.9420, -12.9653, -10.0047



62.9420, 9.9544, -6.7452

Rectangle

The Rectangle color scheme consists of four colors that form a rectangle on the color wheel.



62.9405, 6.8567, 14.4242



62.9420, -6.7611, 16.6904



62.9420, -12.9653, -10.0047



62.9420, 0.1112, -13.5519

Sweetspot

The Sweet Spot groups the original color and five complimentary colors.



62.9420, 6.8544, 14.4251



94.9945, -1.4850, 9.6423



59.2745, 21.9776, -6.9620



43.5205, -0.3399, 4.8170

0.0000, NaN, NaN



46.2646, -2.4686, 2.5136

Same Dimension

The Same Dimension uses a secret algorithm to generate beautiful new colors.



62.9420, 6.8544, 14.4251



79.7852, 12.7669, 21.7483



70.9973, -6.9545, 21.9245



33.4431, -0.3067, 3.6486



32.1025, 34.9779, 20.3938



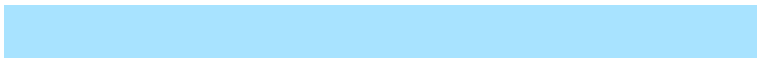
7.8749, 5.3124, 4.9455

Inverse Universe

The Inverse Universe completely reimagines the original color for something new.



65.5818, -10.9046, -8.6289



84.0148, -15.7964, -15.2725



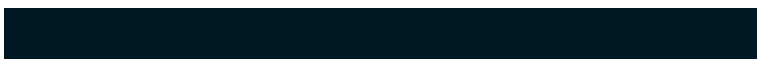
57.3006, 2.7480, -20.5525



33.8679, -3.1480, -0.0490



37.3655, -6.7076, -32.2238



8.8771, -2.5630, -5.5628

Previews

White Background



This preview shows how the HunterLab color 62.9405, 6.8567, 14.4242 looks on a white background.

Color Contrast Check

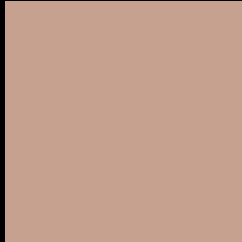
Large Text (above 18pt) WCAG AA × Fail

Any Text WCAG AA × Fail

Large Text (above 18pt) WCAG AAA × Fail

Any Text WCAG AAA × Fail

Black Background



This preview shows how the HunterLab color 62.9405, 6.8567, 14.4242 looks on a black background.

Color Contrast Check

Large Text (above 18pt) WCAG AA ✓ Pass

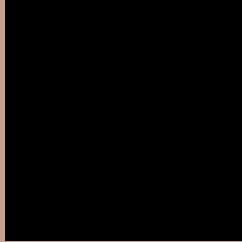
Any Text WCAG AA ✓ Pass

Large Text (above 18pt) WCAG AAA ✓ Pass

Any Text WCAG AAA ✓ Pass

If you want to check with other color combinations, try the [Color Contrast Checker](#).

HunterLab 62.9405, 6.8567, 14.4242 Background



This preview shows how black text looks on a background with the HunterLab color 62.9405, 6.8567, 14.4242.



This preview shows how white text looks on a background with the HunterLab color 62.9405, 6.8567,

Color Blindness Simulation

Color vision deficiency is a very complex topic, and I could not describe the different causes any better than Wikipedia does, so if you want to learn more, you should check out their [article about color blindness](#).

Dichromacy



Original Color

62.9405, 6.8567, 14.4242

Protanopia

63.1107, -4.1372, 12.8835

Deuteranopia

63.0711, 4.4182, 14.5128



Tritanopia

62.8769, 13.6711, 3.5890

Trichromacy



Original Color

62.9405, 6.8567, 14.4242

Protanomaly

62.9778, -0.1481, 13.2023

Deuteranomaly

62.8964, 5.2767, 14.3523

Tritanomaly

62.7768, 11.4386, 7.4726

Monochromacy



Original Color

62.9405, 6.8567, 14.4242

Achromatopsia

63.4017, -3.3830, 3.4447

Achromatomaly

63.2450, 0.0141, 7.7935

CSS Examples

Text

The CSS property to change the color of the text to HunterLab 62.9405, 6.8567, 14.4242 is called "color". The color property can be set on classes, ids or directly on the HTML element.

This example shows how text in the color `rgb(199, 161, 143)` looks like.

```
.text, #text, p{  
    color:rgb(199, 161, 143)  
}
```

If you want to add a text shadow in that color use the text-shadow property, you can generate a text shadow directly with our [CSS Text Shadow Generator](#).

Here you see how black text with a 4 pixel rgb(199, 161, 143) colored shadow looks like.

```
.shadow{ text-shadow: 4px 4px 2px rgb(199, 161, 143) }
```

Border

The CSS property to change the border of an element to HunterLab 62.9405, 6.8567, 14.4242 is called "border". The border property can be set on classes, ids or directly on the HTML element.

This example shows the color as border, it can be applied via the CSS property "border" or "border-color".

```
.border, #border, table{ border:4px solid rgb(199, 161, 143) }
```


If only the border color should be changed use the property `border-color`.

```
.border{ border-color:rgb(199, 161, 143) }
```

If you want to add a box shadow in that color use:

Here you see how a box with a 4 pixel `rgb(199, 161, 143)` colored shadow looks like.

```
.boxshadow{ -moz-box-shadow:4px 4px 4px  
4px rgb(199, 161, 143); -webkit-box-  
shadow:4px 4px 4px 4px rgb(199, 161, 143);  
box-shadow:4px 4px 4px 4px rgb(199, 161,  
143) }
```

Background

The CSS property to change the background color of an element to HunterLab 62.9405, 6.8567, 14.4242 is called "background". The background property can be set on classes, ids or directly on the HTML element.

```
.background, #background, body{  
background: rgb(199, 161, 143) }
```

If only the background color should be changed can be used:

```
.background{ background-color: rgb(199,  
161, 143) }
```

This example shows the color as background, it is applied via the CSS property "background".

To optimize and compress your CSS code, you can use our [online CSS compressor and optimizer](#) based on csstidy. If you want to create a linear or radial gradient as background or border, check our [CSS Gradient Generator](#).

Hey! You found this booklet interesting? Support Converting Colors with the new Membership Option!

The pro membership hides all ads, plus gives you double the colors in the color bucket, and more awesome pro features!

[Learn more, Memberships starting at \\$2.50/m!](#)

**Follow me
on Twitter!**

@ConvertingColor