

# Converting Colors

HunterLab(62.9168, 6.2266,  
7.5374)

Have a look what the booklet for  
HunterLab(62.9168, 6.2266, 7.5374)  
contains.

|   |    |
|---|----|
| <b>HunterLab(62.9168, 6.2266, 7.5374)</b> ..... | 3  |
| <b><i>Conversions</i></b> .....                 | 4  |
| <b><i>Details</i></b> .....                     | 6  |
| <b><i>Harmonies</i></b> .....                   | 12 |
| <b><i>Previews</i></b> .....                    | 24 |
| <b><i>Color Blindness Simulation</i></b> .....  | 28 |
| <b><i>CSS Examples</i></b> .....                | 31 |

# Color

**HunterLab(62.9168, 6.2266,  
7.5374)**

# Conversions

## Conversions Part 1

| Format      | Color                     |
|-------------|---------------------------|
| Hex         | C0A2A0                    |
| RGB         | 192, 162, 160             |
| RGB Percent | 75%, 64%, 63%             |
| CMY         | 0.2471, 0.3647, 0.3725    |
| CMYK        | 0.00, 0.16, 0.17, 0.25    |
| HSL         | 4°, 20%, 69%              |
| HSV         | 4°, 17%, 75%              |
| XYZ         | 41.0038, 39.5852, 38.7374 |
| YIQ         | 170.7420, 18.5220, 5.7380 |

# Conversions

## Conversions Part 2

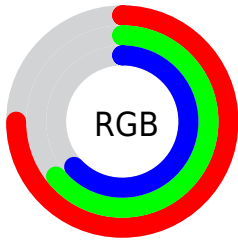
| <b>Format</b>                       | <b>Color</b>                  |
|-------------------------------------|-------------------------------|
| <b>R<sub>YB</sub></b>               | 192, 162, 160                 |
| Decimal                             | 12624544                      |
| CIE <sub>Lab</sub>                  | 69.17, 10.68, 5.14            |
| CIE <sub>LCh</sub>                  | 69, 11.846, 25.688            |
| Yxy                                 | 39.5870, 0.3436,<br>0.3317    |
| Android<br>(android.graphics.Color) | 4290814624<br>(0xFFC0A2A0)    |
| YUV                                 | 170.7420, -5.2958,<br>18.6433 |
| Hunter-Lab                          | 62.9168, 6.2266,<br>7.5374    |

# Details

The HunterLab color  $62.9168, 6.2266, 7.5374$  is a light color, and the websafe version is hex  $CC9999$ . A complement of this color would be  $69.3580, -12.1916, -0.1059$ , and the grayscale version is  $63.7256, -3.4002, 3.4623$ .

A 20% lighter version of the original color is  $86.4128, 6.0688, 9.2424$ , and  $42.0229, 6.3905, 5.5934$  is the 20% darker color. If you saturate the color by 10%, you get  $57.5085, 12.6695, 9.7582$ , and if you desaturate by 10%, it is  $68.6389, 0.0730, 5.3649$ .

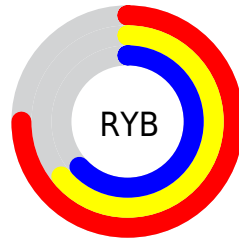
# Distribution



Red (75%)

Green (64%)

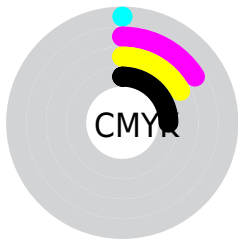
Blue (63%)



Red (75%)

Yellow (64%)

Blue (63%)

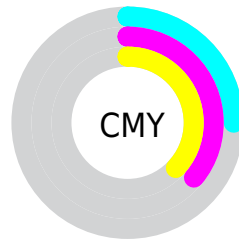


Cyan (0%)

Magenta (16%)

Yellow (17%)

Black (25%)



Cyan (25%)

Magenta (36%)


Yellow (37%)

# Brightness & Saturation Gradients

These gradients show how the HunterLab color 62.9168, 6.2266, 7.5374 changes by changing the brightness by 10 percent. The first figure shows a shift by +10% for each color and the second figure -10%.


Similar to the brightness gradients but the following saturation gradients show a change of the HunterLab color 62.9168, 6.2266, 7.5374 by changing the saturation by 10% instead.





 62.9168, 6.2266,  
7.5374


 62.9168, 6.2266,  
7.5374


185.5747, 3.6320,  
16.1086

 52.1696, 6.2530,  
6.6862


 86.3332, 5.9818,  
9.3013

 42.1142, 6.2095,  
5.8519

 98.9343, 5.7785,  
10.2130

 32.8034, 6.0839,  
5.0332


112.0950, 5.5262,  
11.1451

 24.3025, 5.8620,  
4.2258

125.7924, 5.2282,  
12.0976

 16.6975, 5.5234,  
3.4217

140.0064, 4.8875,  
13.0703

 10.1100, 5.0368,  
2.6970

154.7188, 4.5066,

0.0000, INF, NaN

14.0632

0.0000, NaN, NaN

169.9132, 4.0874,  
15.0760

0.0000, NaN, NaN

■ 62.9168, 6.2266,  
7.5374

■ 62.9168, 6.2266,  
7.5374

■ 57.5085, 12.6695,  
9.7582

■ 68.6389, 0.0730,  
5.3649

■ 52.4650, 19.4014,  
12.0069

■ 74.6263, -5.8046,  
3.2430

■ 47.8553, 26.3641,  
14.2462

■ 80.8448, -11.4381,  
1.1713

■ 43.7592, 33.4144,  
16.4059

■ 87.2658, -16.8600,  
-0.8548

■ 40.2659, 40.2817,  
18.3745

■ 93.8318, -22.2964,  
-2.3519

■ 37.4625, 46.5469,  
20.0017

■ 94.8402, -23.7796,  
-1.1209

■ 35.4151, 51.6903,  
21.1303

■ 34.1378, 55.2411,  
21.6834

■ 33.8674, 55.9998,  
21.8493

# Harmonies

## Analogous

The Analogous color harmony consists of three colors that are next to each other on the color wheel.



62.9182, 7.2783, 2.6813



62.9168, 6.2266, 7.5374



62.9182, 2.5707, 11.0149

# Triad

The Triadic color harmony groups three colors that are evenly spaced from another and form a triangle on the color wheel.



62.9182, 6.2246, 7.5384



62.9182, -11.6700, 8.7175



62.9182, -4.1355, -7.1865

# Complementary

The Complementary color scheme is a pair of colors which are on the opposite of each other on the color wheel.



62.9168, 6.2266, 7.5374



69.3580, -12.1916, -0.1059

# Split Complementary

Split-complementary colors differ from the complementary color scheme. The scheme consists of three colors, the original color and two neighbors of the complement color.



62.9182, -9.0799, -5.2472



62.9168, 6.2266, 7.5374



62.9182, -13.3363, 4.1593

# Square

The Square scheme is like the rectangle color scheme, but the four colors are evenly spaced on the color wheel.



62.9182, 6.2246, 7.5384



62.9182, -7.7773, 11.6545



62.9182, -12.4041, -0.9868



62.9182, 1.1815, -6.0927



# Rectangle

The Rectangle color scheme consists of four colors that form a rectangle on the color wheel.



62.9168, 6.2266, 7.5374



62.9182, -0.7858, 12.2242



62.9182, -12.4041, -0.9868



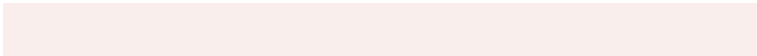
62.9182, -5.8945, -6.8635

# Sweetspot

The Sweet Spot groups the original color and five complimentary colors.



62.9182, 6.2246, 7.5384



93.6493, -1.1804, 6.7639



63.3118, 12.2633, -6.6088



43.1159, -0.2827, 3.2275



98.8636, -5.2751, 5.3714



45.2661, -2.4153, 2.4594



# Same Dimension

The Same Dimension uses a secret algorithm to generate beautiful new colors.



62.9182, 6.2246, 7.5384



81.9799, 11.5026, 11.2328



67.3995, -1.6192, 12.2462



31.9012, 0.8136, 2.8296



27.8552, 45.6883, 17.9641



6.0899, 8.5277, 3.9019

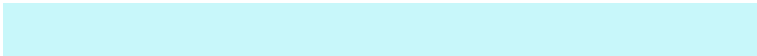


# Inverse Universe

The Inverse Universe completely reimagines the original color for something new.



69.3580, -12.1916, -0.1059



92.4909, -18.6042, -1.2575



64.5808, -4.5976, -6.0701



33.6406, -4.1505, 0.7676



49.5610, -24.0520, -10.0257

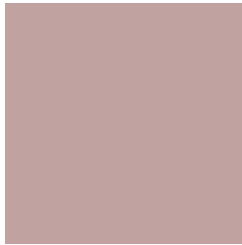


10.4619, -5.1954, -1.8612



# Previews

## White Background



This preview shows how the HunterLab color 62.9168, 6.2266, 7.5374 looks on a white background.

## Color Contrast Check

Large Text (above 18pt) WCAG AA × Fail

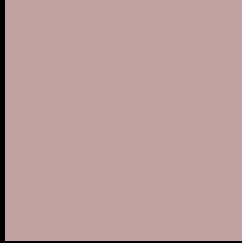
Any Text WCAG AA × Fail

Large Text (above 18pt) WCAG AAA × Fail

Any Text WCAG AAA × Fail



# Black Background



This preview shows how the HunterLab color 62.9168, 6.2266, 7.5374 looks on a black background.

## Color Contrast Check

Large Text (above 18pt) WCAG AA ✓ Pass

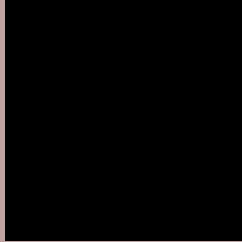
Any Text WCAG AA ✓ Pass

Large Text (above 18pt) WCAG AAA ✓ Pass

Any Text WCAG AAA ✓ Pass

If you want to check with other color combinations, try the [Color Contrast Checker](#).

# HunterLab 62.9168, 6.2266, 7.5374 Background



This preview shows how black text looks on a background with the HunterLab color 62.9168, 6.2266, 7.5374.



This preview shows how white text looks on a background with the HunterLab color 62.9168, 6.2266,

7.5374.

# Color Blindness Simulation

Color vision deficiency is a very complex topic, and I could not describe the different causes any better than Wikipedia does, so if you want to learn more, you should check out their [article about color blindness](#).

## Dichromacy



### Original Color

62.9168, 6.2266, 7.5374

### Protanopia

62.8759, -2.5880, 6.0244

### Deuteranopia

62.8898, 4.6913, 7.4805



## Tritanopia

62.9508, 9.9548, 1.7282

# Trichromacy



## Original Color

62.9168, 6.2266, 7.5374

## Protanomaly

62.9161, 0.4880, 6.5648

## Deuteranomaly

62.9917, 5.0326, 7.6000

## Tritanomaly

62.9717, 8.3005, 4.0683

# Monochromacy



## Original Color

62.9168, 6.2266, 7.5374

## Achromatopsia

63.8154, -3.4050, 3.4672

## Achromatomaly

63.5445, -0.0538, 5.0434

# CSS Examples

## Text

The CSS property to change the color of the text to HunterLab 62.9168, 6.2266, 7.5374 is called "color". The color property can be set on classes, ids or directly on the HTML element.

This example shows how text in the color `rgb(192, 162, 160)` looks like.

```
.text, #text, p{  
    color:rgb(192, 162, 160)  
}
```

If you want to add a text shadow in that color use the text-shadow property, you can generate a text shadow directly with our [CSS Text Shadow Generator](#).

Here you see how black text with a 4 pixel rgb(192, 162, 160) colored shadow looks like.

```
.shadow{ text-shadow: 4px 4px 2px rgb(192, 162, 160) }
```

## Border

The CSS property to change the border of an element to HunterLab 62.9168, 6.2266, 7.5374 is called "border".

The border property can be set on classes, ids or directly on the HTML element.

This example shows the color as border, it can be applied via the CSS property "border" or "border-color".

```
.border, #border, table{ border:4px solid rgb(192, 162, 160) }
```



If only the border color should be changed use the property `border-color`.

```
.border{ border-color:rgb(192, 162, 160) }
```

If you want to add a box shadow in that color use:

Here you see how a box with a 4 pixel `rgb(192, 162, 160)` colored shadow looks like.

```
.boxshadow{ -moz-box-shadow:4px 4px 4px 4px rgb(192, 162, 160); -webkit-box-shadow:4px 4px 4px 4px rgb(192, 162, 160); box-shadow:4px 4px 4px 4px rgb(192, 162, 160) }
```

# Background

The CSS property to change the background color of an element to HunterLab 62.9168, 6.2266, 7.5374 is called "background". The background property can be set on classes, ids or directly on the HTML element.

```
.background, #background, body{  
background: rgb(192, 162, 160) }
```

If only the background color should be changed can be used:

```
.background{ background-color: rgb(192,  
162, 160) }
```

This example shows the color as background, it is applied via the CSS property "background".

To optimize and compress your CSS code, you can use our [online CSS compressor and optimizer](#) based on csstidy. If you want to create a linear or radial gradient as background or border, check our [CSS Gradient Generator](#).

Hey! You found this booklet interesting? Support Converting Colors with the new Membership Option!

The pro membership hides all ads, plus gives you double the colors in the color bucket, and more awesome pro features!

**[Learn more, Memberships starting at \\$2.50/m!](#)**

**Follow me  
on Twitter!**

@ConvertingColor