

Converting Colors

HunterLab(62.9490, 7.5252,
9.2989)

Have a look what the booklet for
HunterLab(62.9490, 7.5252, 9.2989)
contains.

HunterLab(62.9490, 7.5477, 9.2968)	3
<i>Conversions</i>	4
<i>Details</i>	6
<i>Harmonies</i>	12
<i>Previews</i>	24
<i>Color Blindness Simulation</i>	28
<i>CSS Examples</i>	31

Color

**HunterLab(62.9490, 7.5477,
9.2968)**

Conversions

Conversions Part 1

Format	Color
Hex	C4A19C
RGB	196, 161, 156
RGB Percent	77%, 63%, 61%
CMY	0.2314, 0.3686, 0.3882
CMYK	0.00, 0.18, 0.20, 0.23
HSL	8°, 25%, 69%
HSV	8°, 20%, 77%
XYZ	41.5105, 39.6258, 36.9131
YIQ	170.8950, 22.4650, 5.8650

Conversions

Conversions Part 2

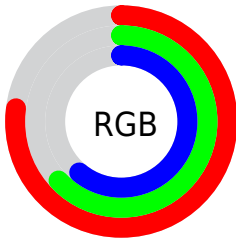
Format	Color
R _Y B	196, 162, 156
Decimal	12886428
CIE Lab	69.20, 12.10, 7.45
CIE LCh	69, 14.207, 31.606
Yxy	39.6276, 0.3516, 0.3357
Android (android.graphics.Color)	4291076508 (0xFFC4A19C)
YUV	170.8950, -7.3432, 22.0171
Hunter-Lab	62.9490, 7.5477, 9.2968

Details

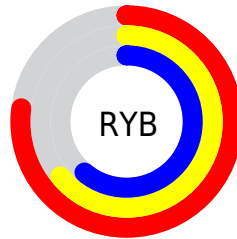
The HunterLab color $62.9490, 7.5477, 9.2968$ is a light color, and the websafe version is hex $CC9999$. A complement of this color would be $69.5081, -12.9993, -1.9445$, and the grayscale version is $63.7960, -3.4040, 3.4662$.

A 20% lighter version of the original color is $86.3988, 7.2576, 11.5239$, and $42.0809, 7.6905, 7.2345$ is the 20% darker color. If you saturate the color by 10%, you get $57.8169, 13.6356, 11.8257$, and if you desaturate by 10%, it is $68.3786, 1.7579, 6.7296$.

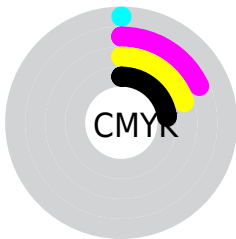
Distribution



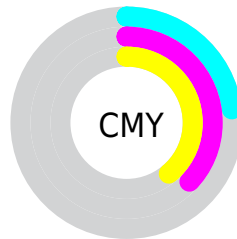
- Red (77%)
- Green (63%)
- Blue (61%)



- Red (77%)
- Yellow (64%)
- Blue (61%)



- Cyan (0%)
- Magenta (18%)
- Yellow (20%)
- Black (23%)



- Cyan (23%)
- Magenta (37%)
- Yellow (39%)

Brightness & Saturation Gradients

These gradients show how the HunterLab color 62.9490, 7.5477, 9.2968 changes by changing the brightness by 10 percent. The first figure shows a shift by +10% for each color and the second figure -10%.

Similar to the brightness gradients but the following saturation gradients show a change of the HunterLab color 62.9490, 7.5477, 9.2968 by changing the saturation by 10% instead.

62.9490, 7.5477,
9.2968

62.9490, 7.5477,
9.2968

185.6209, 5.4670,
18.7480

52.1999, 7.5042,
8.3196

86.3690, 7.4326,
11.2895

42.1424, 7.3869,
7.3493

98.9717, 7.2901,
12.3064

32.8293, 7.1829,
6.3818

112.1340, 7.0963,
13.3388

24.3260, 6.8770,
5.4086

125.8330, 6.8547,
14.3873

16.7182, 6.4479,
4.4146

140.0485, 6.5686,
15.4522

10.1275, 5.8636,
3.6420

154.7622, 6.2405,

0.0000, INF, NaN

16.5339

0.0000, NaN, NaN

169.9580, 5.8726,
17.6325

0.0000, NaN, NaN

■ 62.9490, 7.5477,
9.2968

■ 62.9490, 7.5477,
9.2968

■ 57.8169, 13.6356,
11.8257

■ 68.3786, 1.7579,
6.7296

■ 53.0274, 20.0232,
14.2771

■ 74.0610, -3.7456,
4.1424

■ 48.6414, 26.6597,
16.5943

■ 79.9649, -8.9932,
1.5480

■ 44.7281, 33.4231,
18.6912

■ 86.0635, -14.0163,
-1.0479

■ 41.3634, 40.0856,
20.4517

■ 92.3351, -18.8452,
-3.6429

■ 38.6214, 46.2947,
21.7414

■ 95.1188, -22.7570,
-0.7581

■ 36.5593, 51.6030,
22.4463

■ 35.2288, 55.4071,
22.6778

Harmonies

Analogous

The Analogous color harmony consists of three colors that are next to each other on the color wheel.



62.9504, 9.5128, 3.7560



62.9490, 7.5477, 9.2968



62.9504, 2.6410, 12.9414

Triad

The Triadic color harmony groups three colors that are evenly spaced from another and form a triangle on the color wheel.



62.9504, 7.5456, 9.2978



62.9504, -13.8989, 8.7796



62.9504, -3.0146, -9.5356

Complementary

The Complementary color scheme is a pair of colors which are on the opposite of each other on the color wheel.



62.9490, 7.5477, 9.2968



69.5081, -12.9993, -1.9445

Split Complementary

Split-complementary colors differ from the complementary color scheme. The scheme consists of three colors, the original color and two neighbors of the complement color.



62.9504, -9.1486, -7.8531



62.9490, 7.5477, 9.2968



62.9504, -15.2791, 3.0953

Square

The Square scheme is like the rectangle color scheme, but the four colors are evenly spaced on the color wheel.



62.9504, 7.5456, 9.2978



62.9504, -9.7271, 12.6640



62.9504, -13.5745, -3.0711



62.9504, 3.2660, -7.4651

Rectangle

The Rectangle color scheme consists of four colors that form a rectangle on the color wheel.



62.9490, 7.5477, 9.2968



62.9504, -1.5426, 14.0105



62.9504, -13.5745, -3.0711



62.9504, -5.1615, -9.3894

Sweetspot

The Sweet Spot groups the original color and five complimentary colors.



62.9504, 7.5456, 9.2978



95.2933, -0.8740, 7.5576



62.6813, 15.8774, -7.9040



43.8533, -0.1759, 3.6033

0.0000, NaN, NaN



46.2646, -2.4686, 2.5136

Same Dimension

The Same Dimension uses a secret algorithm to generate beautiful new colors.



62.9504, 7.5456, 9.2978



81.9342, 13.3598, 13.8733



68.5921, -2.3526, 15.0375



32.0568, 0.5433, 3.0026



28.3628, 44.0078, 18.2474



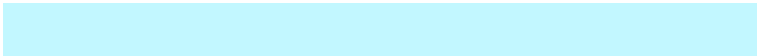
6.4485, 7.4555, 4.1041

Inverse Universe

The Inverse Universe completely reimagines the original color for something new.



69.5081, -12.9993, -1.9445



92.4095, -19.5243, -4.0999



63.4868, -3.4161, -9.7120



33.4760, -3.8879, 0.5730



46.3457, -20.0150, -14.7214



9.9475, -4.5590, -2.5919

Previews

White Background



This preview shows how the HunterLab color 62.9490, 7.5477, 9.2968 looks on a white background.

Color Contrast Check

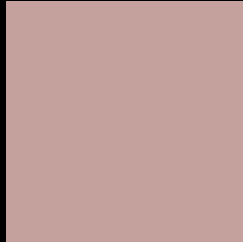
Large Text (above 18pt) WCAG AA × Fail

Any Text WCAG AA × Fail

Large Text (above 18pt) WCAG AAA × Fail

Any Text WCAG AAA × Fail

Black Background



This preview shows how the HunterLab color 62.9490, 7.5477, 9.2968 looks on a black background.

Color Contrast Check

Large Text (above 18pt) WCAG AA ✓ Pass

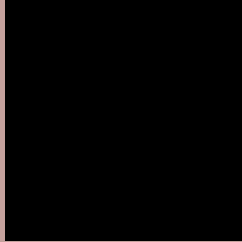
Any Text WCAG AA ✓ Pass

Large Text (above 18pt) WCAG AAA ✓ Pass

Any Text WCAG AAA ✓ Pass

If you want to check with other color combinations, try the [Color Contrast Checker](#).

HunterLab 62.9490, 7.5477, 9.2968 Background



This preview shows how black text looks on a background with the HunterLab color 62.9490, 7.5477, 9.2968.



This preview shows how white text looks on a background with the HunterLab color 62.9490, 7.5477,

9.2968.

Color Blindness Simulation

Color vision deficiency is a very complex topic, and I could not describe the different causes any better than Wikipedia does, so if you want to learn more, you should check out their [article about color blindness](#).

Dichromacy



Original Color

62.9490, 7.5477, 9.2968

Protanopia

62.8824, -2.7345, 7.3423

Deuteranopia

62.8823, 4.4471, 9.1699



Tritanopia

63.0415, 11.5367, 2.8125

Trichromacy



Original Color

62.9490, 7.5477, 9.2968

Protanomaly

62.7364, 1.1885, 7.6797

Deuteranomaly

62.8072, 5.6425, 9.1091

Tritanomaly

63.0596, 9.8912, 5.1104

Monochromacy



Original Color

62.9490, 7.5477, 9.2968

Achromatopsia

63.8154, -3.4050, 3.4672

Achromatomaly

63.3197, 0.6097, 5.2476

CSS Examples

Text

The CSS property to change the color of the text to HunterLab 62.9490, 7.5477, 9.2968 is called "color". The color property can be set on classes, ids or directly on the HTML element.

This example shows how text in the color `rgb(196, 161, 156)` looks like.

```
.text, #text, p{  
    color:rgb(196, 161, 156)  
}
```

If you want to add a text shadow in that color use the text-shadow property, you can generate a text shadow directly with our [CSS Text Shadow Generator](#).

Here you see how black text with a 4 pixel rgb(196, 161, 156) colored shadow looks like.

```
.shadow{ text-shadow: 4px 4px 2px rgb(196, 161, 156) }
```

Border

The CSS property to change the border of an element to HunterLab 62.9490, 7.5477, 9.2968 is called "border".

The border property can be set on classes, ids or directly on the HTML element.

This example shows the color as border, it can be applied via the CSS property "border" or "border-color".

```
.border, #border, table{ border:4px solid rgb(196, 161, 156) }
```


If only the border color should be changed use the property `border-color`.

```
.border{ border-color:rgb(196, 161, 156) }
```

If you want to add a box shadow in that color use:

Here you see how a box with a 4 pixel `rgb(196, 161, 156)` colored shadow looks like.

```
.boxshadow{ -moz-box-shadow:4px 4px 4px  
4px rgb(196, 161, 156); -webkit-box-  
shadow:4px 4px 4px 4px rgb(196, 161, 156);  
box-shadow:4px 4px 4px 4px rgb(196, 161,  
156) }
```

Background

The CSS property to change the background color of an element to HunterLab 62.9490, 7.5477, 9.2968 is called "background". The background property can be set on classes, ids or directly on the HTML element.

```
.background, #background, body{  
background: rgb(196, 161, 156) }
```

If only the background color should be changed can be used:

```
.background{ background-color: rgb(196,  
161, 156) }
```

This example shows the color as background, it is applied via the CSS property "background".

To optimize and compress your CSS code, you can use our [online CSS compressor and optimizer](#) based on csstidy. If you want to create a linear or radial gradient as background or border, check our [CSS Gradient Generator](#).

Hey! You found this booklet interesting? Support Converting Colors with the new Membership Option!

The pro membership hides all ads, plus gives you double the colors in the color bucket, and more awesome pro features!

[Learn more, Memberships starting at \\$2.50/m!](#)

**Follow me
on Twitter!**

@ConvertingColor