

Converting Colors

HunterLab(62.9799, 4.8393,
16.5219)

Have a look what the booklet for
HunterLab(62.9799, 4.8393,
16.5219) contains.

HunterLab(62.8626, 4.8822, 16.4993)	3
<i>Conversions</i>	4
<i>Details</i>	6
<i>Harmonies</i>	12
<i>Previews</i>	24
<i>Color Blindness Simulation</i>	28
<i>CSS Examples</i>	31

Color

**HunterLab(62.8626, 4.8822,
16.4993)**

Conversions

Conversions Part 1

Format	Color
Hex	C5A289
RGB	197, 162, 137
RGB Percent	77%, 64%, 54%
CMY	0.2275, 0.3647, 0.4627
CMYK	0.00, 0.18, 0.30, 0.23
HSL	25°, 34%, 65%
HSV	25°, 30%, 77%
XYZ	40.4616, 39.5171, 29.1618
YIQ	169.6150, 28.8850, -0.3550

Conversions

Conversions Part 2

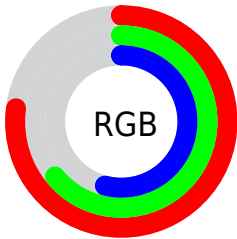
Format	Color
RYB	197, 180, 137
Decimal	12952201
CIELab	69.13, 9.21, 17.85
CIELCh	69, 20.086, 62.698
Yxy	39.5189, 0.3707, 0.3621
Android (android.graphics.Color)	4291142281 (0xFFC5A289)
YUV	169.6150, -16.0792, 24.0166
Hunter-Lab	62.8626, 4.8822, 16.4993

Details

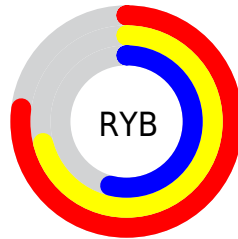
The HunterLab color $62.8626, 4.8822, 16.4993$ is a light color, and the websafe version is hex $CC9999$. A complement of this color would be $62.3325, -8.4333, -11.9837$, and the grayscale version is $63.2996, -3.3775, 3.4392$.

A 20% lighter version of the original color is $86.2637, 4.1903, 19.7461$, and $41.9413, 5.1314, 13.1873$ is the 20% darker color. If you saturate the color by 10%, you get $59.2782, 8.4109, 19.7482$, and if you desaturate by 10%, it is $66.6122, 1.6699, 12.8023$.

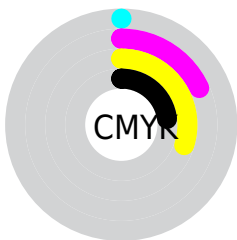
Distribution



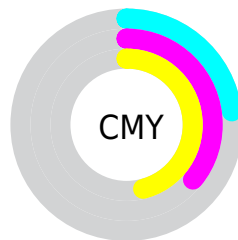
- Red (77%)
- Green (64%)
- Blue (54%)



- Red (77%)
- Yellow (71%)
- Blue (54%)



- Cyan (0%)
- Magenta (18%)
- Yellow (30%)
- Black (23%)



- Cyan (23%)
- Magenta (36%)
- Yellow (46%)

Brightness & Saturation Gradients

These gradients show how the HunterLab color 62.8626, 4.8822, 16.4993 changes by changing the brightness by 10 percent. The first figure shows a shift by +10% for each color and the second figure -10%.

Similar to the brightness gradients but the following saturation gradients show a change of the HunterLab color 62.8626, 4.8822, 16.4993 by changing the saturation by 10% instead.

62.8626, 4.8822,
16.4993

62.8626, 4.8822,
16.4993

185.4971, 1.7571,
30.1028

52.1187, 4.9806,
14.9174

86.2730, 4.5030,
19.5825

42.0668, 5.0136,
13.2907

98.8713, 4.2369,
21.0983

32.7598, 4.9694,
11.6004

112.0293, 3.9243,
22.6044

24.2631, 4.8350,
9.8167

125.7242, 3.5682,
24.1050

16.6627, 4.5913,
7.8901

139.9357, 3.1713,
25.6029

10.0806, 4.2083,
7.0564

154.6457, 2.7359,

0.0000, INF, NaN

27.1006

0.0000, NaN, NaN

169.8377, 2.2639,
28.6000

0.0000, NaN, NaN

■ 62.8626, 4.8822,
16.4993

■ 62.8626, 4.8822,
16.4993

■ 59.2782, 8.4109,
19.7482

■ 66.6122, 1.6699,
12.8023

■ 55.8721, 12.2779,
22.4854

■ 70.5072, -1.2399,
8.7096

■ 52.6650, 16.4856,
24.6470

■ 74.5354, -3.8731,
4.2700

■ 49.6777, 21.0216,
26.1696

■ 78.6849, -6.2534,
-0.4752

■ 46.9318, 25.8483,
27.0012

■ 82.9452, -8.4044,
-5.4905

■ 44.4482, 30.8930,
27.1196

■ 87.2997, -10.3890,
-10.6415

■ 42.3315, 35.7679,
26.7107

■ 91.0248, -16.2216,
-5.8188

■ 94.8303, -21.9662,
-1.1014

■ 95.1895, -22.4981,
-0.6662

Harmonies

Analogous

The Analogous color harmony consists of three colors that are next to each other on the color wheel.



62.8641, 12.0717, 11.7738



62.8626, 4.8822, 16.4993



62.8641, -4.1799, 17.8939

Triad

The Triadic color harmony groups three colors that are evenly spaced from another and form a triangle on the color wheel.



62.8641, 4.8799, 16.5002



62.8641, -19.9145, 2.6326



62.8641, 6.3869, -12.2767

Complementary

The Complementary color scheme is a pair of colors which are on the opposite of each other on the color wheel.



62.8626, 4.8822, 16.4993



62.3325, -8.4333, -11.9837

Split Complementary

Split-complementary colors differ from the complementary color scheme. The scheme consists of three colors, the original color and two neighbors of the complement color.



62.8641, -2.5311, -15.6007



62.8626, 4.8822, 16.4993



62.8641, -17.4289, -6.2609

Square

The Square scheme is like the rectangle color scheme, but the four colors are evenly spaced on the color wheel.



62.8641, 4.8799, 16.5002



62.8641, -18.1771, 10.5948



62.8641, -11.1917, -13.2576



62.8641, 12.9760, -4.7106

Rectangle

The Rectangle color scheme consists of four colors that form a rectangle on the color wheel.



62.8626, 4.8822, 16.4993



62.8641, -9.9746, 16.9344



62.8641, -11.1917, -13.2576



62.8641, 3.5448, -13.9722

Sweetspot

The Sweet Spot groups the original color and five complimentary colors.



62.8641, 4.8799, 16.5002



95.0599, -2.1444, 10.8981



57.2194, 22.8342, -4.7843



43.6158, -0.7404, 5.4347

0.0000, NaN, NaN



46.2646, -2.4686, 2.5136

Same Dimension

The Same Dimension uses a secret algorithm to generate beautiful new colors.



62.8641, 4.8799, 16.5002



80.6939, 9.8458, 25.2398



71.6770, -9.9051, 24.4164



33.6913, -0.7286, 3.9191



34.5590, 28.4284, 21.7928



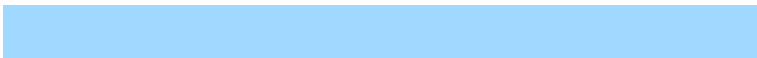
8.4136, 4.0780, 5.2558

Inverse Universe

The Inverse Universe completely reimagines the original color for something new.



62.3325, -8.4333, -11.9837



79.8180, -11.8711, -21.3004



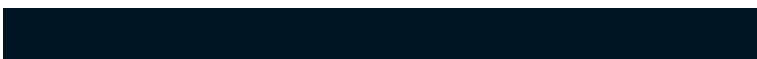
53.5687, 6.4464, -25.3435



33.6125, -2.7322, -0.3576



32.9696, 0.4396, -42.1581



8.0956, -1.4054, -7.0848

Previews

White Background



This preview shows how the HunterLab color 62.8626, 4.8822, 16.4993 looks on a white background.

Color Contrast Check

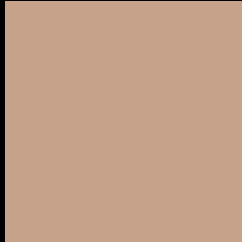
Large Text (above 18pt) WCAG AA × Fail

Any Text WCAG AA × Fail

Large Text (above 18pt) WCAG AAA × Fail

Any Text WCAG AAA × Fail

Black Background



This preview shows how the HunterLab color 62.8626, 4.8822, 16.4993 looks on a black background.

Color Contrast Check

Large Text (above 18pt) WCAG AA ✓ Pass

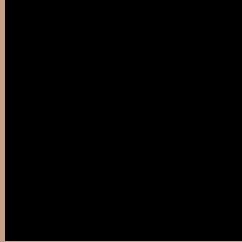
Any Text WCAG AA ✓ Pass

Large Text (above 18pt) WCAG AAA ✓ Pass

Any Text WCAG AAA ✓ Pass

If you want to check with other color combinations, try the [Color Contrast Checker](#).

HunterLab 62.8626, 4.8822, 16.4993 Background



This preview shows how black text looks on a background with the HunterLab color 62.8626, 4.8822, 16.4993.



This preview shows how white text looks on a background with the HunterLab color 62.8626, 4.8822,

Color Blindness Simulation

Color vision deficiency is a very complex topic, and I could not describe the different causes any better than Wikipedia does, so if you want to learn more, you should check out their [article about color blindness](#).

Dichromacy



Original Color

62.8626, 4.8822, 16.4993

Protanopia

63.0352, -4.7391, 15.4222

Deuteranopia

62.7555, 4.5233, 16.3889



Tritanopia

62.7963, 13.4723, 3.0239

Trichromacy



Original Color

62.8626, 4.8822, 16.4993

Protanomaly

62.8099, -1.0608, 15.6273

Deuteranomaly

62.7555, 4.5233, 16.3889

Tritanomaly

62.8842, 10.2762, 8.4300

Monochromacy



Original Color

62.8626, 4.8822, 16.4993

Achromatopsia

63.4017, -3.3830, 3.4447

Achromatomaly

63.0947, -0.6114, 8.4708

CSS Examples

Text

The CSS property to change the color of the text to HunterLab 62.8626, 4.8822, 16.4993 is called "color". The color property can be set on classes, ids or directly on the HTML element.

This example shows how text in the color `rgb(197, 162, 137)` looks like.

```
.text, #text, p{  
  color:rgb(197, 162, 137)  
}
```

If you want to add a text shadow in that color use the text-shadow property, you can generate a text shadow directly with our [CSS Text Shadow Generator](#).

Here you see how black text with a 4 pixel rgb(197, 162, 137) colored shadow looks like.

```
.shadow{ text-shadow: 4px 4px 2px rgb(197, 162, 137) }
```

Border

The CSS property to change the border of an element to HunterLab 62.8626, 4.8822, 16.4993 is called "border". The border property can be set on classes, ids or directly on the HTML element.

This example shows the color as border, it can be applied via the CSS property "border" or "border-color".

```
.border, #border, table{ border:4px solid rgb(197, 162, 137) }
```


If only the border color should be changed use the property `border-color`.

```
.border{ border-color:rgb(197, 162, 137) }
```

If you want to add a box shadow in that color use:

Here you see how a box with a 4 pixel `rgb(197, 162, 137)` colored shadow looks like.

```
.boxshadow{ -moz-box-shadow:4px 4px 4px  
4px rgb(197, 162, 137); -webkit-box-  
shadow:4px 4px 4px 4px rgb(197, 162, 137);  
box-shadow:4px 4px 4px 4px rgb(197, 162,  
137) }
```

Background

The CSS property to change the background color of an element to HunterLab 62.8626, 4.8822, 16.4993 is called "background". The background property can be set on classes, ids or directly on the HTML element.

```
.background, #background, body{  
background: rgb(197, 162, 137) }
```

If only the background color should be changed can be used:

```
.background{ background-color: rgb(197,  
162, 137) }
```

This example shows the color as background, it is applied via the CSS property "background".

To optimize and compress your CSS code, you can use our [online CSS compressor and optimizer](#) based on csstidy. If you want to create a linear or radial gradient as background or border, check our [CSS Gradient Generator](#).

Hey! You found this booklet interesting? Support Converting Colors with the new Membership Option!

The pro membership hides all ads, plus gives you double the colors in the color bucket, and more awesome pro features!

[Learn more, Memberships starting at \\$2.50/m!](#)

**Follow me
on Twitter!**

@ConvertingColor