

Converting Colors

HunterLab(62.9872, 8.6320,
7.4417)

Have a look what the booklet for
HunterLab(62.9872, 8.6320, 7.4417)
contains.

HunterLab(63.1928, 8.6254, 7.4543)	3
<i>Conversions</i>	4
<i>Details</i>	6
<i>Harmonies</i>	12
<i>Previews</i>	24
<i>Color Blindness Simulation</i>	28
<i>CSS Examples</i>	31

Color

**HunterLab(63.1928, 8.6254,
7.4543)**

Conversions

Conversions Part 1

Format	Color
Hex	C5A1A1
RGB	197, 161, 161
RGB Percent	77%, 63%, 63%
CMY	0.2274, 0.3686, 0.3686
CMYK	0.00, 0.18, 0.18, 0.23
HSL	0°, 24%, 70%
HSV	0°, 18%, 77%
XYZ	42.2039, 39.9333, 39.2018
YIQ	171.7640, 21.4560, 7.6320

Conversions

Conversions Part 2

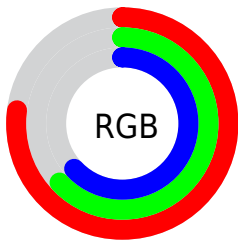
Format	Color
RYB	197, 161, 161
Decimal	12951969
CIELab	69.42, 13.25, 5.00
CIELCh	69, 14.165, 20.671
Yxy	39.9351, 0.3478, 0.3291
Android (android.graphics.Color)	4291142049 (0xFFC5A1A1)
YUV	171.7640, -5.3067, 22.1320
Hunter-Lab	63.1928, 8.6254, 7.4543

Details

The HunterLab color **63.1928, 8.6254, 7.4543** is a light color, and the websafe version is hex **CC9999**. A complement of this color would be **71.7910, -14.3889, 0.3600**, and the grayscale version is **64.1480, -3.4228, 3.4853**.

A 20% lighter version of the original color is **86.6836, 8.5591, 9.1285**, and **42.3116, 8.6869, 5.5529** is the 20% darker color. If you saturate the color by 10%, you get **57.3959, 15.9528, 9.4939**, and if you desaturate by 10%, it is **69.3696, 1.5996, 5.5464**.

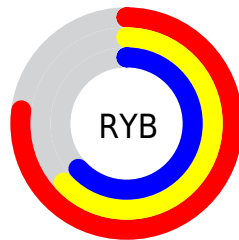
Distribution



Red (77%)

Green (63%)

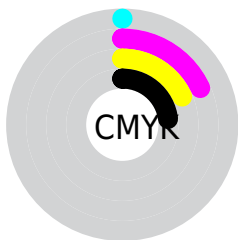
Blue (63%)



Red (77%)

Yellow (63%)

Blue (63%)

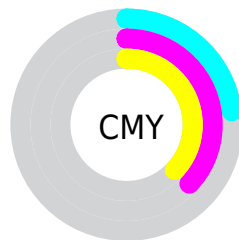


Cyan (0%)

Magenta (18%)

Yellow (18%)

Black (23%)



Cyan (23%)


Magenta (37%)

Yellow (37%)

Brightness & Saturation Gradients


These gradients show how the HunterLab color 63.1928, 8.6254, 7.4543 changes by changing the brightness by 10 percent. The first figure shows a shift by +10% for each color and the second figure -10%.


Similar to the brightness gradients but the following saturation gradients show a change of the HunterLab color 63.1928, 8.6254, 7.4543 by changing the saturation by 10% instead.


 63.1928, 8.6254,
7.4543


 63.1928, 8.6254,
7.4543


185.9704, 6.9496,
15.9792

 52.4290, 8.5274,
6.6099


 86.6399, 8.6121,
9.2061

 42.3557, 8.3527,
5.7829


 99.2552, 8.5174,
10.1122

 33.0257, 8.0880,
4.9724


112.4295, 8.3696,
11.0390

 24.5037, 7.7175,
4.1743

126.1401, 8.1726,
11.9864

 16.8751, 7.2195,
3.3811

140.3667, 7.9295,
12.9544

 10.2603, 6.5622,
2.6385

155.0912, 7.6431,

0.0000, INF, NaN

13.9426

0.0000, NaN, NaN

170.2974, 7.3158,
14.9510

0.0000, NaN, NaN

■ 63.1928, 8.6254,
7.4543

■ 63.1928, 8.6254,
7.4543

■ 57.3959, 15.9528,
9.4939

■ 69.3696, 1.5996,
5.5464

■ 52.0470, 23.5551,
11.6561

■ 75.8643, -5.1285,
3.7595

■ 47.2366, 31.3139,
13.9095

■ 82.6326, -11.5906,
2.0814

■ 43.0690, 38.9769,
16.1768

■ 89.6385, -17.8223,
0.4977

■ 39.6550, 46.1083,
18.3202

■ 95.1895, -22.4980,
-0.6662

■ 37.0915, 52.1074,
20.1451

■ 35.4262, 56.3644,
21.4507

■ 34.5718, 58.6748,
22.1627

■ 34.4541, 59.0004,
22.2633

Harmonies

Analogous

The Analogous color harmony consists of three colors that are next to each other on the color wheel.



63.1942, 9.3039, 1.5019



63.1928, 8.6254, 7.4543



63.1942, 4.6594, 11.8840

Triad

The Triadic color harmony groups three colors that are evenly spaced from another and form a triangle on the color wheel.



63.1942, 8.6233, 7.4554



63.1942, -12.6644, 10.4542



63.1942, -5.3686, -9.3121

Complementary

The Complementary color scheme is a pair of colors which are on the opposite of each other on the color wheel.



63.1928, 8.6254, 7.4543



71.7910, -14.3889, 0.3600

Split Complementary

Split-complementary colors differ from the complementary color scheme. The scheme consists of three colors, the original color and two neighbors of the complement color.



63.1942, -11.0276, -6.3590



63.1928, 8.6254, 7.4543



63.1942, -15.1274, 5.3183

Square

The Square scheme is like the rectangle color scheme, but the four colors are evenly spaced on the color wheel.



63.1942, 8.6233, 7.4554



63.1942, -7.6840, 13.4914



63.1942, -14.5405, -0.8578



63.1942, 1.0521, -8.5936

Rectangle

The Rectangle color scheme consists of four colors that form a rectangle on the color wheel.



63.1928, 8.6254, 7.4543



63.1942, 0.7726, 13.5694



63.1942, -14.5405, -0.8578



63.1942, -7.4189, -8.7057

Sweetspot

The Sweet Spot groups the original color and five complimentary colors.



63.1942, 8.6233, 7.4554



95.5719, -0.7793, 6.6412



64.3365, 14.6190, -8.7805



43.9318, -0.0606, 3.1526

0.0000, NaN, NaN



46.2646, -2.4686, 2.5136

Same Dimension

The Same Dimension uses a secret algorithm to generate beautiful new colors.



63.1942, 8.6233, 7.4554



81.3525, 15.4782, 11.0651



68.3258, -0.4946, 12.8338



32.6146, 1.1244, 2.7325



27.9428, 47.8496, 18.0559



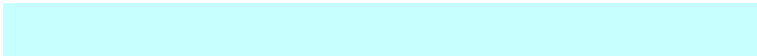
6.0809, 10.4104, 3.9293

Inverse Universe

The Inverse Universe completely reimagines the original color for something new.



71.7910, -14.3889, 0.3600



95.3230, -21.9996, -0.4926



66.2186, -5.6409, -6.5918



34.7382, -4.5430, 0.9856



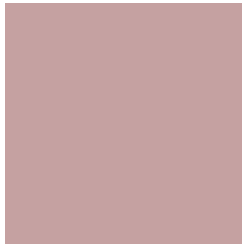
53.7690, -28.5021, -5.6787



11.7004, -6.2024, -1.2353

Previews

White Background



This preview shows how the HunterLab color 63.1928, 8.6254, 7.4543 looks on a white background.

Color Contrast Check

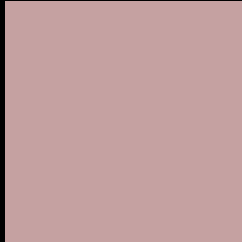
Large Text (above 18pt) WCAG AA × Fail

Any Text WCAG AA × Fail

Large Text (above 18pt) WCAG AAA × Fail

Any Text WCAG AAA × Fail

Black Background



This preview shows how the HunterLab color 63.1928, 8.6254, 7.4543 looks on a black background.

Color Contrast Check

Large Text (above 18pt) WCAG AA ✓ Pass

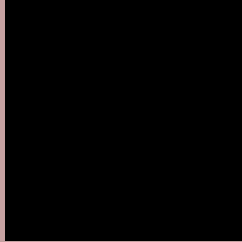
Any Text WCAG AA ✓ Pass

Large Text (above 18pt) WCAG AAA ✓ Pass

Any Text WCAG AAA ✓ Pass

If you want to check with other color combinations, try the [Color Contrast Checker](#).

HunterLab 63.1928, 8.6254, 7.4543 Background



This preview shows how black text looks on a background with the HunterLab color 63.1928, 8.6254, 7.4543.



This preview shows how white text looks on a background with the HunterLab color 63.1928, 8.6254,

Color Blindness Simulation

Color vision deficiency is a very complex topic, and I could not describe the different causes any better than Wikipedia does, so if you want to learn more, you should check out their [article about color blindness](#).

Dichromacy



Original Color

63.1928, 8.6254, 7.4543

Protanopia

63.3176, -2.4528, 5.6401

Deuteranopia

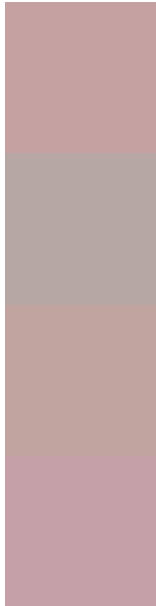
63.2741, 4.5270, 7.9049



Tritanopia

63.0719, 11.6958, 2.3799

Trichromacy



Original Color

63.1928, 8.6254, 7.4543

Protanomaly

63.1647, 1.4495, 5.9797

Deuteranomaly

63.3008, 6.0640, 7.9613

Tritanomaly

63.2254, 10.5495, 4.4040

Monochromacy



Original Color

63.1928, 8.6254, 7.4543

Achromatopsia

64.2295, -3.4271, 3.4897

Achromatomaly

63.7622, 0.7491, 4.8556

CSS Examples

Text

The CSS property to change the color of the text to HunterLab 63.1928, 8.6254, 7.4543 is called "color". The color property can be set on classes, ids or directly on the HTML element.

This example shows how text in the color `rgb(197, 161, 161)` looks like.

```
.text, #text, p{  
    color:rgb(197, 161, 161)  
}
```

If you want to add a text shadow in that color use the text-shadow property, you can generate a text shadow directly with our [CSS Text Shadow Generator](#).

Here you see how black text with a 4 pixel rgb(197, 161, 161) colored shadow looks like.

```
.shadow{ text-shadow: 4px 4px 2px rgb(197, 161, 161) }
```

Border

The CSS property to change the border of an element to HunterLab 63.1928, 8.6254, 7.4543 is called "border".

The border property can be set on classes, ids or directly on the HTML element.

This example shows the color as border, it can be applied via the CSS property "border" or "border-color".

```
.border, #border, table{ border:4px solid rgb(197, 161, 161) }
```


If only the border color should be changed use the property `border-color`.

```
.border{ border-color:rgb(197, 161, 161) }
```

If you want to add a box shadow in that color use:

Here you see how a box with a 4 pixel `rgb(197, 161, 161)` colored shadow looks like.

```
.boxshadow{ -moz-box-shadow:4px 4px 4px  
4px rgb(197, 161, 161); -webkit-box-  
shadow:4px 4px 4px 4px rgb(197, 161, 161);  
box-shadow:4px 4px 4px 4px rgb(197, 161,  
161) }
```

Background

The CSS property to change the background color of an element to HunterLab 63.1928, 8.6254, 7.4543 is called "background". The background property can be set on classes, ids or directly on the HTML element.

```
.background, #background, body{  
background: rgb(197, 161, 161) }
```

If only the background color should be changed can be used:

```
.background{ background-color: rgb(197,  
161, 161) }
```

This example shows the color as background, it is applied via the CSS property "background".

To optimize and compress your CSS code, you can use our [online CSS compressor and optimizer](#) based on csstidy. If you want to create a linear or radial gradient as background or border, check our [CSS Gradient Generator](#).

Hey! You found this booklet interesting? Support Converting Colors with the new Membership Option!

The pro membership hides all ads, plus gives you double the colors in the color bucket, and more awesome pro features!

[Learn more, Memberships starting at \\$2.50/m!](#)

**Follow me
on Twitter!**

@ConvertingColor