

Converting Colors

HunterLab(62.9955, 10.8609,
6.8359)

Have a look what the booklet for
HunterLab(62.9955, 10.8609,
6.8359) contains.

HunterLab(62.9955, 10.8609, 6.8359)	3
<i>Conversions</i>	4
<i>Details</i>	6
<i>Harmonies</i>	12
<i>Previews</i>	24
<i>Color Blindness Simulation</i>	28
<i>CSS Examples</i>	31

Color

**HunterLab(62.9955, 10.8609,
6.8359)**

Conversions

Conversions Part 1

Format	Color
Hex	C89FA2
RGB	200, 159, 162
RGB Percent	78%, 62%, 64%
CMY	0.2157, 0.3765, 0.3647
CMYK	0.00, 0.20, 0.19, 0.22
HSL	356°, 27%, 70%
HSV	356°, 20%, 78%
XYZ	42.7392, 39.6843, 39.5897
YIQ	171.6010, 23.4730, 9.6250

Conversions

Conversions Part 2

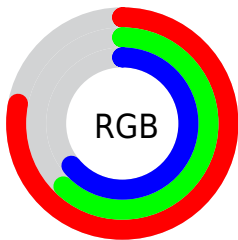
Format	Color
R _Y B	200, 159, 162
Decimal	13148066
CIE Lab	69.25, 15.63, 4.23
CIE LCh	69, 16.187, 15.133
Yxy	39.6861, 0.3503, 0.3253
Android (android.graphics.Color)	4291338146 (0xFFC89FA2)
YUV	171.6010, -4.7333, 24.9059
Hunter-Lab	62.9955, 10.8609, 6.8359

Details

The HunterLab color $62.9955, 10.8609, 6.8359$ is a light color, and the websafe version is hex $CC9999$. A complement of this color would be $72.6028, -16.3400, 1.3119$, and the grayscale version is $64.0776, -3.4190, 3.4815$.

A 20% lighter version of the original color is $86.2339, 10.1555, 8.1802$, and $42.0249, 10.3409, 5.2642$ is the 20% darker color. If you saturate the color by 10%, you get $57.2218, 18.5440, 8.4678$, and if you desaturate by 10%, it is $69.1658, 3.4402, 5.4177$.

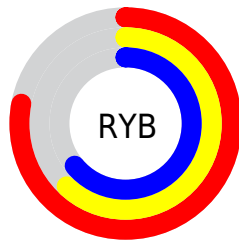
Distribution



Red (78%)

Green (62%)

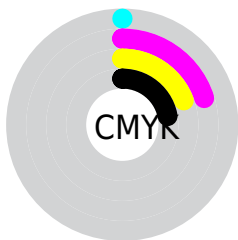
Blue (64%)



Red (78%)

Yellow (62%)

Blue (64%)

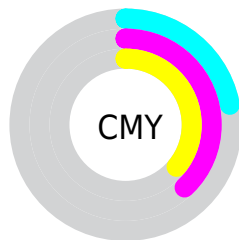


Cyan (0%)

Magenta (20%)

Yellow (19%)

Black (22%)



Cyan (22%)

Magenta (38%)

Yellow (36%)

Brightness & Saturation Gradients

These gradients show how the HunterLab color 62.9955, 10.8609, 6.8359 changes by changing the brightness by 10 percent. The first figure shows a shift by +10% for each color and the second figure -10%.

Similar to the brightness gradients but the following saturation gradients show a change of the HunterLab color 62.9955, 10.8609, 6.8359 by changing the saturation by 10% instead.

62.9955, 10.8609,
6.8359

62.9955, 10.8609,
6.8359

185.6876, 10.0398,
15.0669

52.2436, 10.6474,
6.0332

86.4207, 11.0628,
8.5116

42.1830, 10.3511,
5.2511

99.0258, 11.0690,
9.3827

32.8668, 9.9575,
4.4895

112.1904, 11.0185,
10.2760

24.3598, 9.4500,
3.7456

125.8916, 10.9153,
11.1914

16.7481, 8.8058,
3.0140

140.1092, 10.7630,
12.1284

10.1528, 7.9946,
2.3241

154.8250, 10.5647,

0.0000, INF, NaN

13.0869

0.0000, NaN, NaN

170.0228, 10.3228,
14.0665

0.0000, NaN, NaN

■ 62.9955, 10.8609,
6.8359

■ 62.9955, 10.8609,
6.8359

■ 57.2218, 18.5440,
8.4678

■ 69.1658, 3.4402,
5.4177

■ 51.9163, 26.4376,
10.3246

■ 75.6676, -3.7062,
4.1860

■ 47.1728, 34.3854,
12.3988

■ 82.4543, -10.6008,
3.1161

■ 43.0978, 42.0847,
14.6376

■ 89.4878, -17.2740,
2.1837

■ 39.8012, 49.0493,
16.9218

■ 95.3938, -21.7717,
-0.2405

■ 37.3735, 54.6571,
19.0595

■ 95.4041, -21.7131,
-0.3876

■ 35.8482, 58.3454,
20.8233

■ 35.0897, 60.1873,
21.9361

Harmonies

Analogous

The Analogous color harmony consists of three colors that are next to each other on the color wheel.



62.9969, 10.8771, -0.1169



62.9955, 10.8609, 6.8359



62.9969, 6.9130, 12.2284

Triad

The Triadic color harmony groups three colors that are evenly spaced from another and form a triangle on the color wheel.



62.9969, 10.8587, 6.8370



62.9969, -13.0665, 12.1910



62.9969, -6.9482, -10.9895

Complementary

The Complementary color scheme is a pair of colors which are on the opposite of each other on the color wheel.



62.9955, 10.8609, 6.8359



72.6028, -16.3400, 1.3119

Split Complementary

Split-complementary colors differ from the complementary color scheme. The scheme consists of three colors, the original color and two neighbors of the complement color.



62.9969, -13.0231, -6.8569



62.9955, 10.8609, 6.8359



62.9969, -16.4440, 6.7803

Square

The Square scheme is like the rectangle color scheme, but the four colors are evenly spaced on the color wheel.



62.9969, 10.8587, 6.8370



62.9969, -7.0099, 15.0699



62.9969, -16.4285, -0.1805



62.9969, 0.3653, -10.9697

Rectangle

The Rectangle color scheme consists of four colors that form a rectangle on the color wheel.



62.9955, 10.8609, 6.8359



62.9969, 2.6859, 14.4426



62.9969, -16.4285, -0.1805



62.9969, -9.1953, -10.0207

Sweetspot

The Sweet Spot groups the original color and five complimentary colors.



62.9969, 10.8587, 6.8370



94.7331, 0.3351, 6.3853



63.8611, 16.0968, -11.0999



43.5667, 0.4442, 3.0044

0.0000, NaN, NaN



46.2646, -2.4686, 2.5136

Same Dimension

The Same Dimension uses a secret algorithm to generate beautiful new colors.



62.9969, 10.8587, 6.8370



79.1278, 19.1620, 10.0027



67.7255, 1.7191, 13.0448



32.6333, 1.2269, 2.4616



27.9893, 48.0268, 17.3558



6.1271, 10.5861, 3.2358

Inverse Universe

The Inverse Universe completely reimagines the original color for something new.



62.9969, 10.8587, 6.8370



79.1278, 19.1620, 10.0027



67.3611, -7.5369, -6.7209



32.6333, 1.2269, 2.4616



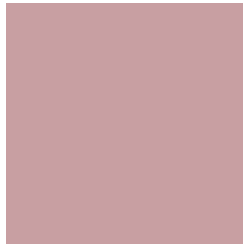
27.9893, 48.0268, 17.3558



6.1271, 10.5861, 3.2358

Previews

White Background



This preview shows how the HunterLab color 62.9955, 10.8609, 6.8359 looks on a white background.

Color Contrast Check

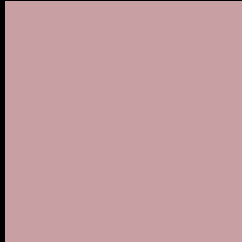
Large Text (above 18pt) WCAG AA × Fail

Any Text WCAG AA × Fail

Large Text (above 18pt) WCAG AAA × Fail

Any Text WCAG AAA × Fail

Black Background



This preview shows how the HunterLab color 62.9955, 10.8609, 6.8359 looks on a black background.

Color Contrast Check

Large Text (above 18pt) WCAG AA ✓ Pass

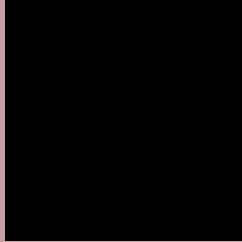
Any Text WCAG AA ✓ Pass

Large Text (above 18pt) WCAG AAA ✓ Pass

Any Text WCAG AAA ✓ Pass

If you want to check with other color combinations, try the [Color Contrast Checker](#).

HunterLab 62.9955, 10.8609, 6.8359 Background



This preview shows how black text looks on a background with the HunterLab color 62.9955, 10.8609, 6.8359.



This preview shows how white text looks on a background with the HunterLab color 62.9955, 10.8609,

Color Blindness Simulation

Color vision deficiency is a very complex topic, and I could not describe the different causes any better than Wikipedia does, so if you want to learn more, you should check out their [article about color blindness](#).

Dichromacy



Original Color

62.9955, 10.8609, 6.8359

Protanopia

62.9917, -1.9559, 4.3701

Deuteranopia

63.2004, 4.3354, 7.3878



Tritanopia

63.0662, 12.9526, 3.3348

Trichromacy



Original Color

62.9955, 10.8609, 6.8359

Protanomaly

63.0033, 2.4344, 5.3657

Deuteranomaly

63.0487, 6.7205, 7.2598

Tritanomaly

62.9772, 12.4874, 4.6061

Monochromacy



Original Color

62.9955, 10.8609, 6.8359

Achromatopsia

64.2295, -3.4271, 3.4897

Achromatomaly

63.5686, 1.5744, 4.6459

CSS Examples

Text

The CSS property to change the color of the text to HunterLab 62.9955, 10.8609, 6.8359 is called "color". The color property can be set on classes, ids or directly on the HTML element.

This example shows how text in the color `rgb(200, 159, 162)` looks like.

```
.text, #text, p{  
    color:rgb(200, 159, 162)  
}
```

If you want to add a text shadow in that color use the text-shadow property, you can generate a text shadow directly with our [CSS Text Shadow Generator](#).

Here you see how black text with a 4 pixel rgb(200, 159, 162) colored shadow looks like.

```
.shadow{ text-shadow: 4px 4px 2px rgb(200, 159, 162) }
```

Border

The CSS property to change the border of an element to HunterLab 62.9955, 10.8609, 6.8359 is called "border". The border property can be set on classes, ids or directly on the HTML element.

This example shows the color as border, it can be applied via the CSS property "border" or "border-color".

```
.border, #border, table{ border:4px solid rgb(200, 159, 162) }
```


If only the border color should be changed use the property `border-color`.

```
.border{ border-color:rgb(200, 159, 162) }
```

If you want to add a box shadow in that color use:

Here you see how a box with a 4 pixel `rgb(200, 159, 162)` colored shadow looks like.

```
.boxshadow{ -moz-box-shadow:4px 4px 4px  
4px rgb(200, 159, 162); -webkit-box-  
shadow:4px 4px 4px 4px rgb(200, 159, 162);  
box-shadow:4px 4px 4px 4px rgb(200, 159,  
162) }
```

Background

The CSS property to change the background color of an element to HunterLab 62.9955, 10.8609, 6.8359 is called "background". The background property can be set on classes, ids or directly on the HTML element.

```
.background, #background, body{  
background: rgb(200, 159, 162) }
```

If only the background color should be changed can be used:

```
.background{ background-color: rgb(200,  
159, 162) }
```

This example shows the color as background, it is applied via the CSS property "background".

To optimize and compress your CSS code, you can use our [online CSS compressor and optimizer](#) based on csstidy. If you want to create a linear or radial gradient as background or border, check our [CSS Gradient Generator](#).

Hey! You found this booklet interesting? Support Converting Colors with the new Membership Option!

The pro membership hides all ads, plus gives you double the colors in the color bucket, and more awesome pro features!

[Learn more, Memberships starting at \\$2.50/m!](#)

**Follow me
on Twitter!**

@ConvertingColor