

Converting Colors

HunterLab(63.0056, 13.9639,
15.3550)

Have a look what the booklet for
HunterLab(63.0056, 13.9639,
15.3550) contains.

HunterLab(63.0056, 13.9639, 15.3550)	3
<i>Conversions</i>	4
<i>Details</i>	6
<i>Harmonies</i>	12
<i>Previews</i>	24
<i>Color Blindness Simulation</i>	28
<i>CSS Examples</i>	31

Color

**HunterLab(63.0056, 13.9639,
15.3550)**

Conversions

Conversions Part 1

Format	Color
Hex	D49C8D
RGB	212, 156, 141
RGB Percent	83%, 61%, 55%
CMY	0.1686, 0.3882, 0.4471
CMYK	0.00, 0.26, 0.33, 0.17
HSL	13°, 45%, 69%
HSV	13°, 33%, 83%
XYZ	43.8476, 39.6971, 30.5506
YIQ	171.0340, 38.1910, 7.2070

Conversions

Conversions Part 2

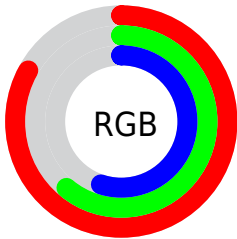
Format	Color
R _{YB}	212, 160, 141
Decimal	13933709
CIE Lab	69.25, 18.87, 16.06
CIE LCh	69, 24.776, 40.396
Yxy	39.6989, 0.3843, 0.3479
Android (android.graphics.Color)	4292123789 (0xFFD49C8D)
YUV	171.0340, -14.8068, 35.9272
Hunter-Lab	63.0056, 13.9639, 15.3550

Details

The HunterLab color **63.0056, 13.9639, 15.3550** is a light color, and the websafe version is hex **CC9999**. A complement of this color would be **70.9556, -16.4173, -8.6119**, and the grayscale version is **63.8789, -3.4084, 3.4707**.

A 20% lighter version of the original color is **84.7282, 8.4344, 16.2280**, and **42.0997, 13.4516, 12.2382** is the 20% darker color. If you saturate the color by 10%, you get **58.2206, 20.1487, 18.1967**, and if you desaturate by 10%, it is **68.1137, 8.1156, 12.2774**.

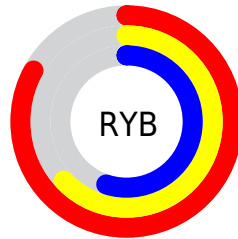
Distribution



Red (83%)

Green (61%)

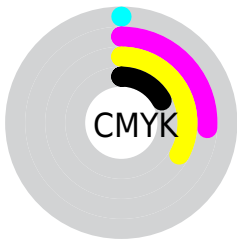
Blue (55%)



Red (83%)

Yellow (63%)

Blue (55%)

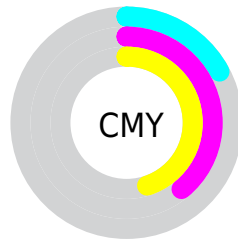


Cyan (0%)

Magenta (26%)

Yellow (33%)

Black (17%)



Cyan (17%)

Magenta (39%)

Yellow (45%)

Brightness & Saturation Gradients

These gradients show how the HunterLab color 63.0056, 13.9639, 15.3550 changes by changing the brightness by 10 percent. The first figure shows a shift by +10% for each color and the second figure -10%.

Similar to the brightness gradients but the following saturation gradients show a change of the HunterLab color 63.0056, 13.9639, 15.3550 by changing the saturation by 10% instead.

63.0056, 13.9639,
15.3550

63.0056, 13.9639,
15.3550

185.7022, 14.2852,
28.2218

52.2531, 13.5972,
13.8817

86.4320, 14.4515,
18.2435

42.1919, 13.1407,
12.3731

99.0376, 14.5925,
19.6705

32.8750, 12.5786,
10.8133

112.2027, 14.6719,
21.0925

24.3673, 11.8935,
9.1764

125.9044, 14.6944,
22.5129

16.7547, 11.0633,
7.4187

140.1224, 14.6638,
23.9342

10.1583, 10.0629,
7.1108

154.8387, 14.5835,

0.0000, INF, NaN

25.3584

0.0000, NaN, NaN

170.0369, 14.4564,
26.7872

0.0000, NaN, NaN

■ 63.0056, 13.9639,
15.3550

■ 63.0056, 13.9639,
15.3550

■ 58.2206, 20.1487,
18.1967

■ 68.1137, 8.1156,
12.2774

■ 53.8040, 26.6490,
20.7222

■ 73.4981, 2.6072,
9.0185

■ 49.8146, 33.3783,
22.8345

■ 79.1250, -2.5859,
5.6211

■ 46.3145, 40.1723,
24.4194

■ 84.9652, -7.4935,
2.1149

■ 43.3657, 46.7653,
25.3663

■ 90.9946, -12.1479,
-1.4789

■ 41.0199, 52.7930,
25.6101

■ 96.3001, -18.4566,
0.7685

■ 39.8231, 56.1835,
25.5224

Harmonies

Analogous

The Analogous color harmony consists of three colors that are next to each other on the color wheel.



63.0071, 19.3427, 7.0293



63.0056, 13.9639, 15.3550



63.0071, 4.0545, 19.8916

Triad

The Triadic color harmony groups three colors that are evenly spaced from another and form a triangle on the color wheel.



63.0071, 13.9613, 15.3560



63.0071, -22.4671, 9.9477



63.0071, 0.5839, -20.3399

Complementary

The Complementary color scheme is a pair of colors which are on the opposite of each other on the color wheel.



63.0056, 13.9639, 15.3550



70.9556, -16.4173, -8.6119

Split Complementary

Split-complementary colors differ from the complementary color scheme. The scheme consists of three colors, the original color and two neighbors of the complement color.



63.0071, -10.4568, -19.1853



63.0056, 13.9639, 15.3550



63.0071, -23.2527, -0.3958

Square

The Square scheme is like the rectangle color scheme, but the four colors are evenly spaced on the color wheel.



63.0071, 13.9613, 15.3560



63.0071, -16.7741, 17.1691



63.0071, -19.0008, -11.4087



63.0071, 11.2680, -14.3314

Rectangle

The Rectangle color scheme consists of four colors that form a rectangle on the color wheel.



63.0056, 13.9639, 15.3550



63.0071, -3.5146, 20.7252



63.0071, -19.0008, -11.4087



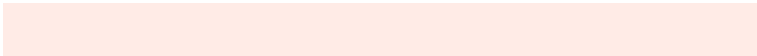
63.0071, -3.2158, -20.7991

Sweetspot

The Sweet Spot groups the original color and five complimentary colors.



63.0071, 13.9613, 15.3560



92.8968, 1.0054, 9.7147



60.9222, 30.6447, -13.8008



42.5269, 0.8913, 4.7673

0.0000, NaN, NaN



46.2646, -2.4686, 2.5136

Same Dimension

The Same Dimension uses a secret algorithm to generate beautiful new colors.



63.0071, 13.9613, 15.3560



73.5168, 22.4494, 21.3887



72.8363, -3.6424, 24.3046



35.8356, 0.2180, 3.6201



31.4790, 43.5551, 20.1597



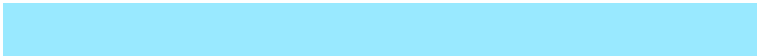
8.4856, 8.5087, 5.3778

Inverse Universe

The Inverse Universe completely reimagines the original color for something new.



70.9556, -16.4173, -8.6119



85.1599, -22.3195, -13.7834



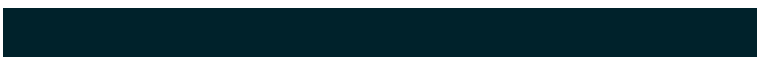
60.3018, 0.5674, -24.0747



36.9345, -3.9388, 0.3163



44.9346, -15.2168, -23.3157



11.5407, -4.4209, -4.8814

Previews

White Background



This preview shows how the HunterLab color 63.0056, 13.9639, 15.3550 looks on a white background.

Color Contrast Check

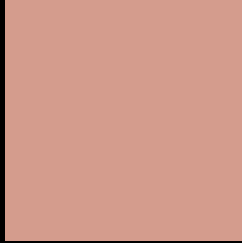
Large Text (above 18pt) WCAG AA × Fail

Any Text WCAG AA × Fail

Large Text (above 18pt) WCAG AAA × Fail

Any Text WCAG AAA × Fail

Black Background



This preview shows how the HunterLab color 63.0056, 13.9639, 15.3550 looks on a black background.

Color Contrast Check

Large Text (above 18pt) WCAG AA ✓ Pass

Any Text WCAG AA ✓ Pass

Large Text (above 18pt) WCAG AAA ✓ Pass

Any Text WCAG AAA ✓ Pass

If you want to check with other color combinations, try the [Color Contrast Checker](#).

HunterLab 63.0056, 13.9639, 15.3550 Background



This preview shows how black text looks on a background with the HunterLab color 63.0056, 13.9639, 15.3550.



This preview shows how white text looks on a background with the HunterLab color 63.0056, 13.9639, 15.3550.

Color Blindness Simulation

Color vision deficiency is a very complex topic, and I could not describe the different causes any better than Wikipedia does, so if you want to learn more, you should check out their [article about color blindness](#).

Dichromacy



Original Color

63.0056, 13.9639, 15.3550

Protanopia

63.1107, -4.1372, 12.8835

Deuteranopia

63.1059, 4.3928, 15.6518



Tritanopia

63.0547, 19.3753, 6.1682

Trichromacy



Original Color

63.0056, 13.9639, 15.3550

Protanomaly

62.8827, 2.4254, 13.5330

Deuteranomaly

62.9219, 8.0744, 15.5347

Tritanomaly

62.9743, 17.3383, 9.4956

Monochromacy



Original Color

63.0056, 13.9639, 15.3550

Achromatopsia

63.8154, -3.4050, 3.4672

Achromatomaly

63.4426, 2.1684, 8.0501

CSS Examples

Text

The CSS property to change the color of the text to HunterLab 63.0056, 13.9639, 15.3550 is called "color". The color property can be set on classes, ids or directly on the HTML element.

This example shows how text in the color `rgb(212, 156, 141)` looks like.

```
.text, #text, p{  
    color:rgb(212, 156, 141)  
}
```

If you want to add a text shadow in that color use the text-shadow property, you can generate a text shadow directly with our [CSS Text Shadow Generator](#).

Here you see how black text with a 4 pixel rgb(212, 156, 141) colored shadow looks like.

```
.shadow{ text-shadow: 4px 4px 2px rgb(212, 156, 141) }
```

Border

The CSS property to change the border of an element to HunterLab 63.0056, 13.9639, 15.3550 is called "border". The border property can be set on classes, ids or directly on the HTML element.

This example shows the color as border, it can be applied via the CSS property "border" or "border-color".

```
.border, #border, table{ border:4px solid rgb(212, 156, 141) }
```


If only the border color should be changed use the property `border-color`.

```
.border{ border-color:rgb(212, 156, 141) }
```

If you want to add a box shadow in that color use:

Here you see how a box with a 4 pixel `rgb(212, 156, 141)` colored shadow looks like.

```
.boxshadow{ -moz-box-shadow:4px 4px 4px  
4px rgb(212, 156, 141); -webkit-box-  
shadow:4px 4px 4px 4px rgb(212, 156, 141);  
box-shadow:4px 4px 4px 4px rgb(212, 156,  
141) }
```

Background

The CSS property to change the background color of an element to HunterLab 63.0056, 13.9639, 15.3550 is called "background". The background property can be set on classes, ids or directly on the HTML element.

```
.background, #background, body{  
background: rgb(212, 156, 141) }
```

If only the background color should be changed can be used:

```
.background{ background-color: rgb(212,  
156, 141) }
```

This example shows the color as background, it is applied via the CSS property "background".

To optimize and compress your CSS code, you can use our [online CSS compressor and optimizer](#) based on csstidy. If you want to create a linear or radial gradient as background or border, check our [CSS Gradient Generator](#).

Hey! You found this booklet interesting? Support Converting Colors with the new Membership Option!

The pro membership hides all ads, plus gives you double the colors in the color bucket, and more awesome pro features!

[Learn more, Memberships starting at \\$2.50/m!](#)

**Follow me
on Twitter!**

@ConvertingColor