

Converting Colors

HunterLab(63.0089, 13.2053,
10.3397)

Have a look what the booklet for
HunterLab(63.0089, 13.2053,
10.3397) contains.

HunterLab(63.0178, 13.2791, 10.3004)	3
<i>Conversions</i>	4
<i>Details</i>	6
<i>Harmonies</i>	12
<i>Previews</i>	24
<i>Color Blindness Simulation</i>	28
<i>CSS Examples</i>	31

Color

**HunterLab(63.0178, 13.2791,
10.3004)**

Conversions

Conversions Part 1

Format	Color
Hex	CF9D9A
RGB	207, 157, 154
RGB Percent	81%, 62%, 60%
CMY	0.1882, 0.3843, 0.3961
CMYK	0.00, 0.24, 0.26, 0.19
HSL	3°, 36%, 71%
HSV	3°, 26%, 81%
XYZ	43.6218, 39.7124, 35.9380
YIQ	171.6080, 30.7630, 9.6670

Conversions

Conversions Part 2

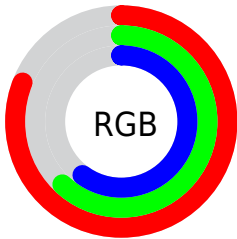
Format	Color
R _Y B	207, 157, 154
Decimal	13606298
CIE Lab	69.27, 18.16, 8.79
CIE LCh	69, 20.174, 25.836
Yxy	39.7143, 0.3657, 0.3330
Android (android.graphics.Color)	4291796378 (0xFFCF9D9A)
YUV	171.6080, -8.6807, 31.0388
Hunter-Lab	63.0178, 13.2791, 10.3004

Details

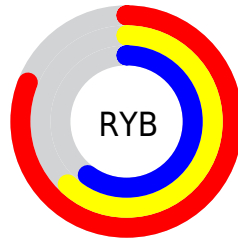
The HunterLab color **63.0178, 13.2791, 10.3004** is a light color, and the websafe version is hex **CC9999**. A complement of this color would be **73.8641, -17.6609, -2.1786**, and the grayscale version is **64.0941, -3.4199, 3.4824**.

A 20% lighter version of the original color is **85.3821, 9.8197, 11.3455**, and **42.1400, 12.8729, 8.1376** is the 20% darker color. If you saturate the color by 10%, you get **57.4412, 20.6731, 12.7397**, and if you desaturate by 10%, it is **68.9989, 6.1973, 7.9069**.

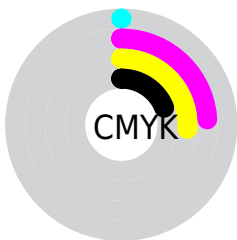
Distribution



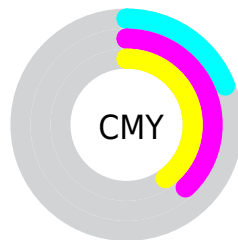
- Red (81%)
- Green (62%)
- Blue (60%)



- Red (81%)
- Yellow (62%)
- Blue (60%)



- Cyan (0%)
- Magenta (24%)
- Yellow (26%)
- Black (19%)



- Cyan (19%)
- Magenta (38%)
- Yellow (40%)

Brightness & Saturation Gradients

These gradients show how the HunterLab color 63.0178, 13.2791, 10.3004 changes by changing the brightness by 10 percent. The first figure shows a shift by +10% for each color and the second figure -10%.

Similar to the brightness gradients but the following saturation gradients show a change of the HunterLab color 63.0178, 13.2791, 10.3004 by changing the saturation by 10% instead.

63.0178, 13.2791,
10.3004

63.0178, 13.2791,
10.3004

185.7196, 13.3507,
20.2723

52.2646, 12.9459,
9.2484

86.4455, 13.7044,
12.4289

42.2026, 12.5243,
8.1971

99.0518, 13.8160,
13.5081

32.8848, 11.9988,
7.1407

112.2175, 13.8670,
14.5999

24.3761, 11.3521,
6.0684

125.9197, 13.8620,
15.7051

16.7625, 10.5619,
4.9605

140.1383, 13.8048,
16.8246

10.1650, 9.6015,
4.1861

154.8551, 13.6987,

0.0000, INF, NaN

17.9587

0.0000, NaN, NaN

170.0539, 13.5465,
19.1078

0.0000, NaN, NaN

■ 63.0178, 13.2791,
10.3004

■ 63.0178, 13.2791,
10.3004

■ 57.4412, 20.6731,
12.7397

■ 68.9989, 6.1973,
7.9069

■ 52.3395, 28.3273,
15.1830

■ 75.3194, -0.5607,
5.5722

■ 47.8033, 36.0849,
17.5578

■ 81.9317, -7.0198,
3.3008

■ 43.9321, 43.6491,
19.7440

■ 88.7970, -13.2138,
1.0897

■ 40.8244, 50.5551,
21.5756

■ 95.7994, -19.6548,
0.1345

■ 38.5556, 56.2217,
22.8736

■ 95.9195, -19.8361,
0.2787

■ 37.1443, 60.1246,
23.5236

■ 36.7722, 61.1807,
23.7299

Harmonies

Analogous

The Analogous color harmony consists of three colors that are next to each other on the color wheel.



63.0193, 15.1731, 2.2019



63.0178, 13.2791, 10.3004



63.0193, 6.8293, 15.7747

Triad

The Triadic color harmony groups three colors that are evenly spaced from another and form a triangle on the color wheel.



63.0193, 13.2767, 10.3014



63.0193, -17.2825, 12.1297



63.0193, -4.6394, -15.6648

Complementary

The Complementary color scheme is a pair of colors which are on the opposite of each other on the color wheel.



63.0178, 13.2791, 10.3004



73.8641, -17.6609, -2.1786

Split Complementary

Split-complementary colors differ from the complementary color scheme. The scheme consists of three colors, the original color and two neighbors of the complement color.



63.0193, -12.9516, -12.0612



63.0178, 13.2791, 10.3004



63.0193, -19.9823, 4.6345

Square

The Square scheme is like the rectangle color scheme, but the four colors are evenly spaced on the color wheel.



63.0193, 13.2767, 10.3014



63.0193, -10.8567, 16.7197



63.0193, -18.4427, -4.3138



63.0193, 4.4919, -13.5829

Rectangle

The Rectangle color scheme consists of four colors that form a rectangle on the color wheel.



63.0178, 13.2791, 10.3004



63.0193, 1.0006, 17.6049



63.0193, -18.4427, -4.3138



63.0193, -7.6167, -15.0658

Sweetspot

The Sweet Spot groups the original color and five complimentary colors.



63.0193, 13.2767, 10.3014



93.3197, 1.3864, 7.7836



63.8384, 23.1373, -13.5193



42.6053, 1.2392, 3.8083

0.0000, NaN, NaN



46.2646, -2.4686, 2.5136

Same Dimension

The Same Dimension uses a secret algorithm to generate beautiful new colors.



63.0193, 13.2767, 10.3014



75.6368, 22.1655, 14.8182



70.3759, -0.0684, 17.6077



34.5169, 0.9369, 3.0572



29.2658, 48.3000, 18.8790



7.1939, 10.5262, 4.6171

Inverse Universe

The Inverse Universe completely reimagines the original color for something new.



73.8641, -17.6609, -2.1786



92.2706, -25.4949, -4.3814



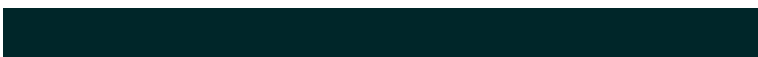
65.6937, -4.9737, -12.8844



36.4520, -4.5458, 0.8408



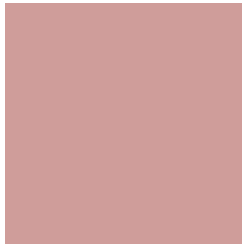
52.4903, -25.7061, -10.1163



12.5551, -6.2533, -2.1936

Previews

White Background



This preview shows how the HunterLab color 63.0178, 13.2791, 10.3004 looks on a white background.

Color Contrast Check

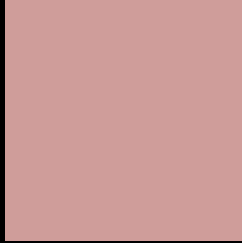
Large Text (above 18pt) WCAG AA × Fail

Any Text WCAG AA × Fail

Large Text (above 18pt) WCAG AAA × Fail

Any Text WCAG AAA × Fail

Black Background



This preview shows how the HunterLab color 63.0178, 13.2791, 10.3004 looks on a black background.

Color Contrast Check

Large Text (above 18pt) WCAG AA ✓ Pass

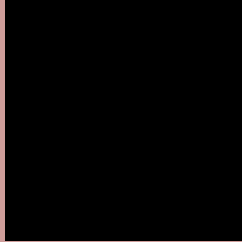
Any Text WCAG AA ✓ Pass

Large Text (above 18pt) WCAG AAA ✓ Pass

Any Text WCAG AAA ✓ Pass

If you want to check with other color combinations, try the [Color Contrast Checker](#).

HunterLab 63.0178, 13.2791, 10.3004 Background



This preview shows how black text looks on a background with the HunterLab color 63.0178, 13.2791, 10.3004.



This preview shows how white text looks on a background with the HunterLab color 63.0178, 13.2791,

Color Blindness Simulation

Color vision deficiency is a very complex topic, and I could not describe the different causes any better than Wikipedia does, so if you want to learn more, you should check out their [article about color blindness](#).

Dichromacy



Original Color

63.0178, 13.2791, 10.3004

Protanopia

63.2677, -2.9082, 7.7675

Deuteranopia

63.0085, 4.7108, 10.5496



Tritanopia

62.9624, 16.5665, 4.6603

Trichromacy



Original Color

63.0178, 13.2791, 10.3004

Protanomaly

63.2010, 2.7106, 8.6456

Deuteranomaly

62.9762, 7.4780, 10.5635

Tritanomaly

63.0836, 15.3004, 7.0129

Monochromacy



Original Color

63.0178, 13.2791, 10.3004

Achromatopsia

64.2295, -3.4271, 3.4897

Achromatomaly

63.7717, 2.0907, 6.2368

CSS Examples

Text

The CSS property to change the color of the text to HunterLab 63.0178, 13.2791, 10.3004 is called "color". The color property can be set on classes, ids or directly on the HTML element.

This example shows how text in the color `rgb(207, 157, 154)` looks like.

```
.text, #text, p{  
    color:rgb(207, 157, 154)  
}
```

If you want to add a text shadow in that color use the text-shadow property, you can generate a text shadow directly with our [CSS Text Shadow Generator](#).

Here you see how black text with a 4 pixel rgb(207, 157, 154) colored shadow looks like.

```
.shadow{ text-shadow: 4px 4px 2px rgb(207, 157, 154) }
```

Border

The CSS property to change the border of an element to HunterLab 63.0178, 13.2791, 10.3004 is called "border". The border property can be set on classes, ids or directly on the HTML element.

This example shows the color as border, it can be applied via the CSS property "border" or "border-color".

```
.border, #border, table{ border:4px solid rgb(207, 157, 154) }
```


If only the border color should be changed use the property `border-color`.

```
.border{ border-color:rgb(207, 157, 154) }
```

If you want to add a box shadow in that color use:

Here you see how a box with a 4 pixel `rgb(207, 157, 154)` colored shadow looks like.

```
.boxshadow{ -moz-box-shadow:4px 4px 4px  
4px rgb(207, 157, 154); -webkit-box-  
shadow:4px 4px 4px 4px rgb(207, 157, 154);  
box-shadow:4px 4px 4px 4px rgb(207, 157,  
154) }
```

Background

The CSS property to change the background color of an element to HunterLab 63.0178, 13.2791, 10.3004 is called "background". The background property can be set on classes, ids or directly on the HTML element.

```
.background, #background, body{  
background: rgb(207, 157, 154) }
```

If only the background color should be changed can be used:

```
.background{ background-color: rgb(207,  
157, 154) }
```

This example shows the color as background, it is applied via the CSS property "background".

To optimize and compress your CSS code, you can use our [online CSS compressor and optimizer](#) based on csstidy. If you want to create a linear or radial gradient as background or border, check our [CSS Gradient Generator](#).

Hey! You found this booklet interesting? Support Converting Colors with the new Membership Option!

The pro membership hides all ads, plus gives you double the colors in the color bucket, and more awesome pro features!

[Learn more, Memberships starting at \\$2.50/m!](#)

**Follow me
on Twitter!**

@ConvertingColor