

Converting Colors

HunterLab(63.0299, 2.7264,
17.1145)

Have a look what the booklet for
HunterLab(63.0299, 2.7264,
17.1145) contains.

HunterLab(63.0855, 2.6882, 17.0289)	3
<i>Conversions</i>	4
<i>Details</i>	6
<i>Harmonies</i>	12
<i>Previews</i>	24
<i>Color Blindness Simulation</i>	28
<i>CSS Examples</i>	31

Color

**HunterLab(63.0855, 2.6882,
17.0289)**

Conversions

Conversions Part 1

Format	Color
Hex	C2A488
RGB	194, 164, 136
RGB Percent	76%, 64%, 53%
CMY	0.2392, 0.3568, 0.4667
CMYK	0.00, 0.15, 0.30, 0.24
HSL	29°, 32%, 65%
HSV	29°, 30%, 76%
XYZ	39.9675, 39.7978, 28.8678
YIQ	169.7780, 26.8680, -2.3480

Conversions

Conversions Part 2

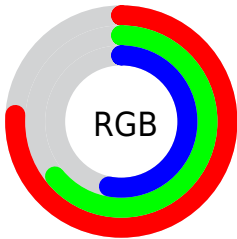
Format	Color
RYB	194, 190, 136
Decimal	12756104
CIELab	69.33, 6.81, 18.63
CIELCh	69, 19.835, 69.923
Yxy	39.7996, 0.3679, 0.3664
Android (android.graphics.Color)	4290946184 (0xFFC2A488)
YUV	169.7780, -16.6526, 21.2427
Hunter-Lab	63.0855, 2.6882, 17.0289

Details

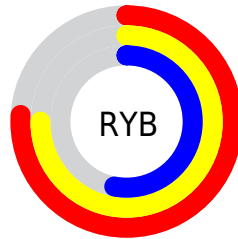
The HunterLab color $63.0855, 2.6882, 17.0289$ is a light color, and the websafe version is hex $CC9999$. A complement of this color would be $60.3329, -6.3908, -13.0918$, and the grayscale version is $63.3699, -3.3813, 3.4430$.

A 20% lighter version of the original color is $86.5138, 1.9016, 20.3484$, and $42.1298, 3.0513, 13.6234$ is the 20% darker color. If you saturate the color by 10%, you get $59.8717, 5.4954, 20.4442$, and if you desaturate by 10%, it is $66.4351, 0.1906, 13.1072$.

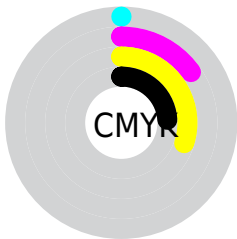
Distribution



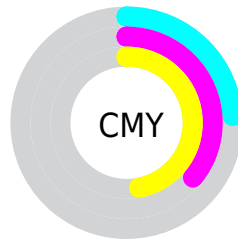
- Red (76%)
- Green (64%)
- Blue (53%)



- Red (76%)
- Yellow (75%)
- Blue (53%)



- Cyan (0%)
- Magenta (15%)
- Yellow (30%)
- Black (24%)



- Cyan (24%)
- Magenta (36%)
- Yellow (47%)

Brightness & Saturation Gradients

These gradients show how the HunterLab color 63.0855, 2.6882, 17.0289 changes by changing the brightness by 10 percent. The first figure shows a shift by +10% for each color and the second figure -10%.

Similar to the brightness gradients but the following saturation gradients show a change of the HunterLab color 63.0855, 2.6882, 17.0289 by changing the saturation by 10% instead.

■ 63.0855, 2.6882,
17.0289

■ 63.0855, 2.6882,
17.0289

185.8167, -1.3261,
30.9546

■ 52.3282, 2.9086,
15.4002

■ 86.5207, 2.0832,
20.1967

■ 42.2618, 3.0712,
13.7228

■ 99.1305, 1.7117,
21.7511

■ 32.9393, 3.1656,
11.9771

■ 112.2995, 1.2978,
23.2941

■ 24.4254, 3.1810,
10.1318

126.0050, 0.8443,
24.8297

■ 16.8060, 3.1011,
8.1357

140.2267, 0.3533,
26.3612

■ 10.2018, 2.9001,
7.1413

154.9465, -0.1732,

0.0000, INF, NaN

27.8912

0.0000, NaN, NaN

170.1481, -0.7335,
29.4218

0.0000, NaN, NaN

■ 63.0855, 2.6882,
17.0289

■ 63.0855, 2.6882,
17.0289

■ 59.8717, 5.4954,
20.4442

■ 66.4351, 0.1906,
13.1072

■ 56.8015, 8.6348,
23.2958

■ 69.9051, -2.0102,
8.7279

■ 53.8894, 12.1134,
25.5294

■ 73.4871, -3.9377,
3.9390

■ 51.1491, 15.9293,
27.0943

■ 77.1720, -5.6135,
-1.2174

■ 48.5945, 20.0648,
27.9529

■ 80.9519, -7.0584,
-6.7042

■ 46.2386, 24.4784,
28.0956

■ 84.8198, -8.2922,
-12.4888

■ 44.0850, 29.0638,
27.6660

■ 88.1306, -12.8786,
-9.5674

■ 44.0636, 29.1111,
27.6614

■ 91.4075, -17.9361,
-5.3549

■ 94.7447, -22.9268,
-1.2245

Harmonies

Analogous

The Analogous color harmony consists of three colors that are next to each other on the color wheel.



63.0870, 10.4682, 13.1176



63.0855, 2.6882, 17.0289



63.0870, -6.3261, 17.6013

Triad

The Triadic color harmony groups three colors that are evenly spaced from another and form a triangle on the color wheel.



63.0870, 2.6860, 17.0298



63.0870, -19.5377, 0.5288



63.0870, 8.1330, -10.5511

Complementary

The Complementary color scheme is a pair of colors which are on the opposite of each other on the color wheel.



63.0855, 2.6882, 17.0289



60.3329, -6.3908, -13.0918

Split Complementary

Split-complementary colors differ from the complementary color scheme. The scheme consists of three colors, the original color and two neighbors of the complement color.



63.0870, -0.3576, -15.0436



63.0855, 2.6882, 17.0289



63.0870, -16.1086, -8.0791

Square

The Square scheme is like the rectangle color scheme, but the four colors are evenly spaced on the color wheel.



63.0870, 2.6860, 17.0298



63.0870, -18.8245, 8.8314



63.0870, -9.2049, -14.0805



63.0870, 13.7332, -2.4869

Rectangle

The Rectangle color scheme consists of four colors that form a rectangle on the color wheel.



63.0855, 2.6882, 17.0289



63.0870, -11.7777, 16.1081



63.0870, -9.2049, -14.0805



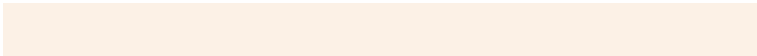
63.0870, 5.5034, -12.5770

Sweetspot

The Sweet Spot groups the original color and five complimentary colors.



63.0870, 2.6860, 17.0298



94.4513, -2.9137, 11.2806



56.4497, 21.4412, -3.2058



43.8701, -1.1710, 5.7080

0.0000, NaN, NaN



46.2646, -2.4686, 2.5136

Same Dimension

The Same Dimension uses a secret algorithm to generate beautiful new colors.



63.0870, 2.6860, 17.0298



82.0063, 6.0910, 26.0702



71.3972, -11.0493, 24.4581



32.9582, -0.9963, 3.9895



35.9557, 23.0676, 22.5596



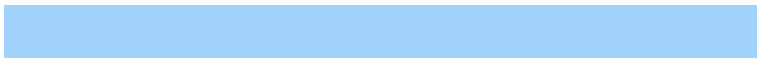
8.3461, 2.8762, 5.1932

Inverse Universe

The Inverse Universe completely reimagines the original color for something new.



60.3329, -6.3908, -13.0918



77.5133, -8.6475, -23.1184



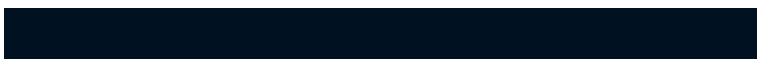
52.2375, 7.5782, -25.6085



32.5427, -2.3758, -0.5489



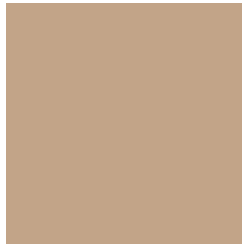
29.5976, 5.5088, -48.8863



7.1835, -0.6610, -7.5518

Previews

White Background



This preview shows how the HunterLab color 63.0855, 2.6882, 17.0289 looks on a white background.

Color Contrast Check

Large Text (above 18pt) WCAG AA × Fail

Any Text WCAG AA × Fail

Large Text (above 18pt) WCAG AAA × Fail

Any Text WCAG AAA × Fail

Black Background



This preview shows how the HunterLab color 63.0855, 2.6882, 17.0289 looks on a black background.

Color Contrast Check

Large Text (above 18pt) WCAG AA ✓ Pass

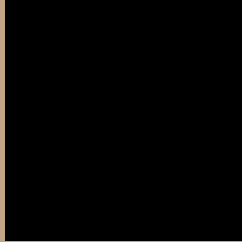
Any Text WCAG AA ✓ Pass

Large Text (above 18pt) WCAG AAA ✓ Pass

Any Text WCAG AAA ✓ Pass

If you want to check with other color combinations, try the [Color Contrast Checker](#).

HunterLab 63.0855, 2.6882, 17.0289 Background



This preview shows how black text looks on a background with the HunterLab color 63.0855, 2.6882, 17.0289.



This preview shows how white text looks on a background with the HunterLab color 63.0855, 2.6882,

Color Blindness Simulation

Color vision deficiency is a very complex topic, and I could not describe the different causes any better than Wikipedia does, so if you want to learn more, you should check out their [article about color blindness](#).

Dichromacy



Original Color

63.0855, 2.6882, 17.0289

Protanopia

63.0830, -4.6646, 16.1907

Deuteranopia

63.1207, 4.2589, 17.0903



Tritanopia

63.0415, 11.5367, 2.8125

Trichromacy



Original Color

63.0855, 2.6882, 17.0289

Protanomaly

62.9555, -2.1422, 16.4664

Deuteranomaly

63.0141, 3.9005, 16.9813

Tritanomaly

63.1100, 8.1872, 8.6416

Monochromacy



Original Color

63.0855, 2.6882, 17.0289

Achromatopsia

63.4017, -3.3830, 3.4447

Achromatomaly

63.2911, -1.4315, 8.6718

CSS Examples

Text

The CSS property to change the color of the text to HunterLab 63.0855, 2.6882, 17.0289 is called "color". The color property can be set on classes, ids or directly on the HTML element.

This example shows how text in the color `rgb(194, 164, 136)` looks like.

```
.text, #text, p{  
    color:rgb(194, 164, 136)  
}
```

If you want to add a text shadow in that color use the text-shadow property, you can generate a text shadow directly with our [CSS Text Shadow Generator](#).

Here you see how black text with a 4 pixel rgb(194, 164, 136) colored shadow looks like.

```
.shadow{ text-shadow: 4px 4px 2px rgb(194, 164, 136) }
```

Border

The CSS property to change the border of an element to HunterLab 63.0855, 2.6882, 17.0289 is called "border". The border property can be set on classes, ids or directly on the HTML element.

This example shows the color as border, it can be applied via the CSS property "border" or "border-color".

```
.border, #border, table{ border:4px solid rgb(194, 164, 136) }
```


If only the border color should be changed use the property `border-color`.

```
.border{ border-color:rgb(194, 164, 136) }
```

If you want to add a box shadow in that color use:

Here you see how a box with a 4 pixel `rgb(194, 164, 136)` colored shadow looks like.

```
.boxshadow{ -moz-box-shadow:4px 4px 4px  
4px rgb(194, 164, 136); -webkit-box-  
shadow:4px 4px 4px 4px rgb(194, 164, 136);  
box-shadow:4px 4px 4px 4px rgb(194, 164,  
136) }
```

Background

The CSS property to change the background color of an element to HunterLab 63.0855, 2.6882, 17.0289 is called "background". The background property can be set on classes, ids or directly on the HTML element.

```
.background, #background, body{  
background: rgb(194, 164, 136) }
```

If only the background color should be changed can be used:

```
.background{ background-color: rgb(194,  
164, 136) }
```

This example shows the color as background, it is applied via the CSS property "background".

To optimize and compress your CSS code, you can use our [online CSS compressor and optimizer](#) based on csstidy. If you want to create a linear or radial gradient as background or border, check our [CSS Gradient Generator](#).

Hey! You found this booklet interesting? Support Converting Colors with the new Membership Option!

The pro membership hides all ads, plus gives you double the colors in the color bucket, and more awesome pro features!

[Learn more, Memberships starting at \\$2.50/m!](#)

**Follow me
on Twitter!**

@ConvertingColor