

Converting Colors

HunterLab(63.0577, 5.6056,
10.5761)

Have a look what the booklet for
HunterLab(63.0577, 5.6056,
10.5761) contains.

HunterLab(63.2168, 5.4074, 10.7836)	3
<i>Conversions</i>	4
<i>Details</i>	6
<i>Harmonies</i>	12
<i>Previews</i>	24
<i>Color Blindness Simulation</i>	28
<i>CSS Examples</i>	31

Color

**HunterLab(63.2168, 5.4074,
10.7836)**

Conversions

Conversions Part 1

Format	Color
Hex	C2A399
RGB	194, 163, 153
RGB Percent	76%, 64%, 60%
CMY	0.2392, 0.3608, 0.4000
CMYK	0.00, 0.16, 0.21, 0.24
HSL	15°, 25%, 68%
HSV	15°, 21%, 76%
XYZ	41.0951, 39.9636, 35.6848
YIQ	171.1290, 21.6860, 3.4620

Conversions

Conversions Part 2

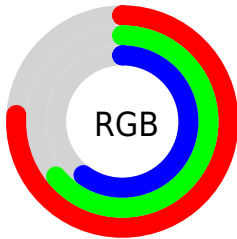
Format	Color
RYB	194, 166, 153
Decimal	12755865
CIELab	69.44, 9.79, 9.43
CIELCh	69, 13.590, 43.917
Yxy	39.9655, 0.3520, 0.3423
Android (android.graphics.Color)	4290945945 (0xFFC2A399)
YUV	171.1290, -8.9376, 20.0579
Hunter-Lab	63.2168, 5.4074, 10.7836

Details

The HunterLab color $63.2168, 5.4074, 10.7836$ is a light color, and the websafe version is hex $CC9999$. A complement of this color would be $67.0426, -10.7864, -4.0147$, and the grayscale version is $63.8995, -3.4095, 3.4718$.

A 20% lighter version of the original color is $86.6932, 5.0120, 13.1357$, and $42.3127, 5.6755, 8.5582$ is the 20% darker color. If you saturate the color by 10%, you get $58.7074, 10.2671, 13.7240$, and if you desaturate by 10%, it is $67.9511, 0.8410, 7.6544$.

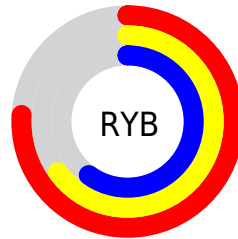
Distribution



Red (76%)

Green (64%)

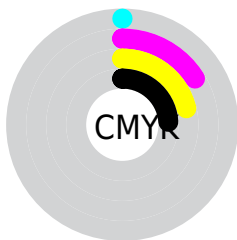
Blue (60%)



Red (76%)

Yellow (65%)

Blue (60%)

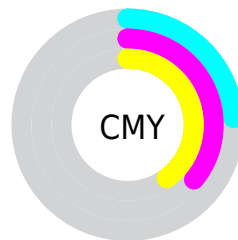


Cyan (0%)

Magenta (16%)

Yellow (21%)

Black (24%)



Cyan (24%)


Magenta (36%)

Yellow (40%)

Brightness & Saturation Gradients


These gradients show how the HunterLab color 63.2168, 5.4074, 10.7836 changes by changing the brightness by 10 percent. The first figure shows a shift by +10% for each color and the second figure -10%.

Similar to the brightness gradients but the following saturation gradients show a change of the HunterLab color 63.2168, 5.4074, 10.7836 by changing the saturation by 10% instead.

 63.2168, 5.4074,
10.7836


 63.2168, 5.4074,
10.7836


186.0048, 2.4798,
21.0042

 52.4515, 5.4793,
9.6958


 86.6665, 5.0780,
12.9768

 42.3767, 5.4843,
8.6060


 99.2831, 4.8352,
14.0858

 33.0450, 5.4105,
7.5075


112.4586, 4.5450,
15.2060

 24.5212, 5.2445,
6.3882

126.1703, 4.2106,
16.3383

 16.8906, 4.9668,
5.2268

140.3980, 3.8347,
17.4838

 10.2734, 4.5474,
4.4242

155.1236, 3.4196,

0.0000, INF, NaN

18.6430

0.0000, NaN, NaN

170.3308, 2.9674,
19.8163

0.0000, NaN, NaN

■ 63.2168, 5.4074,
10.7836

■ 63.2168, 5.4074,
10.7836

■ 58.7074, 10.2671,
13.7240

■ 67.9511, 0.8410,
7.6544

■ 54.4504, 15.4392,
16.4225

■ 72.8795, -3.4489,
4.3712

■ 50.4846, 20.9141,
18.8153

■ 77.9810, -7.4915,
0.9631

■ 46.8528, 26.6498,
20.8221

■ 83.2372, -11.3143,
-2.5486

■ 43.6029, 32.5510,
22.3502

■ 88.6324, -14.9438,
-6.1484

■ 40.7841, 38.4500,
23.3071

■ 93.6409, -21.2928,
-2.5738

■ 38.4420, 44.0960,
23.6291

■ 94.9786, -23.2710,
-0.9405

■ 36.7823, 48.5976,
23.5158

Harmonies

Analogous

The Analogous color harmony consists of three colors that are next to each other on the color wheel.



63.2182, 8.5655, 6.0979



63.2168, 5.4074, 10.7836



63.2182, -0.0538, 13.3600

Triad

The Triadic color harmony groups three colors that are evenly spaced from another and form a triangle on the color wheel.



63.2182, 5.4053, 10.7846



63.2182, -14.3851, 6.4906



63.2182, -0.4954, -8.5326

Complementary

The Complementary color scheme is a pair of colors which are on the opposite of each other on the color wheel.



63.2168, 5.4074, 10.7836



67.0426, -10.7864, -4.0147

Split Complementary

Split-complementary colors differ from the complementary color scheme. The scheme consists of three colors, the original color and two neighbors of the complement color.



63.2182, -6.6321, -8.4015



63.2168, 5.4074, 10.7836



63.2182, -14.4931, 0.6638

Square

The Square scheme is like the rectangle color scheme, but the four colors are evenly spaced on the color wheel.



63.2182, 5.4053, 10.7846



63.2182, -11.4029, 11.0483



63.2182, -11.7038, -4.9048



63.2182, 5.0713, -5.2472

Rectangle

The Rectangle color scheme consists of four colors that form a rectangle on the color wheel.



63.2168, 5.4074, 10.7836



63.2182, -4.1857, 13.7039



63.2182, -11.7038, -4.9048



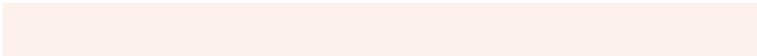
63.2182, -2.5633, -8.8957

Sweetspot

The Sweet Spot groups the original color and five complimentary colors.



63.2182, 5.4053, 10.7846



94.7743, -1.8213, 8.0994



61.4257, 15.5342, -5.8791



44.1440, -0.6718, 3.9280

0.0000, NaN, NaN



46.2646, -2.4686, 2.5136

Same Dimension

The Same Dimension uses a secret algorithm to generate beautiful new colors.



63.2182, 5.4053, 10.7846



82.4652, 10.0148, 16.2376



69.0392, -4.6125, 16.5792



32.3546, 0.0301, 3.3313



30.0080, 38.8507, 19.1710



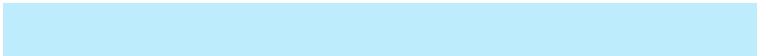
7.0810, 5.7535, 4.4640

Inverse Universe

The Inverse Universe completely reimagines the original color for something new.



67.0426, -10.7864, -4.0147



88.6096, -16.0472, -7.5530



60.9876, -0.9574, -12.0550



33.1641, -3.3870, 0.2015



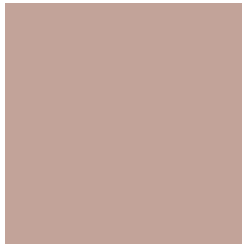
40.4299, -12.0558, -24.5088



8.9919, -3.3176, -4.0774

Previews

White Background



This preview shows how the HunterLab color 63.2168, 5.4074, 10.7836 looks on a white background.

Color Contrast Check

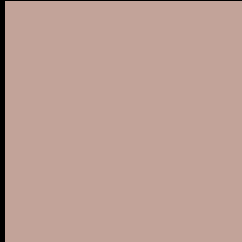
Large Text (above 18pt) WCAG AA × Fail

Any Text WCAG AA × Fail

Large Text (above 18pt) WCAG AAA × Fail

Any Text WCAG AAA × Fail

Black Background



This preview shows how the HunterLab color 63.2168, 5.4074, 10.7836 looks on a black background.

Color Contrast Check

Large Text (above 18pt) WCAG AA ✓ Pass

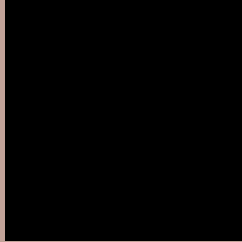
Any Text WCAG AA ✓ Pass

Large Text (above 18pt) WCAG AAA ✓ Pass

Any Text WCAG AAA ✓ Pass

If you want to check with other color combinations, try the [Color Contrast Checker](#).

HunterLab 63.2168, 5.4074, 10.7836 Background



This preview shows how black text looks on a background with the HunterLab color 63.2168, 5.4074, 10.7836.



This preview shows how white text looks on a background with the HunterLab color 63.2168, 5.4074,

Color Blindness Simulation

Color vision deficiency is a very complex topic, and I could not describe the different causes any better than Wikipedia does, so if you want to learn more, you should check out their [article about color blindness](#).

Dichromacy



Original Color

63.2168, 5.4074, 10.7836

Protanopia

63.2506, -3.1853, 9.4359

Deuteranopia

63.2908, 4.2068, 10.8412



Tritanopia

63.1621, 10.6439, 1.9950

Trichromacy



Original Color

63.2168, 5.4074, 10.7836

Protanomaly

63.3019, -0.0621, 9.9602

Deuteranomaly

63.3942, 4.5538, 10.9571

Tritanomaly

63.1229, 8.6807, 5.1622

Monochromacy



Original Color

63.2168, 5.4074, 10.7836

Achromatopsia

63.8154, -3.4050, 3.4672

Achromatomaly

63.4581, -0.5227, 6.2784

CSS Examples

Text

The CSS property to change the color of the text to HunterLab 63.2168, 5.4074, 10.7836 is called "color". The color property can be set on classes, ids or directly on the HTML element.

This example shows how text in the color `rgb(194, 163, 153)` looks like.

```
.text, #text, p{  
    color:rgb(194, 163, 153)  
}
```

If you want to add a text shadow in that color use the text-shadow property, you can generate a text shadow directly with our [CSS Text Shadow Generator](#).

Here you see how black text with a 4 pixel rgb(194, 163, 153) colored shadow looks like.

```
.shadow{ text-shadow: 4px 4px 2px rgb(194, 163, 153) }
```

Border

The CSS property to change the border of an element to HunterLab 63.2168, 5.4074, 10.7836 is called "border". The border property can be set on classes, ids or directly on the HTML element.

This example shows the color as border, it can be applied via the CSS property "border" or "border-color".

```
.border, #border, table{ border:4px solid rgb(194, 163, 153) }
```


If only the border color should be changed use the property `border-color`.

```
.border{ border-color:rgb(194, 163, 153) }
```

If you want to add a box shadow in that color use:

Here you see how a box with a 4 pixel `rgb(194, 163, 153)` colored shadow looks like.

```
.boxshadow{ -moz-box-shadow:4px 4px 4px  
4px rgb(194, 163, 153); -webkit-box-  
shadow:4px 4px 4px 4px rgb(194, 163, 153);  
box-shadow:4px 4px 4px 4px rgb(194, 163,  
153) }
```

Background

The CSS property to change the background color of an element to HunterLab 63.2168, 5.4074, 10.7836 is called "background". The background property can be set on classes, ids or directly on the HTML element.

```
.background, #background, body{  
background: rgb(194, 163, 153) }
```

If only the background color should be changed can be used:

```
.background{ background-color: rgb(194,  
163, 153) }
```

This example shows the color as background, it is applied via the CSS property "background".

To optimize and compress your CSS code, you can use our [online CSS compressor and optimizer](#) based on csstidy. If you want to create a linear or radial gradient as background or border, check our [CSS Gradient Generator](#).

Hey! You found this booklet interesting? Support Converting Colors with the new Membership Option!

The pro membership hides all ads, plus gives you double the colors in the color bucket, and more awesome pro features!

[Learn more, Memberships starting at \\$2.50/m!](#)

**Follow me
on Twitter!**

@ConvertingColor