

Converting Colors

HunterLab(63.0779, 10.1451,
16.3049)

Have a look what the booklet for
HunterLab(63.0779, 10.1451,
16.3049) contains.

HunterLab(63.1638, 10.1830, 16.5294)	3
<i>Conversions</i>	4
<i>Details</i>	6
<i>Harmonies</i>	12
<i>Previews</i>	24
<i>Color Blindness Simulation</i>	28
<i>CSS Examples</i>	31

Color

**HunterLab(63.1638, 10.1830,
16.5294)**

Conversions

Conversions Part 1

Format	Color
Hex	CF9F8A
RGB	207, 159, 138
RGB Percent	81%, 62%, 54%
CMY	0.1882, 0.3764, 0.4588
CMYK	0.00, 0.23, 0.33, 0.19
HSL	18°, 42%, 68%
HSV	18°, 33%, 81%
XYZ	42.7177, 39.8967, 29.4941
YIQ	170.9580, 35.3490, 3.6450

Conversions

Conversions Part 2

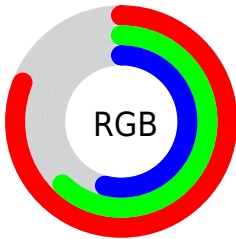
Format	Color
R _Y B	207, 168, 138
Decimal	13606794
CIE Lab	69.40, 14.91, 17.83
CIE LCh	69, 23.240, 50.101
Yxy	39.8985, 0.3810, 0.3559
Android (android.graphics.Color)	4291796874 (0xFFCF9F8A)
YUV	170.9580, -16.2483, 31.6088
Hunter-Lab	63.1638, 10.1830, 16.5294

Details

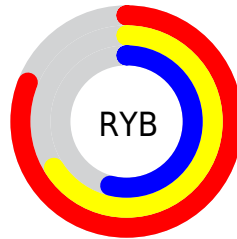
The HunterLab color $63.1638, 10.1830, 16.5294$ is a light color, and the websafe version is hex $CC9999$. A complement of this color would be $67.1003, -12.8745, -11.0389$, and the grayscale version is $63.8540, -3.4071, 3.4693$.

A 20% lighter version of the original color is $85.5071, 6.2823, 18.6216$, and $42.1892, 9.8639, 13.1947$ is the 20% darker color. If you saturate the color by 10%, you get $58.8962, 15.2104, 19.5221$, and if you desaturate by 10%, it is $67.6761, 5.4938, 13.1804$.

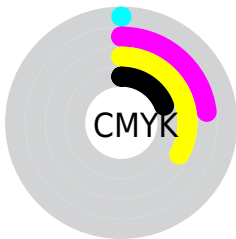
Distribution



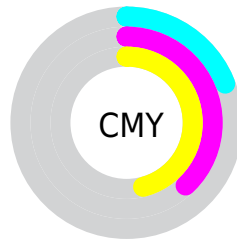
- Red (81%)
- Green (62%)
- Blue (54%)



- Red (81%)
- Yellow (66%)
- Blue (54%)



- Cyan (0%)
- Magenta (23%)
- Yellow (33%)
- Black (19%)



- Cyan (19%)
- Magenta (38%)
- Yellow (46%)

Brightness & Saturation Gradients

These gradients show how the HunterLab color 63.1638, 10.1830, 16.5294 changes by changing the brightness by 10 percent. The first figure shows a shift by +10% for each color and the second figure -10%.

Similar to the brightness gradients but the following saturation gradients show a change of the HunterLab color 63.1638, 10.1830, 16.5294 by changing the saturation by 10% instead.

63.1638, 10.1830,
16.5294

63.1638, 10.1830,
16.5294

185.9289, 9.0989,
30.1234

52.4018, 10.0047,
14.9497

86.6077, 10.3183,
19.6094

42.3303, 9.7459,
13.3256

99.2215, 10.2935,
21.1239

33.0023, 9.3920,
11.6389

112.3944, 10.2131,
22.6289

24.4825, 8.9268,
9.8598

126.1036, 10.0811,
24.1285

16.8565, 8.3277,
7.9398

140.3289, 9.9009,
25.6255

10.2445, 7.5639,
7.1712

155.0522, 9.6755,

0.0000, INF, NaN

27.1224

0.0000, NaN, NaN

170.2571, 9.4075,
28.6212

0.0000, NaN, NaN

■ 63.1638, 10.1830,
16.5294

■ 63.1638, 10.1830,
16.5294

■ 58.8962, 15.2104,
19.5221

■ 67.6761, 5.4938,
13.1804

■ 54.9015, 20.5836,
22.0821

■ 72.4007, 1.1338,
9.5333

■ 51.2179, 26.2720,
24.1259

■ 77.3149, -2.9245,
5.6380

■ 47.8858, 32.2043,
25.5642

■ 82.3985, -6.7092,
1.5338

■ 44.9468, 38.2495,
26.3189

■ 87.6342, -10.2489,
-2.7486

■ 42.4394, 44.2028,
26.3542

■ 92.7529, -14.9900,
-3.5842

■ 41.0145, 47.9532,
26.1124

■ 95.9195, -19.8361,
0.2787

Harmonies

Analogous

The Analogous color harmony consists of three colors that are next to each other on the color wheel.



63.1653, 16.8404, 9.7209



63.1638, 10.1830, 16.5294



63.1653, 0.1537, 19.6554

Triad

The Triadic color harmony groups three colors that are evenly spaced from another and form a triangle on the color wheel.



63.1653, 10.1805, 16.5303



63.1653, -22.1517, 6.6683



63.1653, 3.7548, -17.5151

Complementary

The Complementary color scheme is a pair of colors which are on the opposite of each other on the color wheel.



63.1638, 10.1830, 16.5294



67.1003, -12.8745, -11.0389

Split Complementary

Split-complementary colors differ from the complementary color scheme. The scheme consists of three colors, the original color and two neighbors of the complement color.



63.1653, -6.8254, -18.6942



63.1638, 10.1830, 16.5294



63.1653, -21.3275, -3.5644

Square

The Square scheme is like the rectangle color scheme, but the four colors are evenly spaced on the color wheel.



63.1653, 10.1805, 16.5303



63.1653, -18.2039, 14.6120



63.1653, -15.8734, -13.2414



63.1653, 12.9650, -10.2434

Rectangle

The Rectangle color scheme consists of four colors that form a rectangle on the color wheel.



63.1638, 10.1830, 16.5294



63.1653, -6.8945, 19.6470



63.1653, -15.8734, -13.2414



63.1653, 0.2259, -18.6784

Sweetspot

The Sweet Spot groups the original color and five complimentary colors.



63.1653, 10.1805, 16.5303



93.6299, -0.2548, 10.5166



59.1614, 28.3654, -9.7718



42.9118, 0.2262, 5.1853

0.0000, NaN, NaN



46.2646, -2.4686, 2.5136

Same Dimension

The Same Dimension uses a secret algorithm to generate beautiful new colors.



63.1653, 10.1805, 16.5303



76.0668, 17.3968, 23.6864



73.0267, -6.9647, 25.3546



35.1948, -0.2324, 3.8055



32.7808, 37.4160, 20.8544



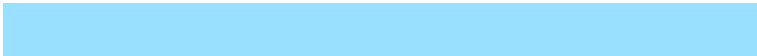
8.6056, 6.5770, 5.4179

Inverse Universe

The Inverse Universe completely reimagines the original color for something new.



67.1003, -12.8745, -11.0389



82.0224, -17.6896, -18.1552



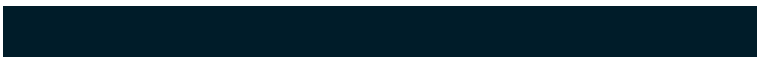
56.8334, 3.9980, -26.4927



35.7411, -3.4050, -0.0057



39.4673, -8.1691, -31.6961



10.0367, -2.9615, -6.1520

Previews

White Background



This preview shows how the HunterLab color 63.1638, 10.1830, 16.5294 looks on a white background.

Color Contrast Check

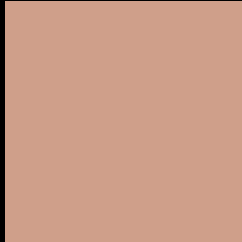
Large Text (above 18pt) WCAG AA × Fail

Any Text WCAG AA × Fail

Large Text (above 18pt) WCAG AAA × Fail

Any Text WCAG AAA × Fail

Black Background



This preview shows how the HunterLab color 63.1638, 10.1830, 16.5294 looks on a black background.

Color Contrast Check

Large Text (above 18pt) WCAG AA ✓ Pass

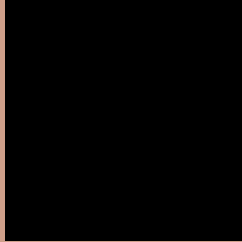
Any Text WCAG AA ✓ Pass

Large Text (above 18pt) WCAG AAA ✓ Pass

Any Text WCAG AAA ✓ Pass

If you want to check with other color combinations, try the [Color Contrast Checker](#).

HunterLab 63.1638, 10.1830, 16.5294 Background



This preview shows how black text looks on a background with the HunterLab color 63.1638, 10.1830, 16.5294.



This preview shows how white text looks on a background with the HunterLab color 63.1638, 10.1830,

Color Blindness Simulation

Color vision deficiency is a very complex topic, and I could not describe the different causes any better than Wikipedia does, so if you want to learn more, you should check out their [article about color blindness](#).

Dichromacy



Original Color

63.1638, 10.1830, 16.5294

Protanopia

63.2003, -4.0200, 14.4946

Deuteranopia

63.1434, 4.3801, 16.7627



Tritanopia

63.1936, 17.2965, 4.9416

Trichromacy



Original Color

63.1638, 10.1830, 16.5294

Protanomaly

62.9700, 1.0614, 15.0937

Deuteranomaly

63.2964, 6.3292, 16.9448

Tritanomaly

63.0338, 14.8111, 9.5160

Monochromacy



Original Color

63.1638, 10.1830, 16.5294

Achromatopsia

63.8154, -3.4050, 3.4672

Achromatomaly

63.5067, 0.8536, 8.5245

CSS Examples

Text

The CSS property to change the color of the text to HunterLab 63.1638, 10.1830, 16.5294 is called "color". The color property can be set on classes, ids or directly on the HTML element.

This example shows how text in the color `rgb(207, 159, 138)` looks like.

```
.text, #text, p{  
    color:rgb(207, 159, 138)  
}
```

If you want to add a text shadow in that color use the text-shadow property, you can generate a text shadow directly with our [CSS Text Shadow Generator](#).

Here you see how black text with a 4 pixel rgb(207, 159, 138) colored shadow looks like.

```
.shadow{ text-shadow: 4px 4px 2px rgb(207, 159, 138) }
```

Border

The CSS property to change the border of an element to HunterLab 63.1638, 10.1830, 16.5294 is called "border". The border property can be set on classes, ids or directly on the HTML element.

This example shows the color as border, it can be applied via the CSS property "border" or "border-color".

```
.border, #border, table{ border:4px solid rgb(207, 159, 138) }
```


If only the border color should be changed use the property `border-color`.

```
.border{ border-color:rgb(207, 159, 138) }
```

If you want to add a box shadow in that color use:

Here you see how a box with a 4 pixel `rgb(207, 159, 138)` colored shadow looks like.

```
.boxshadow{ -moz-box-shadow:4px 4px 4px  
4px rgb(207, 159, 138); -webkit-box-  
shadow:4px 4px 4px 4px rgb(207, 159, 138);  
box-shadow:4px 4px 4px 4px rgb(207, 159,  
138) }
```

Background

The CSS property to change the background color of an element to HunterLab 63.1638, 10.1830, 16.5294 is called "background". The background property can be set on classes, ids or directly on the HTML element.

```
.background, #background, body{  
background: rgb(207, 159, 138) }
```

If only the background color should be changed can be used:

```
.background{ background-color: rgb(207,  
159, 138) }
```

This example shows the color as background, it is applied via the CSS property "background".

To optimize and compress your CSS code, you can use our [online CSS compressor and optimizer](#) based on csstidy. If you want to create a linear or radial gradient as background or border, check our [CSS Gradient Generator](#).

Hey! You found this booklet interesting? Support Converting Colors with the new Membership Option!

The pro membership hides all ads, plus gives you double the colors in the color bucket, and more awesome pro features!

[Learn more, Memberships starting at \\$2.50/m!](#)

**Follow me
on Twitter!**

@ConvertingColor