

Converting Colors

HunterLab(63.0790, 14.8709,
8.4767)

Have a look what the booklet for
HunterLab(63.0790, 14.8709,
8.4767) contains.

HunterLab(63.0000, 14.8668, 8.2113)	3
<i>Conversions</i>	4
<i>Details</i>	6
<i>Harmonies</i>	12
<i>Previews</i>	24
<i>Color Blindness Simulation</i>	28
<i>CSS Examples</i>	31

Color

**HunterLab(63.0000, 14.8668,
8.2113)**

Conversions

Conversions Part 1

Format	Color
Hex	D09C9F
RGB	208, 156, 159
RGB Percent	82%, 61%, 62%
CMY	0.1843, 0.3882, 0.3765
CMYK	0.00, 0.25, 0.24, 0.18
HSL	357°, 36%, 71%
HSV	357°, 25%, 82%
XYZ	44.1589, 39.6900, 38.1344
YIQ	171.8900, 30.0290, 11.9570

Conversions

Conversions Part 2

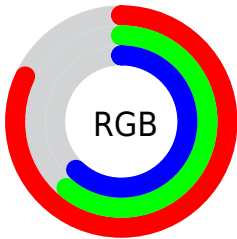
Format	Color
R _Y B	208, 156, 159
Decimal	13671583
CIE Lab	69.25, 19.80, 6.00
CIE LCh	69, 20.693, 16.866
Yxy	39.6918, 0.3620, 0.3254
Android (android.graphics.Color)	4291861663 (0xFFD09C9F)
YUV	171.8900, -6.3548, 31.6685
Hunter-Lab	63.0000, 14.8668, 8.2113

Details

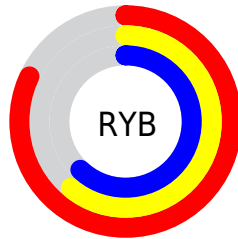
The HunterLab color **63.0000, 14.8668, 8.2113** is a light color, and the websafe version is hex **CC9999**. A complement of this color would be **75.2252, -19.4375, 0.4884**, and the grayscale version is **64.2018, -3.4256, 3.4882**.

A 20% lighter version of the original color is **85.2664, 11.2917, 8.5014**, and **42.1374, 14.3455, 6.2535** is the 20% darker color. If you saturate the color by 10%, you get **57.1585, 22.9978, 10.1274**, and if you desaturate by 10%, it is **69.2935, 7.0024, 6.5100**.

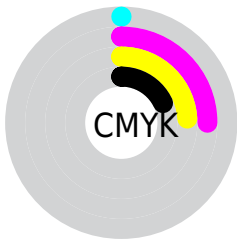
Distribution



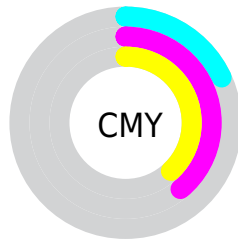
- Red (82%)
- Green (61%)
- Blue (62%)



- Red (82%)
- Yellow (61%)
- Blue (62%)



- Cyan (0%)
- Magenta (25%)
- Yellow (24%)
- Black (18%)



- Cyan (18%)
- Magenta (39%)
- Yellow (38%)

Brightness & Saturation Gradients

These gradients show how the HunterLab color 63.0000, 14.8668, 8.2113 changes by changing the brightness by 10 percent. The first figure shows a shift by +10% for each color and the second figure -10%.

Similar to the brightness gradients but the following saturation gradients show a change of the HunterLab color 63.0000, 14.8668, 8.2113 by changing the saturation by 10% instead.

63.0000, 14.8668,
8.2113

63.0000, 14.8668,
8.2113

185.6941, 15.5147,
17.1125

52.2478, 14.4570,
7.3131

86.4257, 15.4361,
10.0609

42.1870, 13.9552,
6.4280

99.0311, 15.6156,
11.0120

32.8704, 13.3455,
5.5539

112.1959, 15.7321,
11.9817

24.3631, 12.6107,
4.6849

125.8973, 15.7905,
12.9702

16.7511, 11.7290,
3.8104

140.1151, 15.7947,
13.9776

10.1553, 10.6777,
3.0499

154.8311, 15.7482,

0.0000, INF, NaN

15.0038

0.0000, NaN, NaN

170.0291, 15.6540,
16.0488

0.0000, NaN, NaN

■ 63.0000, 14.8668,
8.2113

■ 63.0000, 14.8668,
8.2113

■ 57.1585, 22.9978,
10.1274

■ 69.2935, 7.0024,
6.5100

■ 51.8530, 31.3034,
12.2551

■ 75.9635, -0.5638,
5.0026

■ 47.1902, 39.5559,
14.5602

■ 82.9548, -7.8476,
3.6666

■ 43.2868, 47.3489,
16.9482

■ 90.2228, -14.8790,
2.4777

■ 40.2532, 54.0883,
19.2493

■ 95.9948, -19.5627,
0.3757

■ 38.1622, 59.1086,
21.2349

■ 37.0040, 61.9559,
22.6871

■ 36.6558, 62.8464,
23.1255

Harmonies

Analogous

The Analogous color harmony consists of three colors that are next to each other on the color wheel.



63.0015, 15.2027, -0.6004



63.0000, 14.8668, 8.2113



63.0015, 9.4630, 14.7213

Triad

The Triadic color harmony groups three colors that are evenly spaced from another and form a triangle on the color wheel.



63.0015, 14.8644, 8.2124



63.0015, -16.0087, 14.0800



63.0015, -7.4161, -15.6978

Complementary

The Complementary color scheme is a pair of colors which are on the opposite of each other on the color wheel.



63.0000, 14.8668, 8.2113



75.2252, -19.4375, 0.4884

Split Complementary

Split-complementary colors differ from the complementary color scheme. The scheme consists of three colors, the original color and two neighbors of the complement color.



63.0015, -15.2422, -10.4385



63.0000, 14.8668, 8.2113



63.0015, -20.0038, 7.2093

Square

The Square scheme is like the rectangle color scheme, but the four colors are evenly spaced on the color wheel.



63.0015, 14.8644, 8.2124



63.0015, -8.5190, 17.7532



63.0015, -19.7317, -1.7609



63.0015, 1.9602, -15.3243

Rectangle

The Rectangle color scheme consists of four colors that form a rectangle on the color wheel.



63.0000, 14.8668, 8.2113



63.0015, 3.8880, 17.2692



63.0015, -19.7317, -1.7609



63.0015, -10.3040, -14.5008

Sweetspot

The Sweet Spot groups the original color and five complimentary colors.



63.0015, 14.8644, 8.2124



93.8610, 1.2459, 6.6758



64.2228, 21.9184, -15.1337



43.1839, 0.8428, 3.1404

0.0000, NaN, NaN



46.2646, -2.4686, 2.5136

Same Dimension

The Same Dimension uses a secret algorithm to generate beautiful new colors.



63.0015, 14.8644, 8.2124



75.3095, 24.1634, 11.5977



69.1846, 2.8754, 15.7254



34.3790, 1.2907, 2.6595



28.9466, 49.6453, 18.1355



6.8736, 11.8462, 3.8606

Inverse Universe

The Inverse Universe completely reimagines the original color for something new.



63.0015, 14.8644, 8.2124



75.3095, 24.1634, 11.5977



68.2034, -8.0116, -9.9896



34.3790, 1.2907, 2.6595



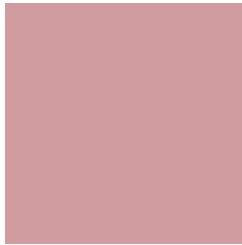
28.9466, 49.6453, 18.1355



6.8736, 11.8462, 3.8606

Previews

White Background



This preview shows how the HunterLab color 63.0000, 14.8668, 8.2113 looks on a white background.

Color Contrast Check

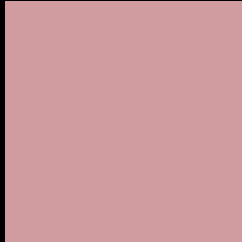
Large Text (above 18pt) WCAG AA × Fail

Any Text WCAG AA × Fail

Large Text (above 18pt) WCAG AAA × Fail

Any Text WCAG AAA × Fail

Black Background



This preview shows how the HunterLab color 63.0000, 14.8668, 8.2113 looks on a black background.

Color Contrast Check

Large Text (above 18pt) WCAG AA ✓ Pass

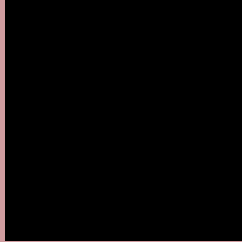
Any Text WCAG AA ✓ Pass

Large Text (above 18pt) WCAG AAA ✓ Pass

Any Text WCAG AAA ✓ Pass

If you want to check with other color combinations, try the [Color Contrast Checker](#).

HunterLab 63.0000, 14.8668, 8.2113 Background



This preview shows how black text looks on a background with the HunterLab color 63.0000, 14.8668, 8.2113.



This preview shows how white text looks on a background with the HunterLab color 63.0000, 14.8668, 8.2113.

Color Blindness Simulation

Color vision deficiency is a very complex topic, and I could not describe the different causes any better than Wikipedia does, so if you want to learn more, you should check out their [article about color blindness](#).

Dichromacy



Original Color

63.0000, 14.8668, 8.2113

Protanopia

63.2561, -2.6082, 5.1180

Deuteranopia

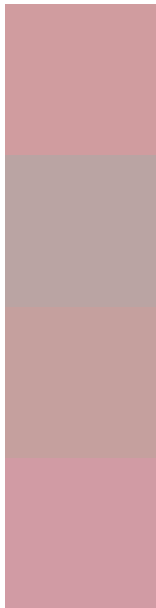
62.9366, 4.7378, 8.3907



Tritanopia

63.0777, 16.9310, 4.8007

Trichromacy



Original Color

63.0000, 14.8668, 8.2113

Protanomaly

62.9558, 3.6258, 6.2239

Deuteranomaly

62.8336, 8.6984, 8.3465

Tritanomaly

62.9907, 16.4821, 6.0446

Monochromacy



Original Color

63.0000, 14.8668, 8.2113

Achromatopsia

64.2295, -3.4271, 3.4897

Achromatomaly

63.5427, 2.9041, 5.0931

CSS Examples

Text

The CSS property to change the color of the text to HunterLab 63.0000, 14.8668, 8.2113 is called "color". The color property can be set on classes, ids or directly on the HTML element.

This example shows how text in the color `rgb(208, 156, 159)` looks like.

```
.text, #text, p{  
    color:rgb(208, 156, 159)  
}
```

If you want to add a text shadow in that color use the text-shadow property, you can generate a text shadow directly with our [CSS Text Shadow Generator](#).

Here you see how black text with a 4 pixel rgb(208, 156, 159) colored shadow looks like.

```
.shadow{ text-shadow: 4px 4px 2px rgb(208, 156, 159) }
```

Border

The CSS property to change the border of an element to HunterLab 63.0000, 14.8668, 8.2113 is called "border". The border property can be set on classes, ids or directly on the HTML element.

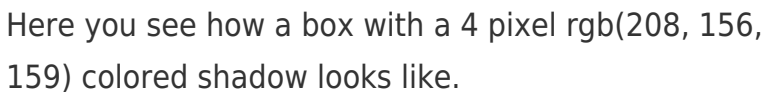
This example shows the color as border, it can be applied via the CSS property "border" or "border-color".

```
.border, #border, table{ border:4px solid rgb(208, 156, 159) }
```


If only the border color should be changed use the property `border-color`.

```
.border{ border-color:rgb(208, 156, 159) }
```

If you want to add a box shadow in that color use:



Here you see how a box with a 4 pixel `rgb(208, 156, 159)` colored shadow looks like.

```
.boxshadow{ -moz-box-shadow:4px 4px 4px  
4px rgb(208, 156, 159); -webkit-box-  
shadow:4px 4px 4px 4px rgb(208, 156, 159);  
box-shadow:4px 4px 4px 4px rgb(208, 156,  
159) }
```

Background

The CSS property to change the background color of an element to HunterLab 63.0000, 14.8668, 8.2113 is called "background". The background property can be set on classes, ids or directly on the HTML element.

```
.background, #background, body{  
background: rgb(208, 156, 159) }
```

If only the background color should be changed can be used:

```
.background{ background-color: rgb(208,  
156, 159) }
```

This example shows the color as background, it is applied via the CSS property "background".

To optimize and compress your CSS code, you can use our [online CSS compressor and optimizer](#) based on csstidy. If you want to create a linear or radial gradient as background or border, check our [CSS Gradient Generator](#).

Hey! You found this booklet interesting? Support Converting Colors with the new Membership Option!

The pro membership hides all ads, plus gives you double the colors in the color bucket, and more awesome pro features!

[Learn more, Memberships starting at \\$2.50/m!](#)

**Follow me
on Twitter!**

@ConvertingColor